

# Series 44P

## LED Pendant Mount Linear 4" X 4"

The 4" x 4" steel profile provides a bold architectural look used individually or in continuous lengths to provide comfortable, bright general lighting. Snap fit frosted lens hides the LED arrays and provides excellent glare control. Easy to join, and easy to install. Available in standard sizes, outputs and finishes with a vast array of custom options.

### CONSTRUCTION

Die-formed and welded 22-gauge cold-rolled steel. Knockouts on ends allow continuous wireway mounting. Housing is specially designed with separating compartments for direct and indirect lighting. Can be ordered to achieve both direct and indirect lighting, or one or the other.

### DIFFUSERS

Snap in fit frosted acrylic lens.

### TYPICAL OPTIONS & ACCESSORIES

Cord sets, whips, occupancy sensors, hanging kits, wire guards. Emergency battery backup option available. Contact factory for more details.



### DIMENSIONS

2ft. - 24"L x 4"W x 4"H

4ft. - 48"L x 4"W x 4"H

6ft. - 72"L x 4"W x 4"H

8ft. - 96"L x 4"W x 4"H

### FEATURES & BENEFITS

- Pendant mount kits available
- For individual use or lined up in a continuous row, resulting in a clean line of light
- Recommended for commercial & residential applications
- Custom finishes available; contact factory
- CRI: >80 standard, 90 optional
- L70: >50,000 Hours
- Dimming: 0-10V 120-277V standard, 120V ELV/TRIAC optional
- Several Kelvin temperature options (3000K, 3500K, 4000K, 5000K)
- Emergency backup options available
- Power Factor: >0.90
- Suitable for damp and dry locations
- 5-Year Warranty



### ORDERING GUIDE

#### Up or Down Light Only

SERIES	MOUNTING		DIFFUSER		LENGTH		GEAR	DISTRIBUTIONS		WATTAGE <sup>1</sup>				
44	P	Pendant	SF	Snap-in frosted acrylic lens (85% transmission) Special for LEDs; only available for uplight and downlight	24L	24"	K	BLANK U	Downlight Only  Uplight Only	8W	8	Watts,	1000	Lumens
										12W	12	Watts,	1400	Lumens
					18W	18				Watts,	2200	Lumens		
					24W	24				Watts,	2900	Lumens		
			AF	Asymmetric snap-in frosted acrylic lens	48L	48"				16W	16	Watts,	1900	Lumens
										24W	24	Watts,	2900	Lumens
										36W	36	Watts,	4300	Lumens
										48W	48	Watts,	5800	Lumens
					72L	72"				24W	24	Watts,	2900	Lumens
										36W	36	Watts,	4300	Lumens
										54W	54	Watts,	6500	Lumens
										72W	72	Watts,	8600	Lumens
					96L	96"				32W	32	Watts,	3800	Lumens
										48W	48	Watts,	5800	Lumens
										72W	72	Watts,	8600	Lumens
										96W	96	Watts,	111500	Lumens

DRIVER	UP/DOWN CONTROL	CRI/CCT <sup>3</sup>	FINISH <sup>2</sup>	CONFIGURATION	EMERGENCY
DMV 120-277VAC 0-10V Dimming	Blank Paired Up/Down Dimming+control	30K 3000K 80 CRI	WH White	Blank Individual	EM14 14W Emergency battery backup (integrated in fixtures 4' and longer)
G120 ELV/TRIAC Dimming at 120V only	(11) Separate Up/Down Dimming+control	35K 3500K 80 CRI	BK Black	-B Beginner Run	
D1MV 120-277VAC 0-10V Dimming (dim to 1%)		40K 4000K 80 CRI	SL Silver	-E Ender Run	
SRMV 120-277VAC Phillips Sensor-Ready		50K 5000K 80 CRI	** Custom Color	-J Joiner	
DALMV 120-277VAC DALI Dimming		930K 3000K 90 CRI			
		935K 3500K 90 CRI			
		940K 4000K 90 CRI			

HANGING KIT	SENSOR
HC301WH Cable kit with 4' cable & 3 wires power feed/cable incl. and white canopy	SS On/Off Sensor
HC302WH Cable kit with 12' cable & 3 wires power feed/cable incl. and white canopy	SV Bi-Level Sensor
HC3015WWH Cable kit with 4' cable & 5 wires power feed/cable incl. and white canopy	SD Daylight Harvesting Sensor
HC3025WWH Cable kit with 12' cable & 5 wires power feed/cable incl. and white canopy	
HC3016WH Cable kit with 4' cable & 6 wires power feed/cable incl and white canopy	
HC3026WH Cable kit with 12' cable & 6 wires power feed/cable incl and white canopy	
2SCS24WH Two stem kits with 24" stem, canopy and mounting hardware for a 4' fixture	SM Microwave Sensor

#### Note:

<sup>1</sup> Programmable LED drivers allow custom configured wattages and corresponding lumens.

<sup>2</sup> \*\*RAL custom finishes available. Consult factory for more information or pricing requests.

<sup>3</sup> Consult factory for 90 CRI 5000K availability.

**NOTE:** Values shown are typical or recorded under standardized conditions at 25°C. Actual performance may vary based environment or application. Specifications are subject to change without notice. We reserve the right to change design, materials, LED's and finish in any way that will not alter installed appearance or reduce function and performance.

### ORDERING GUIDE

#### Up and Down Light

SERIES	MOUNTING		DIFFUSER		LENGTH		GEAR	UP and DOWN LIGHT CONFIGURATIONS¹			
44	P	Pendant	SF	Snap-in frosted acrylic lens (85% transmission) Special for LEDs; only available for uplight and downlight	24L	24"	K	U6W	6 Watts, 700 Lumens	D12W	12 Watts, 1400 Lumens
								U9W	9 Watts, 1100 Lumens	D18W	18 Watts, 2200 Lumens
								U12W	12 Watts, 1400 Lumens	D24W	24 Watts, 2900 Lumens
			AF	Asymmetric snap-in frosted acrylic lens	48L	48"		U8W	8 Watts, 1000 Lumens	D16W	16 Watts, 1900 Lumens
								U12W	12 Watts, 1400 Lumens	D24W	24 Watts, 2900 Lumens
								U18W	18 Watts, 2200 Lumens	D36W	36 Watts, 4300 Lumens
								U24W	24 Watts, 2900 Lumens	D48W	48 Watts, 5800 Lumens
			72L	72"		U12W	12 Watts, 1400 Lumens	D24W	24 Watts, 2900 Lumens		
						U18W	18 Watts, 2200 Lumens	D36W	36 Watts, 4300 Lumens		
						U27W	27 Watts, 3200 Lumens	D54W	54 Watts, 6500 Lumens		
						U36W	36 Watts, 3800 Lumens	D72W	72 Watts, 8600 Lumens		
			96L	96"		U16W	16 Watts, 1900 Lumens	D32W	32 Watts, 3800 Lumens		
						U24W	24 Watts, 2900 Lumens	D48W	48 Watts, 5800 Lumens		
						U36W	36 Watts, 3800 Lumens	D72W	72 Watts, 8600 Lumens		
						U48W	48 Watts, 5800 Lumens	D96W	96 Watts, 11500 Lumens		

DRIVER		UP/DOWN CONTROL		CRI/CCT <sup>3</sup>		FINISH <sup>2</sup>		CONFIGURATION		EMERGENCY	
DMV	120-277VAC 0-10V Dimming	Blank	Paired Up/Down Dimming+control	30K	3000K 80 CRI	WH	White	Blank	Individual	EM14	14W Emergency battery backup (integrated in fixtures 4' and longer)
G120	ELV/TRIAC Dimming at 120V only	(11)	Separate Up/Down Dimming+control	35K	3500K 80 CRI	BK	Black	-B	Beginner Run		
D1MV	120-277VAC 0-10V Dimming (dim to 1%)			40K	4000K 80 CRI	SL	Silver	-E	Ender Run		
SRMV	120-277VAC Phillips Sensor-Ready			50K	5000K 80 CRI	**	Custom Color	-J	Joiner		
DALMV	120-277VAC DALI Dimming			930K	3000K 90 CRI						
				935K	3500K 90 CRI						
				940K	4000K 90 CRI						

HANGING KIT		SENSOR	
HC301WH	Cable kit with 4' cable & 3 wires power feed/cable incl. and white canopy	SS	On/Off Sensor
HC302WH	Cable kit with 12' cable & 3 wires power feed/cable incl. and white canopy	SV	Bi-Level Sensor
HC3015WWH	Cable kit with 4' cable & 5 wires power feed/cable incl. and white canopy	SD	Daylight Harvesting Sensor
HC3025WWH	Cable kit with 12' cable & 5 wires power feed/cable incl. and white canopy		
HC3016WH	Cable kit with 4' cable & 6 wires power feed/cable incl and white canopy	SM	Microwave Sensor
HC3026WH	Cable kit with 12' cable & 6 wires power feed/cable incl and white canopy		
2SCS24WH	Two stem kits with 24" stem, canopy and mounting hardware for a 4' fixture		

#### Note:

<sup>1</sup> Programmable LED drivers allow custom configured wattages and corresponding lumens.

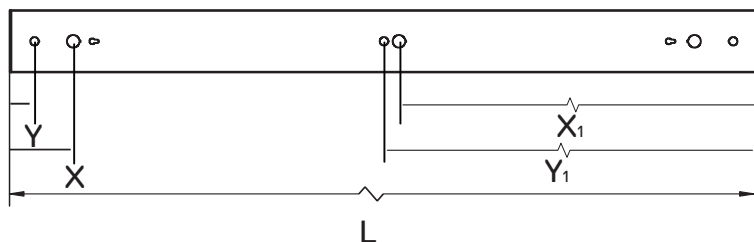
<sup>2</sup> \*\*RAL custom finishes available. Consult factory for more information or pricing requests.

<sup>3</sup> Consult factory for 90 CRI 5000K availability.

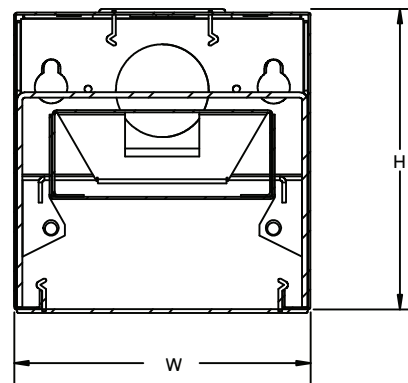
**NOTE:** Values shown are typical or recorded under standardized conditions at 25°C. Actual performance may vary based environment or application. Specifications are subject to change without notice. We reserve the right to change design, materials, LED's and finish in any way that will not alter installed appearance or reduce function and performance.

### PENDANT MOUNT DRAWINGS AND DIMENSIONS

Top Side View



End Side View



PART	L	W	H	X	Y	X <sub>1</sub>	Y <sub>1</sub>
44P12L	12.00"	4.00"	4.05"	*	*	*	*
44P24L	24.00"	4.00"	4.05"	*	*	*	*
44P36L	36.00"	4.00"	4.05"	*	*	*	*
44P48L	48.00"	4.00"	4.05"	4.00"	1.50"	23.00"	24.00"
44P60L	60.00"	4.00"	4.05"	*	*	*	*
44P72L	72.00"	4.00"	4.05"	*	*	*	*
44P84L	84.00"	4.00"	4.05"	*	*	*	*
44P96L	96.00"	4.00"	4.05"	4.79"	6.00"	48.97"	48.00"

L-Length

W-Width

H-Height

X-0.875" Knock Out Distance

Y-0.575" Hanging Kit Distance

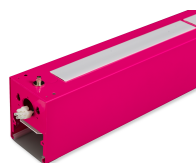
\* - Please consult factory

### REPLACEMENT LENS ORDERING INFORMATION

SERIES	DESCRIPTION
044PSF24L	Replacement Snap-in Frosted lens for 24"
044PSF48L	Replacement Snap-in Frosted lens for 48"
044PSF72L	Replacement Snap-in Frosted lens for 72"
044PSF96L	Replacement Snap-in Frosted lens for 96"



Uplight & Downlight



Continuous Run End



Wall/Pendant Mount

We reserve the right to change design, materials, LED's and finish in any way that will not alter installed appearance or reduce function and performance.