



Texas Fluorescents
Reinvented

CATALOG#: _____
PROJECT: _____
TYPE: _____

Series 66P

LED Pendant Mount Linear 6" X 6"

This spec-grade 6" X 6" fixture is ideal for general or perimeter lighting applications where a bolder size is required and can be installed individually or in group patterns. Specially designed for dedicated direct light, indirect light or both (indirect allows a snap-in lens to hide the lamps or LED arrays). Ideal for corridors, lobbies, and office areas, etc.

CONSTRUCTION

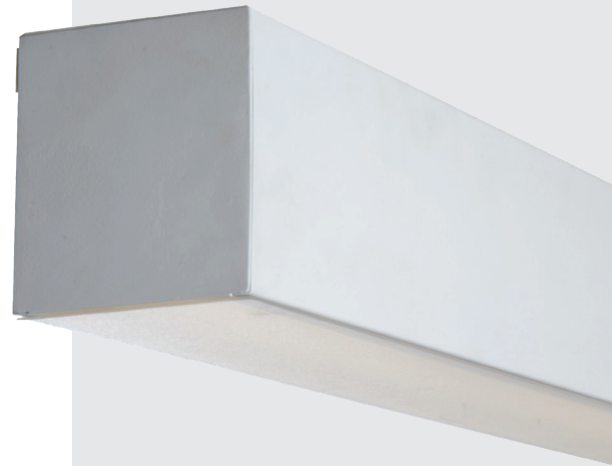
Die-formed and welded 22-gauge cold-rolled steel. Knockouts on ends allow continuous wireway mounting. Housing is specially designed for direct and/or indirect lighting with separating compartments for each.

DIFFUSERS

Fixture accepts various lenses or louvers.

TYPICAL OPTIONS & ACCESSORIES

Cord sets, whips, occupancy sensors, hanging kits, wire guards. Emergency battery backup options available. Contact factory for more details.



DIMENSIONS

4ft. - 48"L x 6"W x 6"H

8ft. - 96"L x 6"W x 6"H

Custom lengths available; contact factory

FEATURES & BENEFITS

- Pendant mounted; can also be surface, recess or wall mounted
- For individual use or lined up in a continuous row, resulting in a clean line of light
- Recommended for commercial & residential applications
- Custom finishes available; contact factory
- CRI: >80 standard, 90 optional
- L70: >50,000 Hours
- Dimming: 0-10V 120-277V standard, 120V ELV/TRIAC optional
- Several Kelvin temperature options (3000K, 3500K, 4000K, 5000K)
- Emergency backup options available
- Power Factor: >0.90
- Suitable for damp and dry locations
- 5-Year Warranty



ORDERING GUIDE

Up or Down Light Only

SERIES	MOUNTING	DIFFUSER	LENGTH	GEAR	DISTRIBUTIONS	WATTAGE ¹	
66	P Pendant	SF Snap-in frosted acrylic lens (85% transmission) Special for LEDs; only available for upright and downlight	24L 24"	K	BLANK Downlight Only	8W 8 Watts, 1000 Lumens	
					U Uplight Only	12W 12 Watts, 1400 Lumens	
	S Surface downlight only		48L 48"	18W 18 Watts, 2200 Lumens			
				24W 24 Watts, 2900 Lumens			
			72L 72"	16W 16 Watts, 1900 Lumens			
				24W 24 Watts, 2900 Lumens			
				36W 36 Watts, 4300 Lumens			
				48W 48 Watts, 5800 Lumens			
	96L 96"		24W 24 Watts, 2900 Lumens				
			36W 36 Watts, 4300 Lumens				
			54W 54 Watts, 6500 Lumens				
			72W 72 Watts, 8600 Lumens				
						96W 96 Watts, 111500 Lumens	

DRIVER	UP/DOWN CONTROL	FINISH ²	CRI/CCT ³	CONFIGURATION
DMV 120-277VAC 0-10V Dimming	Blank Paired Up/Down Dimming+control	WH White	30K 3000K	Blank Individual
		BK Black	80 CRI	-B Beginner Run
G120 ELV/TRIAC Dimming at 120V only	11 Separate Up/Down Dimming+control	SI Silver	35K 3500K	-E Ender Run
		** Custom Color	80 CRI	-J Joiner
D1MV 120-277VAC 0-10V Dimming (dim to 1%)			40K 4000K	
			80 CRI	
SRMV 120-277VAC Phillips Sensor-Ready			50K 5000K	
			80 CRI	
DALMV 120-277VAC DALI Dimming			930K 3000K	
			90 CRI	
			935K 3500K	
			90 CRI	
			940K 4000K	
			90 CRI	

HANGING KIT	SENSOR
HC301WH Cable kit with 4' cable & 3 wires power feed/cable incl. and white canopy	SS On/Off Sensor
HC302WH Cable kit with 12' cable & 3 wires power feed/cable incl. and white canopy	SV Bi-Level Sensor
HC3015WWH Cable kit with 4' cable & 5 wires power feed/cable incl. and white canopy	SD Daylight Harvesting Sensor
HC3025WWH Cable kit with 12' cable & 5 wires power feed/cable incl. and white canopy	
HC3016WH Cable kit with 4' cable & 6 wires power feed/cable incl. and white canopy	SM Microwave Sensor
HC3026WH Cable kit with 12' cable & 6 wires power feed/cable incl. and white canopy	
2SCS24WH Two stem kits with 24" stem, canopy and mounting hardware for a 4' fixture	

- Note:
1. Uplight and downlight not available in combination for 2 ft fixtures. Consult factory for more information.
 2. **RAL custom finishes available. Consult factory for more information or pricing requests.
 3. Consult factory for 90 CRI 5000K availability.

*Programmable LED drivers allow custom configured wattages and corresponding lumens.

We reserve the right to change design, materials, LED's and finish in any way that will not alter installed appearance or reduce function and performance.

ORDERING GUIDE Up and Down Light

SERIES	MOUNTING	DIFFUSER	LENGTH	GEAR	UP and DOWN LIGHT CONFIGURATIONS ¹			
66	P Pendant	SF Snap-in frosted acrylic lens (85% transmission) Special for LEDs; only available for upright and downlight	24L 24"	K	U6W	6 Watts, 700 Lumens	D12W	12 Watts, 1400 Lumens
					U9W	9 Watts, 1100 Lumens	D18W	18 Watts, 2200 Lumens
	S Surface downlight only		48L 48"	U12W	12 Watts, 1400 Lumens	D24W	24 Watts, 2900 Lumens	
				U8W	8 Watts, 1000 Lumens	D16W	16 Watts, 1900 Lumens	
				U12W	12 Watts, 1400 Lumens	D24W	24 Watts, 2900 Lumens	
				U18W	18 Watts, 2200 Lumens	D36W	36 Watts, 4300 Lumens	
	72L 72"		U24W	24 Watts, 2900 Lumens	D48W	48 Watts, 5800 Lumens		
			U12W	12 Watts, 1400 Lumens	D24W	24 Watts, 2900 Lumens		
			U18W	18 Watts, 2200 Lumens	D36W	36 Watts, 4300 Lumens		
			U27W	27 Watts, 3200 Lumens	D54W	54 Watts, 6500 Lumens		
	96L 96"		U36W	36 Watts, 3800 Lumens	D72W	72 Watts, 8600 Lumens		
			U16W	16 Watts, 1900 Lumens	D32W	32 Watts, 3800 Lumens		
			U24W	24 Watts, 2900 Lumens	D48W	48 Watts, 5800 Lumens		
			U36W	36 Watts, 3800 Lumens	D72W	72 Watts, 8600 Lumens		
				U48W	48 Watts, 5800 Lumens	D96W	96 Watts, 11500 Lumens	

DRIVER	UP/DOWN CONTROL	FINISH ²	CRI/CCT ³	CONFIGURATION	EMERGENCY
DMV 120-277VAC 0-10V Dimming	Blank Paired Up/Down Dimming+control	WH White BK Black	30K 3000K 80 CRI	Blank Individual -B Beginner Run	EM14 14W Emergency battery backup (integrated in fixtures 4' and longer)
G120 ELV/TRIAC Dimming at 120V only	11 Separate Up/Down Dimming+control	SL Silver ** Custom Color	35K 3500K 80 CRI	-E Ender Run -J Joiner	
D1MV 120-277VAC 0-10V Dimming (dim to 1%)		40K 4000K 80 CRI			
SRMV 120-277VAC Phillips Sensor-Ready		50K 5000K 80 CRI			
DALMV 120-277VAC DALI Dimming		930K 3000K 90 CRI			
		935K 3500K 90 CRI			
		940K 4000K 90 CRI			

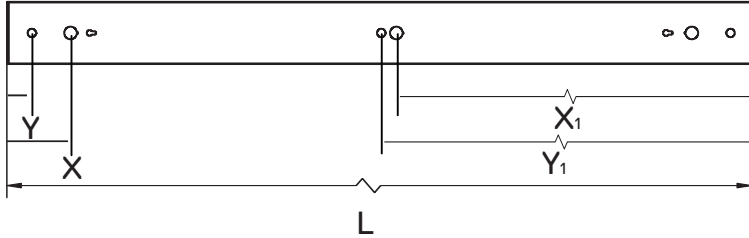
HANGING KIT		SENSOR	
HC301WH	Cable kit with 4' cable & 3 wires power feed/cable incl. and white canopy	SS	On/Off Sensor
HC302WH	Cable kit with 12' cable & 3 wires power feed/cable incl. and white canopy	SV	Bi-Level Sensor
HC3015WWH	Cable kit with 4' cable & 5 wires power feed/cable incl. and white canopy	SD	Daylight Harvesting Sensor
HC3025WWH	Cable kit with 12' cable & 5 wires power feed/cable incl. and white canopy		
HC3016WH	Cable kit with 4' cable & 6 wires power feed/cable incl and white canopy	SM	Microwave Sensor
HC3026WH	Cable kit with 12' cable & 6 wires power feed/cable incl and white canopy		
2SCS24WH	Two stem kits with 24" stem, canopy and mounting hardware for a 4' fixture		

- Note:
- Uplight and downlight not available in combination for 2 ft fixtures. Consult factory for more information.
 - **RAL custom finishes available. Consult factory for more information or pricing requests.
 - Consult factory for 90 CRI 5000K availability.

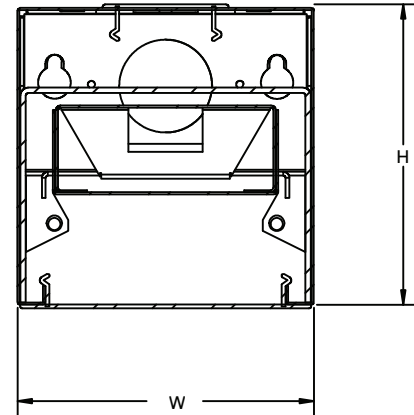
*Programmable LED drivers allow custom configured wattages and corresponding lumens.

We reserve the right to change design, materials, LED's and finish in any way that will not alter installed appearance or reduce function and performance.

DRAWINGS & IMAGES PENDANT MOUNT



End Side View



PART	L	W	H	X	Y	X ₁	Y ₁
66P12L	12.00"	6.00"	6.05"	*	*	*	*
66P24L	24.00"	6.00"	6.05"	*	*	*	*
66P36L	36.00"	6.00"	6.05"	*	*	*	*
66P48L	48.00"	6.00"	6.05"	4.00"	1.50"	23.00"	24.00"
66P60L	60.00"	6.00"	6.05"	*	*	*	*
66P72L	72.00"	6.00"	6.05"	*	*	*	*
66P84L	84.00"	6.00"	6.05"	*	*	*	*
66P96L	96.00"	6.00"	6.05"	4.79"	6.00"	48.97"	48.00"

L-Length

W-Width

H-Height

X-0.875" Knock Out Distance

Y-0.575" Hanging Kit Distance

* - Please consult factory

REPLACEMENT LENS ORDERING INFORMATION

SERIES	DESCRIPTION
066PSF24L	Replacement Snap-in Frosted lens for 24"
066PSF48L	Replacement Snap-in Frosted lens for 48"
066PSF96L	Replacement Snap-in Frosted lens for 96"



Uplight & Downlight



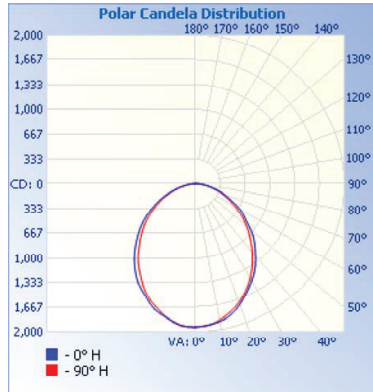
Continuous Run End



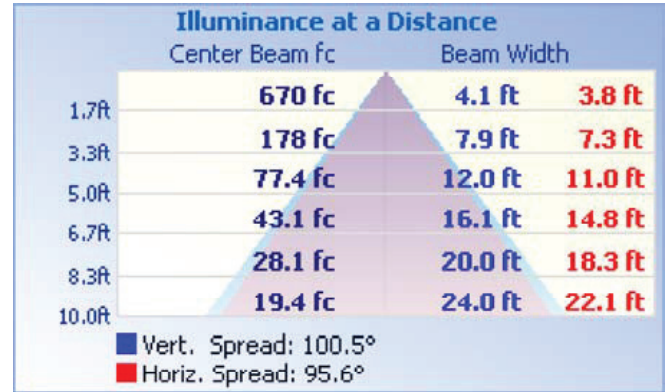
Wall/Pendant Mount

PHOTOMETRICS

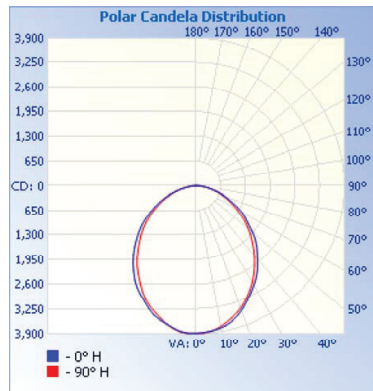
48L-66PSF48LR48W4800LDMV40K



Zonal Lumen Summary		
Zone	Lumens	% Luminaire
0-30	1,436.8	30.5%
0-40	2,288.0	48.6%
0-60	3,828.5	81.4%
60-90	872.7	18.6%
70-100	362.4	7.7%
90-120	2.8	0.1%
0-90	4,701.3	99.9%
90-180	2.8	0.1%
0-180	4,704.0	100%



96L-66PSF96LR96W9600LDMV40K



Zonal Lumen Summary		
Zone	Lumens	% Luminaire
0-30	2,886.3	30.5%
0-40	4,596.4	48.6%
0-60	7,691.2	81.4%
60-90	1,753.2	18.6%
70-100	727.9	7.7%
90-120	5.6	0.1%
0-90	9,444.4	99.9%
90-180	5.6	0.1%
0-180	9,450.0	100%

