



Texas Fluorescents
Reinvented

CATALOG#: _____
PROJECT: _____
TYPE: _____

Series SKD

Low Profile LED Strip

Full body micro silhouette makes a bold statement with a minimal design in brushed nickel powder coated finish (consult factory for other finishes). Scaled to the LED module the matte white diffuser surrounds the LEDs for soft lighting. Brushed nickel fixture can be surface mounted on wall or ceiling or pendant mounted with specially engineering cable mounting kit.

CONSTRUCTION

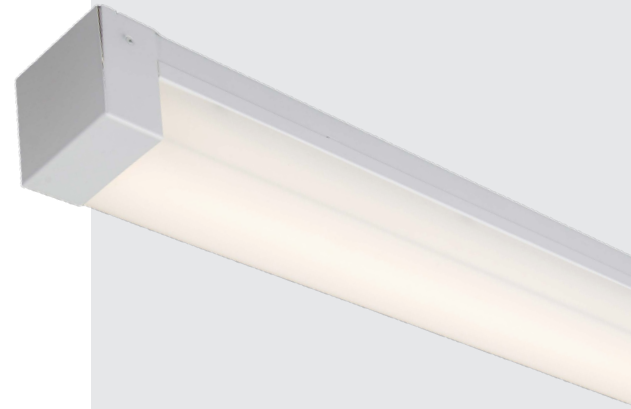
Housing is die-formed and embossed code 22 gauge steel. Finish is high reflectance baked white enamel. Wiring knockouts are provided on back and end of housing. No knock-outs on sides or ends

MOUNTING

Surface mount, pendant mount, horizontal or vertical.

TYPICAL OPTIONS & ACCESSORIES

Whips, wire guards, external emergency battery backup (IOTA ILB-CP10). Contact factory for more details.



DIMENSIONS

2"W Housing

24"L x 2"W x 2.65"H

46"L x 2"W x 2.65"H

92"L x 2"W x 2.65"H

3" Wide Housing (WB)

24"L x 3"W x 2.65"H

46"L x 3"W x 2.65"H

92"L x 3"W x 2.65"H

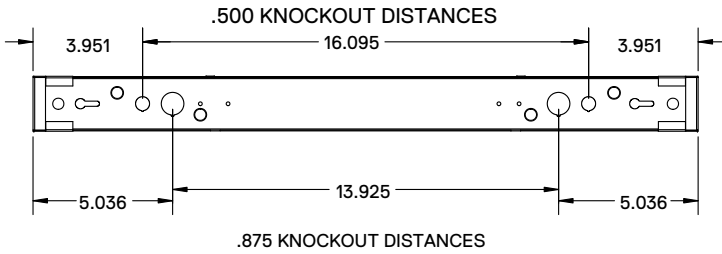
FEATURES & BENEFITS

- Clean body - No knock-outs on sides or ends.
- Knock-outs on back accept standard electrical fittings.
- Available with smooth frosted lens.
- Consult for custom finish options
- Suitable for dry and damp locations
- 50,000 hrs of L70 LED life
- CRI >80
- 0-10 Volts dimmable 120-277V
- Power factor 0.99
- 5 year warranty

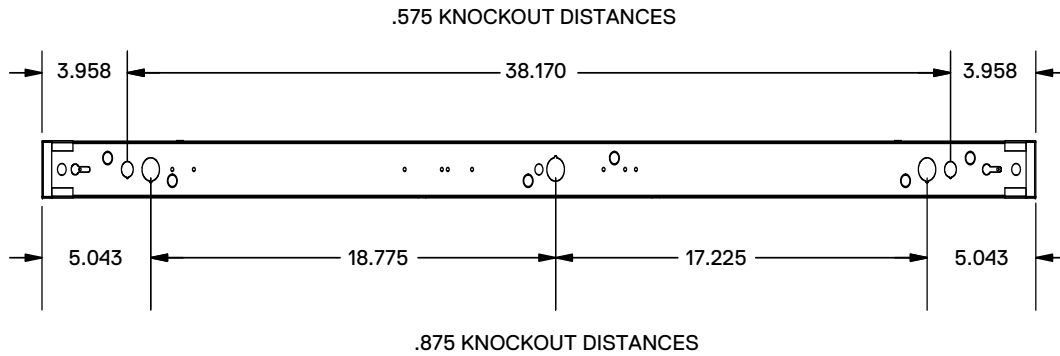


DRAWINGS & IMAGES

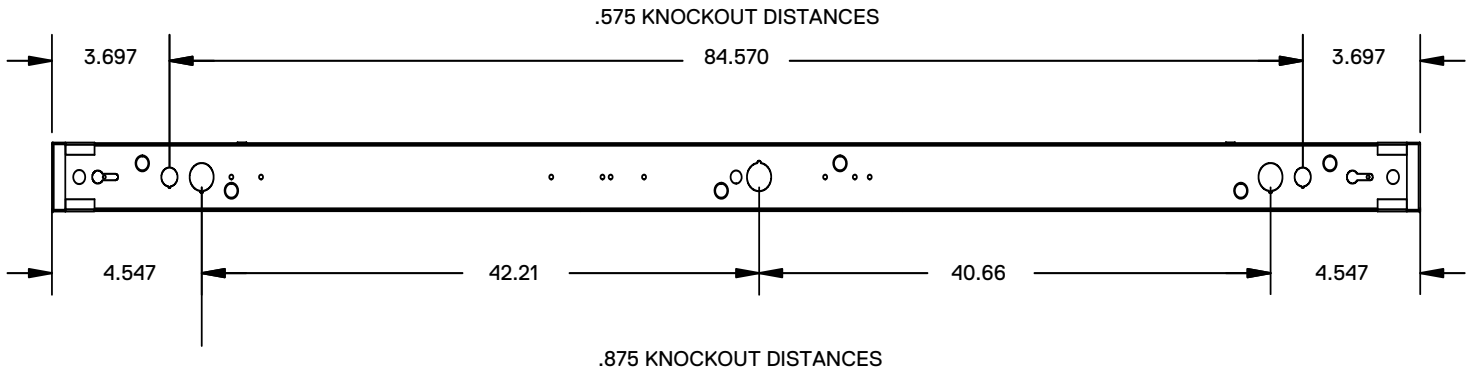
24L



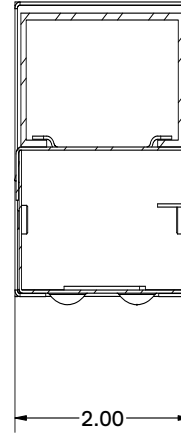
46L



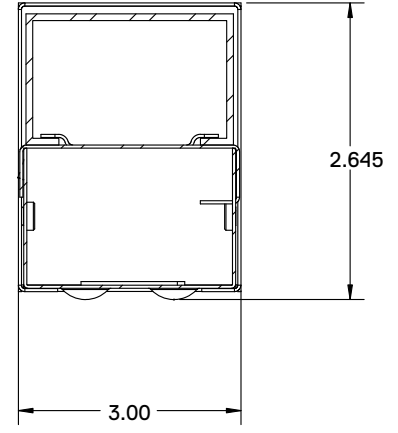
92L



End View



2" Wide Body



3" Wide Body

ORDERING GUIDE

SENSOR	SERIES	LENS MATERIAL	LENGTH	WATTAGE & LUMENS		DRIVER	CCT		FINISH	
SD** Daylight Harvesting SM** Microwave Sensor SS** On/Off Sensor SV** Bi Level (xx) Sensor	SKD 2" Wide Housing	FR Frosted	24L 24"	Y12W 12 Watts 1200 Lumens	DMV 0-10V dimming DMV(xx) 0-10V Dimming (XX for the percentage of light output when it is not occupied)	30K 3000K 35K 3500K 40K 4000K 50K 5000K	WH Matte White BK Black SL Silver			
				Y18W 18 Watts 1800 Lumens						
			46L 46"	Y28W 28 Watts 2800 Lumens						
				Y35W 35 Watts 3400 Lumens						
			92L 92"	Y57W 57 Watts 5400 Lumens						
				Y72W 72 Watts 7000 Lumens						

OPTIONS	
WP	6ft. 3 wire 18 gauge whip
WP10	6ft. 4 wire 18 gauge whip
EM	10W Emergency battery backup
PI1	3 wire harness
PI3	5 wire harness

*Programmable LED drivers allow custom configured wattages and corresponding lumens.

** Sensor options do not apply in 2' housing

NOTE: Values shown are typical or recorded under standardized conditions at 25°C. Actual performance may vary based environment or application. Specifications are subject to change without notice. We reserve the right to change design, materials, LED's and finish in any way that will not alter installed appearance or reduce function and performance.

ORDERING GUIDE

SENSOR	SERIES	LENS MATERIAL	LENGTH	WATTAGE & LUMENS		DRIVER		CCT		FINISH	
SD** Daylight Harvesting SM** Microwave Sensor SS** On/Off Sensor SV** Bi Level (xx) Sensor	SKDWB 3" Wide Housing	FR Frosted	24L 24"	Z35W	35 Watts 3400 Lumens	DMV 0-10V dimming DMV(xx) 0-10V Dimming (XX for the percentage of light output when it is not occupied)	30K 3000K 35K 3500K 40K 4000K 50K 5000K	WH Matte White BK Black SL Silver			
			48L 48"	Z40W	40 Watts 4000 Lumens						
			96L 96"	Z80W	80 Watts 8000 Lumens						
				Z114W	114 Watts 10800 Lumens						
					* * *						

OPTIONS	
WP	6ft. 3 wire 18 gauge whip
WP10	6ft. 4 wire 18 gauge whip
EM	10W Emergency battery backup
PI1	3 wire harness
PI3	5 wire harness

*Programmable LED drivers allow custom configured wattages and corresponding lumens.

** Sensor options do not apply in 2' housing

NOTE: Values shown are typical or recorded under standardized conditions at 25°C. Actual performance may vary based environment or application. Specifications are subject to change without notice. We reserve the right to change design, materials, LED's and finish in any way that will not alter installed appearance or reduce function and performance.