

Series FHB

LED Linear Pendant High Bay with Baffle

The FHB series is a pendant, chain or surface mounted high bay designed with baffles to cut glare. It is perfect for retail applications to enhance aesthetic appeal.

CONSTRUCTION

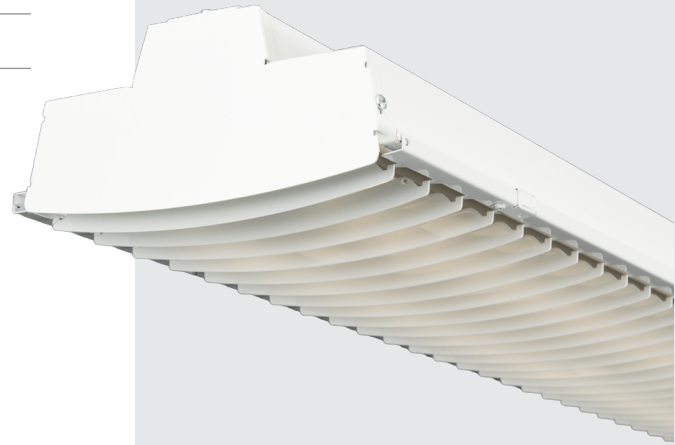
Premium full specular white reflectors are standard for high-efficiency lighting; white reflectors may be specified for wider distributions. Housing is die-formed and embossed code 22-gauge steel. Standard finish is high-reflectance, baked white enamel. Wiring knockouts are provided on back and end of housing. Baffle is hinged and latched, and may be hinged from either side.

MOUNTING

Mounting options include direct surface, chain, or pendant wire. Not suitable for stem mount.

TYPICAL OPTIONS & ACCESSORIES

Cord sets, whips, occupancy sensors, hanging kits, etc. White, black or silver standard finishes. Emergency battery backup option available. Contact factory for more details.



DIMENSIONS

48L - 48"L x 10.87"W x 4.75"H

96L - 96"L x 10.87"W x 4.75"H

FEATURES & BENEFITS

- Pendant mount, chain mount or surface mount
- Baffled design for glare reduction
- Recommended for retail applications to enhance aesthetics
- Multiple lumen packages / wattages through use of programmable drivers
- Several Kelvin temperatures available (3000K, 3500K, 4000K, 5000K); consult factory for RGBW option
- Standard finishes include white, black and silver
- Suitable for dry or damp location
- >50,000 hrs of L70 LED life
- CRI >80
- Emergency battery backup available
- 0-10 Volt dimmable 120-277V (120 ELV/TRIAC avail)
- 5 year warranty





CATALOG#: _____
 PROJECT: _____
 TYPE: _____

Series FHB

LED Linear Pendant High Bay
 with Baffle

ORDER INFORMATION

Factory at your fingertips. Fill in the blanks to create your part number or create a custom configuration.

SERIES	LENS MATERIAL		LENGTH		WATTAGE & LUMENS ¹		REFLECTOR		DRIVER		CCT/CRI ²	
FHB Wide Body Strip	L	Baffle Included	48L	48"	Y32W	32 Watts 4050 Lumens	W30	White Steel Reflector	DMV	0-10V Dimming	30K	3000K 80 CRI
	X	No Baffle			Y48W	48 Watts 5400 Lumens			G120	ELV/TRIAC dimming at 120V only	35K	3500K 80 CRI
	FR	Frosted Lens	Y57W	57 Watts 6000 Lumens	D1MV	0-10V Dimming (dim to 1%)			40K	4000K 80 CRI		
			Y72W	72 Watts 7600 Lumens					50K	5000K 80 CRI		
			96L	96"					Y97W	97 Watts 10800 Lumens	930K	3000K 90 CRI
									Y114W	114 Watts 12000 Lumens	935K	3500K 90 CRI
				940K	4000K 90 CRI							

Additional Options

FINISH		OPTIONS	
WH	White	C8515P	5-15P 120V 8ft. Cord & Plug
BK	Black	C8L715P	L7-15P 277V 8ft. Cord & Plug
SL	Silver	C8	8ft. Cord, No Plug
		WP	6ft. 3 wire, Whip
		WP4W	6ft. 4 wire, Whip
		EM14	14W Emergency Battery Backup for 90 mins

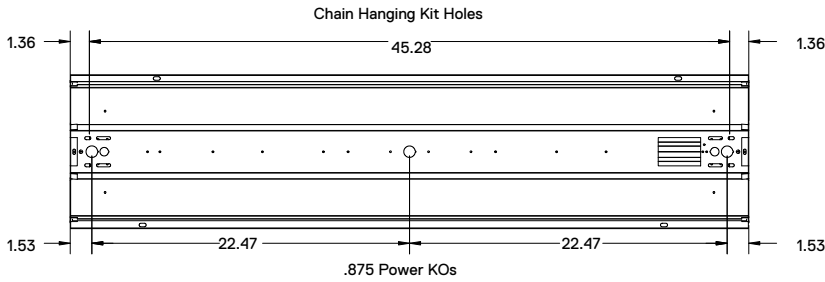
¹Programmable LED drivers allow custom configured wattages and corresponding lumens.

²Consult factory for 90CRI 5000K availability.

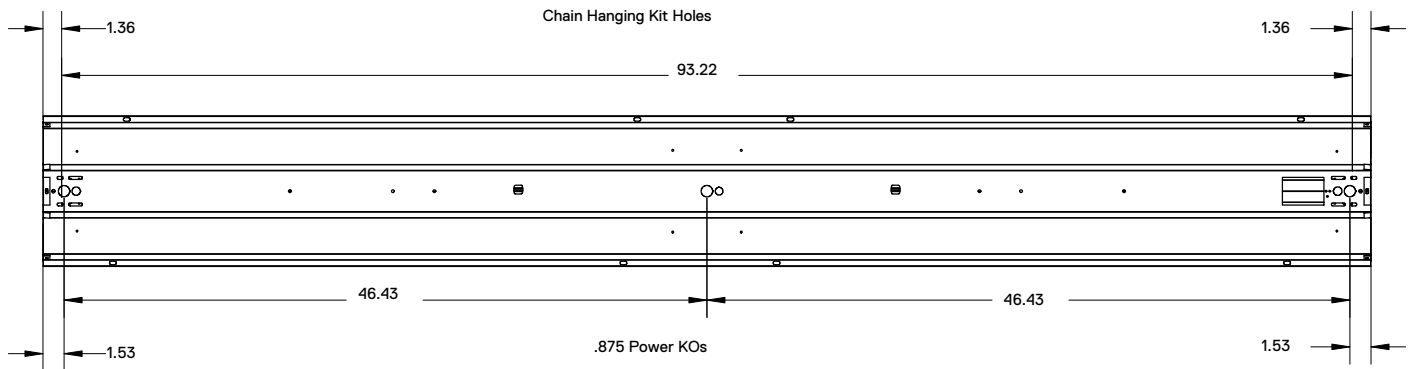
NOTE: Values shown are typical or recorded under standardized conditions at 25°C. Actual performance may vary based environment or application. Specifications are subject to change without notice. We reserve the right to change design, materials, LED's and finish in any way that will not alter installed appearance or reduce function and performance.

DIMENSIONS - Down light only

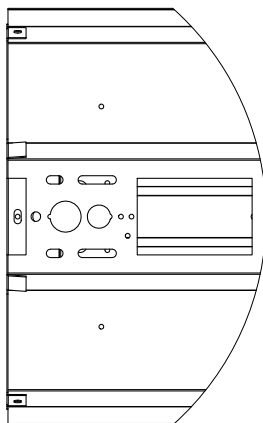
4ft



8ft

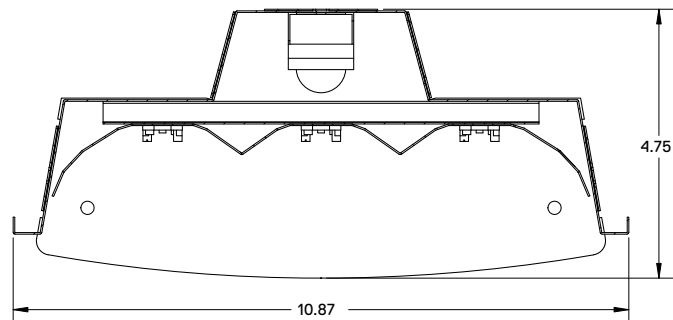


DETAILS VIEW



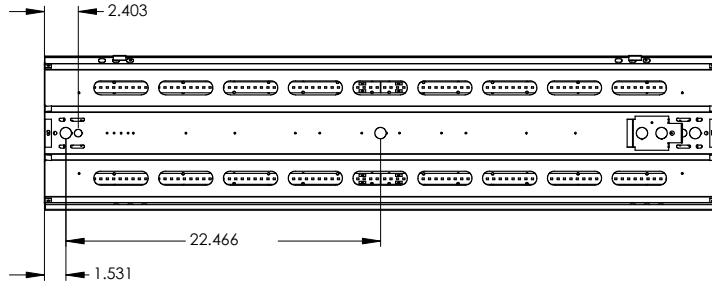
DETAIL A
 SCALE 1:3

SECTION VIEW

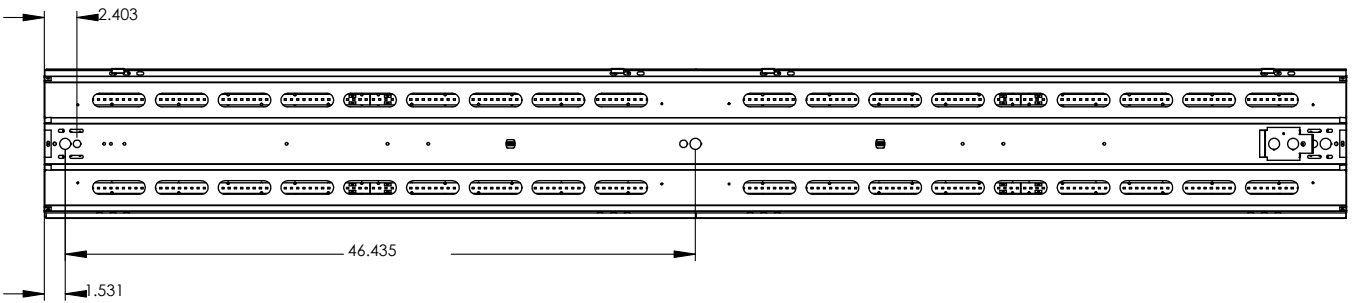


DIMENSIONS - UP and DOWN LIGHT

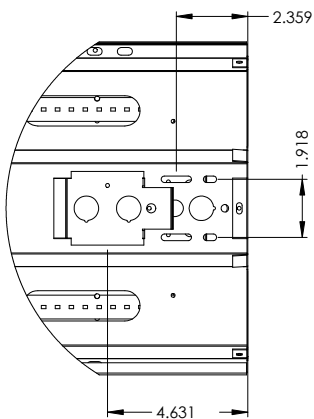
4ft



8ft



DETAILS VIEW



SECTION VIEW

