



Texas Fluorescents
Reinvented

CATALOG# :

PROJECT :

TYPE :

Series IND

LED Industrial Strip

Ideal for ceilings between 10 and 18 feet, the Series IND fixture is a workhorse that provides concentrated illumination in a commercial quality configuration for interior warehouse, retail, factory, garage, and utility areas. Offered with a variety of distributions and reflector attributes for maximum versatility.

CONSTRUCTION

The housing is die-formed from cold-rolled 22-gauge steel. The finish is high reflectance baked white enamel. A versatile end plate doubles as coupler for continuous row mounting, and the reflector is one single piece. Knockouts on back and end of housing are provided for flexible conduit attachment.

MOUNTING

Surface mount, chain hung, double stem.

TYPICAL OPTIONS & ACCESSORIES

Whips, fuses, wire guards and "EM" - emergency battery backup. Contact factory for more details.



DIMENSIONS

48L - 48.0"L x 10.55"W x 3.99"H

96L - 96.0"L x 10.55"W x 3.99"H

FEATURES & BENEFITS

- Surface, chain or stem mountable
- W3x, economical steel reflectors, for abusive locations. Three styles: symmetric, symmetric with uplight and asymmetric
- M2, premium full specular (mirrored) reflectors, for maximum efficiency. Four styles: Low (8-10ft), Standard (9-14ft), High Ceiling (12-24ft) and asymmetric
- W1x, white steel reflectors, combine economy and efficiency. Two styles: Standard (9-14) and High Ceiling (12-24ft) symmetric
- Variety of lumen packages/ wattages through use of programmable drivers
- Multiple Kelvin temperature options (3000K, 3500K, 4000K, 5000K); for RGBW option, consult factory
- Suitable for dry or damp locations
- CRI >80 standard, 90 optional
- L70: >50,000 hrs
- Dimming 0-10V 120-277V standard, 120 ELV/TRIAC optional
- Power factor 0.90
- Emergency battery backup available
- 5 year warranty



ORDER INFORMATION

Factory at your fingertips. Fill in the blanks to create your part number or create a custom configuration.

SERIES	LENGTH		WATTAGE* & LUMENS*		REFLECTOR		DRIVER		CCT/CRI**							
IND LED Industrial Strip	48L	48"	Y32W	32 Watts 5000 Lumens	W30	White steel reflector	DMV	0-10V Dimming	30K	3000K 80 CRI						
			Y48W	48 Watts 6900 Lumens							W35	White steel reflector asymmetric	G120	ELV/TRIAC Dimming at 120V only	35K	3500K 80 CRI
			Y57W	57 Watts 7800 Lumens												
	96L	96"	Y57W	57 Watts 7800 Lumens			50K	5000K 80 CRI								
			Y70W	70 Watts 9800 Lumens					930K	3000K 90 CRI						
			Y97W	97 Watts 12400 Lumens							935K	3500K 90 CRI				
			Y114W	114 Watts 14000 Lumens									940K	4000K 90 CRI		

OPTIONS	
EM	10W Emergency battery backup (internal, excludes less than 4ft.)
EM12	12W Emergency battery backup (remote only)
EM20	20W Emergency batter backup (remote only)

Note:

*Programmable LED drivers allow custom configured wattages and corresponding lumens.

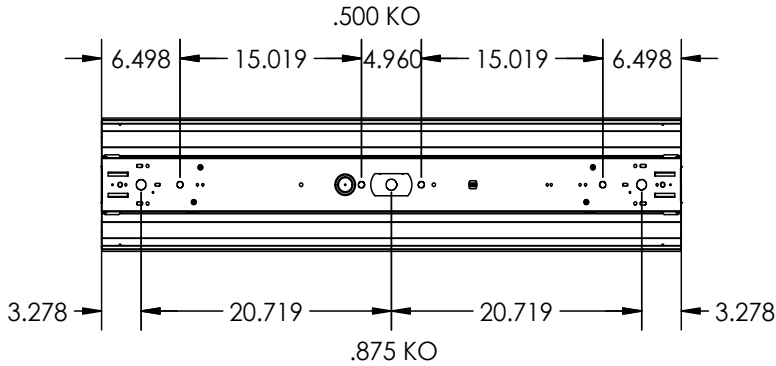
** Consult factory for 90 CRI 5000K availability.

We reserve the right to change design, materials, LEDs and finish in any way that will not alter installed appearance or reduce function and performance.

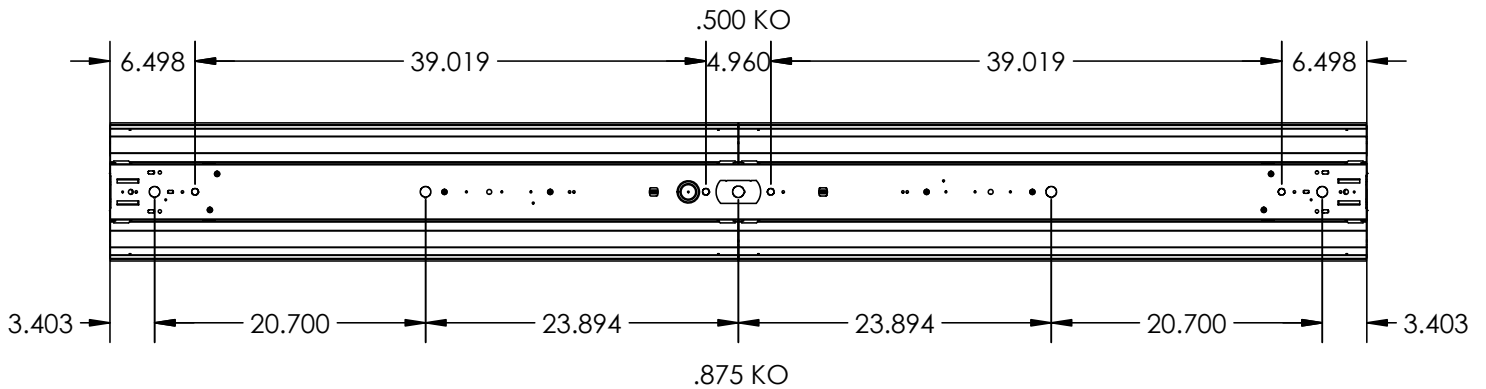
DRAWINGS & IMAGES

Back

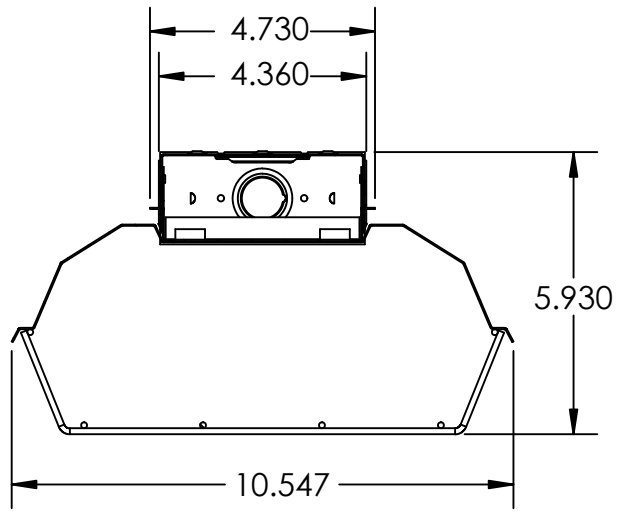
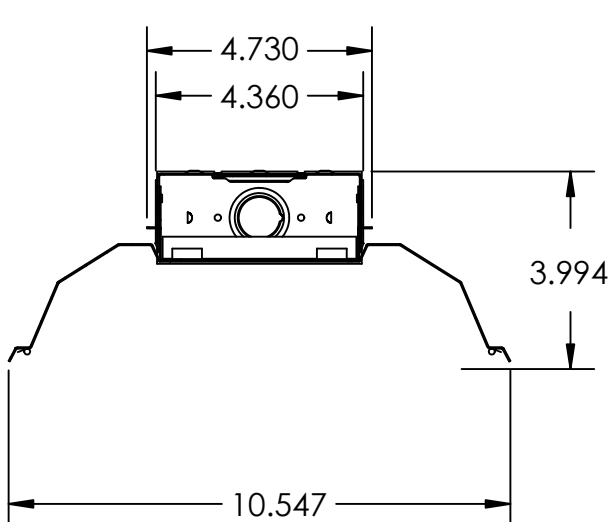
4 FT



8FT



END



WITH WIRE GUARD