

Series MAX/RDX

Choice of Round or Square Profile

Low Profile LED Strip

Full body micro-silhouette makes a bold statement with a minimal design in a variety of standard powder coated finish options, as well as custom colors. Scaled to the LED module, the drop frosted diffuser surrounds the LEDs for soft lighting. MAX/RDX fixture can be surface mounted on wall or ceiling or pendant mounted with specially engineering cable mounting kit. MAX/RDX fixtures can be used individually or in a continuous run, either surface, wall, or pendant mounted. Ideal for retail applications.

CONSTRUCTION

Housing is die-formed and embossed 22 gauge steel, chemically treated to both resist corrosion and also to enhance paint adhesion.

MOUNTING

Pendant mount or surface mount (horizontal or vertical).

TYPICAL OPTIONS & ACCESSORIES

See page 2 for multiple sensor options, finish options and emergency battery backup choices available.

MAX

RDX

DIMENSIONS

2"W Housing

24"L x 2"W x 2.972"H

36"L x 2"W x 2.972"H

48"L x 2"W x 2.972"H

96"L x 2"W x 2.972"H

3"W Housing

24"L x 3"W x 3.375"H

36"L x 3"W x 3.375"H

48"L x 3"W x 3.375"H

96"L x 3"W x 3.375"H

FEATURES & BENEFITS

- For individual use or in continuous runs through use of joining brackets
- Variety of lumen packages/wattages through use of programmable drivers
- Multiple color temperatures available (3000K, 3500K, 4000K and 5000K)
- Available with smooth frosted lens
- Multiple powder coat finish colors available
- Suitable for dry and damp locations
- Emergency battery backup available
- >50,000 hrs of L70 LED life
- CRI >80
- 0-10 Volts dimmable 120-277V
- Power factor > 0.90
- 5 year warranty



ORDER INFORMATION

Factory at your fingertips. Fill in the blanks to create your part number or create a custom configuration.

SENSOR ¹	SERIES	LENS	LENGTH	WATTAGE & LUMENS ²		DRIVER		CCT ³							
SD Daylight Harvesting	MAX2	2" Wide Square Housing	FR	Frosted Lens	24L	24"	Q14W	14 Watts 1700 Lumens	DMV	122-277VAC 0-10V Dimming	30K	3000K			
							Q22W	22Watts 2600 Lumens			35K	3500K			
					36L	36"	Q21W	21 Watts 2550 Lumens			40K	4000K			
	SS On/Off Sensor	RDX2	2" Wide Round Housing	FR	Frosted Lens			Q33W			33 Watts 3900 Lumens	40K	4000K	80CRI	80CRI
						48L	48"	Q28W			28 Watts 3400 Lumens	50K	5000K	80CRI	80CRI
								Q44W			44 Watts 5200 Lumens				
72L						72"	Q42W	42 Watts 5100 Lumens							
							Q66W	66 Watts 7800 Lumens							
96L						96"	Q56W	56Watts 6800 Lumens							
		Q88W	88 Watts 10400 Lumens												
MAX3	3" Wide Square Housing	FR	Frosted Lens	24L	24"	Q20W	20 Watts 2500 Lumens								
						B41W	41 Watts 5000 Lumens								
				36L	36"	Q28W	28 Watts 3000 Lumens								
	RDX3	3" Wide Round Housing	FR	Frosted Lens			B62W	62 Watts 7500 Lumens							
					48L	48"	Q41W	41 Watts 5000 Lumens							
							B82W	82 Watts 10000 Lumens							
72L	72"	Q56W	56 Watts 6000 Lumens												
		B123W	123 Watts 15000 Lumens												
96L	96"	Q82W	82 Watts 10000 Lumens												
		B164W	164 Watts 20000 Lumens												

FINISH ⁴		CONFIGURATION		FLAIR ⁵		EMERGENCY OPTIONS		OPTIONS/ACCESSORIES	
WH	White	Blank	Individual	RD	Red	EM14	14W Emergency backup (Remote mount only for fixtures 3ft and shorter; integrated in MAX3/RDX3 4ft and longer)	GT310	Cable kit with (2) 10' aircraft cable
BK	Black	-B	Beginner run	BL	Blue			GT315	Cable kit with (2) 15' aircraft cable
SI	Silver	-E	Ender run	BK	Matte Black			C15WH	15' 3 wires 18-gauge power cord
		-J	Joiner					C515WH	15' 5 wires 18-gauge power cord
								HC3015WWH	4ft White Canopy Kit with 5 Wire Cord
								HC3016WWH	4ft White Canopy Kit with 6 Wire Cord
								HC3025WWH	12ft White Canopy Kit with 5 Wire Cord
								HC3026WWH	12ft White Canopy Kit with 6 Wire Cord

Note:

- Sensors are not integrated and add approx. 3 inches to overall fixture length. Adding a sensor to an existing fixture requires rewiring.
- Minimum fixture wattage of 10W. Minimum 5W per fixture foot, maximum 20.5W per fixture foot. Programmable LED drivers allow custom configured wattages and corresponding lumens. Power feed cable is 18 AWG, a power drop will be required every 48 feet of fixture length OR every 800W, whichever comes first.
- Consult factory for 90CRI and 5000K availability.
- Finish refers to the color of the driver cover portion of the fixture body.
- Flair refers to the end caps and middle stripe of the fixture body. Choose a standard flair color for your fixture from the guide on the following page.

We reserve the right to change design, materials, LEDs and finish in any way that will not alter installed appearance or reduce function and performance.

CATALOG#: _____
PROJECT: _____
TYPE: _____

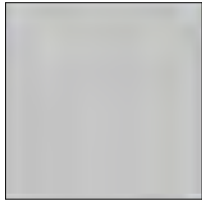
STANDARD FLAIR COLORS AND FINISHES



Gloss Black
(GB)



Matte Black
(BK)



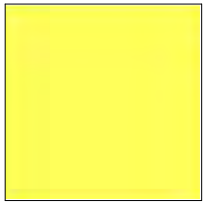
Matte Silver
(SL)



Statuary Bronze
(BZ)



Glimmer (Iron)
(IR)



Safety Yellow
(YL)



Safety Orange
(OR)



Red
(RD)



Fire Engine Red
(FR)

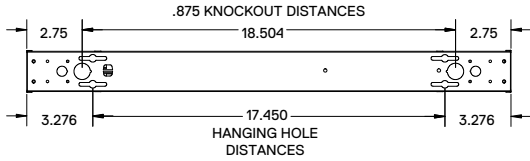


Blue
(BL)

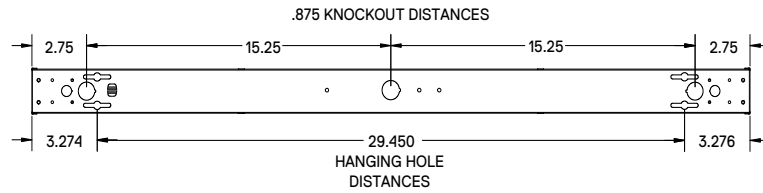
NOTE: Factory offers any Tiger Drylac RAL finish, contact Saylite for more information. Consult factory to special order custom 'real wood' finishes.

DRAWINGS & IMAGES

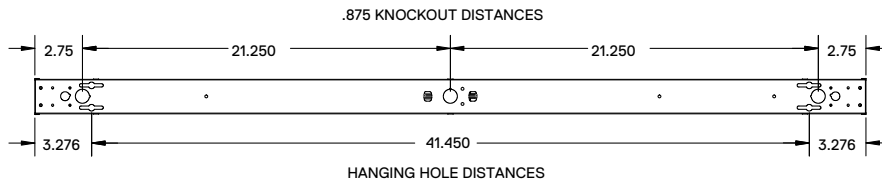
MAX2FR24L / RDX2FR24L



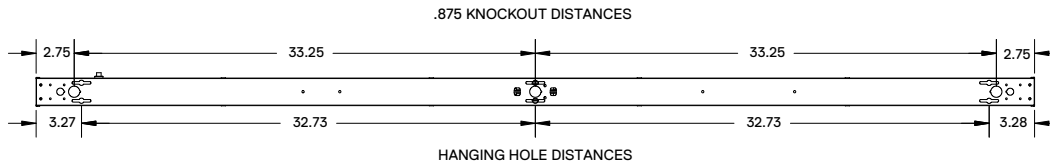
MAX2FR36L / RDX2FR36L



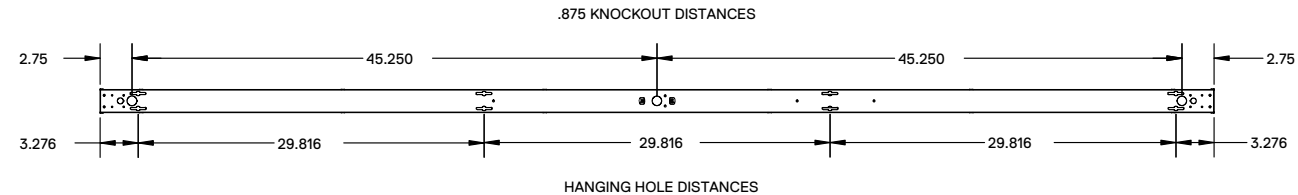
MAX2FR48L / RDX2FR48L



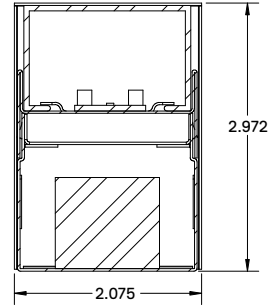
MAX2FR72L / RDX2FR72L



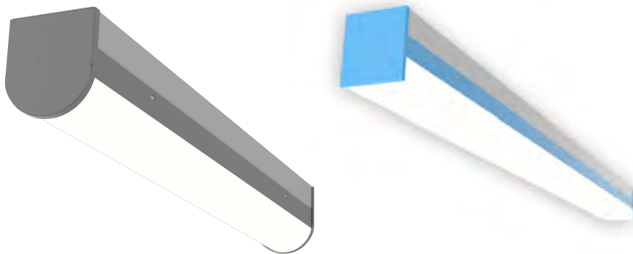
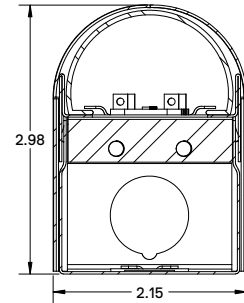
MAX2FR96L / RDX2FR96L



Square Lens Profile



Round Lens Profile



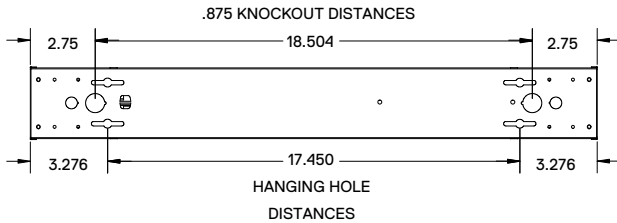
Consult factory for different finish

Replacement Lens Ordering Information

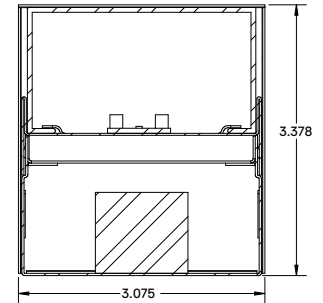
SERIES	DESCRIPTIONS
OMAX2FR24L	Replacement frosted lens for 24"L x 2.075"W
OMAX2FR48L	Replacement frosted lens for 48"L x 2.075"W
OMAX2FR96L	Replacement frosted lens for 96"L x 2.075"W
OMAX3FR24L	Replacement frosted lens for 24"L x 3.075"W
OMAX3FR48L	Replacement frosted lens for 48"L x 3.075"W
OMAX3FR96L	Replacement frosted lens for 96"L x 3.075"W

DRAWINGS & IMAGES

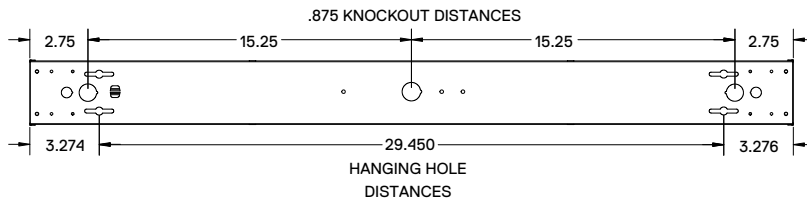
MAX3FR24L / RDX3FR24L



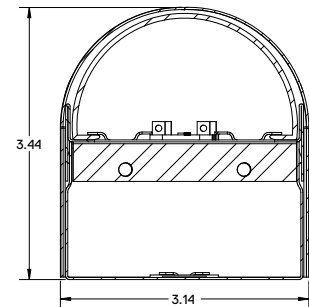
Square Lens Profile



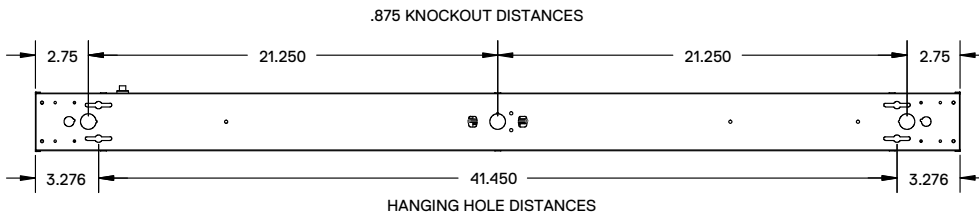
MAX3FR36L / RDX3FR36L



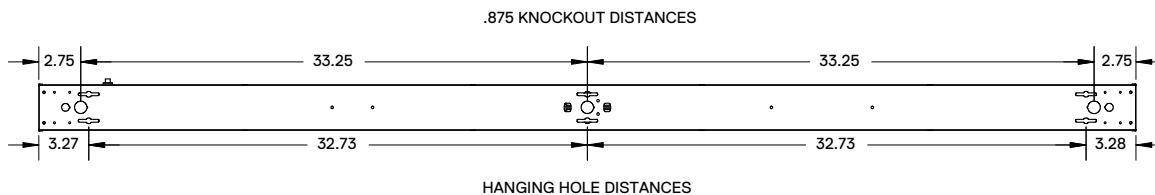
Round Lens Profile



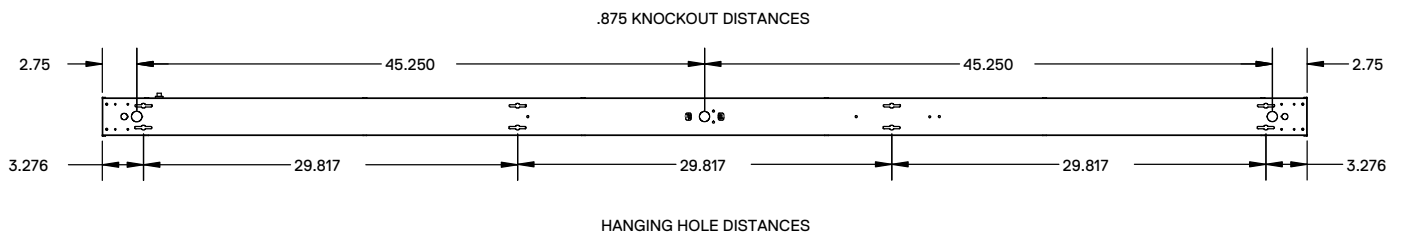
MAX3FR48L / RDX3FR48L



MAX3FR72L / RDX3FR72L



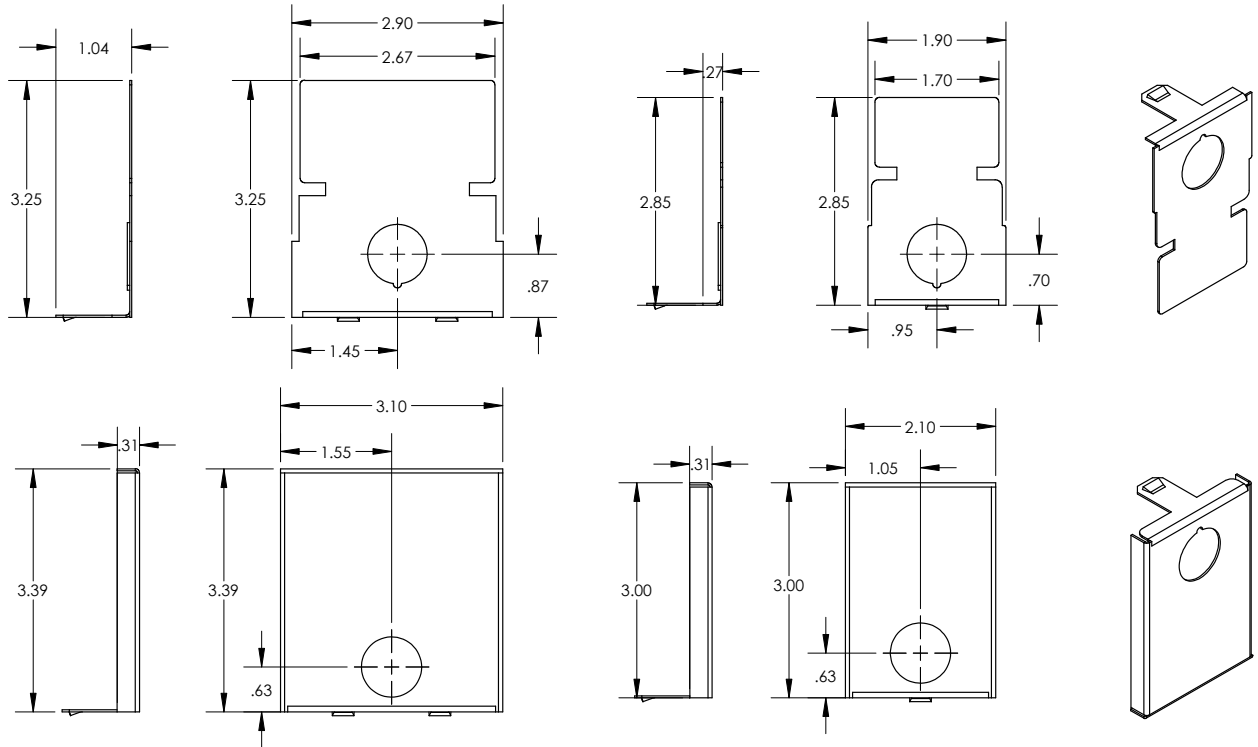
MAX3FR96L / RDX3FR96L



DRAWINGS & IMAGES

Endcaps

MAX Endcaps



RDX Endcaps

