

Series PRL

LED Perimeter Recessed Light

The High Performance Perimeter Recessed Light creates a wash of ambient and vertical illumination at the transition between the wall and the ceiling plane. Available in 2', 4', 6' & 8' sections with telescoping option in 4' and 5' only that can be combined to make longer runs, and 2", 4" and 6" regressed optic.

CONSTRUCTION

Steel sheet metal galvanized and powder coated body.
Internal joiner system, plug-together wiring standard.

DIFFUSER

Frosted diffusers

MOUNTING

The standard mounting (Threaded Rod -TR) option eliminates the need to install luminaires prior to the slot being framed. Luminaire mounts on threaded rods. Wall bracket allows fixture to remain stable on uneven walls. Luminaire installation that uses the mounting bracket must be performed before the perimeter slot framing is built.

LENGTHS

Standard 2', 3', 4', and 8' section lengths can be combined to make longer runs. Optional tele-scoping sections on straight runs make luminaire adjustable from 50" to 60" in a 4ft and 62" to 72" in a 5ft. Telescoping sections are available on only one end of the luminaire.



DIMENSIONS

2ft.-4"W x 24"L x 2"/4"/6"H

4ft.-4"W x 48"L x 2"/4"/6"H

6ft.-4"W x 72"L x 2"/4"/6"H

8ft.-4"W x 96"L x 2"/4"/6"H

FEATURES & BENEFITS

- Can be recessed on T-bar ceiling or wall mounted with a wall bracket
- Attractive source of direct lighting for use in offices, hallways, conference rooms and medical facilities
- Suitable for dry or damp location
- >50,000 hrs of L70 LED life
- CRI >80
- 0-10 Volt dimmable 120-277V
- Power Factor >0.90
- 100 lm/w
- 0-10V dimming or Triac dimming
- 5 year warranty.

SPECIFICATIONS

END CAPS

The luminaire can terminate in three different end conditions to accommodate project needs. Endcaps are made of 22-gauge die-formed steel.

END CONDITIONS:

Beginner (B) or End (E)

Standard is used when the luminaire terminates at a wall. Adds 1/8" per endcap to overall length of the luminaire. When luminaire doesn't terminate at a wall, a special endcap is added to the luminaire that adds 1/2" to overall length of the run.

Telescoping (T)

Provides up to 12" of additional illuminated section to accommodate variances in the built-in wall slot.

Telescoping available on only one end of 4' or 5' luminaire sections. Adds a minimum of 2" at the end to overall section length. Telescoping section must end at wall and be secured with bracket (provided).

FEED

Standard with one 18-gauge/5-conductor single-circuit feed. 14-gauge feed used when luminaire current exceeds 5 amps. Optional 6' flex conduit whips available. Dual knockouts (for dual flex conduit) are available at the top and rear feed locations. Endcaps have a single knockout and support a single flex conduit only.



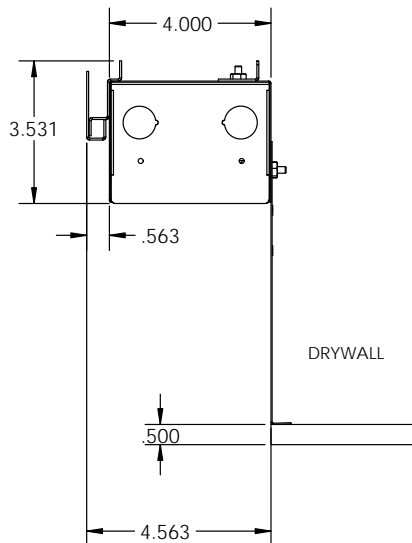
T - Telescoping



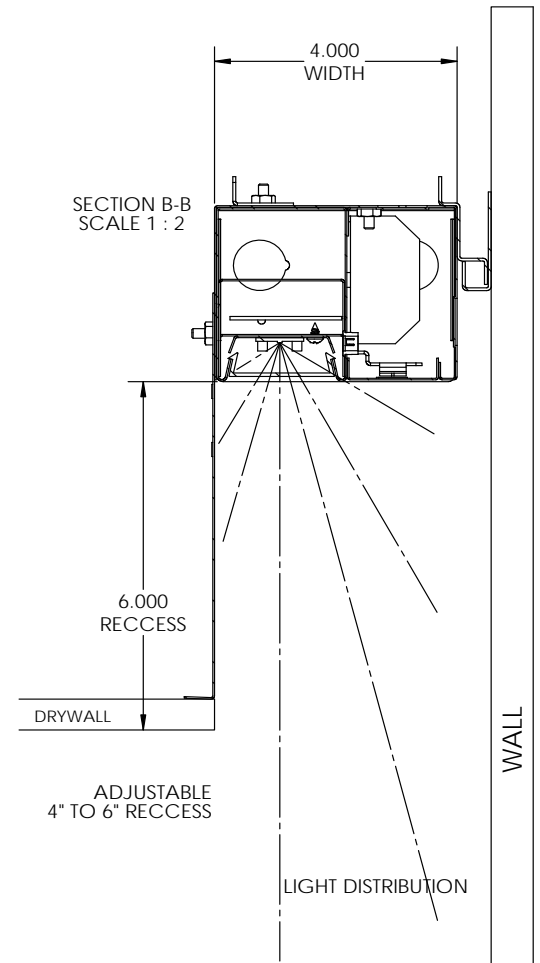
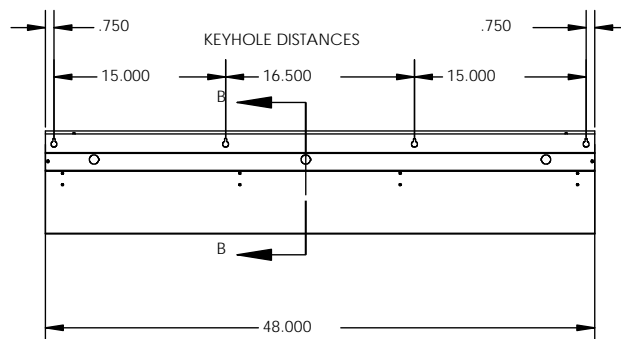
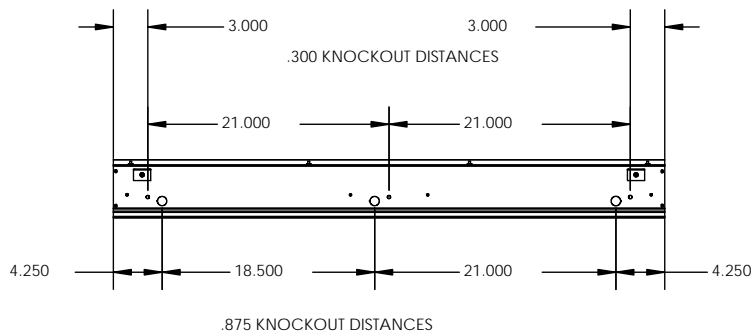
**Standard Fixture
End View**

DIMENSIONS

END VIEW



SIDE VIEW



We reserve the right to change design, materials, LEDs and finish in any way that will not alter installed appearance or reduce function and performance.

CATALOG# :

PROJECT :

TYPE :

Series PRL

LED Perimeter Recessed Light

PRODUCT NUMBERS

SERIES	MOUNTING	OPTIC SIZE	CEILING	LENS	LENGTH	WATTAGE & LUMENS
PRL PERIMETER RECESSED LIGHT	TR Threaded Rod <small>*For Grid Ceiling Installation</small>	42 4"W x 2"H	RF Flange Behind Drywall	SF Snap-in frosted acrylic lens (85% transmission) Special for LEDs; only available for uplight and downlight	24L 24"	R16W1600L 16 Watts 1600 Lumens
		44 4"W x 4"H			48L 48"	R32W3200L 32 Watts 3200 Lumens
		46 4"W x 6"H			72L 72"	R48W4800L 48 Watts 4800 Lumens
					96L 96"	R64W6400L 64 Watts 6400 Lumens

DRIVER	CCT	CRI**	CONFIGURATION	OPTIONS
DMV 0-10V Dimming	30K 3000K 35K 3500K 40K 4000K 50K 5000K	BLANK 80CRI 90 90 CRI	-B Beginner Run -E Ender Run -J Joiner -T Telescoping <small>*Only available in 4' section, adjustable from 50" to 60"; and 5' section, adjustable from 62" to 72"</small>	EM 10 Watt Emergency Battery Backup for 90 mins <small>*Require to be remoted for length 3ft or under</small>
G120 ELV/Triac Dimming at 120W only (only available with SS sensor)				
D1MV 0-10V Dimming (dim to 1%)				
DMV(xx) 0-10V Dimming (xx) for percentage of light output when not occupied. (required for SV sensor)				

*Programmable LED drivers allow custom configured wattages and corresponding lumens.

** Consult factory for 90 CRI 5000K availability.

NOTE: Values shown are typical or recorded under standardized conditions at 25°C. Actual performance may vary based environment or application. Specifications are subject to change without notice. We reserve the right to change design, materials, LED's and finish in any way that will not alter installed appearance or reduce function and performance.