

JOB NAME:

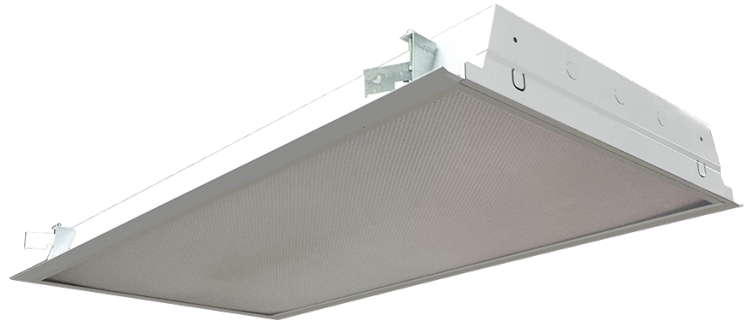
CAT#:

TYPE:

APPLICATIONS

Premium quality flanged troffer suitable for drywall, plaster and Z-spline ceilings. Ideal for commercial and industrial buildings requiring general illumination with flanged configurations.

Housing is die-formed and embossed from cold rolled steel for extra rigidity and strength. Finish is high reflectance P3 - Post Powder Paint. Designed for installation in drywall ceilings. Fixtures are installed from below the ceiling and have overlapping trim flanges. Adjustable Uni-Lugs secure the fixture to the ceiling. Listed by and bears UL label. Listed by and bears UL label.

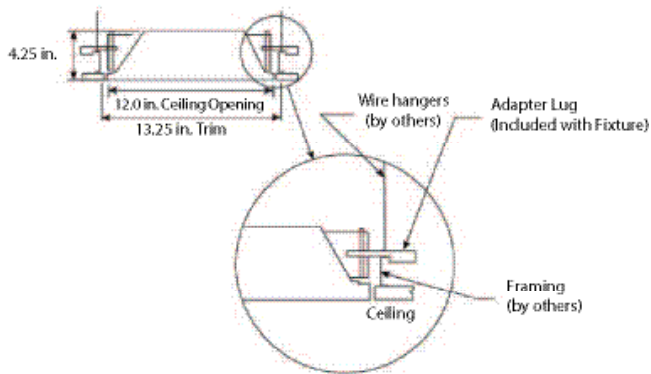


FEATURES & BENEFITS

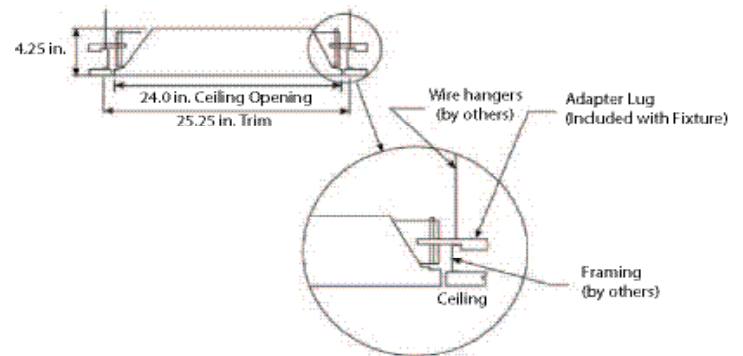
- Technology - Post Powder Paint
- > 90% reflectivity
- IC Rated
- Corrosion and scratch resistant
- Smooth edges for easy handling
- Four adjustable Uni-Lugs for easy installation
- Fixture end flanges are removable for row mounting
- Joiner channels are included
- Corner hinging for easy insertion and removal of shielding frame
- Flush steel lens frame is screw assembled for easy diffuser replacement
- Housing ends are secured by unique corner interlock and screws
- Metal to metal light leak protection on all four sides of shielding frame
- Equipped with Integral Earthquake Clips
- $cETL_{us}$ listed for damp locations for up to 67 Watts

DIMENSIONS

RF1x4 Dimensions



RF2x4 Dimensions





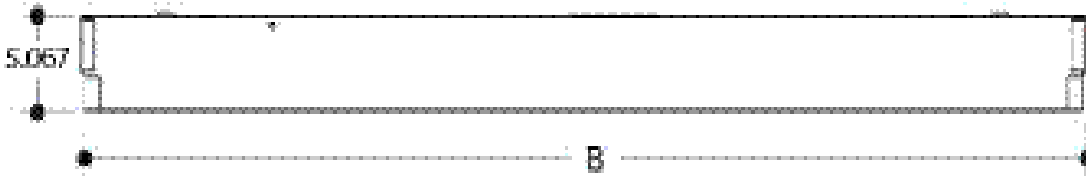
JOB NAME:

CAT#:

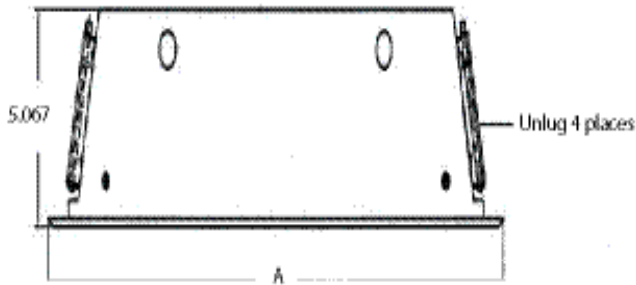
TYPE:

DIMENSIONS

SIDE VIEW



END VIEW



MODEL CONFIGURATION	A	B
1' x 4'	13 1/4"	50 1/2"
2' x 4'	25 5/8"	49 3/4"

ROUGH-IN OPENINGS	A	B
1' x 4'	11 1/4"	48 1/4"
2' x 4'	23 1/4"	48 1/4"





JOB NAME:

CAT#:

TYPE:

ORDERING

EXAMPLE: RF 24 LED 32 DMV 30 S5

RF		LED							
1. SERIES	2. SIZE	3. GEAR	4. WATTAGE/LUMENS		5. DRIVER	6. LENS		7. COLOR TEMP	
RF Flanged Troffer	14 1x4	LED	32	32W 3450 Lumens	DMV 120-277V Multivolt 0-10V Dimmable	Blank	A12 .100 thick lens	30	3000K
	24 2x4		48	48W 4800 Lumens		125	A12 .125 thick lens	35	3500K
			57	57W 5400 Lumens		156	A19 .156 thick lens	40	4000K
					SDMV Step dimming Multivolt	CL	Clear .100 thick lens	50	5000K
					D347 347VAC 0-10V Dimming	CL125	Clear .125 thick lens		
					D120 Triac Dimming 120VAC	SW	Smooth White .100 thick lens		
					D277 Triac Dimming 277VAC	DD	Drop Dish Lens		
						A78	78 Cell (2x4) or 36 Cell (2x2)		

10. LOUVER

- S5** Specular Parabolic Louver (1/2"x1/2"x3/8")
- S7.5** Specular Parabolic Louver (3/4"x3/4"x3/8")
- S1.5** Specular Parabolic Louver (1 1/2"x1 1/2"x1")
- W5** White Parabolic Louver (1/2"x1/2"x3/8")

NOTE: Values shown are typical or recorded under standardized conditions at 25°C. Actual performance may vary based on environment or application. Specifications are subject to change without notice. We reserve the right to change design, materials, LED's and finish in any way that will not alter installed appearance or reduce function and performance.

