



JOB NAME:

CAT#:

TYPE:

APPLICATIONS

This high performance perimeter recessed light creates a wash of ambient and vertical illumination at the transition between the wall and the ceiling plane. It is available in 2', 4', 6', and 8' sections with telescoping options that can be combined to make longer runs, and 4" regressed optic. The PER-LED is ideal for offices, hallways, conference rooms, and medical facilities.

MOUNTING:

The standard mounting (Threaded Rod -TR) option eliminates the need to install luminaires prior to the slot being framed. The luminaire mounts on threaded rods. The gasket runs the length of the luminaire ensuring a clean finish at the wall. Optional mounting includes a wall bracket that is attached to the wall. Luminaires are then snapped onto the bracket. The luminaire installation that uses the mounting bracket must be performed before the perimeter slot framing is built.

END CAPS:

The luminaire can terminate in three different end conditions to accommodate project needs. End caps are made of 22-gauge, die-formed steel.

END CONDITIONS:

BEGINNER (B) OR END (E)

Standard is used when the luminaire terminates at a wall. It adds 1/8" per end cap to overall length of the luminaire.

JOINER (J)

Includes the necessary hardware to accommodate ceiling materials when the luminaire doesn't terminate at a wall. Adds 1 1/4" for spackle flange and 1" for T-Bar per end cap to overall length of the luminaire.

TELESCOPING (T)

Provides up to 12" of additional illuminated section to accommodate variances in the built-in wall slot. Telescoping available only on one end of 4' luminaire sections. Adds a minimum of 2" at the end to overall section length. Telescoping section must end at wall and be secured with bracket (provided).

FEED:

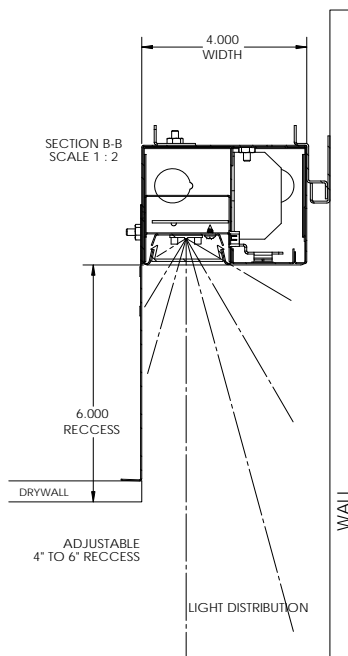
Standard with one 18-gauge/5-conductor single-circuit feed. 14-gauge feed used when luminaire current exceeds 5 amps. Optional 6' flex conduit whips available. Dual knockouts (for dual flex conduit) are available at the top and rear feed locations. End caps have a single knockout and support a single flex conduit only.



FEATURES & BENEFITS

- Steel sheet metal galvanized and powder coated body
- Internal joiner system, plug-together wiring standard
- $L_{70} > 50,000$ hrs.
- Min CRI 80
- Power factor 0.99
- Suitable for dry or damp locations
- 5 year warranty

DIMENSIONS





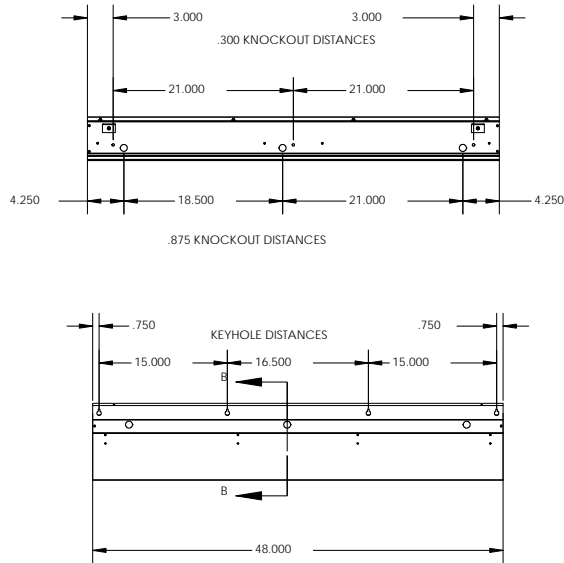
JOB NAME:

CAT#:

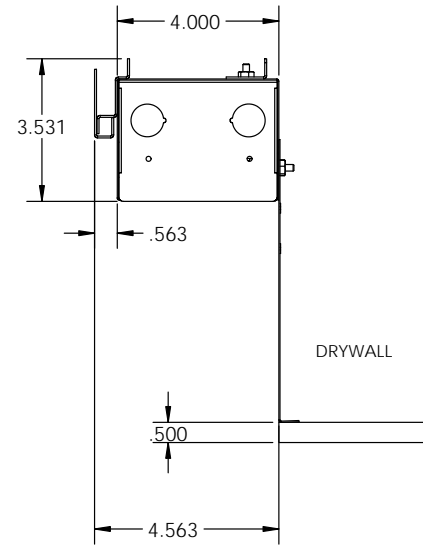
TYPE:

DIMENSIONS

SIDE VIEW



END VIEW



ORDERING

EXAMPLE: PER TR 24 LED 16 DMV 42 RF SF 30 EM

PER		LED					
1. SERIES	2. MOUNTING	3. SIZE	4. GEAR	5. WATTAGE/LUMENS	6. DRIVER	7. OPTIC SIZE	8. CEILING
PER	TR Threaded Rod *For grid ceiling installation W Wall Bracket *For drywall installation	24 24" 48 48" 72 72" 96 96"	LED	16 15 Watts 1600 Lumens 32 32 Watts 3200 Lumens 48 48 Watts 4800 Lumens 64 64 Watts 6400 Lumens	DMV 120-277V 0-10V Dimmable TDMV 120-277V Triac Dimmable	42 4"W x 2"H 44 4"W x 4"H 46 4"W x 6"H	RF Flange Behind Drywall
9. LENS	10. COLOR TEMP	11. EMERGENCY(O) ²	12. CONFIGURATION				
SF Snap in frosted acrylic lens	30 3000K 35 3500K 40 4000K 50 5000K	EM Emergency Battery Backup	Blank Individual -B Beginner Run -E Ender Run -J Joiner -T Telescoping ¹				

Notes:

¹Only available in 4' section, adjustable from 50" to 60"

²O is Optional

NOTE: Values shown are typical or recorded under standardized conditions at 25°C. Actual performance may vary based on environment or application. Specifications are subject to change without notice. We reserve the right to change design, materials, LED's and finish in any way that will not alter installed appearance or reduce function and performance.

