



JOB NAME:

CAT#:

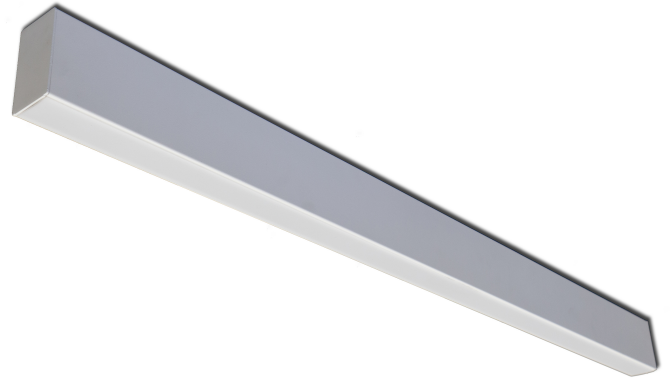
TYPE:

APPLICATIONS

A linear 2x3 fixture for distinctive architectural lighting plans. Ideal for corridors, lobbies and office areas, 2x3 Series fixtures can be installed individually or in a continuous run. Specifically designed for direct/indirect lighting with snap-in lens to hide the LED arrays. Ideal where downlight and uplight are required.

FEATURES & BENEFITS

- Available in custom finishes (consult factory)
- Fixtures can be surface mounted to the wall or ceiling or pendant hung by engineered hanging kit
- $cETL_{US}$ listed for damp locations up to 90 watts
- $L_{70} > 50000$ hrs.
- Min CRI 80
- PL3D comes standard (fixture to fixture wiring options for power and dimming)
- 5 year warranty

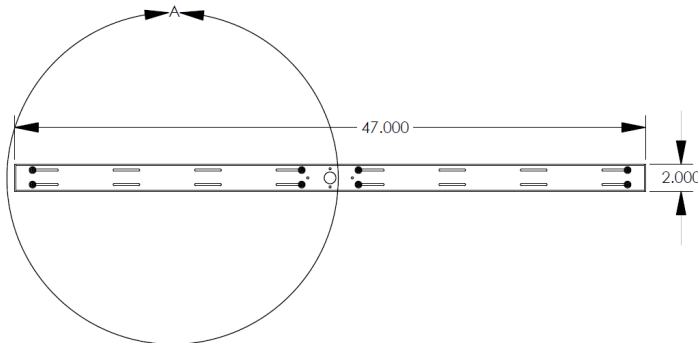
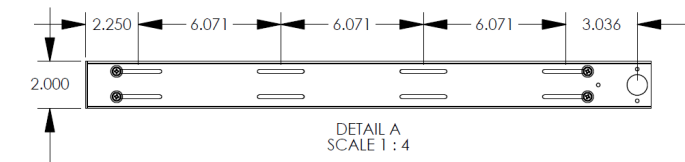


DIMENSIONS

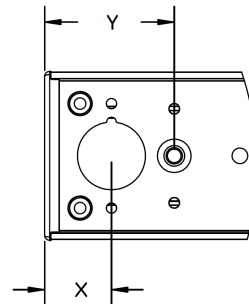
Part	L	W	H	X	Y
L23P24	24"	2"	3"	0.8"	1.55"
L23P48	48"	2"	3"	0.8"	1.55"
L23P96	96"	2"	3"	0.8"	1.55"

L = Length
W = Width
H = Height
X = Knock Out Distance
Y = Hanging Kit Distance

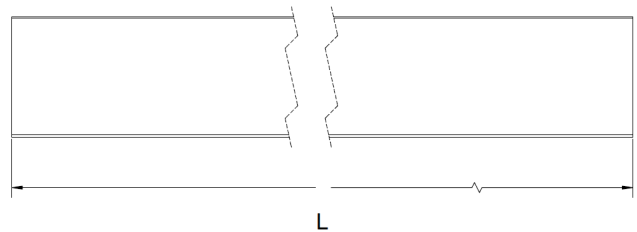
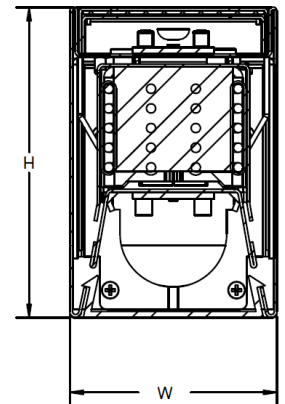
Wall Mount



Pendant/Surface Mount



End Side View



Dimensions and specifications subject to change without notice.





JOB NAME:

CAT#:

TYPE:

ORDERING

EXAMPLE: L23 W 24 LED 13 DMV BK SF 30 EM SS H6W5

LED

1. SERIES	2. MOUNTING	3. LENGTH	4. GEAR	5. LED MODULE DISTRIBUTION	6. WATTAGE/LUMENS	7. DRIVER	
L23	P Pendant	24 24"	LED	Blank Downlight (std.) 1U2D Uplight and Downlight	Downlight		DMV 120-277V Multivolt 0-10V Dimmable SDMV Step dimming Multivolt D347V 347VAC 0-10V Dimming D120 Triac Dimming 120VAC D277 Triac Dimming 277VAC
	S Surface ¹	48 48"			24 in.		
	W Wall	96 96"			13 13 Watts 1300 Lumens	19 19 Watts 1900 Lumens	
					48 in.		
					26 26 Watts 2600 Lumens	38 38 Watts 3800 Lumens	
					45 45 Watts 4500 Lumens	96 in.	
					52 52 Watts 5200 Lumens	76 76 Watts 7600 Lumens	
					90 90 Watts 9000 Lumens	1 Up and 2 Down Only	
					24 in.		
					18 18 Watts 600U-1200D	27 27 Watts 900U-1800D	
					48 in.		
					36 36 Watts 1200U-2400D	54 54 Watts 1800U-3600D	
					96 in.		
				72 72 Watts 2400U-4800D	108 108 Watts 3600U-7200D		

8. FINISH ²	9. LENS	10. COLOR TEMP	11. EM (O) ⁵	13. HANGING KIT (O) ⁵	14. CONFIGURATION
BK Black	SF Snap-in Frosted Acrylic Lens (85% transmission)	30 3000K	EM Emergency Battery Backup ³	H6W5 HC606 cable kit with 6' cable & 5 wire power feed/cable incl. & white canopy ⁴ H12W5 HC612 cable kit with 12' cable & 5 wire power feed/cable incl. & white canopy ⁴ 2SCS24WH Two stem kits with 24" stem, canopy, and mounting	Blank Individual -B Beginner Run -E Ender Run -J Joiner Run
SI Silver		35 3500K			
WH White		40 4000K			
		50 5000K			

ACCESSORIES

- A-HCPF606WH** Pendant mount 5 wire power feed canopy kit, 6' cable with white canopy
- A-HCPF612WH** Pendant mount 5 wire power feed canopy kit, 12' cable with white canopy
- A-HCNP606WH** Pendant mount non-power canopy kit, 6' cable with white canopy
- A-HCNP612WH** Pendant mount non-power canopy kit, 12' cable with white canopy

Notes:

- ¹Downlight only
- ²Consult for custom finish options
- ³Consult for EM options. If not specified EM pack will be remote mounted
- ⁴Replace "W" with "B" for black canopy. Consult for more color options.
- ⁵(O) is optional

NOTE: Values shown are typical or recorded under standardized conditions at 25°C. Actual performance may vary based on environment or application. Specifications are subject to change without notice. We reserve the right to change design, materials, LED's and finish in any way that will not alter installed appearance or reduce function and performance.

Cable Kit Includes:

- 1 - power feed kit w/ 6' or 12', 5 wire power cable w/ clear cord, white canopy, and mounting kit
- 1 - non-power feed kit w/ 6' or 12' non-powerfeed cable w/ clear cord, white canopy, and mounting kit

