

JOB NAME:
CAT#:
TYPE:

APPLICATIONS

Premium grade surface mounted wraparound luminaire with low brightness linear sides. For use in indoor applications where high efficiency, high performance and ease of installation is required. Ideal for retail stores, stairwells, utility areas, schools, offices and public buildings.

- Clear acrylic diffuser with prismatic bottom and ribbed linear sides
- Diffuser self-aligns and hinges from either side for easy maintenance
- Surface, stem or chain mountable
- Single or continuous row mounting capability
- UL listed for damp location

CONSTRUCTION

Housing and ends are die-formed from cold rolled steel. Finish is high reflectance baked white enamel with a reflectance factor exceeding 86%. Diffuser hinges from either side in a lift and shift manner and is self centering. UL listed for damp locations.

The most economical, practical, and user friendly series of LED fixtures with energy savings, quality of light, long life and hassle-free maintenance/ EZLED fixtures are UL listed with the latest LED T8 bypass lamps. These fixtures provide over 44% energy savings over comparable fluorescent fixtures utilizing less expensive fixtures than the fluorescent version (no ballast required). They also provide the flexibility to change the wattage and color temperature at any time. Are you concerned about maintenance with an LED array and driver fixture? EZLED resolves that issue by utilizing a self-contained LED lamp that fits into your fixture just like the classic fluorescent tube. The fixture performance will evolve over time with the evolution of the T8 LED lamp technology, and our five-year warranty guarantees a reliable, high quality product.

FEATURES & BENEFITS

Our EZLED fixtures come standard with SaveGreen T8 LED lamps. They are available in 2 or 4 foot sizes in different wattage, lumens, and color temperature options (see lamp options and specifications at www.savegreenlighting.com).

- L70 > 50000 hrs.
- Operating temperature: -20°C to 50°C
- Color Temperature: 3500K, 4000K, 5000K
- G13 pins (same as fluorescent linear T8 bipin)
- AC100-277V
- Integral driver (non-isolated) eliminates the need for external driver or ballast
- Environmentally friendly, no mercury used
- UL Classified
- Min CRI 80
- 5 year warranty



Optional Dimming

The 4 foot lamps are available with a dimming option. Specially designed dimming lamps require an external driver that runs 1 or 2 lamps (more than 2 lamps require multiple external drivers).

Emergency Options

The standard EZLED lamps require an inverter or an all-in-one emergency kit that includes LED array, battery, and driver. Dimmable T8 LED with external driver works with standard LED EM in it.

DIMENSIONS

- 2 lamp - 11.25 x 24 x 3.4 (2ft)
- 2 lamp - 11.25 x 48 x 3.4 (4ft)
- 4 lamp - 15.8 x 48 x 3.4 (4ft)
- 4 lamp - 15.8 x 96 x 3.4 (8ft)
- 8 lamp - 15.8 x 96 x 3.4 (8ft)



Dimensions and specifications subject to change without notice.

Note: In order for UL safety certification to be valid, only approved lamps may be installed in the fixture and must be shipped with the fixture from the factory.



JOB NAME:

CAT#:

TYPE:

ORDERING

EXAMPLE: 772 2 17 LED7W 30 WP INV5

772

1. SERIES	2. # OF LAMPS	3. LAMP TYPE	4. WATTAGE/LUMENS	5. COLOR TEMP	6. LAMP BRAND		
772	2 2 Lamps	17 24 inch T8	T8 Options	30 3000K	Blank House Brand Lamp (Savegreen) KEY Keystone Brand JAM James Brand**		
	3 3 Lamps	32 48 inch T8	2 ft.	35 3500K			
	4 4 Lamps	32TAN 96 inch T8	LEDL7W 7 Watts 950 Lumens Keystone	4 ft.		40 4000K	
		54* 46 inch T5HO	LEDL15W 9 Watts 1050 Lumens			50 5000K	
			LEDL12W 12.5 Watts 1750 Lumens Keystone				**Special Order
			LEDL15W 15 Watts 1740 Lumens				
			LEDL18W* 18 Watts 2500 Lumens				
			8 ft.				
			LEDL12W 12.5 Watts 1750 Lumens Keystone				
			LEDL15W 15 Watts 1740 Lumens				
		LEDL18W* 18 Watts 2500 Lumens					
		T5 Options					
		LEDL25W 25 Watts 3300 Lumens					

*Only available in 840 & 850

8. CORD	10. INVERTER
WP 6' Whip, 3 Wire	INV5 5W Integrated
A69 Wireguard per 4 ft.	Inverter
A144 (2) V-Hook & (2) ft.chain	
	*Consult for other options

ACCESSORIES

Lumens are subject to a tolerance of ±10% and not relevant to RGB
Input wattage can vary depending on options
Dimensions and specifications subject to change without notice.

Dimensions and specifications subject to change without notice.

Note: In order for UL safety certification to be valid, only approved lamps may be installed in the fixture and must be shipped with the fixture from the factory.



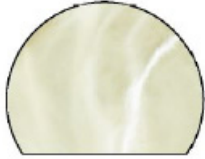


JOB NAME:

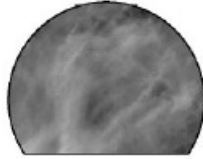
CAT#:

TYPE:

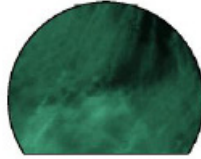
END CAP COLOR SELECTION GUIDE



IV-Ivory Marble



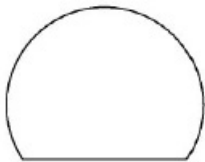
BM-Black Marble



VG-Verde Green



PM-Peach Marble



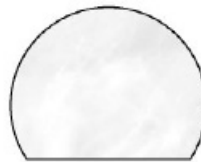
SW-Solid White



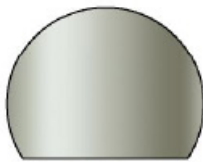
AL-Alabaster



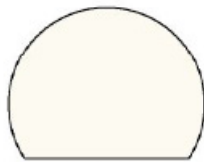
TO-Tortoise



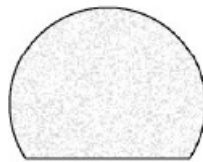
WM-White Marble



SV-Silver
(narrow only)



BW-Bone White



BG-Black Gravel

Note: In order for UL safety certification to be valid, only approved lamps may be installed in the fixture and must be shipped with the fixture from the factory.