



**JOB NAME:**

**CAT#:**

**TYPE:**

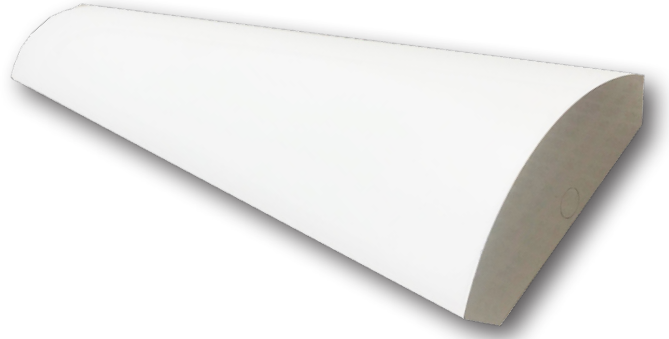
## APPLICATIONS

Economically designed premium round wraparound provides reliable and efficient lighting. Ideal for use in indoor applications such as homes, modular homes, mobile homes, stores and public buildings where low glare and ease of installation is required.

- Nominal 9" width
- Ribbed Linear acrylic diffuser- available in clear or frosted
- Available in 48 inch or 96 inch lengths
- Rounded lens for unique appearance
- Single or continuous row mounting capability
- Surface or pendant mountable
- cUL<sub>us</sub> listed for damp location

Fixture housing, lampholder brackets and sections, and reflector are constructed of code-gauge die-formed steel. All devices are UL/CUL listed, and suitable for damp locations. Ballasts and lampholders are replaceable without removing the fixture from the ceiling. All metal parts are painted after fabrication with post powder paint.

The most economical, practical, and user friendly series of LED fixtures with energy savings, quality of light, long life and hassle-free maintenance/ EZLED fixtures are UL listed with the latest LED T8 bypass lamps. These fixtures provide over 44% energy savings over comparable fluorescent fixtures utilizing less expensive fixtures than the fluorescent version (no ballast required). The also provide the flexibility to change the wattage and color temperature at any time. Are you concerned about maintenance with an LED array and driver fixture? EZLED resolves that issue by utilizing a self-contained LED lamp that fits into your fixture just like the classic fluorescent tube. The fixture performance will evolve over time with the evolution of the T8 LED lamp technology, and our five-year warranty guarantees a reliable, high quality product.



### Emergency Options

The standard EZ LED Lamps require an inverter or an All-in-one emergency kit that includes LED array, battery and driver. Dimmable T8 LED with external driver works with standard LED EM it. See emergency options and specs at [www.mobern.com/EZLEDemergency](http://www.mobern.com/EZLEDemergency).

### Optional Dimming

The 4 foot lamps are available with a dimming option. Specially designed dimming lamps require an external driver that runs 1 or 2 lamps (more than 2 lamps require multiple external drivers).

## FEATURES & BENEFITS

Our EZLED fixtures come standard with SaveGreen T8 LED lamps. They are available in 2 or 4 foot sizes in different wattage, lumens, and color temperature options (see lamp options and specifications at [www.savegreenlighting.com](http://www.savegreenlighting.com)).

- L70 > 50000 hrs.
- Operating temperature: -20°C to 50°C
- Color Temperature: 3500K, 4000K, 5000K
- G13 pins (same as fluorescent linear T8 bipin)
- AC100-277V
- Integral driver (non-isolated) eliminates the need for external driver or ballast
- Environmentally friendly, no mercury used
- UL Classified
- Min CRI 80
- Dimensions and specifications subject to change without notice.
- 5 year warranty

## DIMENSIONS

### SIZE W x L x H in inches

9<sup>9/16</sup>"W x 48"L x 3<sup>3/16</sup>"Dp  
9<sup>9/16</sup>"W x 96"L x 3<sup>3/16</sup>"Dp

**Note: In order for UL safety certification to be valid, only approved lamps may be installed in the fixture and must be shipped with the fixture from the factory.**





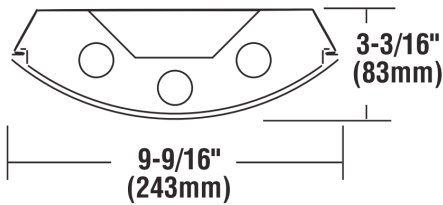
JOB NAME:

CAT#:

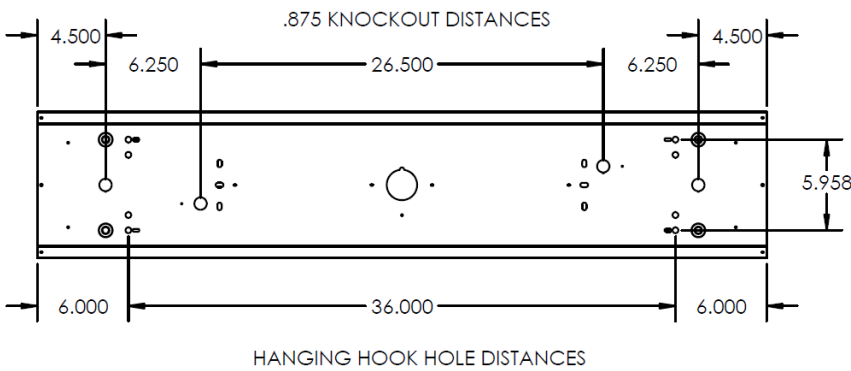
TYPE:

**DIMENSIONS**

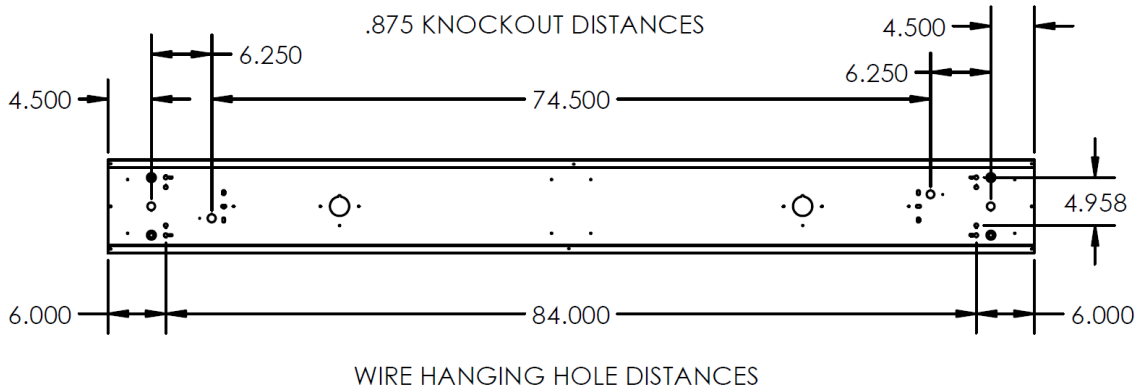
**End View**



**48 Inch**



**96 Inch**



Dimensions and specifications subject to change without notice.



Note: In order for UL safety certification to be valid, only approved lamps may be installed in the fixture and must be shipped with the fixture from the factory.



JOB NAME:

CAT#:

TYPE:

**ORDERING**

EXAMPLE: 771 1 28 LED L12W RL 830 EM INV5

**771**

**LED**

1. SERIES	2. # OF LAMPS	3. LAMP TYPE	4. GEAR	5. LENS	6. LAMP WATTAGE	7. COLOR TEMP
<b>771</b> Wraparound	1 1 Lamp	<b>28</b> 46" T5	<b>LED</b>	<b>RL</b> Ribbed Linear	<b>T8 OPTIONS</b> <b>4 ft.</b>	<b>830</b> 3000K <b>835</b> 3500K <b>840</b> 4000K <b>850</b> 5000K
	2 2 Lamps	<b>28TAN</b> 2-46" TAN T5				
	3 3 Lamps	<b>32</b> 48" T8 <b>32TAN</b> 2-48" TAN T8 <b>54*</b> 46" T5HO <b>54TAN*</b> 2-46" TAN T5HO				
		*Only available in 840 & 850				
					<b>L12W</b> 12.5 Watts 1750 Lumens <u>Keystone</u>	
					<b>L15W</b> 12 Watts 1740 Lumens	
					<b>L18W</b> 18 Watts 2500 Lumens*	
					<b>8 ft.</b>	
					<b>L12W</b> 12.5 Watts 1750 Lumens <u>Keystone</u>	
					<b>15W</b> 15 Watts 1740 Lumens	
					<b>L18W*</b> 18 Watts 2500 Lumens*	
					<b>T5 Options</b>	
					<b>L25W</b> 25 Watts 3300 Lumens	

\*Premium lamp option

8. LAMP BRAND	10. INVERTER
<b>Blank</b> House Brand	<b>INV5</b> 5W Integrated Inverter
<b>KEY</b> Keystone Brand	
<b>JAM</b> James Brand**	

\*\* Special order

*Cord & Whip Ordering Chart (Add to End of Fixture Part Number)						
Part No.	# of Wires	Length	End Fitting	Finish	Voltage*	Amps* (TL Only)
WP - Whip CS - Cordset	(Blank) 3 Wire 4 - 4 Wire 5 - 5 Wire 6 - 6 Wire	(Blank) 6 feet 8 - 8 feet 10 - 10 feet 12 - 12 feet 15 - 15 feet	(Blank) No Plug P - Standard Plug 120VAC TL - Twist Lock	BK - Black WH - White	(Blank) 120-277V 120 - 120V 277 - 277V 347 - 347V 480 - 480V	15 - 15 Amps 20 - 20 Amps

\* Required for TL options

Dimensions and specifications subject to change without notice.



Note: In order for UL safety certification to be valid, only approved lamps may be installed in the fixture and must be shipped with the fixture from the factory.