

Series BFP

LED Back Lit Flat Panel

Flat Panels have been rapidly adopted as the new standard for recessed LED lighting applications in offices, schools, hospitals, and any large hallways/corridors or spaces with T-Grid Ceilings. Saylite's new BFP Series back lit flat panels provide the same size and look of edge-lit LED panels but also offer both improved efficiency, a longer-life diffuser, and elimination of quality issues that are common with edge-lit construction. Saylite's BFP Series provides high uniformity, excellent efficiency and reduced glare for T-grid ceilings.

Available in three different wattages per size: 2x2 offered in 20 Watt, 30 Watt, and 40 Watt; 1x4 offered in 20 Watt, 30 Watt, and 40 Watt; 2x4 offered in 30 Watt, 40 Watt, and 50 Watt. 3000K, 3500K, 4000K, and 5000K options.

CONSTRUCTION

White polyester powder-coated durable aluminum housing.

CONFIGURABLE MOUNTING OPTION

Recessed mounted. Consult for surface mount and pendant mount.



DIMENSIONS

22L - 23.78"L x 23.78"W x 1.77"H

14L - 47.80"L x 11.80"W x 1.77"H

24L - 47.80"L x 23.78"W x 1.77"H

FEATURES & BENEFITS

- Same size and appearance of legacy edge-lit LED panels, but with LED back lighting instead – greater efficiency, longer life diffuser, elimination of edge-lit construction issues
- Evenly illuminate the entire surface of panel with soft, uniform light
- Provides 120 degree beam angle
- Sturdy frame prevents warping
- 2x2 and 1x4 offered in 20W, 30W and 40W; 2x4 offered in 30W, 40W and 50W
- Multiple Kelvin temperature options (3000K, 3500K, 4000K, 5000K)
- Suitable for dry or damp locations
- >50,000 hrs of L70 LED life
- External emergency battery backup
- CRI >80
- 0-10 Volt dimmable 120-277V, dim to 10%
- Power factor >0.90
- 5 year warranty



ORDER INFORMATION

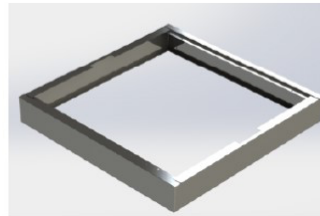
SERIES	SIZE	WATTAGE & LUMENS	DRIVER	CCT
BFP	22L 23.80"L x 23.80"W x 1.77"H	40M4400L Defaulted 40Watts / 4400 Lumens 20 Watts / 2200 Lumens, 30 Watts / 3300 Lumens, 40 Watts / 4400 Lumens options on a 3-positions switch.	DMV 0-10V Dimming Dim to 10%	MCT4 Multiple Color Temperature 3000K, 3500K, 4000K, 5000K on a 4-positions switch
	14L 47.80"L x 11.80"W x 1.77"H	40M 4400L Defaulted 40Watts / 4400 Lumens 20 Watts / 2200 Lumens, 30 Watts / 3300 Lumens, 40 Watts / 4400 Lumens options on a 3-positions switch.		
	24L 47.80"L x 23.80"W x 1.77"H	50M5500L Defaulted 50Watts / 5500 Lumens 30 Watts / 3300 Lumens, 40 Watts / 4400 Lumens, 50 Watts / 5500 Lumens options on a 3-positions switch.		

OPTIONS

EM7 7W 90mins Emergency battery backup	BFPHC14 Hanging Kit for BFP1x4 Backlit Panel 6ft Long Aircraft Cable, Set (2 pcs)
EM12 12W 90mins Emergency battery backup	BFPHC24 Hanging Kit for BFP2x2, 2x4 Backlit Panel 6ft Long Aircraft Cable, Set (2 pcs)
EM14 14W 90mins Emergency battery backup	
EM20 20W 90mins Emergency battery backup	

SURFACE MOUNT

ITEM NUMBER	DIMENSIONS
SHBFP1X4	48.0"L x 11.92"W x 4.0"H
SHBFP2x2	24.0"L x 24.0"W x 4.0"H
SHBFP2x4	48.0"L x 24.0"W x 4.0"H



Shroud for Surface Mount

PERFORMANCE DATA

	SETTING	WATTAGE (W)	3000K		3500K		4000K		5000K	
			DELIVERED LUMENS	EFFICACY (lm/W)	DELIVERED LUMENS	EFFICACY (lm/W)	DELIVERED LUMENS	EFFICACY (lm/W)	DELIVERED LUMENS	EFFICACY (lm/W)
1x4	LOW	20.00	2400.00	120.00	2400.00	120.00	2400.00	120.00	2400.00	120.00
	MED	30.00	3400.00	113.33	3400.00	113.33	3400.00	113.33	3400.00	113.33
	HIGH	40.00	4400.00	110.00	4400.00	110.00	4400.00	110.00	4400.00	110.00
2x2	LOW	20.00	2400.00	120.00	2400.00	120.00	2400.00	120.00	2400.00	120.00
	MED	30.00	3400.00	113.33	3400.00	113.33	3400.00	113.33	3400.00	113.33
	HIGH	40.00	4400.00	110.00	4400.00	110.00	4400.00	110.00	4400.00	110.00
2x4	LOW	30.00	3600.00	120.00	3600.00	120.00	3600.00	120.00	3600.00	120.00
	MED	40.00	4600.00	115.00	4600.00	115.00	4600.00	115.00	4600.00	115.00
	HIGH	50.00	5500.00	110.00	5500.00	110.00	5500.00	110.00	5500.00	110.00

+/- 10% tolerance for data

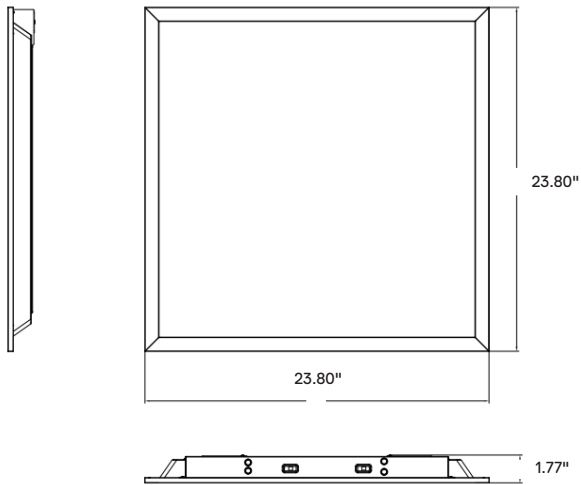
NOTE: Values shown are typical or recorded under standardized conditions at 25°C. Actual performance may vary based environment or application. Specifications are subject to change without notice. We reserve the right to change design, materials, LED's and finish in any way that will not alter installed appearance or reduce function and performance.

BACK VIEW

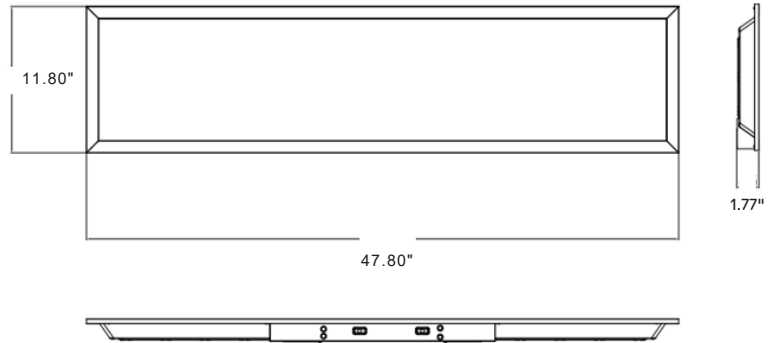


DRAWINGS & IMAGES

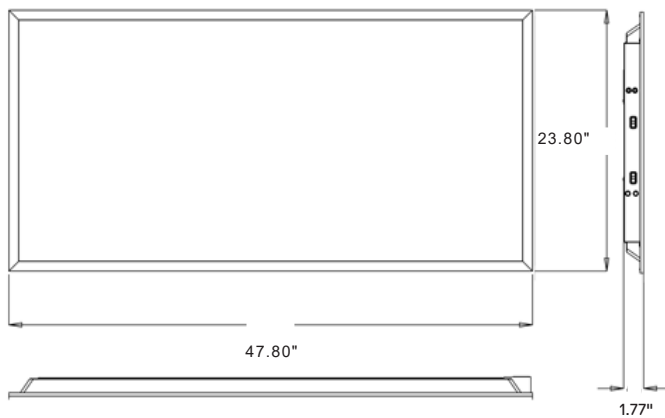
2x2



1x4



2x4



We reserve the right to change design, materials, LEDs and finish in any way that will not alter installed appearance or reduce function and performance.



CATALOG#: _____
PROJECT: _____
TYPE: _____

Series BFP
LED Back Lit Flat Panel

DLC LISTED

ITEM NUMBER

BFP22L40M4400LDMVMCT4
BFP14L40M4400LDMVMCT4
BFP24L50M5500LDMVMCT4

