



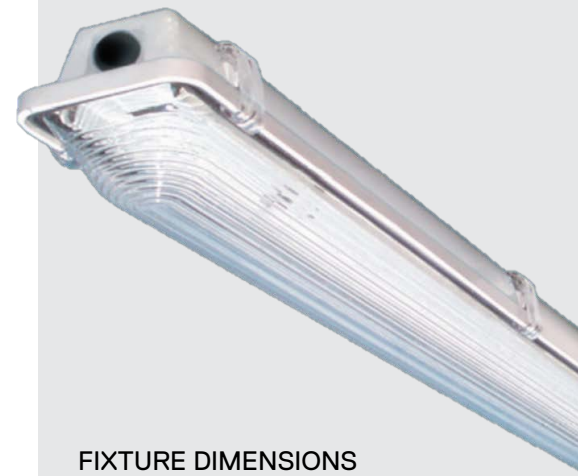
Texas Fluorescents  
Reinvented

CATALOG#: \_\_\_\_\_  
PROJECT: \_\_\_\_\_  
TYPE: \_\_\_\_\_

# CITN Series

## Narrow Harsh Environment Enclosure

CITADEL LED lighting is designed for parking garages and other applications where weatherproof wide area lighting is required. A highly engineered LED lighting system is coupled with the best weather proofing materials and design to provide the most durable lighting system in the industry. Poured in place gasket and cam latches seal the enclosures. The mounting can provide dramatic savings on installation labor. Designed around a long lasting and efficient LED array with specially designed heat sinks, reflectors and retaining clips ensure maximum LED life and wide spread lighting to put the light exactly where you want it. A specially designed driver to compliment the LED arrays housed in special enclosure to ensure effective heat dissipation and easy maintenance. Very tough diffuser resists breakage and are also specially designed to provide excellent light transmission of the LEDs while minimizing the glare from the bright LED's.



FIXTURE DIMENSIONS  
48L: 4.10"W x 51.75"L x 4.29"H

### SPECIFICATIONS

- Surface or pendant mount
- Polycarbonate enclosure
- Nylon safety straps attach the tray and retainer clips for safety and easy maintenance
- With POM or stainless steel clips available
- Lenses are injection molded with guardian seal feature
- Many lumen package / wattage options via programmable drivers
- Multiple Kelvin temperature options (3000K, 3500K, 4000K, 5000K)
- >50,000 hrs of L70 LED life
- UL Wet Location certified, meets UL 746, and UL f1 rated
- IP65, IP66, IP67 certified
- 0-10 Volt dimmable 120-277V (120V ELV/TRIAC avail)
- Power factor >0.90
- 5 year warranty



## ORDERING GUIDE

Factory at your fingertips. Fill in the blanks to create your part number or create a custom configuration.

Sample Part Number: CITP-LB-48-L-Y33-DMV-35

SERIES	LENGTH		LENS MATERIAL		DIFFUSER		GEAR	WATTAGE & LUMENS* <sup>1</sup>		DRIVER	
CITN	48	4.1"W x 48"L	Blank	Acrylic	RF	Ribbed Frosted	LY	20W	20 Watts 3,000 Lumens	DMV	1-10V Dimming 120-277VAC
			P	Polycarbonate	LB	Ribbed Clear		30W	30Watts 4,500 Lumens		
					FR	Smooth Frosted		40W	40 Watts 5,000 Lumens	G120	Triac/ELV Dimming at 120V only
					CL	Smooth Clear		47W	47 Watts 7,000 Lumens		

CCT <sup>2</sup>		EMERGENCY	ACCESSORIES
30	3000K	EM 14W Emergency Battery Backup	MDB3 Low Mount 360 Degree Bi-level Sensor with 0-10V Driver
35	3500K		MDT4 Occupancy Sensor Wide Angle
40	4000K		MDT4W Occupancy Sensor Wide Angle Wet Location
50	5000K		WP 6 ft. 3 Wire 18 gauge Whip
			WP10 6 ft. 4 Wire 18 gauge Whip
		CTVSMB Narrow Mounting Bracket (2 per housing)	
		CT2MB1LMCH Narrow Mounting Bracket for Pendant Rod (2 per housing)	
		CTENDPLUGB Endplug (comes with 1 per housing)	
		CTVSCW White POM Lens Clip	
		CT4SLC Stainless Steel Lens Clip	
		TPS Tamper Proof Screws	

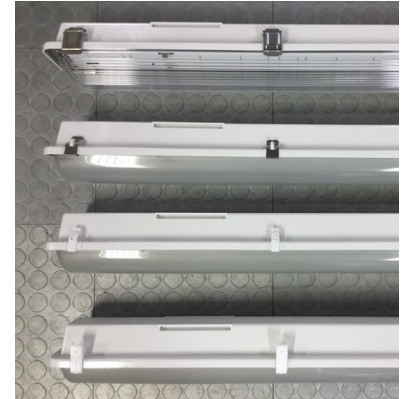
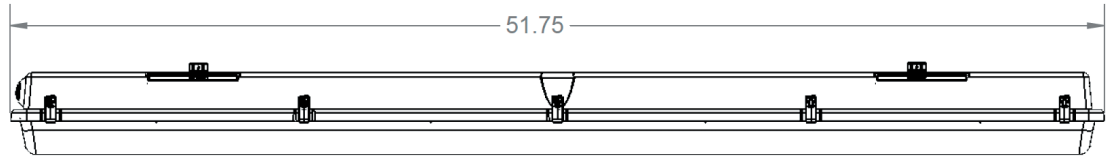
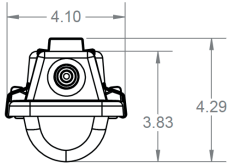
**Note:**

- Standard fixtures have 1 row of LED boards, high efficiency fixtures have 2 rows of LED boards.
- Consult factory for 90 CRI 5000K options.

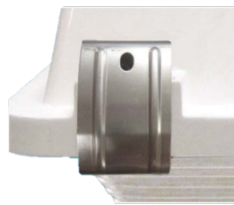
\*Programmable LED drivers allow custom configured wattages and corresponding lumens.

We reserve the right to change design, materials, LED's and finish in any way that will not alter installed appearance or reduce function and performance.

**PRODUCT DIMENSIONS**



**CTVSCW**  
White POM Lens Clip



**CT4SLC**  
Stainless Steel Lens Clip



**CT2MB1LMCH**  
Narrow Mounting Bracket for  
Pendant Rod (2 per housing)



**CTVSMB**  
Narrow Mounting Bracket  
(2 per housing)



**CTENDPLUGB**  
Endplug  
(comes with 1 per housing)