



Texas Fluorescents
Reinvented

CATALOG#: _____
PROJECT: _____
TYPE: _____

Series 209

LED Shallow Economy Wraparound

A shallow, economy designed, high efficiency, wraparound luminaire available in either two, four, or eight foot lengths. Low initial cost, maintenance free, this series also delivers excellent brightness control.

CONSTRUCTION

Completely die formed from heavy gauge cold rolled steel. Design embossed ends are secured to the housing. Wireway cover snaps on or off without tools.

DIFFUSERS

A crystal clear prismatic or frosted diffuser extruded from 100% virgin acrylic that will maintain its color under normal conditions, indefinitely. Linear prisms on the interior side walls direct the light ceilingwards, which can then refract back down, The bottom is composed of an evenly spaced pattern of conical prisms yielding glare free diffused light. Diffuser is lift and shift for ease of install and cleaning and can remain attached, hanging down from either side of the housing for simple two hand maintenance.

MOUNTING

Suitable for individual or continuous run installations. May be surface or pendant mounted.

TYPICAL OPTIONS & ACCESSORIES

Emergency battery backup and whips.



DIMENSIONS

- 2ft. - 9.375"W x 24"L x 3.1"Dp
- 4ft. - 9.375"W x 48"L x 3.1"Dp
- 8ft. - 9.375"W x 96"L x 3.1"Dp

FEATURES & BENEFITS

- Available clear prismatic acrylic lens or frosted lens
- Delivers all around illumination
- Available in 2ft, 4ft, and 8ft.
- Ideal for kitchen, laundry rooms, garage or office
- Rated for dry and damp locations
- CRI >80 (Consult for 90 CRI options)
- >50,000 hrs of L70 LED life
- 0-10 Volt dimmable 120-277V (120 ELV/Triac avail)
- Power factor >0.90
- 5 year warranty



Intertek

REV 11/15/2022



Texas Fluorescents
Reinvented

CATALOG#: _____
PROJECT: _____
TYPE: _____

Series 209

LED Shallow Economy Wraparound

ORDER INFORMATION

Factory at your fingertips. Fill in the blanks to create your part number or create a custom configuration.

SERIES	LENS MATERIAL	LENGTH	WATTAGE & LUMENS*		DRIVER	CCT/CRI					
209	A Prismatic Acrylic #12 Pattern	24L 24"	Y15W	15 Watts, 1950 Lumens	DMV 0-10V Dimming	30K	3000K				
			Y20W	20 Watts, 2600 Lumens			80 CRI				
			Y25W	25 Watts, 3250 Lumens			G120** ELV/Triac Dimming at 120V only	35K	3500K		
			Y33W	33 Watts, 4290 Lumens					80 CRI		
			FR Frosted Prismatic Acrylic #12 Pattern	48L 48"			Y15W	15 Watts, 1950 Lumens	D1MV 0-10V Dimming (dim to 1%)	40K	4000K
							Y20W	20 Watts, 2600 Lumens			80 CRI
	Y25W	25 Watts, 3250 Lumens			50K	5000K					
	Y30W	30 Watts, 3900 Lumens				80 CRI					
	Y35W	35 Watts, 4550 Lumens				80 CRI					
	Y40W	40 Watts, 5200 Lumens				80 CRI					
	Y45W	45 Watts, 5850 Lumens				80 CRI					
	Y48W5700L	48 Watts, 5700 Lumens				80 CRI					
	Y50W	50 Watts, 6500 Lumens				80 CRI					
	Y54W	54 Watts, 7020 Lumens				80 CRI					
	Y57W6700L	57 Watts, 6700 Lumens				80 CRI					
	96L 96"	Y30W				30 Watts, 3900 Lumens					
		Y40W	40 Watts, 5200 Lumens								
		Y50W	50 Watts, 6500 Lumens								
		Y60W	60 Watts, 7800 Lumens								
		Y70W	70 Watts, 9100 Lumens								
		Y80W	80 Watts, 10400 Lumens								
			Y90W	90 Watts, 11700 Lumens							
			Y100W	100 Watts, 13000 Lumens							
			Y108W	108 Watts, 14040 Lumens							

OPTIONS	
WP	6ft. 3 wire 18 gauge whip
WP4	6ft. 4 wire 18 gauge whip (non dimming EM)
WP5W	6ft. 5 wire 18 gauge whip
WP6W	6ft. 6 wire 18 gauge whip (dimming EM)
EM14***	14W emergency battery backup (4ft + 8ft only)
MDT4	On/Off external mount sensor
MDD4	Daylight/Dimming external mount sensor
MDB4	Bi-level external mount sensor
HC101	Chain kit w/20ft chain and (6) S Hooks
HC204	Chain kit w/(2) 10' chain and (2) Tong hangers
SCS24WH	(1) Stem white kit w/(1) 24" stem, 1 canopy, and mntg hardware for 4ft fixture
2SCS24WH	(2) Stems white kit w/(2) 24" stems, (2) canopies, and mntg hardware for 4ft fixture

Note:

1. Consult factory for 90 CRI options and availability.

*Programmable LED drivers allow custom configured wattages and corresponding lumens.

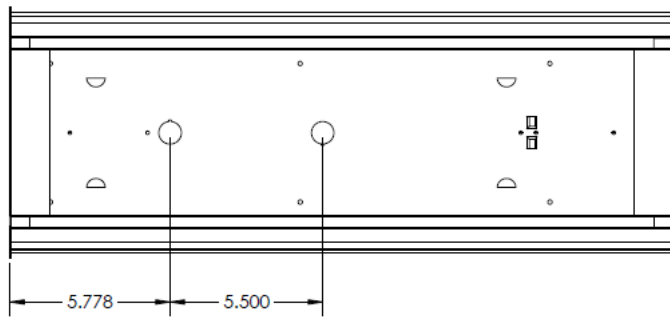
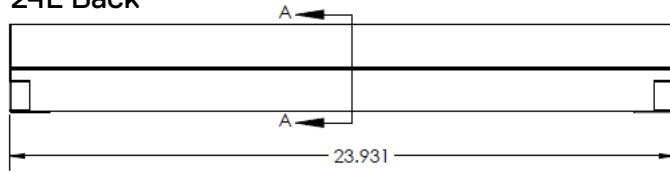
**Consult for availability with select wattage packages.

***Consult for use in conjunction with G120 driver

NOTE: Values shown are typical or recorded under standardized conditions at 25°C. Actual performance may vary based environment or application. Specifications are subject to change without notice. We reserve the right to change design, materials, LED's and finish in any way that will not alter installed appearance or reduce function and performance.

DRAWINGS & IMAGES

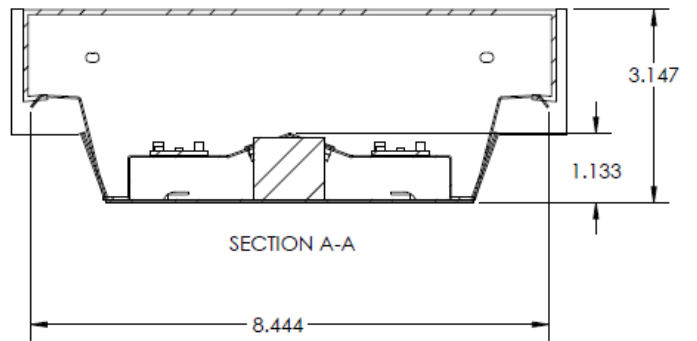
24L Back



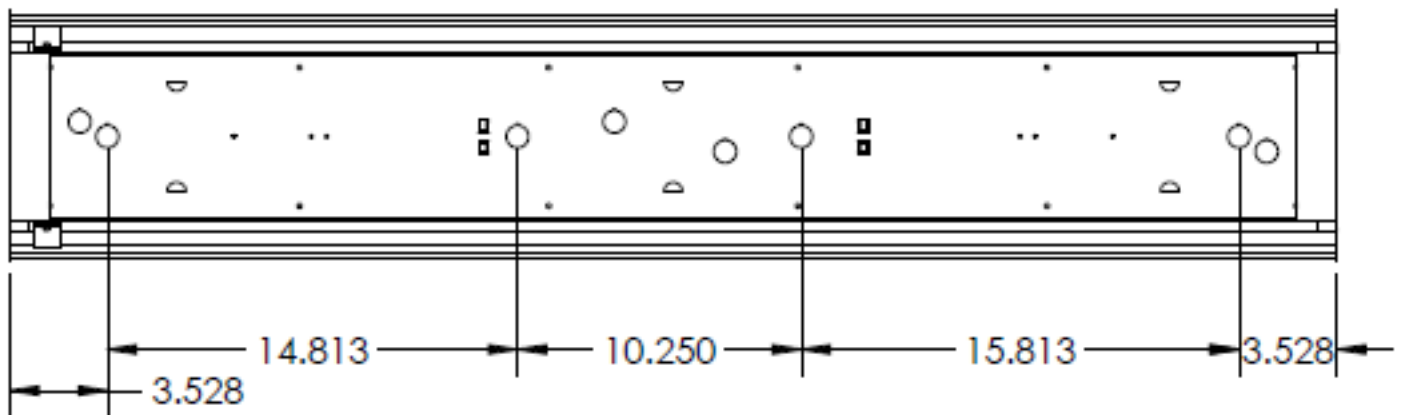
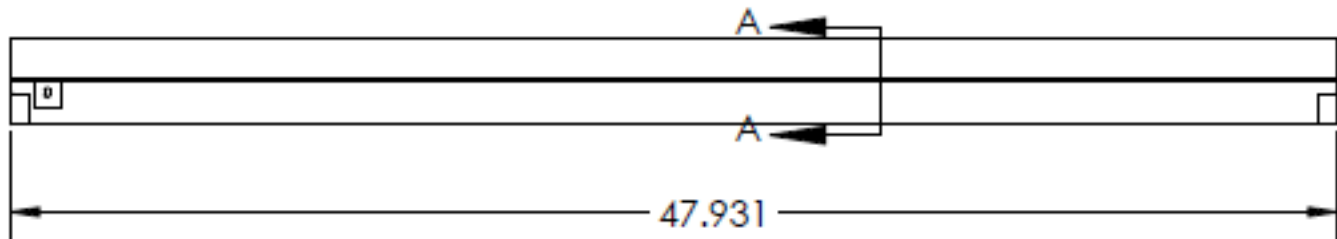
Replacement Lens Ordering Information

Series	Description
0209A24L	Replacement acrylic lens for 24L
0209A48L	Replacement acrylic lens for 48L
0209FR24L	Replacement frosted lens for 24L
0209FR48L	Replacement frosted lens for 48L

End

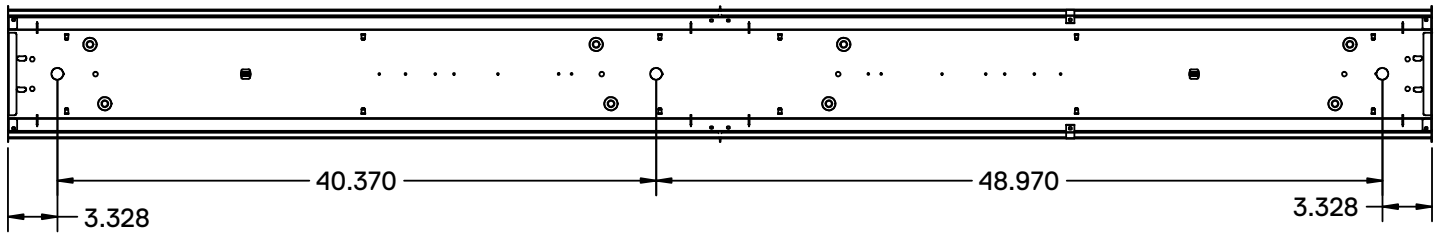
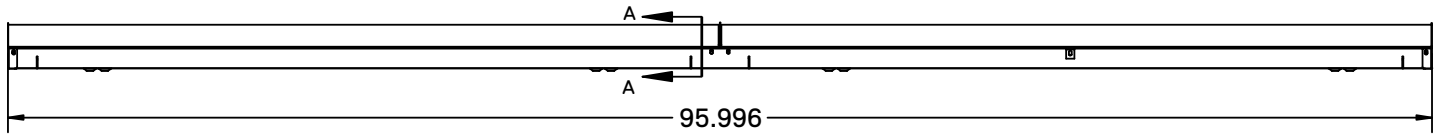


48L Back

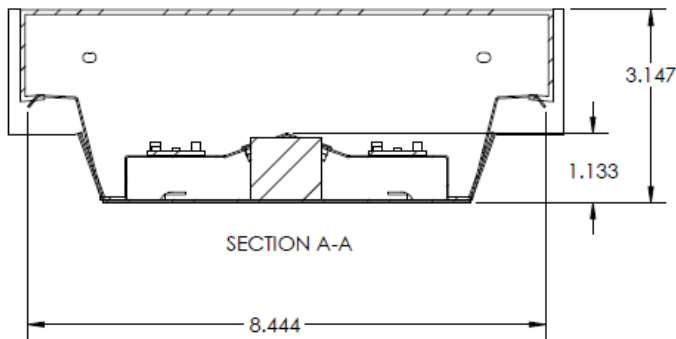


DRAWINGS & IMAGES

96L Back

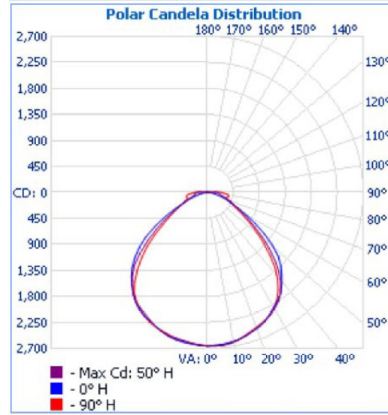
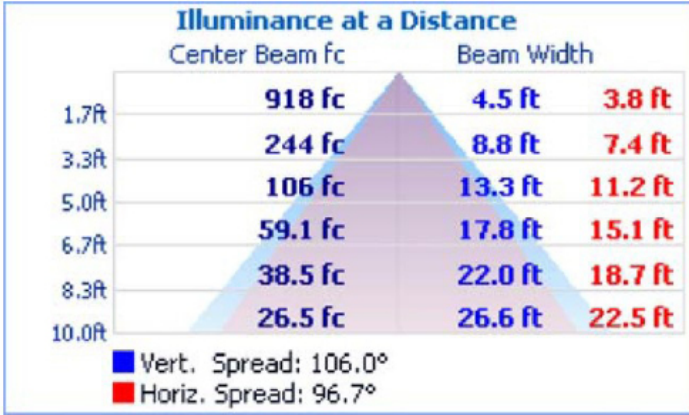


End



PHOTOMETRIC

209FR48LF57W670LDMV40K



Zonal Lumen Summary

Zone	Lumens	% Luminaire
0-30	2,090.0	31.1%
0-40	3,445.0	51.3%
0-60	5,676.5	84.6%
60-90	981.8	14.6%
70-100	528.0	7.9%
90-120	54.6	0.8%
0-90	6,658.3	99.2%
90-180	54.6	0.8%
0-180	6,712.9	100%

DLC LISTED



Item Number - 2ft	Item Number - 4ft	Item Number - 8ft
209A24LY15WDMV30K0000	209A48LY15WDMV30K0000	209A96LY100WDMV30K0000
209A24LY15WDMV35K0000	209A48LY15WDMV35K0000	209A96LY100WDMV35K0000
209A24LY15WDMV40K0000	209A48LY15WDMV40K0000	209A96LY100WDMV40K0000
209A24LY15WDMV50K0000	209A48LY15WDMV50K0000	209A96LY100WDMV50K0000
209A24LY20WDMV30K0000	209A48LY20WDMV30K0000	209A96LY108WDMV30K0000
209A24LY20WDMV35K0000	209A48LY20WDMV35K0000	209A96LY108WDMV35K0000
209A24LY20WDMV40K0000	209A48LY20WDMV40K0000	209A96LY108WDMV40K0000
209A24LY20WDMV50K0000	209A48LY20WDMV50K0000	209A96LY108WDMV50K0000
209A24LY25WDMV30K0000	209A48LY25WDMV30K0000	209A96LY30WDMV30K0000
209A24LY25WDMV35K0000	209A48LY25WDMV35K0000	209A96LY30WDMV35K0000
209A24LY25WDMV40K0000	209A48LY25WDMV40K0000	209A96LY30WDMV40K0000
209A24LY25WDMV50K0000	209A48LY25WDMV50K0000	209A96LY30WDMV50K0000
209A24LY33WDMV30K0000	209A48LY30WDMV30K0000	209A96LY40WDMV30K0000
209A24LY33WDMV35K0000	209A48LY30WDMV35K0000	209A96LY40WDMV35K0000
209A24LY33WDMV40K0000	209A48LY30WDMV40K0000	209A96LY40WDMV40K0000
209A24LY33WDMV50K0000	209A48LY30WDMV50K0000	209A96LY40WDMV50K0000
	209A48LY35WDMV30K0000	209A96LY50WDMV30K0000
	209A48LY35WDMV35K0000	209A96LY50WDMV35K0000
	209A48LY35WDMV40K0000	209A96LY50WDMV40K0000
	209A48LY35WDMV50K0000	209A96LY50WDMV50K0000
	209A48LY40WDMV30K0000	209A96LY60WDMV30K0000
	209A48LY40WDMV35K0000	209A96LY60WDMV35K0000
	209A48LY40WDMV40K0000	209A96LY60WDMV40K0000
	209A48LY40WDMV50K0000	209A96LY60WDMV50K0000
	209A48LY45WDMV30K0000	209A96LY70WDMV30K0000
	209A48LY45WDMV35K0000	209A96LY70WDMV35K0000
	209A48LY45WDMV40K0000	209A96LY70WDMV40K0000
	209A48LY45WDMV50K0000	209A96LY70WDMV50K0000
	209A48LY50WDMV30K0000	209A96LY80WDMV30K0000
	209A48LY50WDMV35K0000	209A96LY80WDMV35K0000
	209A48LY50WDMV40K0000	209A96LY80WDMV40K0000
	209A48LY50WDMV50K0000	209A96LY80WDMV50K0000
	209A48LY54WDMV30K0000	209A96LY90WDMV30K0000
	209A48LY54WDMV35K0000	209A96LY90WDMV35K0000
	209A48LY54WDMV40K0000	209A96LY90WDMV40K0000
	209A48LY54WDMV50K0000	209A96LY90WDMV50K0000