



CATALOG#: _____
PROJECT: _____
TYPE: _____

Series LAB

Light Acoustic Baffle

Introducing the Light Acoustic Baffle (LAB) Series which integrates lighting and an acoustic solution into one customizable product. The sound-absorbing acoustic material helps to create a beautiful highly-functional baffled ceiling installation. It can be combined with unlit baffles, or it can be used as a stand-alone acoustic fixture. Direct or indirect configuration and "direct and indirect" option. Multiple colors are available for a dynamic look.

Available in 2ft increments up to 8ft in length and various heights from 12" to 24". For more lighting information please see the L23 Series.

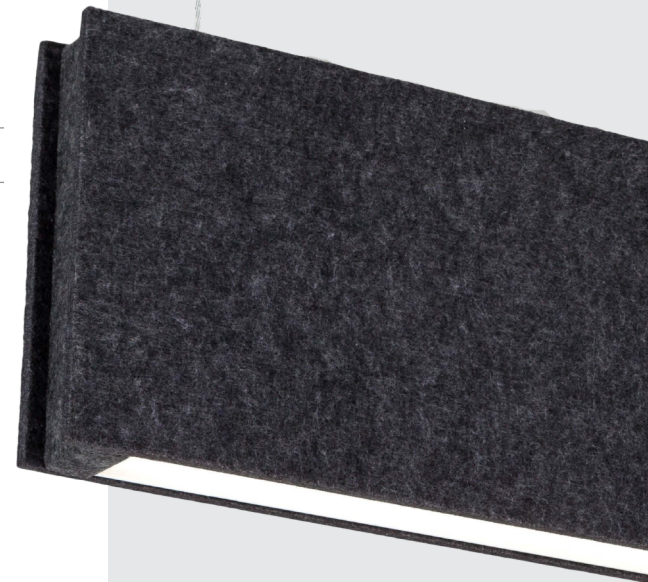
CONSTRUCTION

The acoustic material is 100% polyester containing at least 40% recycled plastic bottles(PET). Class B fire-rated and moisture-resistant with Class A fire rating option available.

Noise Reduction Coefficient (NRC) of average 0.9. Fixture housing is welded 22-gauge cold rolled steel. Knockouts on ends allow continuous wireway mounting.

MOUNTING

Surface mount with 3/4" EMT conduit clip or aircraft snap-in clip, T-bar ceiling with cady clip, or pendant mount with aircraft cable kit options from 6' to 20' long.



DIMENSIONS

24L - 25.20"L x 3"W x (12"/16"/24")H
48L - 47.28"L x 3"W x (12"/16"/24")H
72L - 69.41"L x 3"W x (12"/16"/24")H
96L - 91.93"L x 3"W x (12"/16"/24")H
Consult factory for other height options.

FEATURES & BENEFITS

- Narrow sound-absorbing material
- 2ft. increments up to 8ft. length
- Various heights from 12" to 24"
- Functional as stand-alone light fixture or as part of matching acoustic baffle
- Mix and match with acoustic baffle in different colors to create a dynamic look
- Snap-in frosted acrylic lens (85% transmission) special for LEDs
- Noise reduction coefficient (NRC) option
- Easy installation
- Suitable for dry and damp locations
- Multiple lumen packages / wattages and Kelvin temperature options
- >50,000 hrs of L70 LED life
- CRI >80 (90 CRI avail.)
- 0-10 Volt dimming 120-277V (120V ELV/TRIAC avail.)
- Power factor >0.90
- 5 year warranty



ORDER INFORMATION - DIRECT (DOWN LIGHT) OR INDIRECT (UP LIGHT)

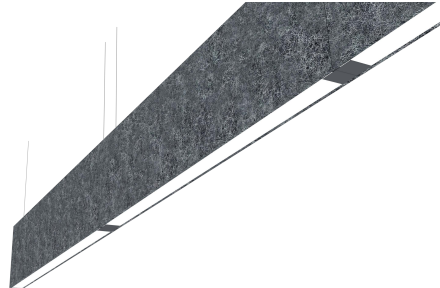
Factory at your fingertips. Fill in the blanks to create your part number or create a custom configuration.

SERIES	LENGTH	HEIGHT	DIRECT/INDIRECT	WATTAGE* & LUMENS*	DRIVER	COLOR TEMP
LAB Light Acoustical Baffle	24L 25.20"	12H 12.00"	Blank Down Light	J13W1300L 11 Watts 1250 Lumens	DMV 0-10V Dimming G120 TRIAC or ELV dimming at 120V only	30K 3000K 80 CRI
		16H 16.00"	U Up Light	J23W2300L 22 Watts 2300 Lumens		35K 3500K 80 CRI
	48L 47.28"	24H 24.00" Consult for other height options.	J26W2600L 26 Watts 2600 Lumens	40K 4000K 80 CRI		
			J45W4500L 45 Watts 4500 Lumens	50K 5000K 80 CRI		
			J39W3900L 39 Watts 3900 Lumens	930K 3000K 90 CRI		
	72L 69.41"	J68W6800L 68 Watts 6800 Lumens	935K 3500K 90 CRI			
96L 91.93"	J52W5200L 52 Watts 5200 Lumens	940K 4000K 90 CRI				
			J90W9000L 90 Watts 9000 Lumens			

For baffle only, skip these four sections

COLOR	MATERIAL CLASS	OPTIONS
07 White	Blank Class B	HC605WH Cable kit with 6' cable & 5-wire power feed/cable incl., clear cord and white canopy (included power feed and non-power feed)
10 Black	A Class A	HC605WHNPF Cable kit with 6' cable & white canopy, non-power feed (non-power feed only)
03 Light Gray		HC612WH Cable kit with 12' cable & 5-wire power feed/cable incl., clear cord and white canopy (included power feed and non-power feed)
34 Pure Gray		HC612WHNPF Cable kit with 12' cable & white canopy, non-power feed (non-power feed only)
		LABMJWH Non Power Mechanical Joiner (each fixture in a run will require power feed and non power feed hang kits)

See ACOUSTIC MATERIAL COLOR OPTIONS on page 5 for different color.



Note:

*Programmable LED drivers allow custom configured wattages and corresponding lumens.

** CRI 90 is not available in 5000K.

We reserve the right to change design, materials, LEDs and finish in any way that will not alter installed appearance or reduce function and performance.

ORDER INFORMATION - DIRECT (DOWN LIGHT) AND INDIRECT (UP LIGHT)

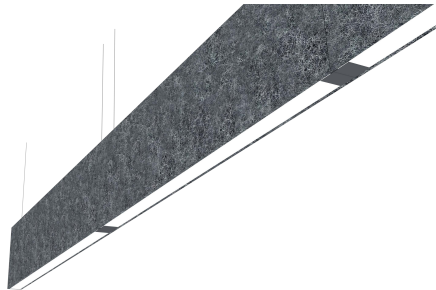
Factory at your fingertips. Fill in the blanks to create your part number or create a custom configuration.

SERIES	LENGTH	HEIGHT	WATTAGE* & LUMENS*		DRIVER	COLOR	TEMP**	
LAB Light Acoustical Baffle	24L 25.20"	12H 12.00"	Up and Down	UT6WDJ12W	Uplight 6 Watts Downlight 12 Watts 1800 Lumens	DMV	0-10V Dimming	30K 3000K 80 CRI
		16H 16.00"		UT9WDJ18W	Uplight 9 Watts Downlight 18 Watts 2700 Lumens	G120	TRIAC or ELV dimming at 120V only	35K 3500K 80 CRI
	48L 47.28"	24H 24.00"		UT12WDJ24W	Uplight 12 Watts Downlight 24 Watts 3600 Lumens			40K 4000K 80 CRI
		Consult for other height options.		UT18WDJ36W	Uplight 18 Watts Downlight 36 Watts 5400 Lumens			50K 5000K 80 CRI
	72L 69.41"			UT18WDJ36W	Uplight 18 Watts Downlight 36 Watts 5400 Lumens			930K 3000K 90 CRI
				UT27WDJ54W	Uplight 27 Watts Downlight 54 Watts 8100 Lumens			935K 3500K 90 CRI
96L 91.93"		UT24WDJ48W	Uplight 24 Watts Downlight 48 Watts 7200 Lumens			940K 4000K 90 CRI		
			UT36WDJ72W	Uplight 36 Watts Downlight 72 Watts 10800 Lumens				

For baffle only, skip these four sections

COLOR	MATERIAL CLASS	OPTIONS	
07 White	Blank Class B A Class A	HC605WH	Cable kit with 6' cable & 5-wire power feed/cable incl., clear cord and white canopy (included power feed and non-power feed)
10 Black		HC605WHNPF	Cable kit with 6' cable & white canopy, non-power feed (non-power feed only)
03 Light Gray		HC612WH	Cable kit with 12' cable & 5-wire power feed/cable incl., clear cord and white canopy (included power feed and non-power feed)
34 Pure Gray		HC612WHNPF	Cable kit with 12' cable & white canopy, non-power feed (non-power feed only)
		LABMJWH	Non Power Mechanical Joiner (each fixture in a run will require power feed and non power feed hang kits)

See ACOUSTIC MATERIAL COLOR OPTIONS on page 5 for different color.



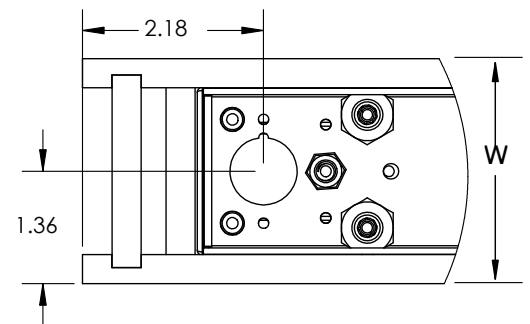
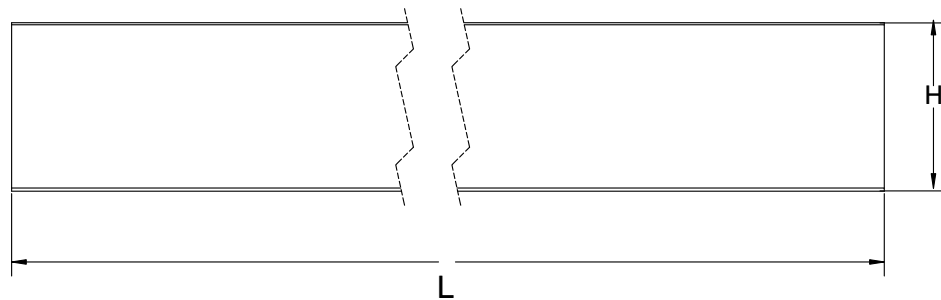
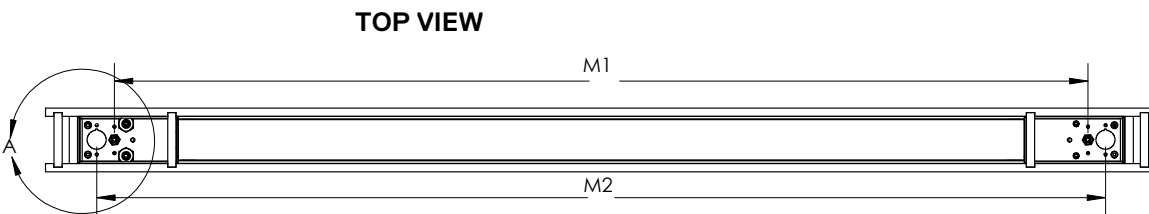
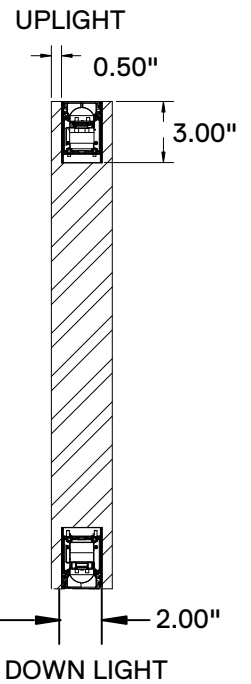
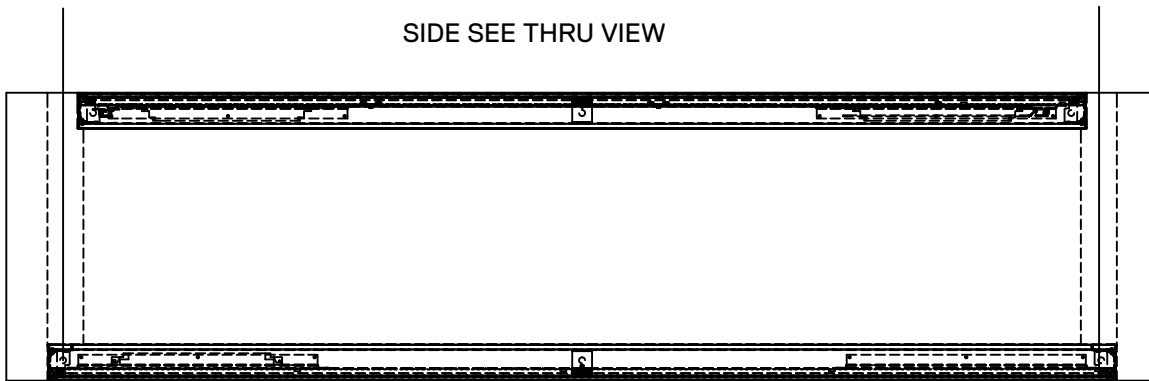
Note:

*Programmable LED drivers allow custom configured wattages and corresponding lumens.

** CRI 90 is not available in 5000K.

We reserve the right to change design, materials, LEDs and finish in any way that will not alter installed appearance or reduce function and performance.

DRAWINGS & IMAGES - direct and indirect



DETAIL A

PART	L	W	H	M1	M2
L23P24L	25.20"	3.00"	12",16",24"	19.32"	20.82"
L23P48L	47.28"	3.00"	12",16",24"	41.42"	42.92"
L23P72L	69.41"	3.00"	12",16",24"	63.55"	65.05"
L23P96L	91.93"	3.00"	12",16",24"	86.05"	87.55"

L-Length
 W-Width
 H-Height
 D-Distance from end to light source
 M1-Hanging Kit Distance (HC605)
 M2-Power Knockout Distance

ACOUSTIC MATERIAL COLOR OPTIONS

Consult factory for different color options.

