



Texas Fluorescents
Reinvented

CATALOG#: _____
PROJECT: _____
TYPE: _____

Series SKD

Low Profile LED Strip

Full body micro silhouette makes a bold statement with a minimal design in brushed nickel powder coated finish (consult factory for other finishes). Scaled to the LED module the matte white diffuser surrounds the LEDs for soft lighting. Brushed nickel fixture can be surface mounted on wall or ceiling or pendant mounted with specially engineering cable mounting kit.

CONSTRUCTION

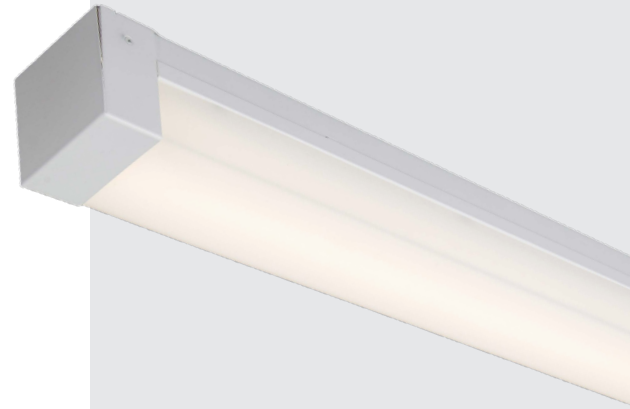
Housing is die-formed and embossed code 22 gauge steel. Finish is high reflectance baked white enamel. Wiring knockouts are provided on back and end of housing. No knock-outs on sides or ends

MOUNTING

Surface mount, pendant mount, horizontal or vertical.

TYPICAL OPTIONS & ACCESSORIES

Whips, wire guards, external emergency battery backup (IOTA ILB-CP10). Contact factory for more details.



DIMENSIONS

2"W Housing

24"L x 2"W x 2.65"H

46"L x 2"W x 2.65"H

92"L x 2"W x 2.65"H

3" Wide Housing (WB)

24"L x 3"W x 2.65"H

46"L x 3"W x 2.65"H

92"L x 3"W x 2.65"H

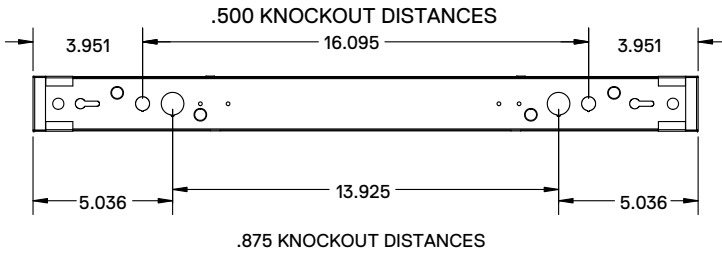
FEATURES & BENEFITS

- Clean body - No knock-outs on sides or ends.
- Knock-outs on back accept standard electrical fittings.
- Available with smooth frosted lens.
- Consult for custom finish options
- Suitable for dry and damp locations
- 50,000 hrs of L70 LED life
- CRI >80
- 0-10 Volts dimmable 120-277V
- Power factor 0.99
- 5 year warranty

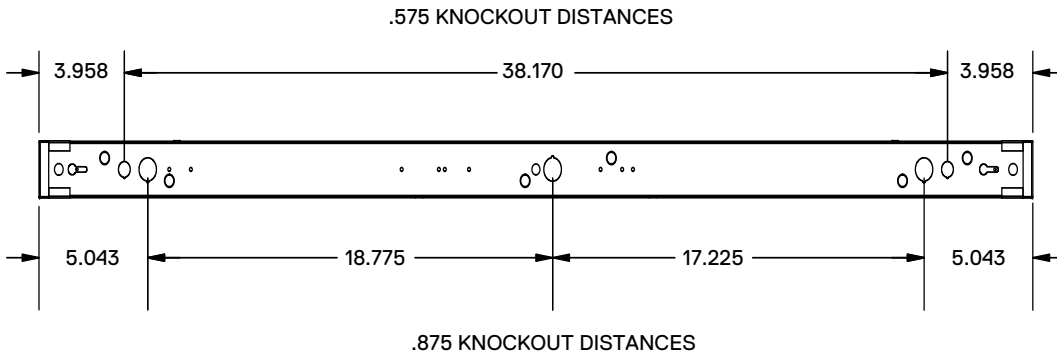


DRAWINGS & IMAGES

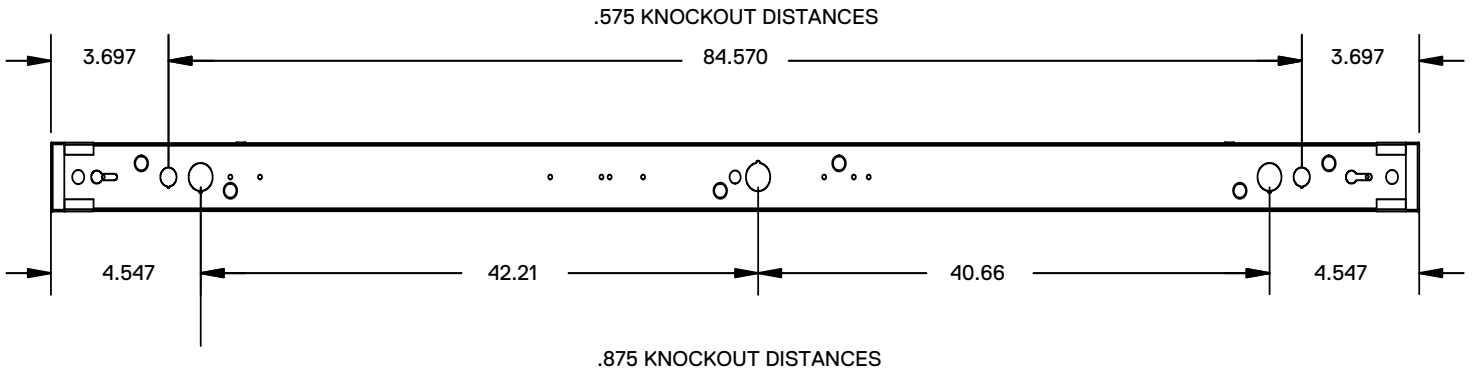
2ft



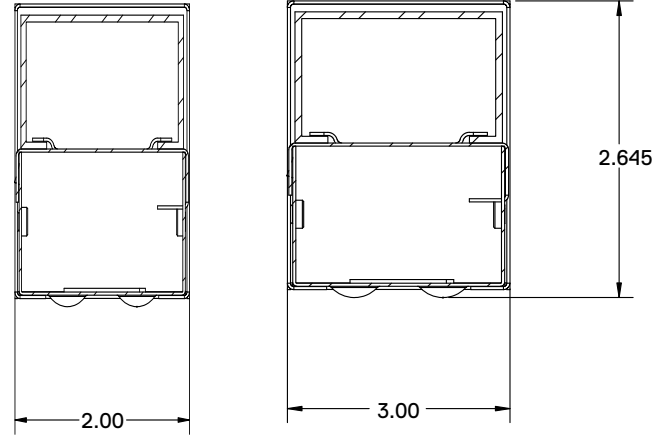
4ft



8ft



End View



2" Wide Body

3" Wide Body

ORDERING GUIDE

SENSOR	SERIES	LENS MATERIAL	LENGTH	WATTAGE & LUMENS		DRIVER	CCT		FINISH	
SD** Daylight Harvesting	SKD 2" Wide Housing	FR Frosted	24L 24"	J12W1200L	12 Watts 1200 Lumens	DMV 0-10V dimming	30K 3000K 35K 3500K 40K 4000K 50K 5000K	WH Matte White	BK Black	SL Silver
				J18W1800L	18 Watts 1800 Lumens					
SM** Microwave Sensor			48L 48"	J28W2800L	28 Watts 2800 Lumens	DMV(xx) 0-10V Dimming (XX for the percentage of light output when it is not occupied)				
				J35W3400L	35 Watts 3400 Lumens					
SS** On/Off Sensor			96L 96"	J57W5400L	57 Watts 5400 Lumens					
				J72W7000L	72 Watts 7000 Lumens					
SV** Bi Level (xx) Sensor										

OPTIONS	
WP	6ft. 3 wire 18 gauge whip
WP10	6ft. 4 wire 18 gauge whip
EM	10W Emergency battery backup
PI1	3 wire harness
PI3	5 wire harness

*Programmable LED drivers allow custom configured wattages and corresponding lumens.

** Sensor options do not apply in 2' housing

NOTE: Values shown are typical or recorded under standardized conditions at 25°C. Actual performance may vary based environment or application. Specifications are subject to change without notice. We reserve the right to change design, materials, LED's and finish in any way that will not alter installed appearance or reduce function and performance.

ORDERING GUIDE

SENSOR	SERIES	LENS MATERIAL	LENGTH	WATTAGE & LUMENS		DRIVER		CCT		FINISH	
SD** Daylight Harvesting	SKDWB 3" Wide Housing	FR Frosted	24L	24"	J35W3400L	35 Watts 3400 Lumens	DMV 0-10V dimming	30K 35K 40K 50K	3000K 3500K 4000K 5000K	WH	Matte White
			48L	48"	J40W4000L	40 Watts 4000 Lumens				BK	Black
			96L	96"	J80W8000L Z114W10800L	80 Watts 8000 Lumens 114 Watts 10800 Lumens				SL	Silver
SM** Microwave Sensor						DMV(xx) 0-10V Dimming (XX for the percentage of light output when it is not occupied)					
SS** On/Off Sensor											
SV** Bi Level (xx) Sensor											

OPTIONS	
WP	6ft. 3 wire 18 gauge whip
WP10	6ft. 4 wire 18 gauge whip
EM	10W Emergency battery backup
PI1	3 wire harness
PI3	5 wire harness

*Programmable LED drivers allow custom configured wattages and corresponding lumens.

** Sensor options do not apply in 2' housing

NOTE: Values shown are typical or recorded under standardized conditions at 25°C. Actual performance may vary based environment or application. Specifications are subject to change without notice. We reserve the right to change design, materials, LED's and finish in any way that will not alter installed appearance or reduce function and performance.