



Texas Fluorescents
Reinvented

CATALOG#: _____
PROJECT: _____
TYPE: _____

Series HB131

High Bay LED Troffer

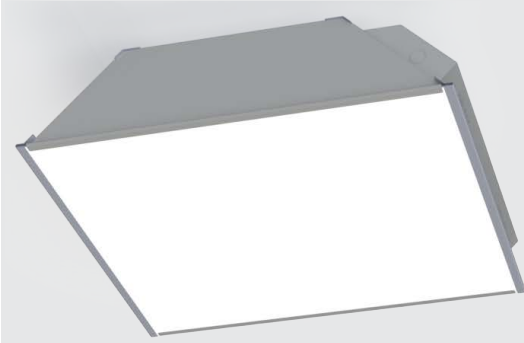
The Series HB131 fixture offers high light output complemented by a sleek, seamless design. There are two size configurations and multiple Kelvin temperature options available. These fixtures are durable, energy efficient, and provide great illumination for general lighting applications. The Series HB131 is ideal for commercial and industrial buildings, and is rated for damp and dry locations.

CONSTRUCTION

Housing is die-formed and embossed from 18 gauge high grade aluminum. A vented driver cover box on the back side of the fixture allows easy access to wiring and electronics.

OPTIONS

Emergency battery backup in 10W, 12W and 20W options.



DIMENSIONS

2X2: 23.875"L x 23.875"W x 5.575"H
2X4: 47.875"L x 23.875"W x 5.575"H

SPECIFICATIONS

- 2 standard sizes – 2ft x 2ft, 2ft x 4ft
- Recessed mount for grid ceiling
- **Not IC Rated** (not rated for direct contact with ceiling insulation)
- Many lumen package / wattage options via programmable drivers
- Multiple Kelvin temperature options (3000K, 3500K, 4000K, 5000K)
- Emergency battery backup options available
- CRI >80 (90 CRI available)
- >50,000 hrs of L70 LED life
- Rated for dry and damp locations
- 0-10 Volt dimmable 120-277V (120V ELV/TRIAC avail)
- Power factor >0.90
- 5 year warranty



ORDERING GUIDE

Factory at your fingertips. Fill in the blanks to create your part number or create a custom configuration.

Sample Part Number: HB131-FR-24X24-LB-200W-DMV-40K-EM14-WG

SERIES	DIFFUSER		WIDTH X LENGTH		GEAR	WATTAGE*1		DRIVER		CCT	
	FR	Frosted	24X24	23.875"W x 23.875"L		LB	80W	80 Watts 11400 Lumens	DMV	0-10V Dimming	30K
HB131	FR	Frosted	24X24	23.875"W x 23.875"L	LB	100W	100 Watts 14250 Lumens	G120	Triac/ELV Dimming at 120V only	35K	3500K
						142W	142 Watts 20200 Lumens			40K	4000K
						168W	168 Watts 26000 Lumens			50K	5000K
						168W	168 Watts 25000 Lumens				
			24X48	23.875"W x 47.875"L		190W	190 Watts 29000 Lumens	D1MV	0-10V Dimming (dim to 1%)		
						238W	238 Watts 36000 Lumens				
						300W	300 Watts 42750 Lumens				

OPTIONS			
EMERGENCY		WIRE GUARD	
EM14	14W Emergency battery backup	WG	Wire Guard
EM20	20W Emergency battery backup (remote only)		

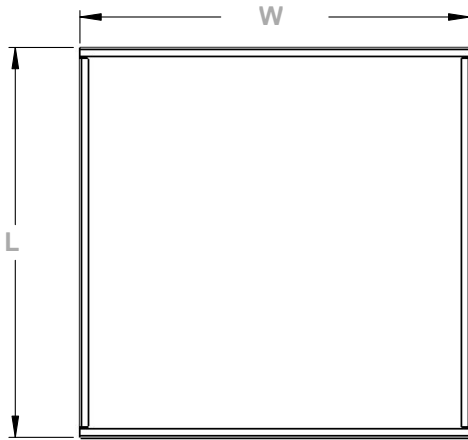
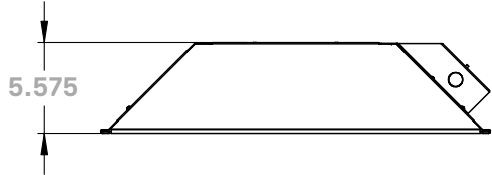
Note:

1. Board level lumen.

*Programmable LED drivers allow custom configured wattages and corresponding lumens.

We reserve the right to change design, materials, LED's and finish in any way that will not alter installed appearance or reduce function and performance.

PRODUCT DIMENSIONS



Sample Part Number	W	L
HB131FR24X24LBD105DMVWH30K	23.875 in.	23.875 in.
HB131FR24X48LBD210DMVWH30K	23.875 in.	47.875 in.