

Series 153

LED Surface Mounted Troffer

Specification grade, low profile surface mount provides for an almost limitless range of applications in areas where surface modulars (no grid) are required. The shrouded troffer is an economical alternative to the 153 series. It is Ideal for all commercial and industrial buildings.

CONSTRUCTION

Housing is die-formed and embossed code 22 gauge steel. Finish is high reflectance baked white enamel. Wiring knockouts are provided on back of housing. Gear tray or reflector snaps into place; no tools required for driver. Lens is held with a hinged steel door frame; frame hinges downward on either side and is held closed by two positive cam latches. Premium, full specular reflectors are available as an option to increase efficiency or modify lighting distribution.

TYPICAL OPTIONS & ACCESSORIES

Emergency battery backup, cord sets, whips, wire guards.
Contact factory for additional options.

LED ENGINE

Programmable driver changes LED array output to provide different outputs



DIMENSIONS

2x2 - 23.75"W x 24.0"L x 3.75"Dp
1x4 - 11.75"W x 48.0"L x 3.75"Dp
2x4 - 23.75"W x 48.0"L x 3.75"Dp

FEATURES & BENEFITS

- Post painted powder coat finish
- Shallow, low profile design. No external fasteners.
- Clear 0.10 thick acrylic lens is standard; many options available.
- Direct surface mount
- Fully enclosed spring loaded cam latches allow years of hassle free maintenance.
- Heavy gauge welded end plates and housing ensure durable, rigid construction.
- Fully gasketed door minimizes contaminants.
- ARRA Compliant
- Rated for dry and damp locations
- >50,000 hrs of L70 LED life
- CRI >80
- 0-10 Volt dimmable 120-277V
- Power Factor >0.90
- 5 year warranty.



PRODUCT NUMBERS

Factory at your fingertips. Fill in the blanks to create your part number or create a custom configuration.

SERIES	LENS MATERIAL		LENGTH	WATTAGE & LUMENS		DRIVER		CRI/CCT				
153	A	Prismatic Acrylic #12 Pattern	22L	2x2	Y20W2700L	20 Watts 2700 Lumens	DMV	0-10V Dimming	30K	3000K 80 CRI		
	A125	Prismatic Acrylic #12 Pattern 1/8"			Y25W3300L	25 Watts 3300 Lumens			G120	Triac/ELV Dimming at 120V only	35K	3500K 80 CRI
	MW	Matte White Acrylic			Y33W4250L	33 Watts 4250 Lumens					40K	4000K 80 CRI
			14L	1x4	Y30W4350L	30 Watts 4350 Lumens	D1MV	0-10V Dimming (dim to 1%)	50K	5000K 80 CRI		
					Y45W6100L	45 Watts 6100 Lumens			930K	3000K 90 CRI		
					Y45W6750L	45 Watts 6750 Lumens			935K	3500K 90 CRI		
			24L	2x4	Y30W4750L	30 Watts 4750 Lumens			940K	4000K 90 CRI		
					Y45W6750L	45 Watts 6750 Lumens			950K	5000K 90 CRI		
					Y54W7700L	54 Watts 7700 Lumens						

OPTIONS			
WP	6 ft. 3 wire 18 gauge whip	EM14	14W Emergency battery backup
WP4	6 ft. 4 wire 18 gauge whip (non dimming EM)		
WP5W	6 ft. 5 wire 18 gauge whip	EM20	20W Emergency battery backup (remote only)
WP6W	6 ft. 6 wire 18 gauge whip (dimming EM)		

Note:

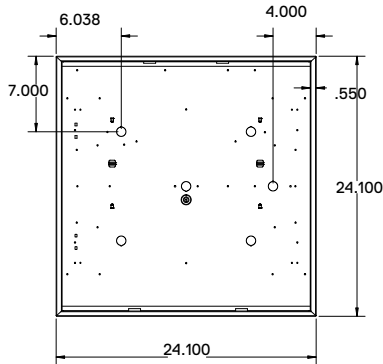
*Programmable LED drivers allow custom configured wattages and corresponding lumens.

We reserve the right to change design, materials, LEDs and finish in any way that will not alter installed appearance or reduce function and performance.

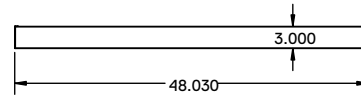
DRAWINGS & IMAGES

2x2

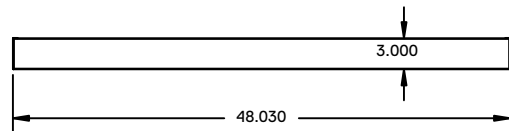
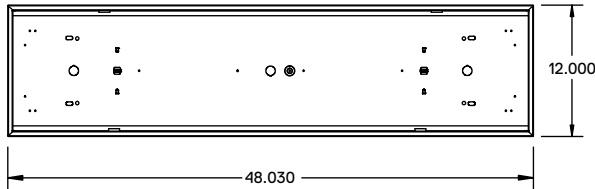
Back View



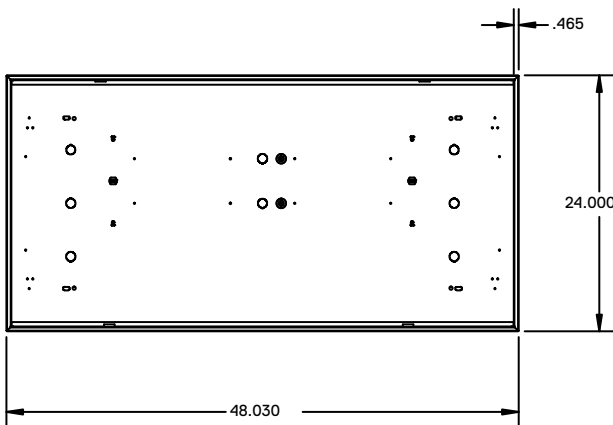
Side View



1x4



2x4



Replacement Lens Ordering Information

Series	Description
0153A22L	Replacement Acrylic lens for 2x2
0153A14L	Replacement Acrylic lens for 1x4
0153A24L	Replacement Acrylic lens for 2x4