



W4A Series

Linear Wall Washer Fixture

A linear Wall Washer fixture for distinctive architectural lighting plans. Ideal for lobbies, bathroom and office areas. W4A Series fixtures can be installed individually or in group patterns.

CONSTRUCTION

Die-formed and welded 22-gauge cold rolled steel knockouts on ends allow continuous wireway mounting. A 1/2" regressed flange at the bottom insures uniformity and rigidity. The housing to provide approximately uniform ambient uplight for ceiling illumination.

MOUNTING

Fixtures can be Semi-Recessed, Surface Mounted to the ceiling.

TYPICAL OPTIONS AND ACCESSORIES

Cord sets, whips, occupancy sensors, wire guards. Contact factory for additional options.

FIXTURE DIMENSIONS

24L: 23.875"W x 23.875"L x 4"H

48L: 11.875"W x 47.875"W x 4"H

96L: 2.875"W x 47.875"W x 4"H

SPECIFICATIONS

- 3 standard sizes – 2ft x 2ft, 1ft x 4ft, 2ft x 4ft
- 40+ standard patterns with custom patterns available
- Recessed mount for grid ceiling
- Many lumen package / wattage options via programmable drivers
- Multiple Kelvin temperature options (3000K, 3500K, 4000K, 5000K)
- Emergency battery backup options available
- CRI >80 (90 CRI available)
- >50,000 hrs of L70 LED life
- Rated for dry and damp locations
- 0-10 Volt dimmable 120-277V (120V ELV/TRIAC avail)
- Power factor >0.90
- 5 year warranty



CATALOG# : _____
 PROJECT : _____
 TYPE : _____

W4A Series

Linear Wall Washer Fixture

ORDERING GUIDE

Factory at your fingertips. Fill in the blanks to create your part number or create a custom configuration.

Sample Part Number:

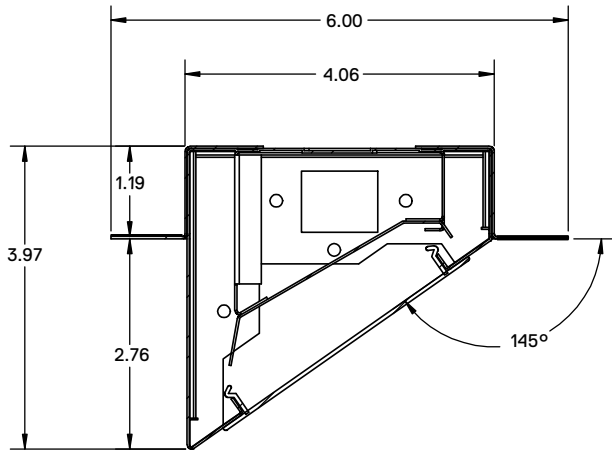
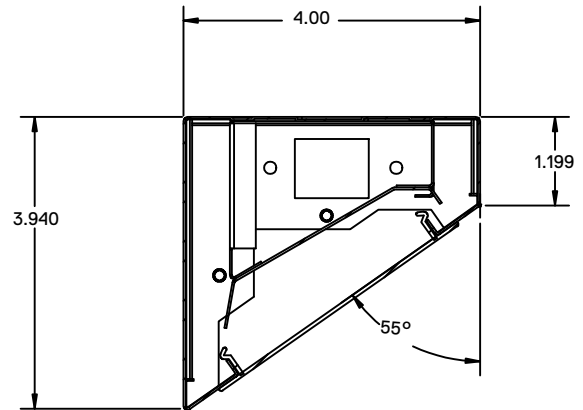
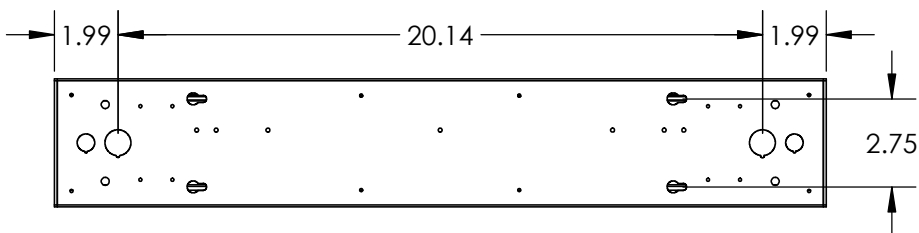
SERIES	DIFFUSER	LENGTH	GEAR	WATTAGE*	DRIVER	CCT/CRI	FINISH
W4AS Surfaced Mounted Linear Wall Washer	SF Snap In Frosted Acrylic Lens <small>(85% transmission) *Special for LEDs</small>	24L 24"L	R	12W1200L 12 Watts 1,200 Lumens	DMV 120-277VAC 0-10V Dimming	30K 3000K 80 CRI	WH White BK Black SI Silver
				24 Watts 2,400 Lumens			
W4ARF Recessed Mounted Linear Wall Washer		48L 48"L		24W2400L 24 Watts 2,400 Lumens	DMVFID 120-277VAC 0-10V Dimming <small>*Factory installed dimming wire</small>	35K 3500K 80 CRI	
				48W4800L 48 Watts 4,800 Lumens			
		96L 96"L		48W4800L 48 Watts 4,800 Lumens		40K 4000K 80 CRI	
				96W9600L 96 Watts 9,600 Lumens			

OPTIONS

- PI1 3 Wires Harness, Including White, Black and Green.
- PI2 4 Wires Harness, Including White, Black, Green and Blue for Emergency Battery Backup.
- PI3D 5 Wires Harness, Including White, Black, Green, Violet and Gray.

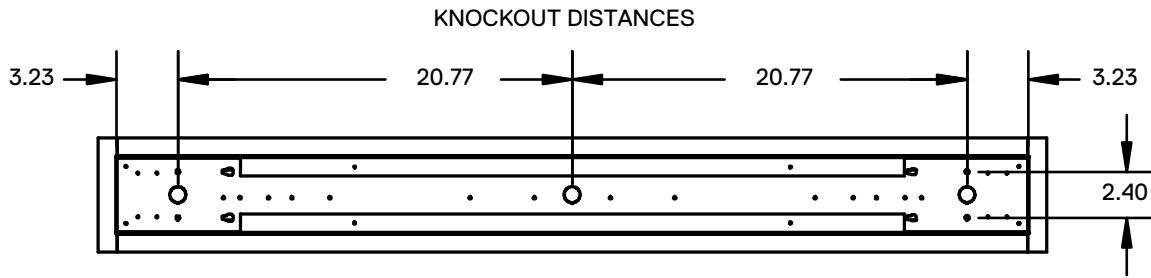
*Programmable LED drivers allow custom configured wattages and corresponding lumens.

NOTE: Values shown are typical or recorded under standardized conditions at 25°C. Actual performance may vary based environment or application. Specifications are subject to change without notice. We reserve the right to change design, materials, LED's and finish in any way that will not alter installed appearance or reduce function and performance.

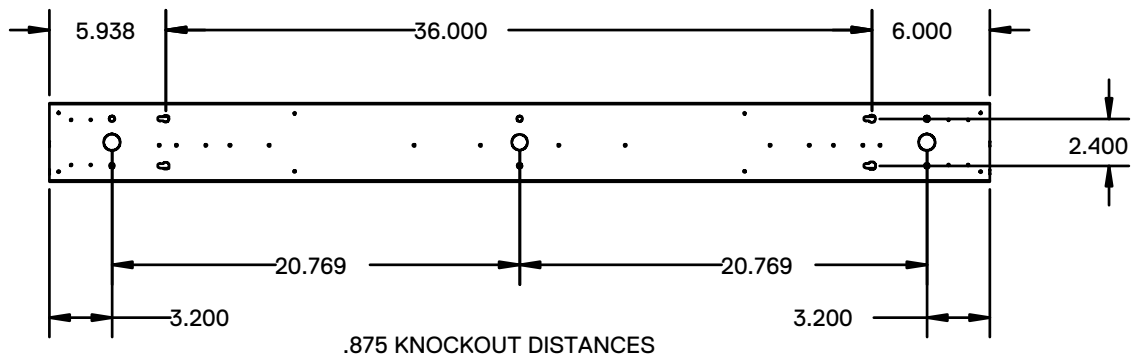
PRODUCT DIMENSIONS**Recessed Mount****Surface Mount****2FT Surface Mount**

PRODUCT DIMENSIONS

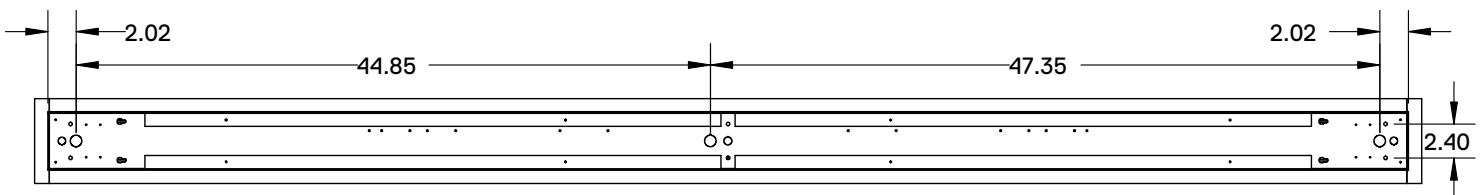
4FT Recessed Mount



4FT Surface Mount



8FT Recessed Mount



8FT Surface Mount

