



JOB NAME:

CAT#:

TYPE:

APPLICATIONS

The SRDIS LED is a specification grade LED surface mounted direct/indirect center diffuser luminaire which provides smooth and uniform ambient lighting for all commercial and industrial buildings. Reflected light from matte surfaces providing a softened perforated appearance to the modern office environment.

Housing is die-formed and embossed code 20 gauge steel. Luminaire body finish is high reflectance baked white enamel, with matte white reflectors. Wiring knockouts are provided on the back of housing. Center diffuser snaps into place; no tools are required for removal. Listed by and bears ETL label.

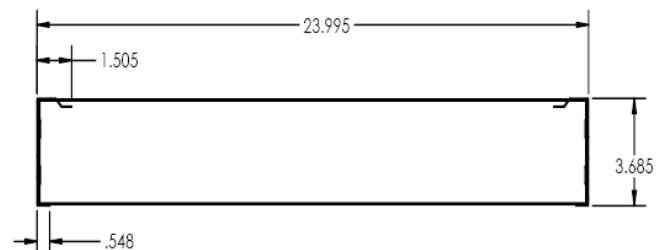
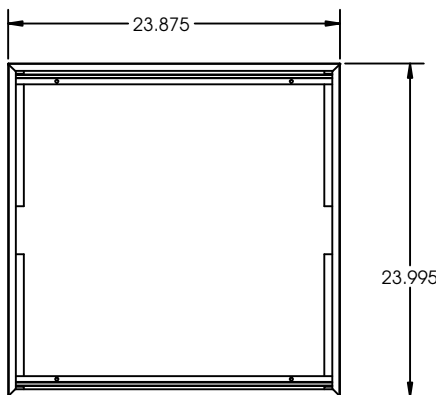


FEATURES & BENEFITS

- Direct/indirect provides a low glare light source
- Matte white reflective surfaces for soft, uniform light distribution
- Multiple diffuser options available
- Over 80% efficiency when used with frosted and acrylic diffuser
- 0-10V dimming driver standard
- Easy access plate for quick wiring
- ETL_{us} listed for damp locations

DIMENSIONS

2X2



Dimensions and specifications subject to change without notice.





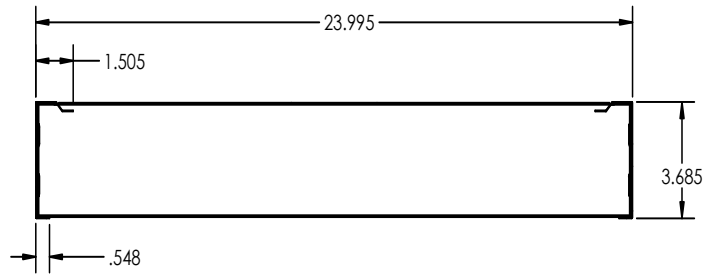
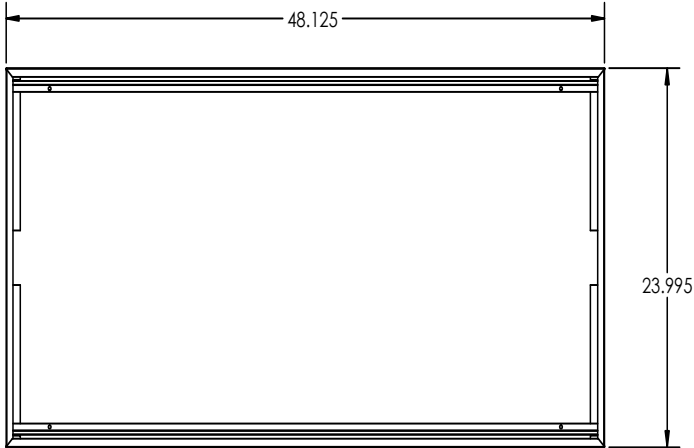
JOB NAME:

CAT#:

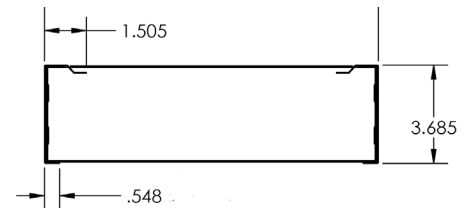
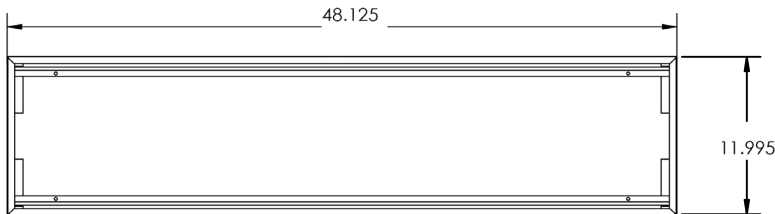
TYPE:

DIMENSIONS

2X4



1X4





JOB NAME:

CAT#:

TYPE:

ORDERING

EXAMPLE: SRDISE 14 LED 15 DMV FR 30 EM SNS200

SRDIS		LED								
1. SERIES	2. SIZE	3. GEAR	4. WATTAGE/LUMENS	5. DRIVER	6. DIFFUSER	7. COLOR TEMP	8. EM			
SRDIS	14 1X4	LED	<u>1x4</u>	DMV Dimming multivolt 120-277V 0-10V	FR Frosted PF Perforated Basket RL Ribbed Acrylic Lens	30 3000K 35 3500K 40 4000K 50 5000K	EM 10 Watt 1300 Lumen Battery Backup EM4F Emergency Battery Backup 4W ~450 Lumens EM7 Emergency Battery Pack 7W ~ 1300 Lumens EM5 Emergency Battery Pack 5W ~ 850 Lumens			
	22 2X2		32 32W 4300 Lumens					24 24W 2700 Lumens		
	24 2X4		48 48W 6000 Lumens					<u>2x2</u>		
			24 24W 2700 Lumens					28 28W 3150 Lumens		
			32 32W 3600 Lumens					42 42W 4300 Lumens		
			42 42W 4300 Lumens					<u>2x4</u>		
			32 32W 4350 Lumens					32 32W 4350 Lumens		
			40 40W 5350 Lumens					40 40W 5350 Lumens		
			48 48W 6100 Lumens					48 48W 6100 Lumens		
			57 57W 6800 Lumens					57 57W 6800 Lumens		

Lumens are subject to a tolerance of ±10%. Wattage is approximate and subject to a tolerance of ±5%

NOTES:

¹Consult factory for Step Dimming Options

NOTE: Values shown are typical or recorded under standardized conditions at 25°C. Actual performance may vary based on environment or application. Specifications are subject to change without notice. We reserve the right to change design, materials, LED's and finish in any way that will not alter installed appearance or reduce function and performance.

