



JOB NAME:

CAT#:

TYPE:

### APPLICATIONS

A linear wall wash fixture for distinctive architectural lighting plans. Ideal for lobbies, bathroom and office areas. MW4A Series fixtures can be installed individually or in continuous runs.

Die-formed and welded 22 gauge cold rolled steel. Knockouts on ends allow continuous wireway mounting. A 1/2" regressed flange at the bottom insures uniformity and rigidity. The housing provides uniform ambient uplight for ceiling illumination.

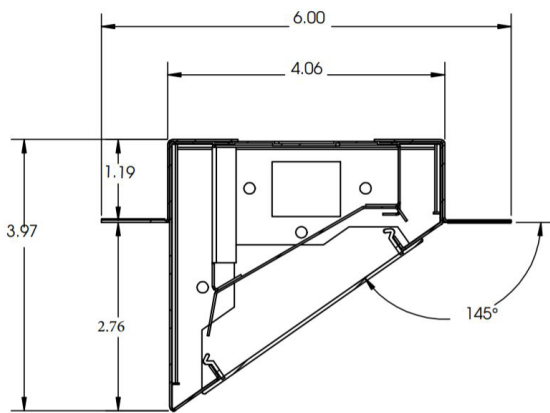


### FEATURES & BENEFITS

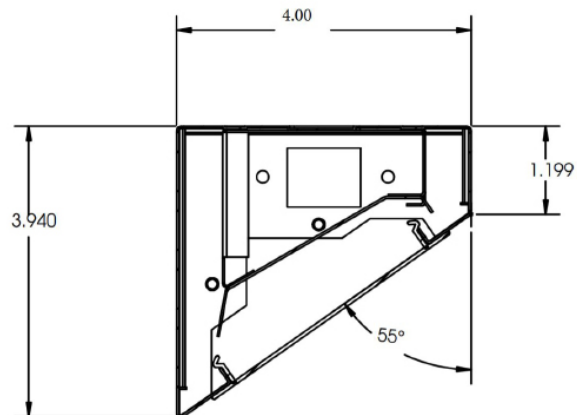
- Die-formed and welded 22-gauge cold rolled steel
- Knockouts on ends allow continuous wireway mounting
- Fixture accepts various lenses or louvers (sold separately) 4' and 8' units have a steel mullion to join two individual diffusers
- Fixtures can be semi-recessed, surface mounted to the ceiling, or pendant hung by stem or cable
- IC Rated
- cETL<sub>US</sub> Listed

### DIMENSIONS

**Recess Mounted**



**Surface Mounted**



**SIZE: W x L x H in inches**

2ft. - 4"W x 24"L x 4"H

4ft. - 4"W x 48"L x 4"H

8ft. - 4"W x 96"L x 4"H





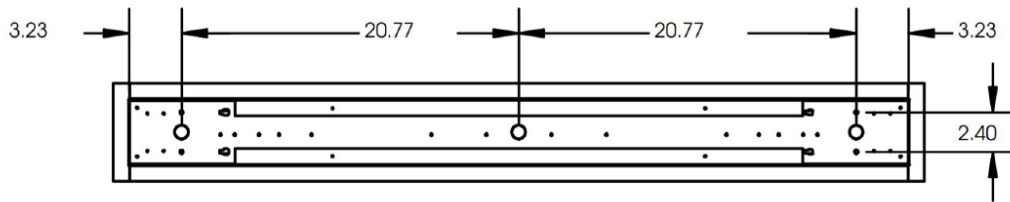
JOB NAME:

CAT#:

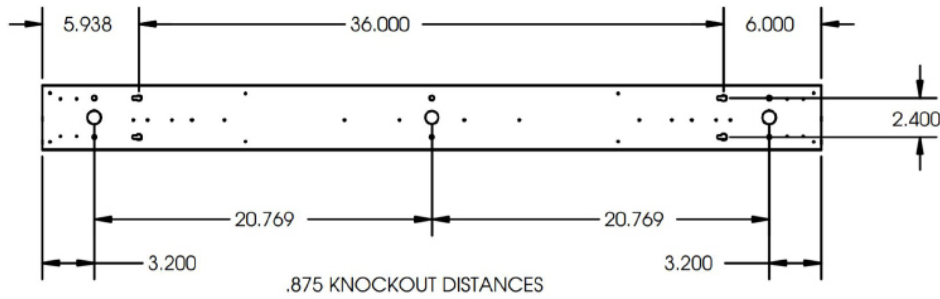
TYPE:

**DIMENSIONS**

**4ft. Recess Mounted**



**4ft. Surface Mounted**



Dimensions and specifications subject to change without notice.





JOB NAME:

CAT#:

TYPE:

**ORDERING**

EXAMPLE: MW4A R 24 LED 12 DMV BK SF 30 PI1

**MW4A**

**LED**

1. SERIES	2. MOUNTING	3. LENGTH	4. GEAR	5. WATTAGE/LUMENS	6. DRIVER	7. FINISH	8. LENS			
<b>MW4A</b>	<b>R</b> Recess Mount	<b>24</b> 24"	<b>LED</b>	<b>2 ft.</b>		<b>DMV</b> 120-277V Multivolt 0-10V Dimmable	<b>BK</b> Black <b>SI</b> Silver <b>WH</b> White	<b>SF</b> Snap-in Frosted Acrylic Lens (85% transmission)		
	<b>S</b> Surface Mount	<b>48</b> 48"		<b>12</b> 12 Watts 1200 Lumens	<b>24</b> 24 Watts 2400 Lumens				<b>SDMV</b> Step dimming Multivolt	
		<b>96</b> 96"		<b>4 ft.</b>						<b>24</b> 24 Watts 2400 Lumens
				<b>48</b> 48 Watts 4800 Lumens	<b>48</b> 48 Watts 4800 Lumens					<b>DHV</b> Lutron Driver
				<b>8 ft.</b>						<b>D347V</b> 347VAC 0-10V Dimming
				<b>48</b> 48 Watts 4800 Lumens	<b>96</b> 96 Watts 9600 Lumens					<b>D120</b> Triac Dimming 120VAC
										<b>D277</b> Triac Dimming 277VAC

**9. COLOR TEMP**

- 30** 3000K
- 35** 3500K
- 40** 4000K
- 50** 5000K

**10. CONTINUOUS RUN WIRING OPTIONS(O)<sup>1</sup>**

- PI1** 3 wire harness, including white black, and green (normally for non-dim applications)
- PI2** 4 wire harness, including white, black, green, and blue for emergency battery backup (normally for emergency circuit)
- PI3D** 5 wire harness, including white, black, green, violet, and gray (normally for 0-10V dimming)
- PI4D** 6 wire harness (normally for 0-10V dimming and emergency)

**9. CONFIGURATION**

- Blank** Individual
- B** Beginner Run
- E** Ender Run
- J** Joiner Run

**Notes:**

<sup>1</sup>O is Optional

**NOTE:** Values shown are typical or recorded under standardized conditions at 25°C. Actual performance may vary based on environment or application. Specifications are subject to change without notice. We reserve the right to change design, materials, LED's and finish in any way that will not alter installed appearance or reduce function and performance.

