

Series CLLLSF

FIXED LED Linear Lighting Channel

Saylite introduces an eye-catching selection of LED Linear Lighting channels that can be surface or pendant mounted individually or with unmatched styling and energy efficiency. Utilizing the latest in LED High Powered Lighting sized exactly to the specific channel provides micro-illumination that will not only highlight the area around it beautifully but say "look here". Ideal for general lighting applications in both commercial and residential applications for circulation spaces, high impact areas and residentially over tables, kitchen islands and home offices. The versatility and clean styling makes this an ideal choice in many applications. Suitable for dry and damp locations.

Our brand new All-In-One LED Linear Channel is new and improved to provide the easiest channel in the industry to specify, order and install. This integral driver channel in two different profiles provides the ideal solution for both individual fixtures (in 4 or 8ft), and to join multiple channels for longer, continuous runs (in 4 or 8ft multiples). This beautifully finished aluminum channel is so easy to install that the "do-it-yourselfer" can install in minutes and professional installers will appreciate not only the reduction in cost, but also the speed in which installation can be completed. A specially designed integral wiring harness (ordered separately) makes joining two channels electronically simple and efficient. A unique, mechanical joiner bracket in conjunction with our special joiner tool allows for joining two or more channels together with no light leak and a clean connection.

CONSTRUCTION

Anodized Aluminum Channel is lightweight, small dimensions and dissipates heat well, designed especially for the flexible LED Tape. Highly tooled plastic end caps screw onto the aluminum channel and protect the channel and LED tape from dust and keep the LED Tape clean and in optimum condition. A raceway in the back of the channel provides both a heat sink for the LED Tape and a holder for screws to pendant mount the channels. The channels can be suspended or flush mounted with optional clips. Snap-in flush frosted lens is specially formulated for smooth illumination of the LED Tape.



DIMENSIONS

CLLLSF

48L - 47.64"L x 2.16"W x 2.75"H

96L - 94.88"L x 2.16"W x 2.75"H

FEATURES & BENEFITS

- Suspended or flush mounted
- Suitable for individual or continuous run installations
- Max run 16ft with main power supply
- Easy installation
- Innovative anti-light leak clips in the space between diffuser and end-cap
- Aluminum channel
- Integral driver, snap-fit lens
- Integral wire harness
- Magnetic light leak block
- Life >50,000 hours
- Operating temperature -20°C to 55°C
- Constant Current 0-10 Volt dimmable 120-277V
- CRI >80
- Suitable for dry and damp locations



ORDERING GUIDE

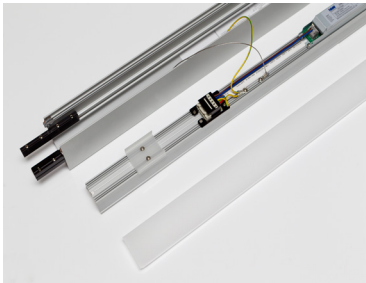
Pendant Mounted

LENGTH	ITEM NO	DESCRIPTION
4'	CLLLSF-48L31W-CDMV-30K-SA-HC605WH	2.2"W x 2.8"H x 4'L 31 Watt 3000K
8'	CLLLSF-96L62W-CDMV-30K-SA-HC605WH	2.2"W x 2.8"H x 8'L 62 Watt 3000K
12'	CLLLSF-144L93W-CDMV-30K-SA-HC605WH	2.2"W x 2.8"H x 12'L 93 Watt 3000K
16'	CLLLSF-192L124W-CDMV-30K-SA-HC605WH	2.2"W x 2.8"H x 16'L 124 Watt 3000K

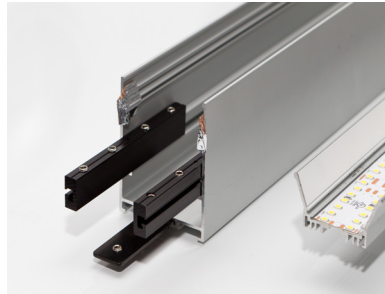
Surface Mounted

LENGTH	ITEM NO	DESCRIPTION
4'	CLLLSF-48L31W-CDMV-30K-SA-SURF	2.2"W x 2.8"H x 4'L 31 Watt 3000K
8'	CLLLSF-96L62W-CDMV-30K-SA-SURF	2.2"W x 2.8"H x 8'L 62 Watt 3000K
12'	CLLLSF-144L93W-CDMV-30K-SA-SURF	2.2"W x 2.8"H x 12'L 93 Watt 3000K
16'	CLLLSF-192L124W-CDMV-30K-SA-SURF	2.2"W x 2.8"H x 16'L 124 Watt 3000K

Change 30K to 40K for 4000K



Three-part system allows for easy wiring with prewired harnesses and allows for custom finishes on channel

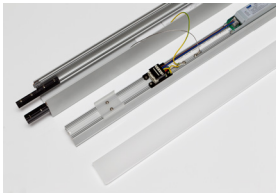


Joins easily with a mechanical spline

Features Include:

- Aluminum Channel
- Integral Driver
- Snap Fit Lens
- Magnetic Light Leak Block
- Integral Wire Harness

Mounting Accessories (order separately)



Hanging kit: included canopy and power feed (HC605WH)



Non Power Feed Side (HC605WHNPF)



Joiner (LLLSFJOINER)

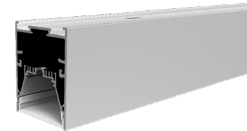


Lens Tool (LLLSFLENSTOOL)
Joiner Tool (LLLSFJOINERTOOL)

COMPONENT ORDERING INFORMATION

ITEM NO	DESCRIPTION
LLLSF - Aluminum Channel 2.2"W x (48"L or 96"L) x 2,8"H	
LLLSF48L31W3100LCDMV40KSA	31W 3100L, 4000K, Constant Current, 0-10V Dimming Multi-volt
LLLSF96L62W6200LCDMV40KSA	62W 6200L, 4000K, Constant Current, 0-10V Dimming Multi-volt

Change 40K to 30K for 3000K

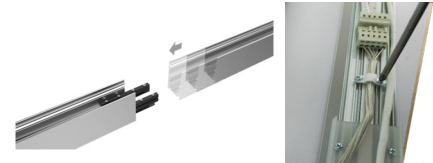


LLLSF
2.2"W x 2.8"H

JOIN TWO OR MORE CHANNELS TOGETHER

ITEM NO	DESCRIPTION
LLLSFJOINER	Mechanical Joiner to Join 2 CLLLSF Channels
LLLSFLENSTOOL	Tool Required to Remove Lens; 1 per installation needed
LLLSF5WMFH*	Wiring Harness 5" to Join 2 Channels

*Included with 12' and 16' run Channels only need to purchase for replacements



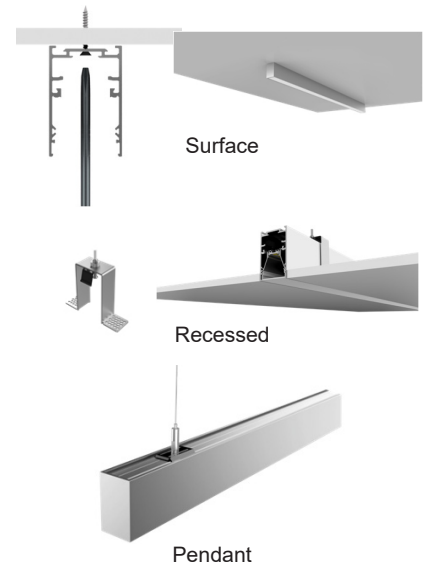
Mechanical Joiner is Simple and Clean and requires special tool.

Wiring Harness 5" to join 2 channels.

JOIN TWO OR MORE CHANNELS TOGETHER

ITEM NO	DESCRIPTION
LLLSFSURFKIT	Surface Mount Screw and Toggle Set of 3 (includes 24" power cord)
LLLSFRECKIT*	Recessed Mounting Brackets for LLLSF (Set of 2) (Includes 24" power cord)
LLLSFHCPF605WWH**	Pendant Mounting Power Feed Canopy Kit 5 Wire for up to 6FT Drop
LLLSFHCPF6125WWH**	Pendant Mounting Power Feed Canopy Kit 5 Wire for up to 12FT Drop
LLLSFHCPNF605WWH	Pendant Mounting Non-Power Canopy Kit, 6FT Cable w/Canopy
LLLSFHCPNF612WWH	Pendant Mounting Non-Power Canopy Kit, 12FT Cable w/Canopy

**Use one Power Feed Canopy Kit every place mounting to Power.
Non-power Feed Version Order Separately for mounting where No Power Feed is Required.



NOTE: Values shown are typical or recorded under standardized conditions at 25°C. Actual performance may vary based environment or application. Specifications are subject to change without notice. We reserve the right to change design, materials, LED's and finish in any way that will not alter installed appearance or reduce function and performance.