

Series 44P

LED Pendant Mount Linear 4" X 4"

The 4" x 4" steel profile provides a bold architectural look used individually or in continuous lengths to provide comfortable, bright general lighting. Snap fit frosted lens hides the LED arrays and provides excellent glare control. Easy to join, and easy to install. Available in standard sizes, outputs and finishes with a vast array of custom options.

CONSTRUCTION

Die-formed and welded 22-gauge cold-rolled steel. Knockouts on ends allow continuous wireway mounting. Housing is specially designed with separating compartments for direct and indirect lighting. Can be ordered to achieve both direct and indirect lighting, or one or the other.

DIFFUSERS

Fixture accepts various lenses or louvers.

TYPICAL OPTIONS & ACCESSORIES

Cord sets, whips, occupancy sensors, hanging kits, wire guards. Emergency battery backup option available. Contact factory for more details.



DIMENSIONS

2ft.-4"W x 24"L x 4"H

4ft.-4"W x 48"L x 4"H

8ft.-4"W x 96"L x 4"H

FEATURES & BENEFITS

- Pendant mount kits available
- For individual use or lined up in a continuous row, resulting in a clean line of light
- Recommended for commercial & residential applications
- Custom finishes available; contact factory
- CRI: >80 standard, 90 optional
- L70: >50,000 Hours
- Dimming: 0-10V 120-277V standard, 120V ELV/TRIAC optional
- Several Kelvin temperature options (3000K, 3500K, 4000K, 5000K)
- Emergency backup options available
- Power Factor: >0.90
- Suitable for damp and dry locations
- 5-Year Warranty



ORDERING GUIDE

2 Ft.

SERIES	MOUNTING	DIFFUSER	LENGTH	GEAR	UP WATTAGE *1	DOWN WATTAGE *
44	P Pendant	MW	24 24"	LR	U6	D12
		SF			U9	D18
						D12
					D24	

DRIVER	UP/DOWN CONTROL	FINISH ²	CRI/CCT ³	CONFIGURATION
DMV	Blank Paired Up/Down Dimming+control	WH White	30K 3000K	Blank Individual
G120		BK Black	80 CRI	-B Beginner Run
D1MV	11 Separate Up/Down Dimming+control	SI Silver	35K 3500K	-E Ender Run
SRMV		** Custom Color	40K 4000K	-J Joiner
DALMV			50K 5000K	
			80 CRI	
			930K 3000K	
			90 CRI	
			935K 3500K	
			90 CRI	
			940K 4000K	
			90 CRI	

OPTIONS	
HANGING KIT	SENSOR
HC301WH	SS On/Off Sensor
HC302WH	
HC3015WWH	
HC3025WWH	
HC3016WH	
HC3026WH	
2SCS24WH	
	SV Bi-Level Sensor
	SD Daylight Harvesting Sensor
	SM Microwave Sensor

- Note:
1. Uplight and downlight not available in combination for 2 ft fixtures. Consult factory for more information.
 2. **RAL custom finishes available. Consult factory for more information or pricing requests.
 3. Consult factory for 90 CRI 5000K availability.

* Programmable LED drivers allow custom configured wattages and corresponding lumens.

NOTE: Values shown are typical or recorded under standardized conditions at 25°C. Actual performance may vary based environment or application. Specifications are subject to change without notice. We reserve the right to change design, materials, LED's and finish in any way that will not alter installed appearance or reduce function and performance.

ORDERING GUIDE

4 Ft. and 8 Ft.

SERIES	MOUNTING	DIFFUSER	LENGTH	GEAR	UP WATTAGE*1	DOWN WATTAGE*1	
44	P Pendant	SF Snap-in frosted acrylic lens (85% transmission) Special for LEDs; only available for uplight and downlight	48 48"	LR	U12 12 Watts, 1200 Lumens	D24 24 Watts, 2400 Lumens	
					U18 18 Watts, 1800 Lumens	D36 36 Watts, 3600 Lumens	
						D24 24 Watts, 2400 Lumens	
						D48 48 Watts, 4800 Lumens	
		WW Wall Wash Reflector					
			96 96"	LR	U24 24 Watts, 2400 Lumens	D48 48 Watts, 4800 Lumens	
					U36 36 Watts, 3600 Lumens	D72 72 Watts, 7200 Lumens	
						D48 48 Watts, 4800 Lumens	
						D96 96 Watts, 9600 Lumens	

DRIVER	UP/DOWN CONTROL	FINISH ²	CRI/CCT ³	CONFIGURATION	EMERGENCY
DMV 120-277VAC 0-10V Dimming	Blank Paired Up/Down Dimming+control	WH White	30K 3000K 80 CRI	Blank Individual	EM14 14W Emergency battery backup (integrated in fixtures 4' and longer)
G120 ELV/TRIAC Dimming at 120V only	11 Separate Up/Down Dimming+control	BK Black	35K 3500K 80 CRI	-B Beginner Run	
D1MV 120-277VAC 0-10V Dimming (dim to 1%)		SI Silver	40K 4000K 80 CRI	-E Ender Run	
SRMV 120-277VAC Phillips Sensor-Ready		** Custom Color	50K 5000K 80 CRI	-J Joiner	
DALMV 120-277VAC DALI Dimming			90 CRI 3000K		
			90 CRI 3500K		
			90 CRI 3500K		
			940K 4000K 90 CRI		

OPTIONS

HANGING KIT		SENSOR	
HC301WH	Cable kit with 4' cable & 3 wires power feed/cable incl. and white canopy	SS	On/Off Sensor
HC302WH	Cable kit with 12' cable & 3 wires power feed/cable incl. and white canopy	SV	Bi-Level Sensor
HC3015WWH	Cable kit with 4' cable & 5 wires power feed/cable incl. and white canopy	SD	Daylight Harvesting Sensor
HC3025WWH	Cable kit with 12' cable & 5 wires power feed/cable incl. and white canopy		
HC3016WH	Cable kit with 4' cable & 6 wires power feed/cable incl and white canopy		
HC3026WH	Cable kit with 12' cable & 6 wires power feed/cable incl and white canopy	SM	Microwave Sensor
2SCS24WH	Two stem kits with 24" stem, canopy and mounting hardware for a 4' fixture		

Note:

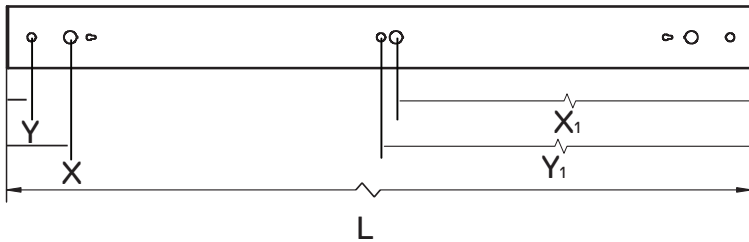
1. Uplight and downlight not available in combination for 2 ft fixtures. Consult factory for more information.
2. **RAL custom finishes available. Consult factory for more information or pricing requests.
3. Consult factory for 90 CRI 5000K availability.

* Programmable LED drivers allow custom configured wattages and corresponding lumens.

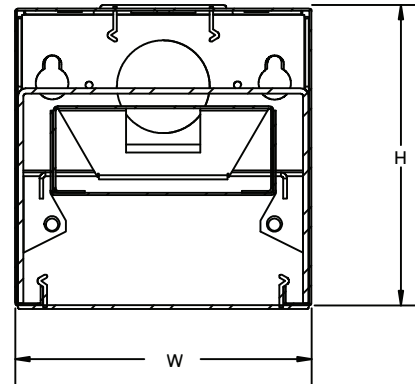
NOTE: Values shown are typical or recorded under standardized conditions at 25°C. Actual performance may vary based environment or application. Specifications are subject to change without notice. We reserve the right to change design, materials, LED's and finish in any way that will not alter installed appearance or reduce function and performance.

PENDANT MOUNT DRAWINGS AND DIMENSIONS

Top Side View



End Side View



PART	L	W	H	X	Y	X ₁	Y ₁
44P12L	12.00"	4.00"	4.05"	*	*	*	*
44P24L	24.00"	4.00"	4.05"	*	*	*	*
44P36L	36.00"	4.00"	4.05"	*	*	*	*
44P48L	48.00"	4.00"	4.05"	4.00"	1.50"	23.00"	24.00"
44P60L	60.00"	4.00"	4.05"	*	*	*	*
44P72L	72.00"	4.00"	4.05"	*	*	*	*
44P84L	84.00"	4.00"	4.05"	*	*	*	*
44P96L	96.00"	4.00"	4.05"	4.79"	6.00"	48.97"	48.00"

L-Length
 W-Width
 H-Height
 X-0.875" Knock Out Distance
 Y-0.575" Hanging Kit Distance
 * - Please consult factory

REPLACEMENT LENS ORDERING INFORMATION

SERIES	DESCRIPTION
044PSF24L	Replacement Snap-in Frosted lens for 24"
044PSF48L	Replacement Snap-in Frosted lens for 48"
044PSF96L	Replacement Snap-in Frosted lens for 96"



Uplight & Downlight



Continuous Run End



Wall/Pendant Mount

We reserve the right to change design, materials, LED's and finish in any way that will not alter installed appearance or reduce function and performance.