

Series LAB

LINEAR ACOUSTIC BAFFLE

Introducing a new eye catching high efficiency LED light fixture with a narrow acoustic baffle made of sound absorbing material. Class A fire rating option available. It integrates lighting and an acoustic solution into one customizable product. The acoustic material helps create a beautiful and highly functional acoustic baffled ceiling installation. It can be combined with unlit baffles or it can be used as a stand-alone acoustic fixture. Offering multiple colors for different applications or mixing colors to create a dynamic look. Pair LED light fixture with acoustic baffles in the same or complimentary colors. Available in 2ft increments up to 8ft in length and various heights from 12" to 24".

CONSTRUCTION

Acoustic material is 100% polyester containing at least 40% recycled plastic bottles(PET). Class B fire rating and moisture resistant. Noise Reduction Coefficient (NRC) average around 0.75. Fixture housing is die-formed and welded 22-gauge cold rolled steel. Housing is specially designed for direct or indirect lighting.

MOUNTING

Pendant mount with air craft cable kit options from 12" to 20' long.

DIMENSIONS

24L - 24"L x 3"W
48L - 48"L x 3"W
72L - 72"L x 3"W
96L - 96"L x 3"W

Height Options

12" / 16" / 24"

SPECIFICATIONS

- Narrow Sound Absorbing Material
- 2ft increments up to 8ft length
- Various panel height from 12" to 24"
- Functional as stand-alone light fixture or as part of matching acoustic baffle
- Mix and match with acoustic baffle in different colors to create a dynamic look
- Snap-in frosted acrylic lens
- Easy installation
- Life >50,000 hours
- Constant Current 0-10 Volt dimmable 120-277V
- CRI >80
- Suitable for dry and damp locations

ORDERING INFORMATION-Direct or Indirect Only

Sample Part Number: LAB-24X12-LY-D-12W-DMV-30K-A52-W

SERIES	LENGTH	X	HEIGHT	GEAR	DIRECT/INDIRECT	WATTAGE & LUMENS		DRIVER	COLOR TEMP						
LAB Linear Acoustic Baffle	24	24.00"	12	12.00"	LY	D	Down Light	12W	12 Watts 1320 Lumens	DMV G120	0-10V dimming Triac or ELV dimming at 120V only	30K	3000K		
			16	16.00"		U	Up Light	24W	24Watts 2640 Lumens			35K	3500K		
			24	24.00"								40K	4000K		
	48	48.00"	Consult for other height options					24W	24 Watts 2640 Lumens					50K	5000K
								48W	48 Watts 5280 Lumens						
								36W	36 Watts 3960 Lumens						
	72	72.00"						72W	72 Watts 7920 Lumens						
								96W	96 Watts 10560 Lumens						
	96	96.00"													

FLAIR A		FLAIR B		MATERIAL CLASS		OPTIONS	
A52	Latte	Blank	Regressed	Blank	Class B	HC605WH	Cable kit with 6' cable & 5 wire power feed/cable incl., clear cord and white canopy (included power feed and non-power feed)
A50	Caramel	W	Wood Ends	A	Class A	HC605WHNPF	Cable kit with 6' cable & white canopy, non power feed (non-power feed only)
A43	Lava	M	Metal Seam				

ORDERING INFORMATION-Unlit Baffle

SERIES	LENGTH	X	HEIGHT	FLAIR A		FLAIR B		MATERIAL CLASS		OPTIONS		
LAB Linear Acoustic Baffle	24	24.00"	12	12.00"	A52	Latte	Blank	Regressed	Blank	Class B	HC605WHNPF	Cable kit with 6' cable & white canopy, non power feed (non-power feed only)
	48	48.00"	16	16.00"	A50	Caramel	W	Wood Ends	A	Class A		
	72	72.00"	24	24.00"	A43	Lava	M	Metal Seam			HC612WHNPF	Cable kit with 12' cable & white canopy, non power feed (non-power feed only)
	96	96.00"										

Note:
*Programmable LED drivers allow custom configured wattages and corresponding lumens.
We reserve the right to change design, materials, LED's and finish in any way that will not alter installed appearance or reduce function and performance.

ORDERING INFORMATION-Direct and Indirect

Sample Part Number: LAB-24X12-LY-U6D12-DMV-30K-A52-W

SERIES	LENGTH	X	HEIGHT	GEAR	WATTAGE & LUMENS		DRIVER		CCT		FLAIR A		
LAB Linear Acoustic Baffle	24	24.00"	12	12.00"	LY	U6D12	Uplight 6 Watts Downlight 12 Watts 1980 Lumens	DMV G120	0-10V dimming Triac or ELV dimming at 120V only	30K 35K 40K 50K	3000K 3500K 4000K 5000K	A52	Latte
			16	16.00"								A50	Caramel
			24	24.00"		A43	Lava						
	Consult for other height options												
	48	48.00"	U12D24	Uplight 12 Watts Downlight 24 Watts 3960 Lumens		Up and Down	U18D36					Uplight 18 Watts Downlight 36 Watts 5940 Lumens	
72	72.00"	U18D36			Uplight 18 Watts Downlight 36 Watts 5940 Lumens								
96	96.00"		U27D54	Uplight 27 Watts Downlight 54 Watts 8910 Lumens									
		U24D48	Uplight 24 Watts Downlight 48 Watts 7920 Lumens										
U36D72	Uplight 36 Watts Downlight 72 Watts 11880 Lumens												

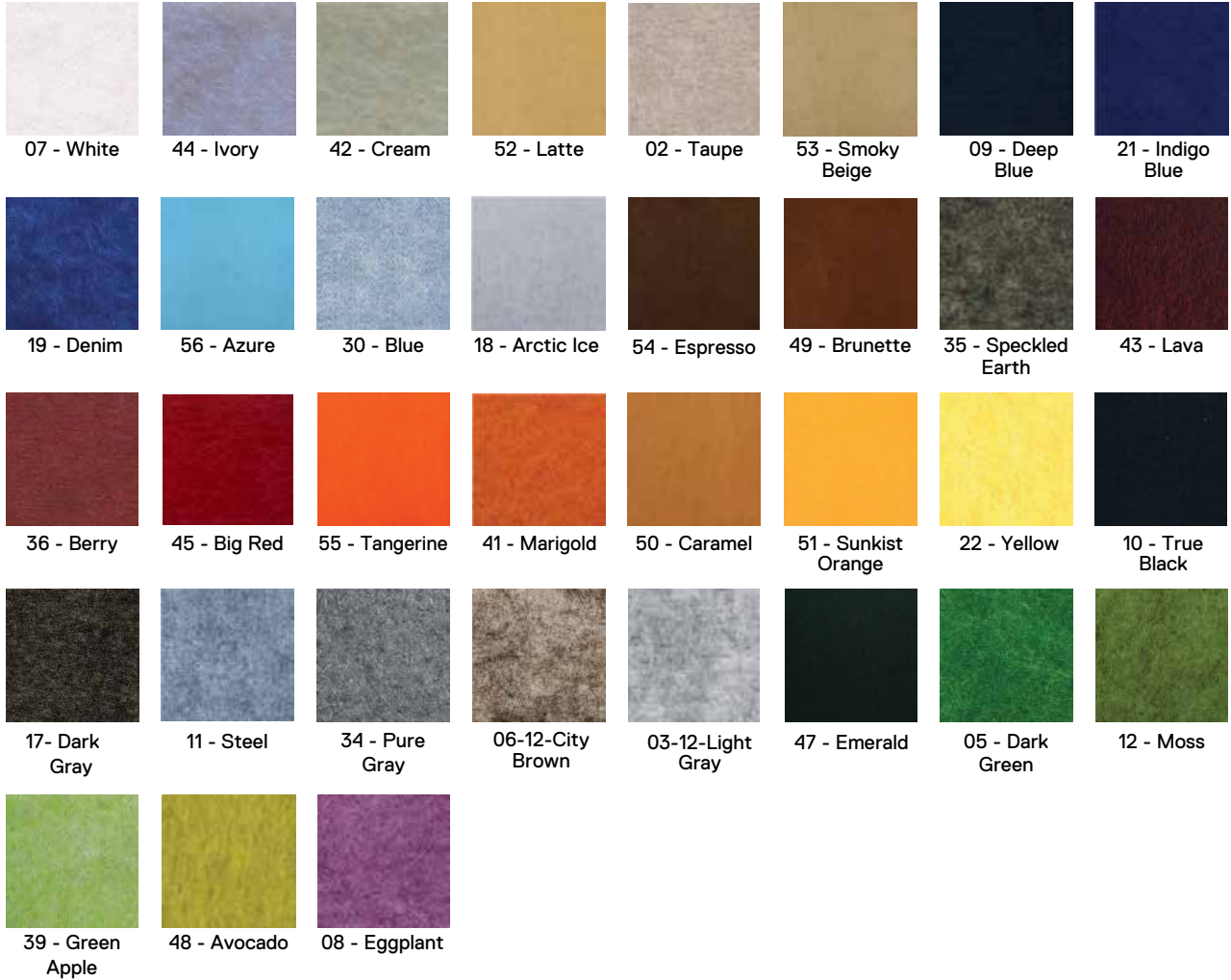
FLAIR B		MATERIAL CLASS		OPTIONS	
Blank	Regressed	Blank	Class B	HC605WH	Cable kit with 6' cable & 5 wires power feed/cable incl., clear cord and white canopy (included power feed and non-power feed)
W	Wood Ends	A	Class A	HC605WHNPF	Cable kit with 6' cable & white canopy, non power feed (non-power feed only)
M	Metal Seam			HC612WH	Cable kit with 12' cable & 5 wires power feed/cable incl., clear cord and white canopy (included power feed and non-power feed)
				HC612WHNPF	Cable kit with 12' cable & white canopy, non power feed (non-power feed only)

ORDERING INFORMATION-Unlit Baffle

SERIES	LENGTH	X	HEIGHT	FLAIR A		FLAIR B		MATERIAL CLASS		OPTIONS		
LAB Linear Acoustic Baffle	24	24.00"	12	12.00"	A52	Latte	Blank	Regressed	Blank	Class B	HC605WHNPF	Cable kit with 6' cable & white canopy, non power feed (non-power feed only)
	48	48.00"	16	16.00"	A50	Caramel	W	Wood Ends				
	72	72.00"	24	24.00"	A43	Lava	M	Metal Seam	A	Class A	HC612WHNPF	Cable kit with 12' cable & white canopy, non power feed (non-power feed only)
	96	96.00"										

Note:
*Programmable LED drivers allow custom configured wattages and corresponding lumens.
We reserve the right to change design, materials, LED's and finish in any way that will not alter installed appearance or reduce function and performance.

ACOUSTIC MATERIAL COLOR OPTIONS



END OPTIONS



Wood End (W)

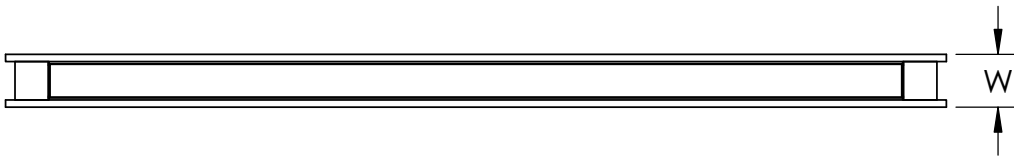
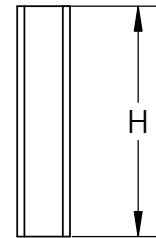
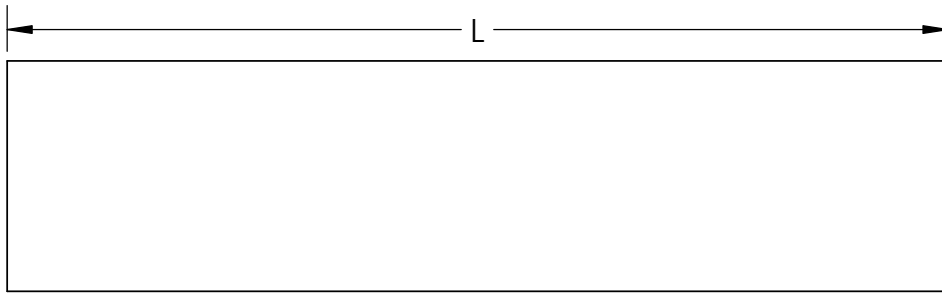
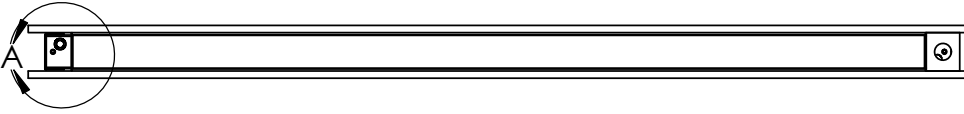


Metal Seam (M)



Regressed (Standard)

DRAWINGS & IMAGES



PART	L	W	H
LAB24	24.00"	2.75"	12",16",24"
LAB48	48.00"	2.75"	12",16",24"
LAB72	72.00"	2.75"	12",16",24"
LAB96	96.00"	2.75"	12",16",24"

L-Length
W-Width
H-Height

