

# Series MAX/RDX

Choice of Round or Square Profile

Low Profile LED Strip

Full body micro-silhouette makes a bold statement with a minimal design in a variety of standard powder coated finish options, as well as custom colors. Scaled to the LED module, the drop frosted diffuser surrounds the LEDs for soft lighting. MAX/RDX fixture can be surface mounted on wall or ceiling or pendant mounted with specially engineering cable mounting kit. MAX/RDX fixtures can be used individually or in a continuous run, either surface, wall, or pendant mounted. Ideal for retail applications.

## CONSTRUCTION

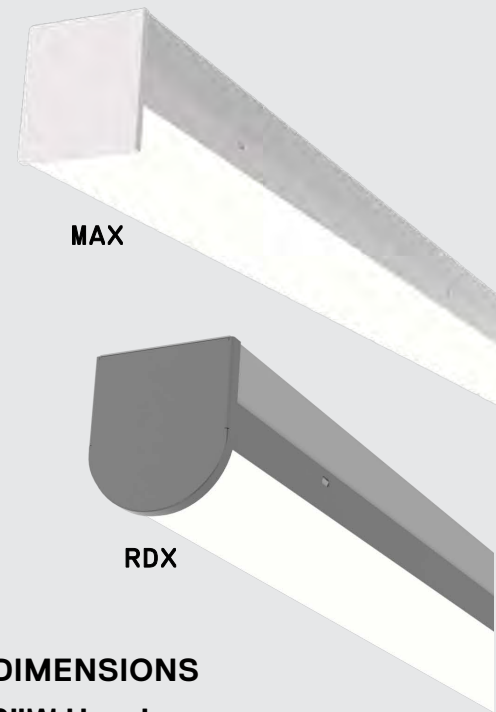
Housing is die-formed and embossed 22 gauge steel, chemically treated to both resist corrosion and also to enhance paint adhesion.

## MOUNTING

Pendant mount or surface mount (horizontal or vertical).

## TYPICAL OPTIONS & ACCESSORIES

See page 2 for multiple sensor options, finish options and emergency battery backup choices available.



## DIMENSIONS

### 2"W Housing

24"L x 2"W x 2.972"H

36"L x 2"W x 2.972"H

48"L x 2"W x 2.972"H

96"L x 2"W x 2.972"H

### 3"W Housing

24"L x 3"W x 3.375"H

36"L x 3"W x 3.375"H

48"L x 3"W x 3.375"H

96"L x 3"W x 3.375"H

## FEATURES & BENEFITS

- For individual use or in continuous runs through use of joining brackets
- Variety of lumen packages/wattages through use of programmable drivers
- Multiple color temperatures available (3000K, 3500K, 4000K and 5000K)
- Available with smooth frosted lens
- Multiple powder coat finish colors available
- Suitable for dry and damp locations
- Emergency battery backup available
- >50,000 hrs of L70 LED life
- CRI >80
- 0-10 Volts dimmable 120-277V
- Power factor > 0.90
- 5 year warranty



### ORDER INFORMATION

Factory at your fingertips. Fill in the blanks to create your part number or create a custom configuration.

SENSOR <sup>1</sup>		SERIES	LENS		LENGTH		WATTAGE & LUMENS <sup>2</sup>		DRIVER		CCT <sup>3</sup>			
SD Daylight Harvesting	MAX2	2" Wide Square Housing	FR	Frosted Lens	24L	24"	Q14W1700L	14 Watts 1700 Lumens	DMV	122-277VAC 0-10V Dimming	30K	3000K		
							Q22W2600L	22Watts 2600 Lumens				80CRI		
					36L	36"	Q21W2550L	21 Watts 2550 Lumens				35K	3500K	
	SS On/Off Sensor	RDX2			2" Wide Round Housing	48L	48"	Q33W3900L				33 Watts 3900 Lumens	40K	4000K
								Q28W3400L				28 Watts 3400 Lumens	80CRI	
						72L	72"	Q44W5200L				44 Watts 5200 Lumens	50K	5000K
MAX3	3" Wide Square Housing	FR	Frosted Lens	24L	24"	Q20W2500L	20 Watts 2500 Lumens	DMV	122-277VAC 0-10V Dimming	30K	3000K			
						B41W5000L	41 Watts 5000 Lumens				80CRI			
				36L	36"	Q28W3000L	28 Watts 3000 Lumens				35K	3500K		
				RDX3	3" Wide Round Housing	48L	48"				Q41W5000L	41 Watts 5000 Lumens	40K	4000K
											B82W10000L	82 Watts 10000 Lumens	80CRI	
72L	72"	Q56W6000L	56 Watts 6000 Lumens			50K	5000K							
96L	96"	Q82W10000L	82 Watts 10000 Lumens	B164W20000L	164 Watts 20000 Lumens		80CRI							

FINISH <sup>4</sup>		CONFIGURATION		FLAIR <sup>5</sup>		EMERGENCY OPTIONS		OPTIONS/ACCESSORIES	
WH	White	Blank	Individual	RD	Red	EM14	14W Emergency backup (Remote mount only for fixtures 3ft and shorter; integrated in MAX3/RDX3 4ft and longer)	GT310	Cable kit with (2) 10' aircraft cable
BK	Black	-B	Beginner run	BL	Blue			GT315	Cable kit with (2) 15' aircraft cable
SI	Silver	-E	Ender run	BK	Matte Black			C15WH	15' 3 wires 18-gauge power cord
		-J	Joiner					C515WH	15' 5 wires 18-gauge power cord
								HC3015WWH	4ft White Canopy Kit with 5 Wire Cord
								HC3016WWH	4ft White Canopy Kit with 6 Wire Cord
								HC3025WWH	12ft White Canopy Kit with 5 Wire Cord
								HC3026WWH	12ft White Canopy Kit with 6 Wire Cord

**Note:**

- Sensors are not integrated and add approx. 3 inches to overall fixture length. Adding a sensor to an existing fixture requires rewiring.
- Minimum fixture wattage of 10W. Minimum 5W per fixture foot, maximum 20.5W per fixture foot. Programmable LED drivers allow custom configured wattages and corresponding lumens. Power feed cable is 18 AWG, a power drop will be required every 48 feet of fixture length OR every 800W, whichever comes first.
- Consult factory for 90CRI and 5000K availability.
- Finish refers to the color of the driver cover portion of the fixture body.
- Flair refers to the end caps and middle stripe of the fixture body. Choose a standard flair color for your fixture from the guide on the following page.

We reserve the right to change design, materials, LEDs and finish in any way that will not alter installed appearance or reduce function and performance.

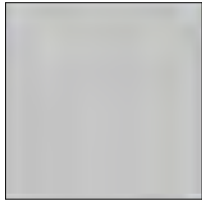
## STANDARD FLAIR COLORS AND FINISHES



Gloss Black  
(GB)



Matte Black  
(BK)



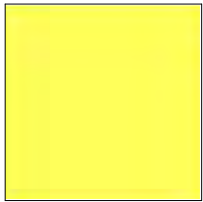
Matte Silver  
(SL)



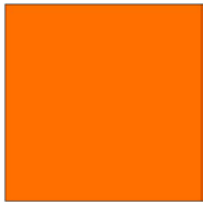
Statuary Bronze  
(BZ)



Glimmer (Iron)  
(IR)



Safety Yellow  
(YL)



Safety Orange  
(OR)



Red  
(RD)



Fire Engine Red  
(FR)

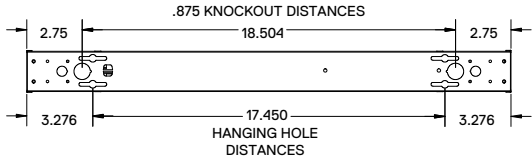


Blue  
(BL)

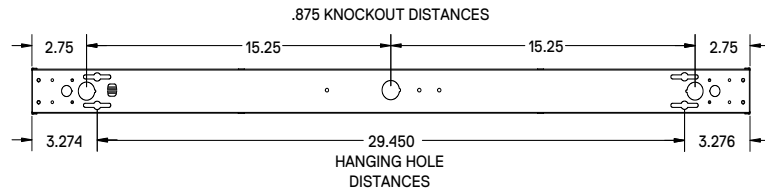
**NOTE:** Factory offers any Tiger Drylac RAL finish, contact Saylite for more information. Consult factory to special order custom 'real wood' finishes.

### DRAWINGS & IMAGES

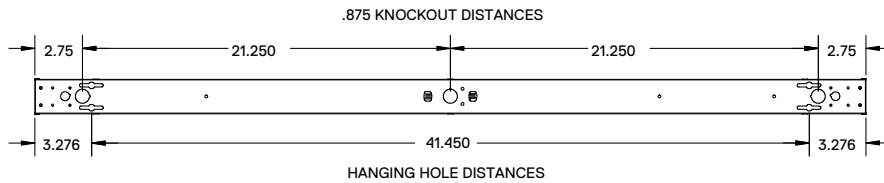
#### MAX2FR24L / RDX2FR24L



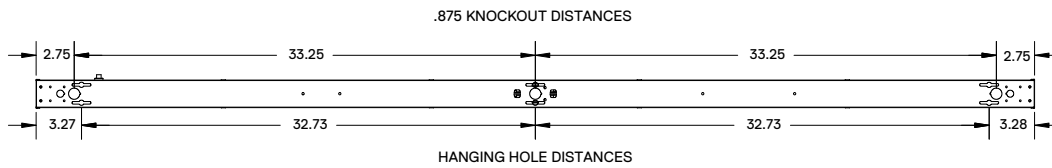
#### MAX2FR36L / RDX2FR36L



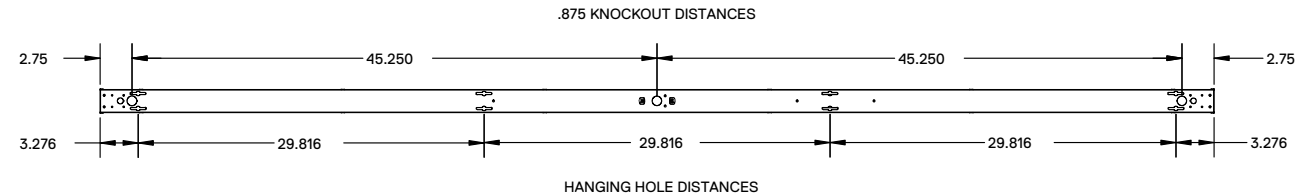
#### MAX2FR48L / RDX2FR48L



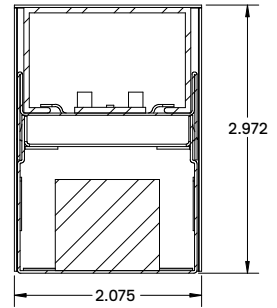
#### MAX2FR72L / RDX2FR72L



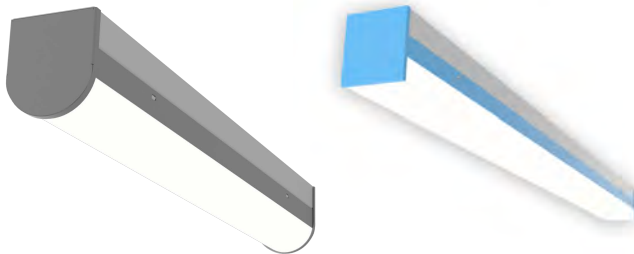
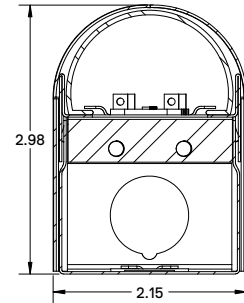
#### MAX2FR96L / RDX2FR96L



Square Lens Profile



Round Lens Profile



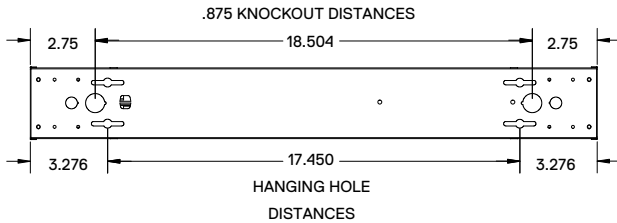
Consult factory for different finish

### Replacement Lens Ordering Information

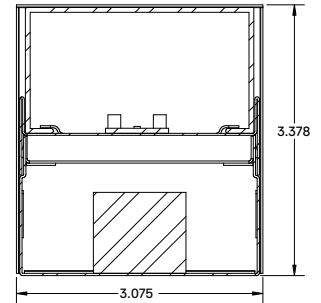
SERIES	DESCRIPTIONS
OMAX2FR24L	Replacement frosted lens for 24"L x 2.075"W
OMAX2FR48L	Replacement frosted lens for 48"L x 2.075"W
OMAX2FR96L	Replacement frosted lens for 96"L x 2.075"W
OMAX3FR24L	Replacement frosted lens for 24"L x 3.075"W
OMAX3FR48L	Replacement frosted lens for 48"L x 3.075"W
OMAX3FR96L	Replacement frosted lens for 96"L x 3.075"W

**DRAWINGS & IMAGES**

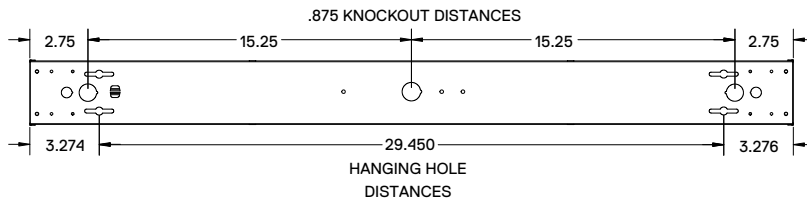
**MAX3FR24L / RDX3FR24L**



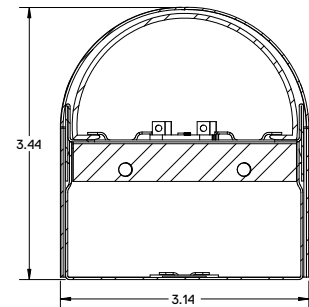
Square Lens Profile



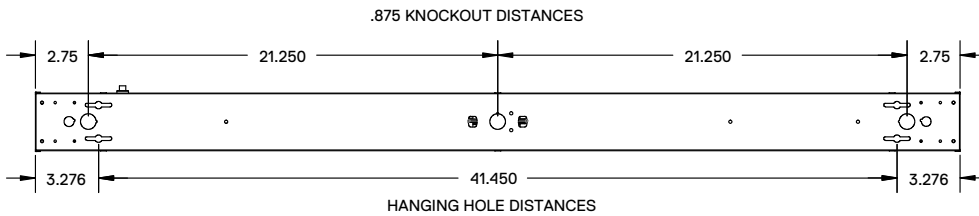
**MAX3FR36L / RDX3FR36L**



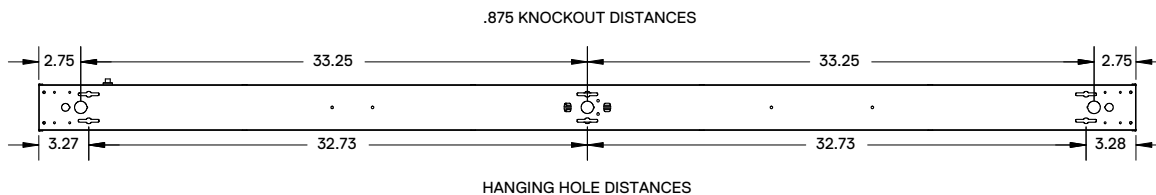
Round Lens Profile



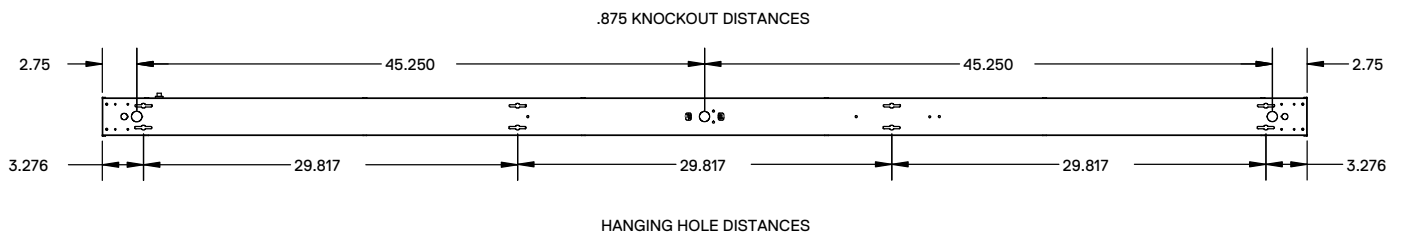
**MAX3FR48L / RDX3FR48L**



**MAX3FR72L / RDX3FR72L**



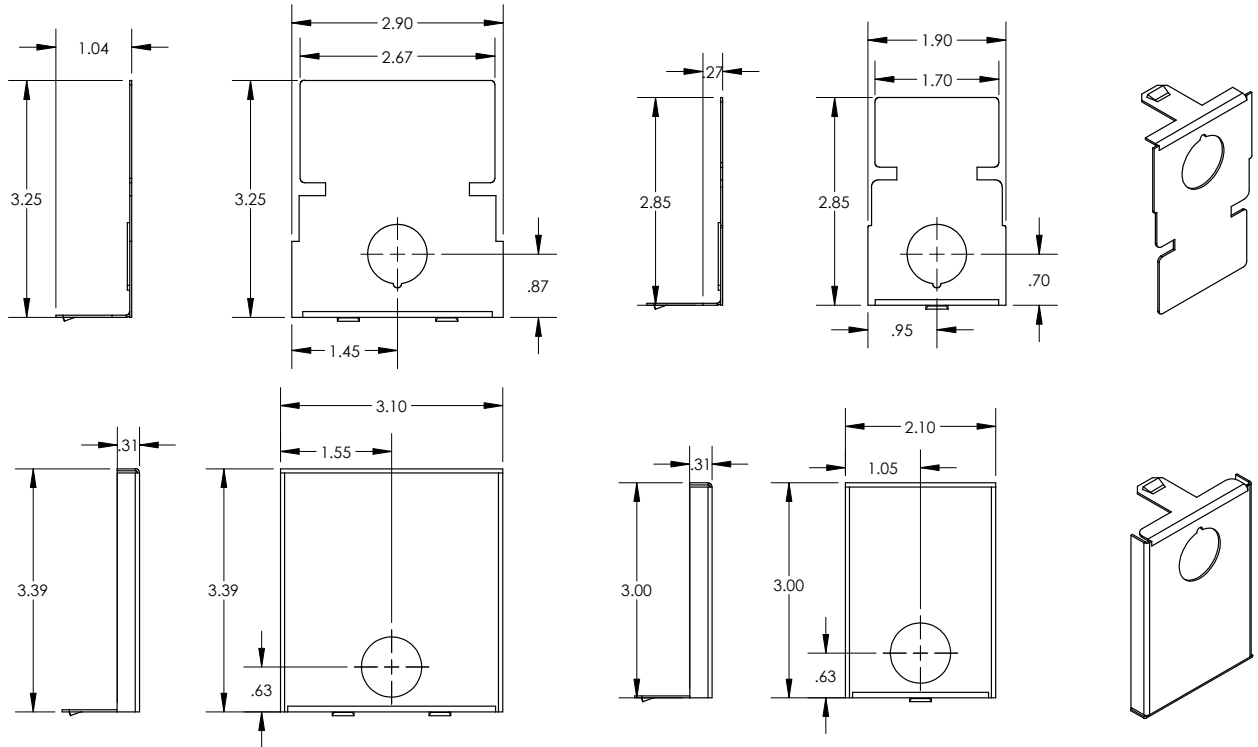
**MAX3FR96L / RDX3FR96L**



**DRAWINGS & IMAGES**

Endcaps

**MAX Endcaps**



**RDX Endcaps**

