

JOB NAME:

CAT#:

TYPE:

## APPLICATIONS

Introducing the Mobern VWN-LED Premium grade enclosed and gasketed vaportight fixture. This Energy-Saving High Performance LED Vaportight is ideal for both indoor and outdoor applications where dust and water resistance is required. Ideal for parking garages, cold storage, marinas, barns, canopies, car washes, poultry farms, agricultural applications and other areas susceptible to corrosive and wet conditions.

High quality enclosed fiberglass fixture features a unique continuous poured gasket which completely fills channel for maximum seal integrity. Diffuser is held in place with POM retaining latches. Stainless steel latches are recommended for the following applications: agriculture, car washes, food processing and swimming pools. Hole is 7/8" diameter and is provided with a plastic plug on one end for conduit attachment. Offset mounting pads which keeps luminaire level and slightly off of mounting surface are formed within the housing. Standard diffuser is high impact acrylic with textured pattern designed for high efficiency while providing reduced glare.



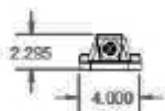
## FEATURES & BENEFITS

- Designed for easy assembly
- Ease of Installation and Maintenance
- Visually familiar light sourcing
- Poured in place gasket seals the enclosures from most hostile environments
- Economical Mounting System can provide dramatic savings on installation labor, thus reducing costs
- Very tough diffusers resist breakage and reduce replacement and maintenance costs
- Available in 4' length only
- Frosted lens for reducing direct glare and image of the LED
- Optional durable stainless steel mounting hardware
- No need to drill through the housing for installation
- Optional stainless steel bail for chain/cable hung installations
- Consult for other options

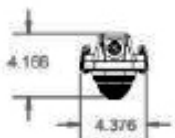


## DIMENSIONS

### Housing Only

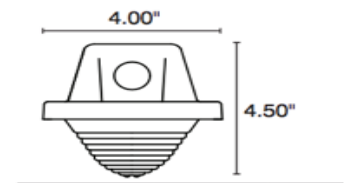


### RC/RF Lens



### End View

RC-Ribbon, Clear  
RF-Ribbon, Frosted  
SC-Smooth, Clear\*  
SF-Smooth, Frosted\*  
\*Increase depth by 0.25"



Lumens are subject to a tolerance  $\pm 10\%$

Wattage is approximate and subject to a tolerance of  $\pm 5\%$

Dimensions and specifications subject to change without notice.



**JOB NAME:**
**CAT#:**
**TYPE:**
**ORDERING**

EXAMPLE: VWN 4 LED 24 DMV RF 30 EM OS CS PC120 SL

VWN		LED										
1. SERIES	2. SIZE	3. GEAR	4. WATTAGE/LUMENS		5. DRIVER		7. LENS MATERIAL		8. LENS		9. COLOR TEMP	
VWN LED Vaportight	4 4 ft	LED	24	24W 2800 Lumens	DMV	120-277V Multivolt 0-10V Dimmable	Blank	High Impact Acrylic P Polycarbonate	RF	Ribbed Frosted Deep	30	3000K
			35	23W 4100 Lumens							35	3500K
			42	42W 4700 Lumens							40	4000K
			48	48W 5600 Lumens							50	5000K
			55	55W 6400 Lumens								
			*consult for other wattages		SDMV	Step dimming Multivolt			SF	Smooth Frosted Deep <sup>2</sup>		
				D347V	347VAC 0-10V Dimming			SC	Smooth Clear Deep <sup>2</sup>			
				D120	Triac Dimming 120VAC							
				D277	Triac Dimming 277VAC							

10. EM (O) <sup>4</sup>		11. SENSOR (O) <sup>3</sup>		12. CORD (O) <sup>3</sup>		13. PHOTOCELL (O) <sup>3</sup>		14. LATCH (O) <sup>3</sup>	
EM	Emergency Battery Pack 10W ~ 1700 lumens	OS	Occupancy Sensor	CS	Cord 1/3 6"	PC120	Photocell 120V	SL	Stainless Steel Latches
EM-CW	Emergency Battery Pack 10W Cold Weather	OSW	Occupancy Sensor - Wet Location			PC277	Photocell 277V		
EM5	Emergency Battery Pack 5W ~ 850 Lumens	OSC	Occupancy Sensor Cold Temperature						
		OSD	Occupancy Sensor - 0-10V Dimmable						
		SS	Occupancy Sensor - Internal Microwave						

\*See chart below for whip & cord ordering options

**\*Cord & Whip Ordering Chart (Add to End of Fixture Part Number)**

Part No.	# of Wires	Length	End Fitting	Finish	Voltage	Amps (TL Only)
WP - Whip CS - Cordset	(Blank) 3 Wire 4 - 4 Wire 5 - 5 Wire 6 - 6 Wire	(Blank) 6 feet 8 - 8 feet 10 - 10 feet 12 - 12 feet 15 - 15 feet	(Blank) No Plug P* - Standard Plug TL* - Twist Lock	BK - Black WH - White	(Blank) 120-277V 120 - 120V 277 - 277V 347 - 347V 480 - 480V	15 - 15 Amps 20 - 20 Amps

**ACCESSORIES**
**VW-MB1L** Mounting basket (1) 2 required

**Notes:**
<sup>1</sup>Consult for other wattages

<sup>2</sup>Not available in polycarbonate

<sup>3</sup>(O) is optional

Lumens are subject to a tolerance ±10%

Wattage is approximate and subject to a tolerance of ±5%

Dimensions and specifications subject to change without notice.

