



JOB NAME:

CAT#:

TYPE:

APPLICATIONS

MOBERN'S SAL SR area light is a highly efficient, long life, low profile wet location rated luminaire that provides uniform illumination that is perfect for auto dealerships, parking lots, walkways, roadways, campuses, facade lighting, grocery stores and other public areas.

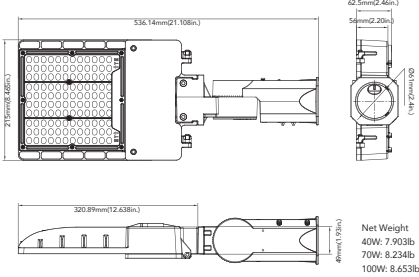
FEATURES & BENEFITS

- One piece die-cast aluminum housing with outstanding corrosion protection
- UV resistant polycarbonate optical lens
- Round pole and square pole mounting, direct wall mounting, slipfitter
- Long lasting L70 ≥ 50,000 hrs
- IP66 rated
- Operated temperature range: -40°C to 45°C (-40°F to 113°F)
- Type III distribution standard
- cUL_{US} Wet Location listed

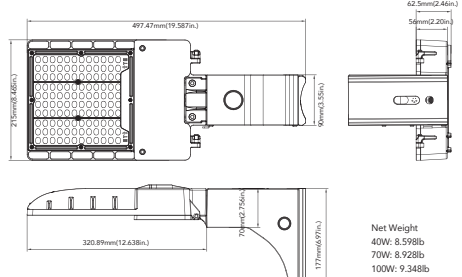


DIMENSIONS

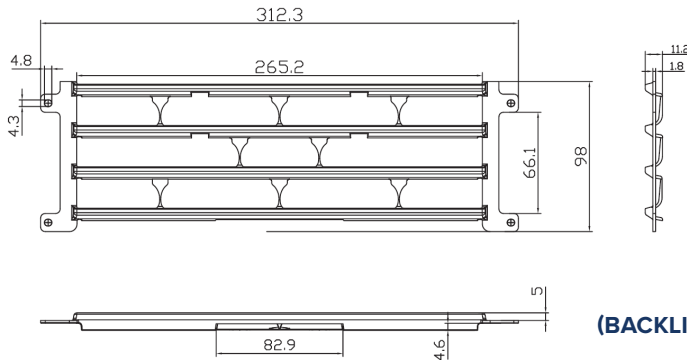
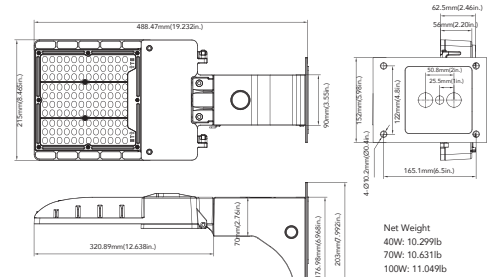
40W/70W/100W (Slipfitter Mount)



40W/70W/100W (Pole Mount)



40W/70W/100W (Wall Mount)



(BACKLIGHT CONTROL)

Dimensions and specifications subject to change without notice.

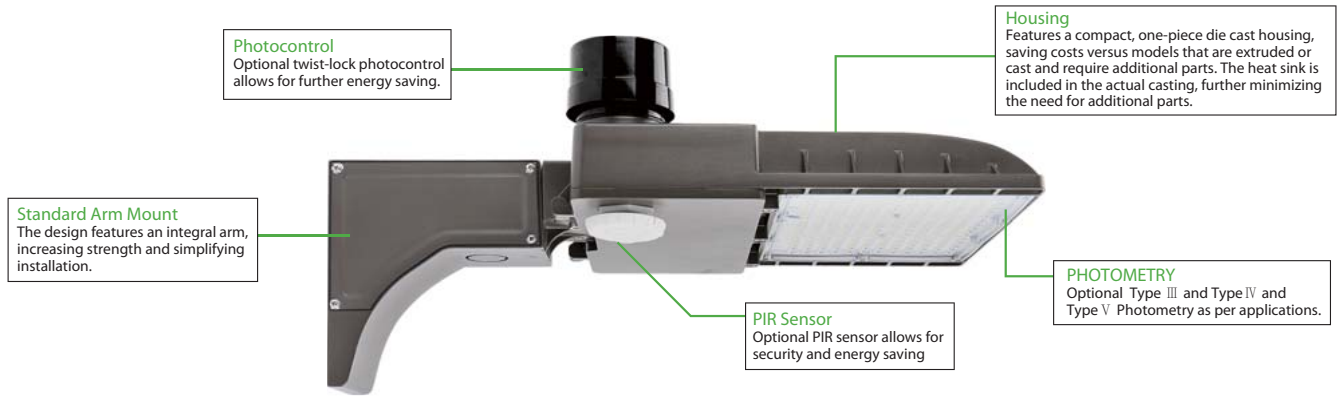




JOB NAME:

CAT#:

TYPE:



ORDERING

EXAMPLE: SAL SR 12 LED 70 DMV 40 SP

SAL SR		LED										
1. SERIES	2. SIZE	3. DISTRIBUTION	4. GEAR	5. WATTAGE/LUMENS			6. DRIVER	7. FINISH		8. COLOR TEMP		
SAL SR Area Light	12 12"	Blank Type 3	LED	40	40 Watts	5500 lumens	DMV	120-277V Multivolt 0-10V Dimmable	Blank	Bronze	40	4000K*
				70	70 Watts	9600 lumens			BK	Black	50	5000K
				100	100 Watts	13800 Lumens			SG	Silver/Gray		
									WH	White		

*Lumens at 5000K

9. SURGE PROTECTOR

SP Surge Protection

Notes:
*Check with your local sales person for lead time and distribution availability

DLC Listed Fixtures				
Model Number	Housing Color (hh)	Color Temp (xx)	Options	DLC Listing
SALSR12-LED40DMVhhxx	hh= Blank, BK,SG, WH	xx= 40, 50	SP	Premium
SALSR12-LED70DMVhhxx	hh= Blank, BK,SG, WH	xx= 40, 50	SP	Premium
SALSR12-LED100DMVhhxx	hh= Blank, BK, SG, WH	xx= 40, 50	SP	Premium



Dimensions and specifications subject to change without notice.



JOB NAME:

CAT#:

TYPE:

ACCESSORIES

(Field Installed)

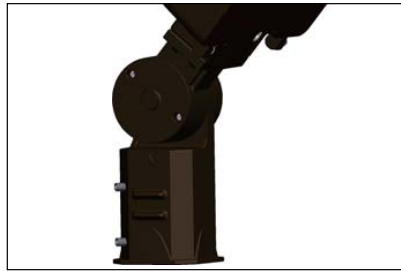
SAL-SQ-ARM	Square pole mounting arm for SAL (Bronze)
SAL-RD-ARM	Round pole mounting arm for SAL (Bronze)
SAL-SF	Slip fitter mounting for SAL (Bronze)
SAL-WALL-ARM	Wall mounting for SAL (Bronze)
SAL-SQ-ARM-PCMV	Square arm with 120-277V photocell
SAL-RD-ARM-PCMV	Round arm with 120-277V photocell
A-SC-AL01-100W-BA	Backlight control

ARM

SAL-SQ-ARM
SAL-RD-ARM



SAL-SF



SAL-WALL-ARM

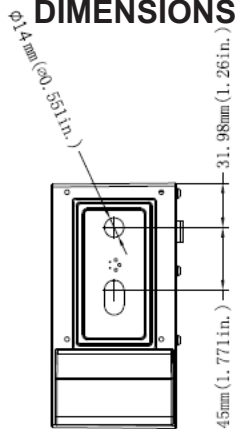


Arm Mount (4" and 5" Square & Round Poles)
Standard versatile mounting arm is simple to install and can be used with existing poles for retrofit installation.

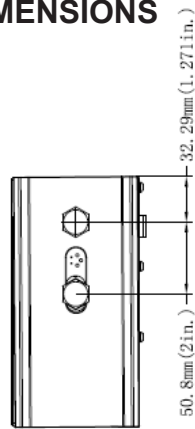
Slipfitter Mount
An optional cast aluminum mast arm adapter secures fixture head to nominal 2" (2-3/8" O.D. pipe size) horizontal tenon arm.

Wall Mount
Wall mount is easy to install for direct wall mounting with 1/2" conduit wiring or standard J-box mounting.

SAL-SQ-ARM
DIMENSIONS



SAL-RD-ARM
DIMENSIONS



Dimensions and specifications subject to change without notice.





JOB NAME:

CAT#:

TYPE:

EPA OF AREA LIGHT

Item							
	1	2 @90°	2 @120°	2@180°	3 @90°	3 @120°	4 @90°
40W/70W/100W	0.3413	0.5929	0.7983	0.6826	1.0239	1.0499	1.0239

Dimensions and specifications subject to change without notice.

