



JOB NAME:

CAT#:

TYPE:

APPLICATIONS

Give your area a new clean and sleek look with this designer series retrofit solution. This fixture is sure to enhance any environment. Designed to convert your old 4' or 8' T12 or T8 linear or industrial fixtures with New LED Technology. This retrofit kit is cost effective and makes this a perfect lighting solution for: schools, retail, warehouses, storage or any other facility area currently using fluorescent fixtures.

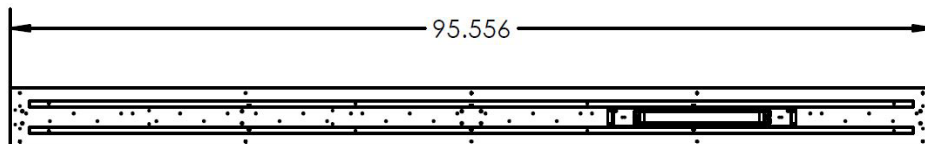
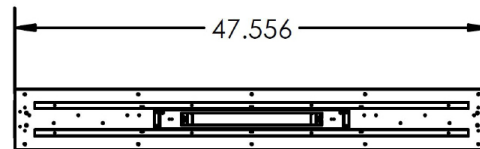
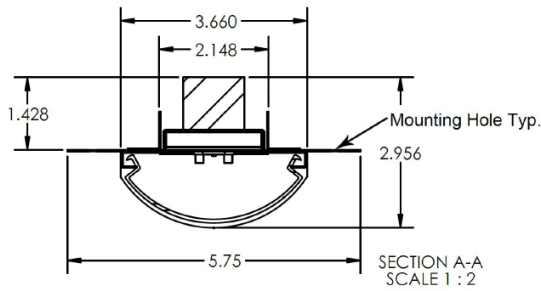
FEATURES & BENEFITS

- Easily row mounted
- Size: 4FT: 4.5"W x 48"L
8FT: 4.5"W x 95.87"L
- Min CRI 82
- PF ≥ .9
- THD ≤ 20%
- 0-10V Dimmable



DIMENSIONS

Dimensions In Inches



Dimensions and specifications subject to change without notice.





JOB NAME:

CAT#:

TYPE:

ORDERING

EXAMPLE: RKITB 48 LED 22 DMV FR 30 EM

RKITB		LED						
1. SERIES	2. DISTRIBUTION	3. SIZE	4. GEAR	5. WATTAGE/LUMENS	6. DRIVER	7. LENS	8. COLOR TEMP	
RKITB Retail Recessed LED Retrofit Kit	Blank Individual	48 47.87	LED	48 in.		DMV 120-277V Multivolt 0-10V Dimmable	FR Frosted	30 3000K
	CR Continuous Run	96 95.87		22 22 Watts 2682 Lumens	35 3500K			
				24 24 Watts 3475 Lumens	40 4000K			
				30 30 Watts 4310 Lumens	50 5000K			
				35 35 Watts 4920 Lumens				
				48 48 Watts 6475 Lumens				
				57 57 Watts 7755 Lumens				
				97 97 Watts 13580 Lumens				
				96 in.				
				24 24 Watts 3475 Lumens				
		44 44 Watts 5358 Lumens						
		48 48 Watts 6475 Lumens						
		57 57 Watts 7755 Lumens						
		70 70 Watts 9840 Lumens						
		97 97 Watts 12950 Lumens						
		118 118 Watts 15510 Lumens						
		166 166 Watts 24000 Lumens						

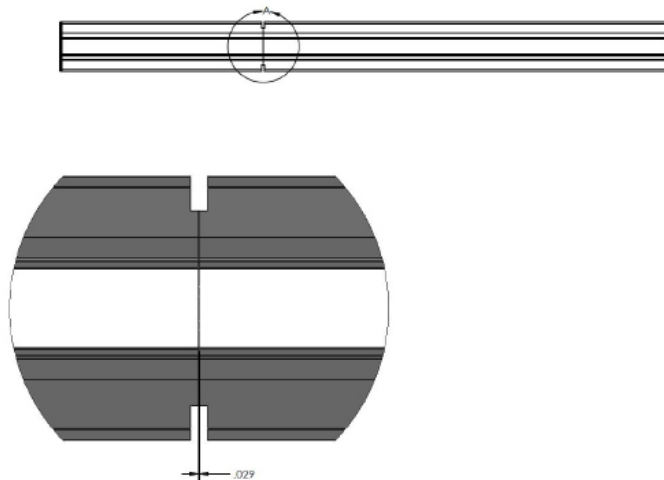
9. EM

EM Emergency
Battery Backup

DLC LISTED
RKITB48-LED22DMVFR35
RKITB48CR-LED22DMVFR35
RKITB96-LED44DMVFR35
RKITB96CR-LED44DMVFR35



ROW MOUNTING CONNECTION



Dimensions and specifications subject to change without notice.

