

**JOB NAME:**
**CAT#:**
**TYPE:**

## APPLICATIONS

The FHBC LED is a high efficiency premier high bay fixture engineered for premium performance. A precision-formed reflector system available in enhanced white reflector is designed to achieve maximum light output for ceilings from 15 feet to 40 feet. Based on ceiling height, these fixtures can replace a fluorescent or traditional HID high bay while using 50% or less energy. Pendant, chain or stem mounting are available. The fixture is ideal suited for warehouses, manufacturing plants, sports facilities and retail spaces.

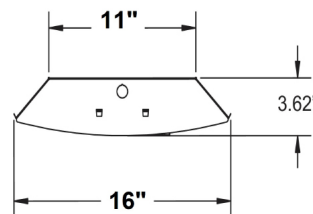
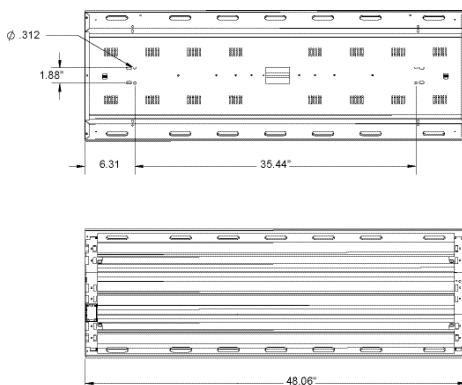
Housing is 22 gauge painted steel. Access plate in the back makes wiring fast and hassle-free. Back of fixture is designed with built in mounting holes for tong hanger or cable kit. The fixture is not designed to be surface mounted to the ceiling or wall. Integral Occupancy Sensor is optional and is ideal for wire guard applications.



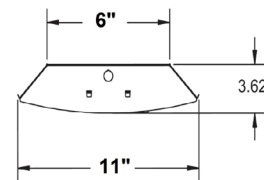
## FEATURES & BENEFITS

- 0-10V Dimming Driver standard
- Pendant, stem, cable, or chain hanging available
- Options and accessories include: Wireguard, lens, occupancy sensors, emergency packs and more
- Warranted up to 45°C ambient temperature. Consult for higher temp ratings.
- $L_{70} > 100,000$  hrs.
- Min CRI 82
- cETL<sub>US</sub> Listed

## DIMENSIONS



(2NR Narrow Option)



Dimensions and specifications subject to change without notice.





**JOB NAME:**

**CAT#:**

**TYPE:**

**ORDERING**

EXAMPLE: FHBC 24 LED 48 DMV 30 EM5 OS WG

FHBC		LED					
1. SERIES	2. LENGTH	3. GEAR	4. WATTAGE/LUMENS	5. DRIVER	6. COLOR TEMP	7. EMERGENCY(O) <sup>1</sup>	
FHBC	24 24"	LED	<b>High Performance</b>		DMV 120-277V Multivolt 0-10V Dimmable	30 3000K	EM5 5 Watt Battery Backup
	48 48"		<b>24 in.</b>			35 3500K	
			48 48 Watts 6400 Lumens	D480TF 480V with transformer 0-10V Dimming	40 4000K	EM 10 Watt Battery Backup	
			57 57 Watts 7640 Lumens		50 5000K	EM12 12 Watt Battery Backup	
			63 63 Watts 9000 Lumens				
			72 72 Watts 10440 Lumens				
			90 90 Watts 12060 Lumens				
			100 100 Watts 13480 Lumens				
			114 114 Watts 16000 Lumens				
			144 144 Watts 19000 Lumens				
			<b>48 in.</b>				
			57 57 Watts 8000 Lumens				
			97 97 Watts 13795 Lumens				
			114 114 Watts 17560 Lumens				
			127 127 Watts 18000 Lumens				
			144 144 Watts 21305 Lumens				
			162 162 Watts 24000 Lumens				
			166 166 Watts 25150 Lumens				
			180 180 Watts 26855 Lumens				
			195 195 Watts 28410 Lumens				
			208 208 Watts 31440 Lumens				
			216 216 Watts 30000 Lumens				
			270 270 Watts 40285 Lumens				
			272 272 Watts 36000 Lumens				

8. SENSOR(O) <sup>1</sup>	9. WIRE GUARD(O) <sup>1</sup>	10. WIDTH OPTION(O) <sup>1</sup>
OS Occ Sensor -On/Off	WG Wraparound Wireguard	2NR Narrow option (97w and under only)
OSD Occ Sensor w/ Dimming & Daylight Harvesting		
DH Daylight Harvesting		

*Cord & Whip Ordering Chart (Add to End of Fixture Part Number)						
Part No.	# of Wires	Length	End Fitting	Finish	Voltage	Amps (TL Only)
WP - Whip CS - Cordset	(Blank) 3 Wire 4 - 4 Wire 5 - 5 Wire 6 - 6 Wire	(Blank) 6 feet 8 - 8 feet 10 - 10 feet 12 - 12 feet 15 - 15 feet	(Blank) No Plug P* - Standard Plug TL* - Twist Lock	BK - Black WH - White	(Blank) 120-277V 120 - 120V 277 - 277V 347 - 347V 480 - 480V	15 - 15 Amps 20 - 20 Amps

**NOTES:**

<sup>1</sup>(O) is optional  
Dimensions and specifications subject to change without notice.



**JOB NAME:**

**CAT#:**

**TYPE:**

**ACCESSORIES**

- L1080** FHBC Lens Wraparound for 48" Body-Clear
- L1080-2FT** FHBC Lens Wraparound for 24" Body-Clear
- L1080-FR** FHBC Lens Wraparound for 48" Body-Frosted
- L1080-2FT-FR** FHBC Lens Wraparound for 24" Body-Frosted
- A-FHBC6WG** Wireguard - No door frame for 48" Body
- A-FHBC6WG-2FT** Wireguard - No door frame for 24" Body

**MOUNTING**

- A144-XX** Footage - Tong hangers, End Mount (Pair) with footage of chain (xx=footage of chain)
- AC120-Toggle-2PK** yhook - 10' Cable Mounting Kit and 2 Spring Clips
- AC180-Toggle-2PK** yhook - 15' Cable Mounting Kit and 2 Spring Clips

**DLC INFORMATION**

DLC Premium	
FHBC48-LED114DMVxx	xx = Color Temp 35, 40, 50
FHBC48-LED144DMVxx	xx = Color Temp 35, 40, 50
FHBC48-LED166DMVxx	xx = Color Temp 35, 40, 50
FHBC48-LED180DMVxx	xx = Color Temp 35, 40, 50
FHBC48-LED195DMVxx	xx = Color Temp 35, 40, 50



Dimensions and specifications subject to change without notice.