



JOB NAME:

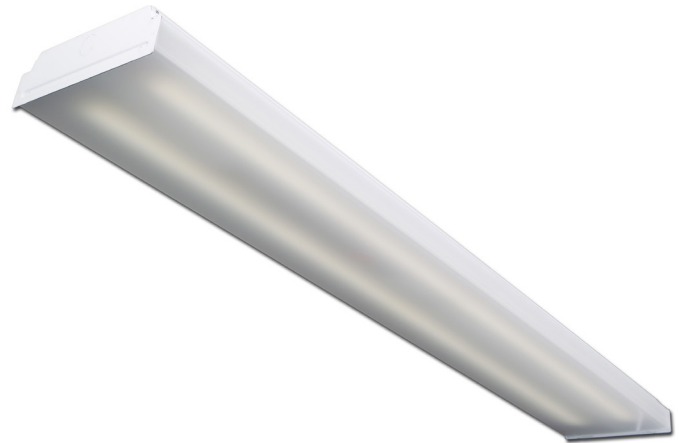
CAT#:

TYPE:

### APPLICATIONS

A shallow economy designed 7" wraparound LED luminaire available in either two or four foot lengths that is maintenance free and has a low initial cost. This series also delivers excellent brightness control and is suitable for individual or continuous run installations.

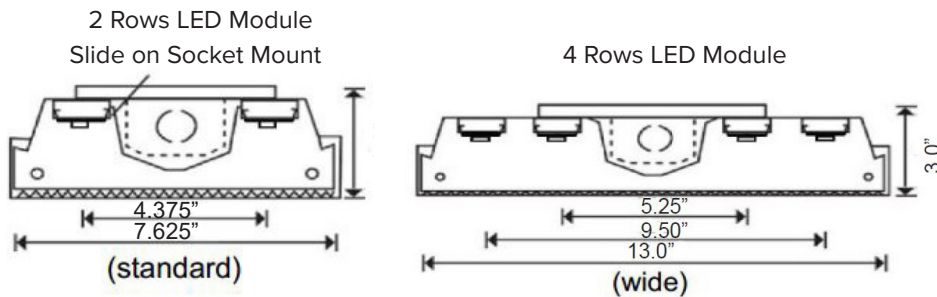
Completely die formed from heavy gauge cold rolled steel. A crystal clear diffuser extruded from 100% virgin acrylic that will maintain it's color under normal conditions, indefinitely. Linear prisms on the interior side walls direct the light ceilingwards. The bottom is composed of an evenly spaced pattern of conical prisms yielding low brightness, glare-free, diffused light.



### FEATURES & BENEFITS

- Low initial cost, maintenance free, excellent brightness control
- Design embossed ends are locked and secures to the housing
- Suitable for individual or continuous run installations
- Min CRI 82
- cETL<sub>us</sub> Listed for damp locations

### DIMENSIONS



Dimensions and specifications subject to change without notice.





JOB NAME:

CAT#:

TYPE:

**ORDERING**

EXAMPLE: 769 24 LED 23 DMV 30 EM WP

769		LED				
1. SERIES	2. SIZE	3. WIDTH	4. GEAR	5. WATTAGE/LUMENS	6. DRIVER	7. LENS
<b>769</b>	<b>24</b> 24" <b>48</b> 48"	<b>(Blank)</b> Standard <b>W</b> Wide	<b>LED</b>	<p><b>24"</b></p> <p><b>23</b> 23 Watts 2750 lumens <b>28</b> 28 Watts 3280 lumens <b>35</b> 35 Watts 4330 lumens</p> <p><b>24" wide</b></p> <p><b>32</b> 32 Watts 3760 lumens <b>48</b> 48 Watts 5700 lumens <b>57</b> 57 Watts 6500 lumens</p> <p><b>48"</b></p> <p><b>23</b> 23 Watts 2930 lumens <b>35</b> 35 Watts 4370 lumens <b>48</b> 48 Watts 5750 lumens <b>56</b> 56 Watts 6570 lumens</p> <p><b>48"wide</b></p> <p><b>65</b> 65 Watts 8100 lumens <b>97</b> 97 Watts 11500 lumens <b>114</b> 114 Watts 13140 lumens</p>	<b>DMV</b> 120-277V Multivolt 0-10V Dimmable	<b>(Blank)</b> Clear Prismatic <b>SW</b> Smooth White
					Consult factory for Step Dimming Options	

8. COLOR TEMP	9. EM	10. CORD
<b>30</b> 3000K	<b>EM</b> 10W ~1200 Lumen Battery backup	<b>WP</b> 6' Whip 3 Wire
<b>35</b> 3500K		
<b>40</b> 4000K	<b>EM7</b> 7W ~840 Lumen Battery backup	
<b>50</b> 5000K	<b>EM5</b> 5W ~600 Lumen Battery backup	

*Cord & Whip Ordering Chart (Add to End of Fixture Part Number)						
Part No.	# of Wires	Length	End Fitting	Finish	Voltage	Amps (TL Only)
WP - Whip CS - Cordset	(Blank) 3 Wire 4 - 4 Wire 5 - 5 Wire 6 - 6 Wire	(Blank) 6 feet 8 - 8 feet 10 - 10 feet 12 - 12 feet 15 - 15 feet	(Blank) No Plug P* - Standard Plug TL* - Twist Lock	BK - Black WH - White	(Blank) 120-277V 120 - 120V 277 - 277V 347 - 347V 480 - 480V	15 - 15 Amps 20 - 20 Amps

**ACCESSORIES**

Lumens are subject to a tolerance of ±10% and not relevant to RGB  
Input wattage can vary depending on options  
Dimensions and specifications subject to change without notice.

Dimensions and specifications subject to change without notice.

