



JOB NAME:

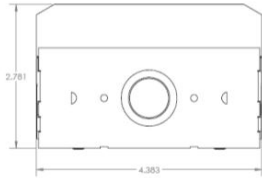
CAT#:

TYPE:

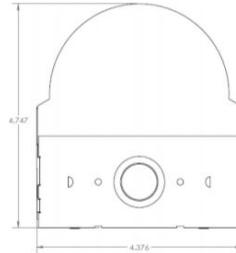
DIMENSIONS

Side View

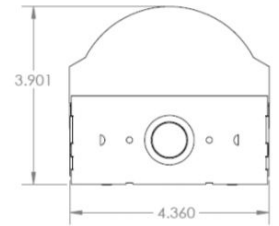
44RSF



44RSD



44RSR



ORDERING

EXAMPLE: 44RSF 48 LED 41 DMV 35

LED

1. SERIES	2. LENGTH	3. GEAR	4. WATTAGE/LUMENS	5. DRIVER	6. COLOR TEMP	7. EMERGENCY (O) ¹	
44RSF LED Strip Flat Lens	48 48" long	LED	30 30 Watts 3529 Lumens	DMV 120-277V Multivolt 0-10V Dimmable	30 3000K	EM Emergency Battery Pack 10W ~1300 Lumens	
44RSD LED Strip Dome Lens	96 96" long		41 41 Watts 4317 Lumens		D347V 347VAC 0-10V Dimming		35 3500K
44RSR LED Strip Round Lens		58 58 Watts 6717 Lumens		40 4000K			
		60 60 Watts 6952 Lumens		50 5000K			
		82 82 Watts 8786 Lumens					
			116 116 Watts 13434 Lumens				

8. SENSOR (O)¹

- OS** Occupancy Sensor
- OSD** Occupancy Sensor w/ daylight harvesting and dimming

9. CORD (O)¹

- CS** 6' cord 18/3
- WP** 6' whip 3 wire MC

*See cord & whip ordering chart below

*Cord & Whip Ordering Chart (Add to End of Fixture Part Number)						
Part No.	# of Wires	Length	End Fitting	Finish	Voltage	Amps (TL Only)
WP - Whip CS - Cordset	(Blank) 3 Wire 4 - 4 Wire 5 - 5 Wire 6 - 6 Wire	(Blank) 6 feet 8 - 8 feet 10 - 10 feet 12 - 12 feet 15 - 15 feet	(Blank) No Plug P* - Standard Plug TL* - Twist Lock	BK - Black WH - White	(Blank) 120-277V 120 - 120V 277 - 277V 347 - 347V 480 - 480V	15 - 15 Amps 20 - 20 Amps

ACCESSORIES

A144-2 (2)V-hooks and (2) 2 ft chains

Notes:

¹(O) is optional

Lumens are subject to a tolerance of ±10% and not relevant to RGB
Input wattage can vary depending on options
Dimensions and specifications subject to change without notice.