



JOB NAME:

CAT#:

TYPE:

### APPLICATIONS

A linear wall wash fixture for distinctive architectural lighting plans. Ideal for lobbies, bathroom and office areas. MW4A Series fixtures can be installed individually or in continuous runs.

Die-formed and welded 22 gauge cold rolled steel. Knockouts on ends allow continuous wireway mounting. A 1/2" regressed flange at the bottom insures uniformity and rigidity. The housing provides uniform ambient uplight for ceiling illumination.

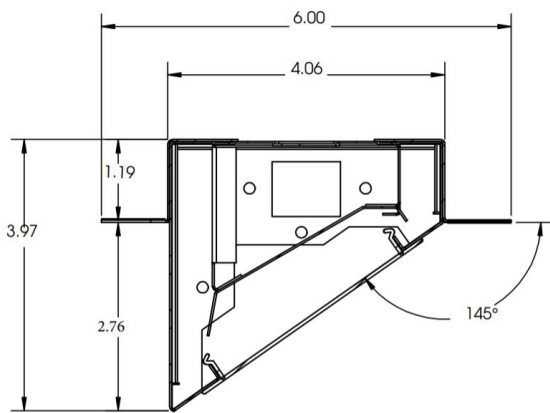


### FEATURES & BENEFITS

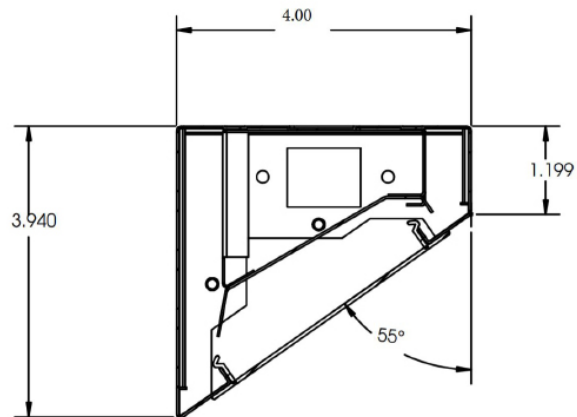
- Die-formed and welded 22-gauge cold rolled steel
- Knockouts on ends allow continuous wireway mounting
- Fixture accepts various lenses or louvers (sold separately) 4' and 8' units have a steel mullion to join two individual diffusers
- Fixtures can be semi-recessed, surface mounted to the ceiling, or pendant hung by stem or cable
- IC Rated
- cETL<sub>US</sub> Listed

### DIMENSIONS

**Recess Mounted**



**Surface Mounted**



**SIZE: W x L x H in inches**

2ft. - 4"W x 24"L x 4"H

4ft. - 4"W x 48"L x 4"H

8ft. - 4"W x 96"L x 4"H

Dimensions and specifications subject to change without notice.





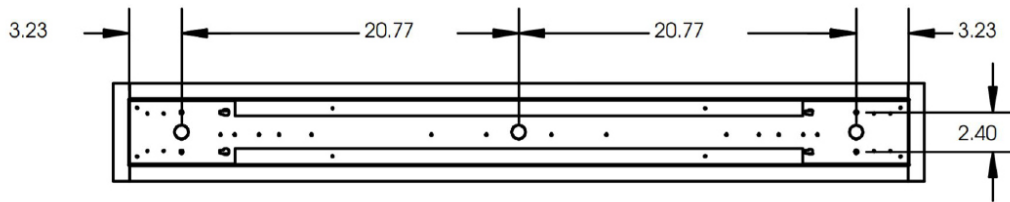
JOB NAME:

CAT#:

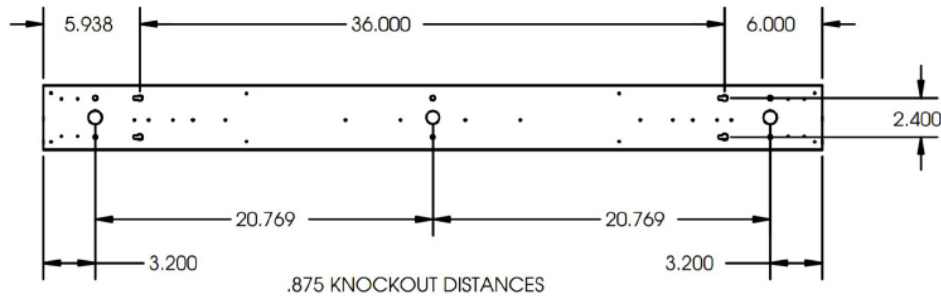
TYPE:

**DIMENSIONS**

**4ft. Recess Mounted**



**4ft. Surface Mounted**



Dimensions and specifications subject to change without notice.





JOB NAME:

CAT#:

TYPE:

**ORDERING**

EXAMPLE: MW4A R 24 LED 12 DMV BK SF 30 PI1

MW4A		LED								
1. SERIES	2. MOUNTING	3. LENGTH	4. GEAR	5. WATTAGE/LUMENS	6. DRIVER	7. FINISH	8. LENS			
<b>MW4A</b>	<b>R</b> Recess Mount	<b>24</b> 24"	<b>LED</b>	<b>2 ft.</b>		<b>DMV</b> 120-277V Multivolt 0-10V Dimmable	<b>BK</b> Black	<b>SF</b> Snap-in Frosted Acrylic Lens (85% transmission)		
	<b>S</b> Surface Mount	<b>48</b> 48"		<b>12</b> 12 Watts 1200 Lumens	<b>SDMV</b> Step dimming Multivolt				<b>SI</b> Silver	
		<b>96</b> 96"		<b>24</b> 24 Watts 2400 Lumens		<b>DHV</b> Lutron Driver <b>D347V</b> 347VAC 0-10V Dimming	<b>WH</b> White			
				<b>48</b> 48 Watts 4800 Lumens	<b>D120</b> Triac Dimming 120VAC					
			<b>8 ft.</b>	<b>96</b> 96 Watts 9600 Lumens	<b>D277</b> Triac Dimming 277VAC					

9. COLOR TEMP	10. CONTINUOUS RUN WIRING OPTIONS(O) <sup>1</sup>	9. CONFIGURATION
<b>30</b> 3000K	<b>PI1</b> 3 wire harness, including white black, and green (normally for non-dim applications)	<b>Blank</b> Individual
<b>35</b> 3500K		<b>-B</b> Beginner Run
<b>40</b> 4000K	<b>PI2</b> 4 wire harness, including white, black, green, and blue for emergency battery backup (normally for emergency circuit)	<b>-E</b> Ender Run
<b>50</b> 5000K		<b>-J</b> Joiner Run
	<b>PI3D</b> 5 wire harness, including white, black, green, violet, and gray (normally for 0-10V dimming)	
	<b>PI4D</b> 6 wire harness (normally for 0-10V dimming and emergency)	

**ACCESSORIES**

Lumens are subject to a tolerance of ±10% and not relevant to RGB  
 Input wattage can vary depending on options  
 Dimensions and specifications subject to change without notice.

**Notes:**  
<sup>1</sup>O is Optional



Dimensions and specifications subject to change without notice.