

## Series 66

### LED Linear Pendant 6" X 6" (Direct and Indirect; Direct or Indirect)

This spec-grade geometric (6" X 6" as either Direct and Indirect, or one or the other) fixture is ideal for general or perimeter lighting applications where a bolder size is required and can be installed individually or in group patterns. Specially designed for dedicated direct light, indirect light or both (indirect allows a snap-in lens to hide the lamps or LED arrays). Ideal for corridors, lobbies, and office areas, etc.

#### CONSTRUCTION

Die-formed and welded 22-gauge cold-rolled steel. Knockouts on ends allow continuous wireway mounting. Housing is specially designed for direct and/or indirect lighting with separating compartments for each.

#### DIFFUSERS

Fixture accepts various lenses or louvers.

#### TYPICAL OPTIONS & ACCESSORIES

Cord sets, whips, occupancy sensors, hanging kits, wire guards. Emergency battery backup options available. Contact factory for more details.



#### DIMENSIONS

4ft. - 48"L x 6"W x 6"H

8ft. - 96"L x 6"W x 6"H

Custom lengths available; contact factory


#### FEATURES & BENEFITS

- Pendant mounted; can also be surface, recess or wall mounted
- For individual use or lined up in a continuous row, resulting in a clean line of light
- Recommended for commercial & residential applications
- Custom finishes available; contact factory
- CRI: >80 standard, 90 optional
- L70: >50,000 Hours
- Dimming: 0-10V 120-277V standard, 120V ELV/TRIAC optional
- Several Kelvin temperature options (3000K, 3500K, 4000K, 5000K)
- Emergency backup options available
- Power Factor: >0.90
- Suitable for damp and dry locations
- 5-Year Warranty



### ORDER INFORMATION

Factory at your fingertips. Fill in the blanks to create your part number or create a custom configuration.

SENSOR	SERIES	LENS MATERIAL	LENGTH	W		L		DRIVER		COLOR			
				WATTAGE*	LUMENS*	WATTAGE*	LUMENS*						
<b>SS</b> Sensor - On/Off  <b>SV</b> Bi-level (xx)  <b>SD</b> Daylight Harvesting  	<b>66W</b> Wall Mount  <b>66P</b> Pendant Mount	<b>MW</b> Matte white lens (Only available for downlight)	24L 24"	<b>Up &amp; Down</b>				<b>DMV</b> 0-10V Dimming  <b>G120</b> ELV/TRIAC dimming at 120V only (only available with SS sensor)  <b>D1MV</b> 0-10V Dimming (dim to 1%)  <b>DMV(xx)</b> 0-10V Dimming (xx) for percentage of light output when not occupied. (required for SV sensor)	<b>30K</b> 3000K <b>35K</b> 3500K <b>40K</b> 4000K <b>50K</b> 5000K				
				<b>UR6WD12W</b>	Uplight 6 Watts Downlight 12 Watts 3600 Lumens								
				<b>UR9WD18W</b>	Uplight 9 Watts Downlight 18 Watts 5400 Lumens								
				<b>Up or Down Light Only</b>									
				<b>R12W1200L</b>	12 Watts 1200 Lumens								
				<b>R24W2400L</b>	24 Watts 2400 Lumens								
					48L 48"	<b>Up &amp; Down</b>							
						<b>UR12WD24W</b>	Uplight 12 Watts Downlight 24 Watts 3600 Lumens						
						<b>UR18WD36W</b>	Uplight 18 Watts Downlight 36 Watts 5400 Lumens						
						<b>Up or Down Light Only</b>							
						<b>R24W2400L</b>	24 Watts 2400 Lumens						
						<b>R48W4800L</b>	48 Watts 4800 Lumens						
			96L 96"	<b>Up &amp; Down</b>									
				<b>UR24WD48W</b>	Uplight 24 Watts Downlight 48 Watts 7200 Lumens								
				<b>UR36WD72W</b>	Uplight 36 Watts Downlight 72 Watts 10800 Lumens								
				<b>Up or Down Light Only</b>									
				<b>R48W4800L</b>	48 Watts 4800 Lumens								
				<b>R96W9600L</b>	96 Watts 9600 Lumens								

### Additional Options

CRI**	FINISH	CONFIGURATIONS	OPTIONS
Blank 80 CRI 90 90 CRI	WH White BK Black SI Silver	Blank Individual B Beginner Run E Ender Run J Joiner	<b>HC301WH</b> Cable kit with 4' cable & 3 wires power feed/cable incl. and white canopy <b>HC302WH</b> Cable kit with 12' cable & 3 wires power feed/cable incl. and white canopy <b>HC3015WWH</b> Cable kit with 4' cable & 5 wires power feed/cable incl. and white canopy <b>HC3025WWH</b> Cable kit with 12' cable & 5 wires power feed/cable incl. and white canopy <b>HC3016WH</b> Cable kit with 4' cable & 6 wires power feed/cable incl and white canopy <b>HC3026WH</b> Cable kit with 12' cable & 6 wires power feed/cable incl and white canopy <b>2SCS24WH</b> Two stem kits with 24" stem, canopy and mounting hardware for a 4' fixture <b>EM</b> 10W Emergency battery backup (internal, excludes less than 4ft) <b>EM12</b> 12W Emergency battery backup (internal, excludes less than 4ft) <b>EM20</b> 20W Emergency battery backup (remote only)

Note:

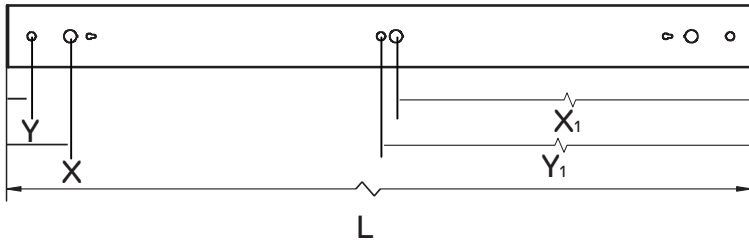
\*Programmable LED drivers allow custom configured wattages and corresponding lumens.

\*\*Consult factory for 90CRI 5000K availability.

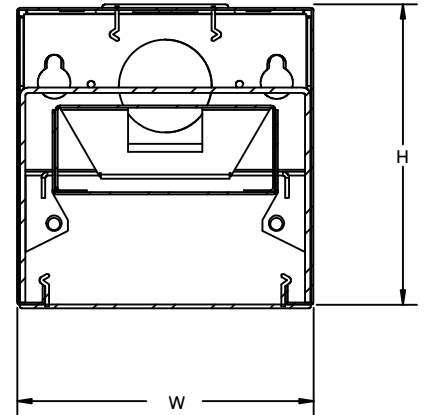
We reserve the right to change design, materials, LEDs and finish in any way that will not alter installed appearance or reduce function and performance.

### DRAWINGS & IMAGES

#### PENDANT MOUNT



#### End Side View



PART	L	W	H	X	Y	X <sub>1</sub>	Y <sub>1</sub>
66P12L	12.00"	6.00"	6.05"	*	*	*	*
66P24L	24.00"	6.00"	6.05"	*	*	*	*
66P36L	36.00"	6.00"	6.05"	*	*	*	*
66P48L	48.00"	6.00"	6.05"	4.00"	1.50"	23.00"	24.00"
66P60L	60.00"	6.00"	6.05"	*	*	*	*
66P72L	72.00"	6.00"	6.05"	*	*	*	*
66P84L	84.00"	6.00"	6.05"	*	*	*	*
66P96L	96.00"	6.00"	6.05"	4.79"	6.00"	48.97"	48.00"

L-Length  
 W-Width  
 H-Height  
 X-0.875" Knock Out Distance  
 Y-0.575" Hanging Kit Distance  
 \* - Please consult factory

#### REPLACEMENT LENS ORDERING INFORMATION

SERIES	DESCRIPTION
066PSF24L	Replacement Snap-in Frosted lens for 24"
066PSF48L	Replacement Snap-in Frosted lens for 48"
066PSF96L	Replacement Snap-in Frosted lens for 96"



Uplight & Downlight



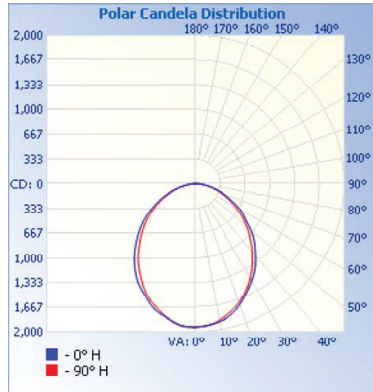
Continuous Run End



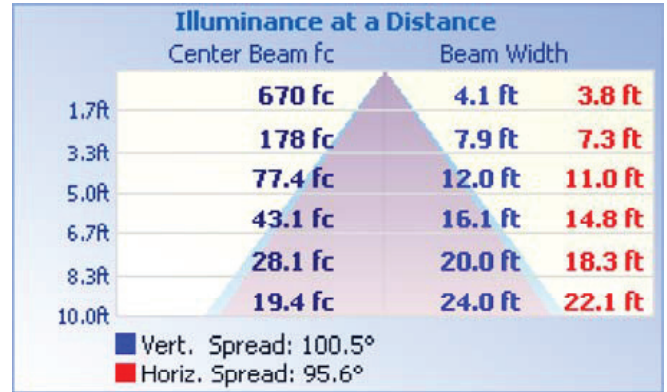
Wall/Pendant Mount

## PHOTOMETRICS

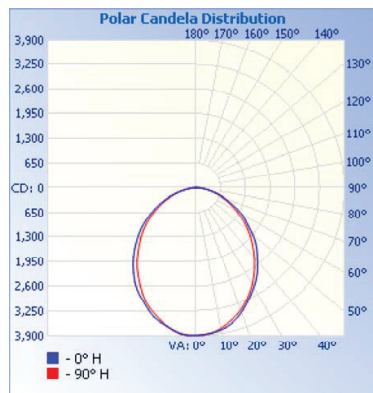
### 48L-66PSF48LR48W4800LDMV40K



Zonal Lumen Summary		
Zone	Lumens	% Luminaire
0-30	1,436.8	30.5%
0-40	2,288.0	48.6%
0-60	3,828.5	81.4%
60-90	872.7	18.6%
70-100	362.4	7.7%
90-120	2.8	0.1%
0-90	4,701.3	99.9%
90-180	2.8	0.1%
0-180	4,704.0	100%



### 96L-66PSF96LR96W9600LDMV40K



Zonal Lumen Summary		
Zone	Lumens	% Luminaire
0-30	2,886.3	30.5%
0-40	4,596.4	48.6%
0-60	7,691.2	81.4%
60-90	1,753.2	18.6%
70-100	727.9	7.7%
90-120	5.6	0.1%
0-90	9,444.4	99.9%
90-180	5.6	0.1%
0-180	9,450.0	100%

