

SSSTR/SSSTS Series

SMARTSENSE LED Wall Mount Rectangular or Half Moon Profile

FEATURES & SPECIFICATIONS

ABOUT SMARTSENSE

Our popular SSSTS/SSSTR series linear LED fixtures is now available with integral ultrasonic occupancy sensor to sense motion within a space and automatically turns on lights even when the sensor has no direct line of sight to occupants. After the area is vacated and the time delay has elapsed, the sensors automatically turn the lights off. Ultrasonic detection operates by transmitting sound waves throughout an area and measuring the speed at which they return. Movement increases the return frequency, which triggers occupancy. Texas Fluorescents Ultrasonic smartsensors provide functions for testing, overriding the fixture "ON" and a 72 hour lamp burn-in mode.

INTENDED USE

The SSSTS/SSSTR series is a specification grade wall mount for "over the bed" applications, and may also be used in bath, stairwells, and office applications. This luminaire carries up to 58 watts. The rectangular and round shape provide a clean, crisp profiles.

SIZE H x W in inches (mm)

3.44H x 4.47W

Available in 24 1/4" and 46 1/4" lengths

MOUNTING

Direct wall mount.

MATERIALS & FEATURES

Housing is die-formed and embossed code 22 gage steel. Standard finish is high reflectance baked white enamel; custom finishes are available as an option.

Wiring knockouts are provided on back of housing. The clear, ribbed lens is fully captured by the end plate. End cap held in place with acorn nut.

• CONTACT FACTORY for custom options.



Ultrasonic technology for open area detection with line-o-sight obstructions

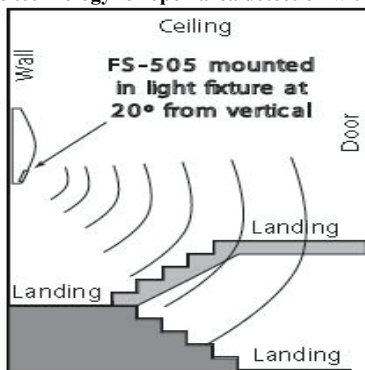
TYPICAL OPTIONS AND ACCESSORIES

Custom finishes, convenience outlets, and Emergency battery backup. CONTACT FACTORY for custom. See options page at the end of the T02WallF section, or contact factory for more details.

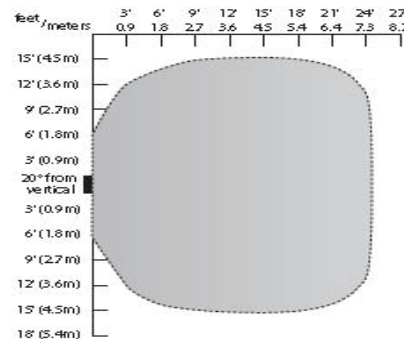
APPLICATIONS FOR SMARTSENSE

Typical applications for this SmartSense Series include open office cubicles, offices, conference rooms, restrooms and hallways. This technology also provides superior detection in hard surfaced areas, such as stairwells and hallways. Bi-level lighting control is available (consult factory for options) resulting in up to 66% energy savings for fixtures that are on 24-hours a day, seven days a week while still providing enough light for safety and egress.

Ultrasonic technology for open area detection with line-of-sight obstructions.



WIRING & COVERAGE



FS-505

FEATURES

Time Delay: 5 to 30 minutes

Coverage at 8' height; 24' diameter

*Consult factory for low wattage lamp that is always on



Texas Fluorescents
Reinvented



Ultrasonic technology for open area detection
with line-of-sight obstructions

SSSTR/SSSTS Series

SMARTSENSE
LED Wall Mount Rectangular or
Half Moon Profile



SSSTS



SSSTR

ORDERING INFORMATION

24L - STANDARD

Example: SSSTSMW24LE14W1200LSTMV40K

SSSTS	MW	24L	E14W1200L	STMV	40K
Series		Size	Wattage and Lumen	Driver	Color Temperature
SSSTS LED Smartsense Wall Mount Rectangular Profile		24L 24"	E14W1200L 14 System Watts, 1200 Delivered Lumens	STMV Step Dimming *Dimming Range 50%/100% Output current	30K 3000K 35K 3500K 40K 4000K 50K 5000K
SSSTR LED Smartsense Wall Mount Half Moon Profile	Lens Material		E27W2400L 27 System Watts, 2400 Delivered Lumens		
	MW Matt White				

48L - STANDARD

Example: SSSTSMW48LE36W3500LSTMV40K

SSSTS	MW	48L	E14W1200L	STMV	40K
Series		Size	Wattage and Lumen	Driver	Color Temperature
SSSTS LED Smartsense Wall Mount Rectangular Profile		48L 48"	E36W3500L 36 System Watts, 3500 Delivered Lumens	STMV Step Dimming *Dimming Range 50%/100% Output current	30K 3000K 35K 3500K 40K 4000K 50K 5000K
SSSTR LED Smartsense Wall Mount Half Moon Profile	Lens Material		E58W5000L 58 System Watts, 5000 Delivered Lumens		
	MW Matt White				

* Consult for more options

Saylite
2055 Luna Rd. Suite 142 Carrollton, TX 75006
Phone: 972-247-3171 Fax: 972-247-0200
www.saylite.com email: sales@saylite.com

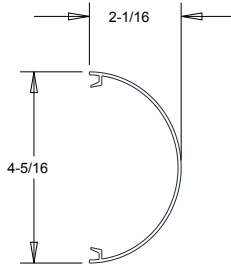
Catalog Number:

Notes:

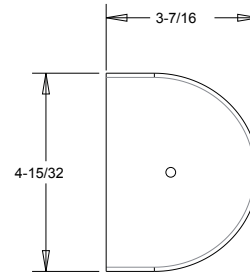
Dimensions



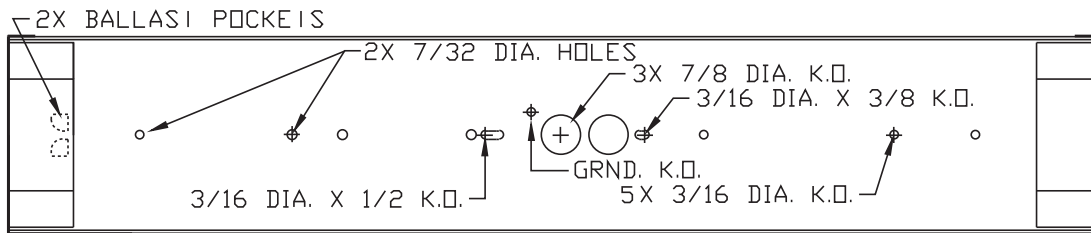
LED	
SIZE	LENGTH
(1 or 2) 22" Boards	24 ¼
(2 or 4) 22" Boards	46 ¼



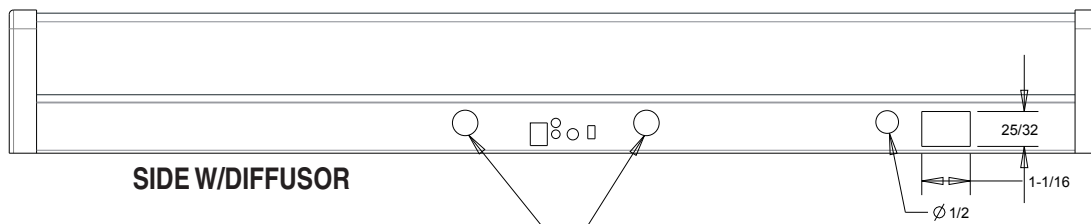
DIFFUSOR



END

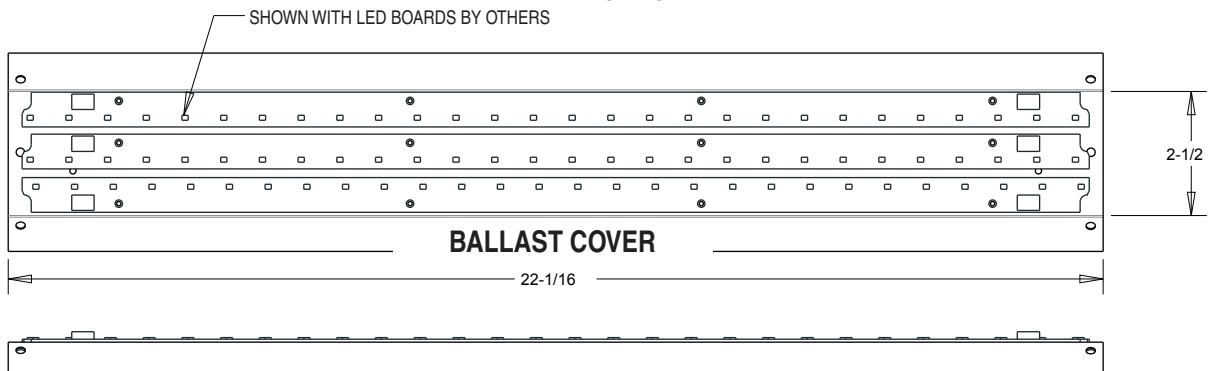


TOP



SIDE W/DIFFUSOR

OPTIONAL MOTION and SOUND

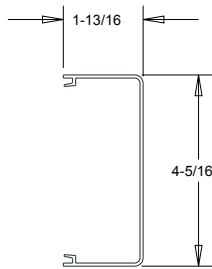




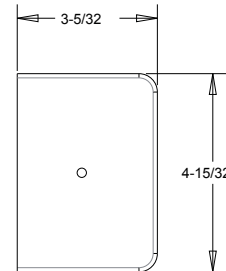
SSSTS

Dimensions

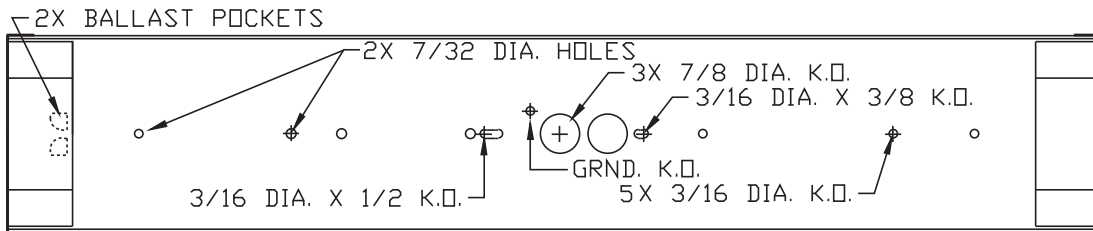
LED	
SIZE	LENGTH
(1 or 2) 22" Boards	24 ¼
(2 or 4) 22" Boards	46 ¼



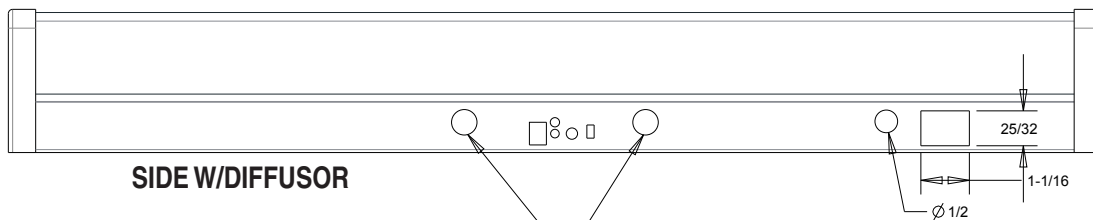
DIFFUSOR



END

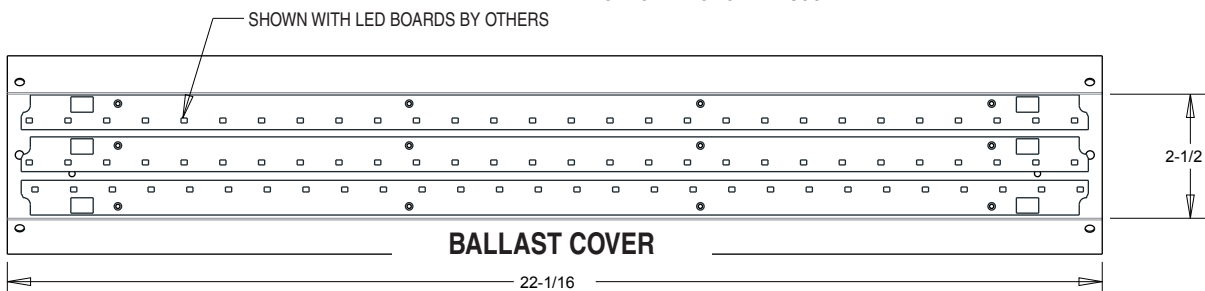


TOP



SIDE W/DIFFUSOR

OPTIONAL MOTION AND SOUND



BALLAST COVER