

# SSSTR/SSSTS Series

## SMARTSENSE LED Wall Mount Rectangular or Half Moon Profile

### FEATURES & SPECIFICATIONS

#### ABOUT SMARTSENSE

Our popular SSSTS/SSSTR series linear LED fixtures is now available with integral ultrasonic occupancy sensor to sense motion within a space and automatically turns on lights even when the sensor has no direct line of sight to occupants. After the area is vacated and the time delay has elapsed, the sensors automatically turn the lights off. Ultrasonic detection operates by transmitting sound waves throughout an area and measuring the speed at which they return. Movement increases the return frequency, which triggers occupancy. Ultrasonic smartensors provide functions for testing, overriding the fixture "ON"

#### INTENDED USE

The SSSTS/SSSTR series is a specification grade wall mount for "over the bed" applications, and may also be used in bath, stairwells, and office applications. This luminaire carries up to 58 watts. The rectangular and round shape provide a clean, crisp profiles.

#### SIZE H x W in inches (mm)

3.44H x 4.47W

Available in 24 1/4" and 46 1/4" lengths

#### MOUNTING

Direct wall mount.

#### MATERIALS & FEATURES

Housing is die-formed and embossed code 22 gage steel. Standard finish is high reflectance baked white enamel; custom finishes are available as an option.

Wiring knockouts are provided on back of housing. The clear, ribbed lens is fully captured by the end plate. End cap held in place with acorn nut.

• CONTACT FACTORY for custom options.



*Ultrasonic technology for open area detection with line-o-sight obstructions*

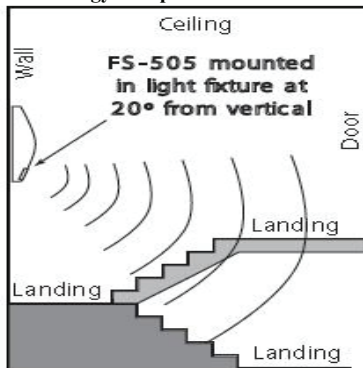
#### TYPICAL OPTIONS AND ACCESSORIES

Custom finishes, convenience outlets, and Emergency battery backup. CONTACT FACTORY for custom.

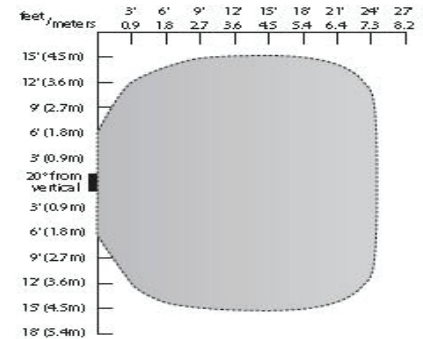
### APPLICATIONS FOR SMARTSENSE

Typical applications for this SmartSense Series include open office cubicles, offices, conference rooms, restrooms and hallways. This technology also provides superior detection in hard surfaced areas, such as stairwells and hallways. Bi-level lighting control is available (consult factory for options) resulting in up to 66% energy savings for fixtures that are on 24-hours a day, seven days a week while still providing enough light for safety and egress.

**Ultrasonic technology for open area detection with line-of-sight obstructions.**



#### WIRING & COVERAGE



**FS-505**

#### FEATURES

Time Delay: 5 to 30 minutes

Coverage at 8' height; 24' diameter

\*Consult factory for low wattage lamp that is always on



Texas Fluorescents  
Reinvented



Ultrasonic technology for open area detection  
with line-of-sight obstructions

# SSSTR/SSSTS Series

SMARTSENSE  
LED Wall Mount Rectangular or  
Half Moon Profile



SSSTS



SSSTR

## ORDERING INFORMATION

### 24L - STANDARD

Example: SSSTSMW24LE14W1200LDMV(50)40K

<b>SSSTS</b>	<b>MW</b>	<b>24L</b>	<b>E14W1200L</b>	<b>DMV(50)</b>	<b>40K</b>
<b>Series</b>	<b>Lens Material</b>		<b>Wattage and Lumen</b>	<b>Driver</b>	<b>Color Temperature</b>
SSSTS LED Smartsense Wall Mount Rectangular Profile	MW	24L 24" Matt White	<b>E14W1200L</b> 14 System Watts, 1200 Delivered Lumens  <b>E27W2400L</b> 27 System Watts, 2400 Delivered Lumens	<b>DMV 120-277 0-10V DIM</b>  <b>DMV(**) 120-277 0-10V w/ Bi-Level Dimming</b>	<b>30K</b> 3000K <b>35K</b> 3500K <b>40K</b> 4000K <b>50K</b> 5000K
SSSTR LED Smartsense Wall Mount Half Moon Profile				* Replace ** with percentage of light to remain on 24/7 10- 90 range.	

### 48L - STANDARD

Example: SSSTSMW48LE36W3500LDMV40K

<b>SSSTS</b>	<b>MW</b>	<b>48L</b>	<b>E14W1200L</b>	<b>DMV</b>	<b>40K</b>
<b>Series</b>	<b>Lens Material</b>		<b>Wattage and Lumen</b>	<b>Driver</b>	<b>Color Temperature</b>
SSSTS LED Smartsense Wall Mount Rectangular Profile	MW	48L 48" Matt White	<b>E36W3500L</b> 36 System Watts, 3500 Delivered Lumens  <b>E58W5000L</b> 58 System Watts, 5000 Delivered Lumens	<b>DMV 120-277 0-10V DIM</b>  <b>DMV(**) 120-277 0-10V w/ Bi-Level Dimming</b>	<b>30K</b> 3000K <b>35K</b> 3500K <b>40K</b> 4000K <b>50K</b> 5000K
SSSTR LED Smartsense Wall Mount Half Moon Profile				* Replace ** with percentage of light to remain on 24/7 10- 90 range.	

\* EM OPTION AVAILABLE ON 4' VERISON ONLY 10W emergency driver installed

Saylite  
2055 Luna Rd. Suite 142 Carrollton, TX 75006  
Phone: 972-247-3171 Fax: 972-247-0200  
www.saylite.com email: sales@saylite.com

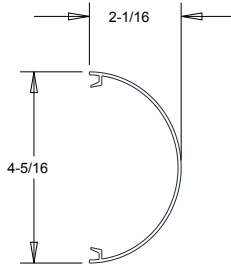
Catalog Number:

Notes:

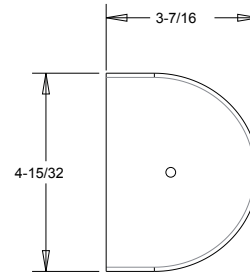
### Dimensions



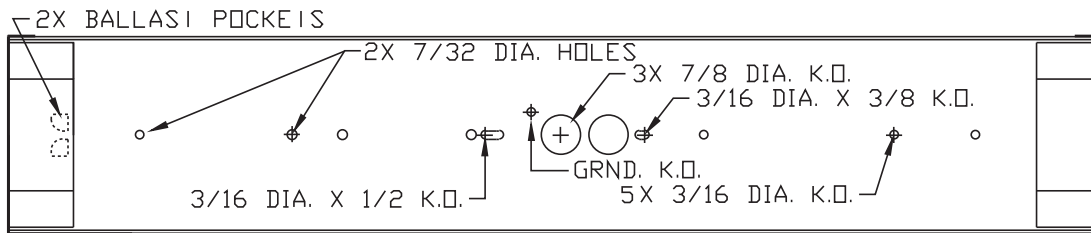
LED	
SIZE	LENGTH
(1 or 2) 22" Boards	24 ¼
(2 or 4) 22" Boards	46 ¼



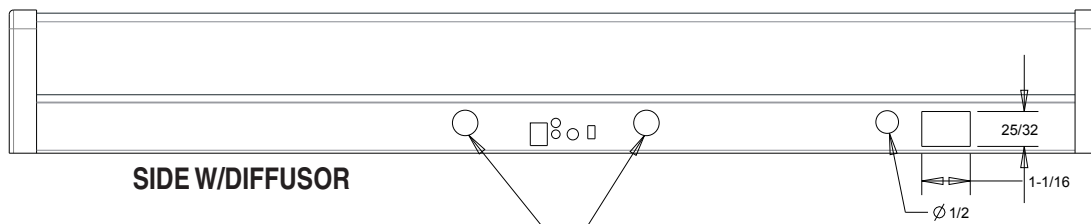
DIFFUSOR



END

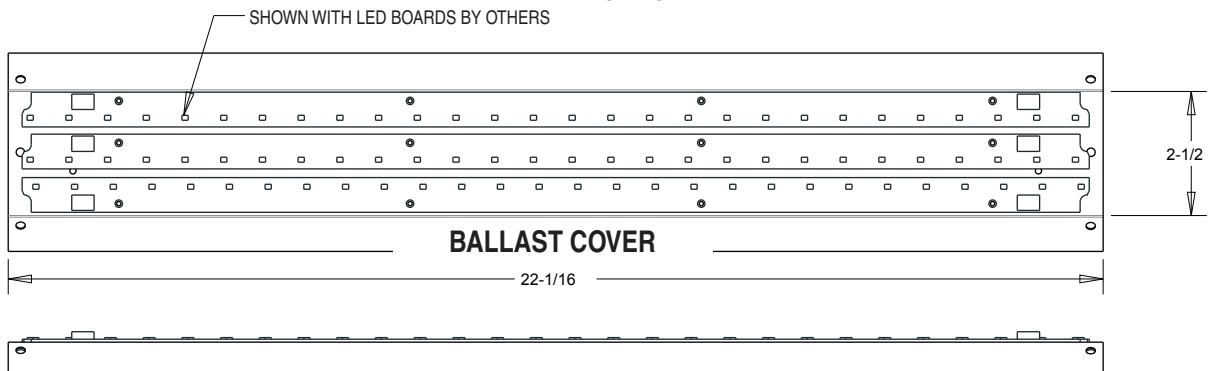


TOP



SIDE W/DIFFUSOR

OPTIONAL MOTION and SOUND

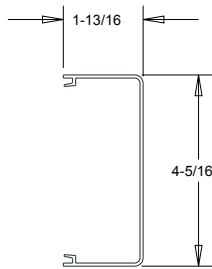




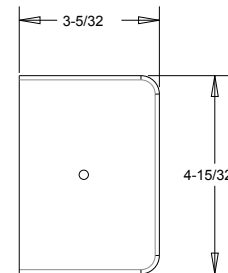
SSSTS

### Dimensions

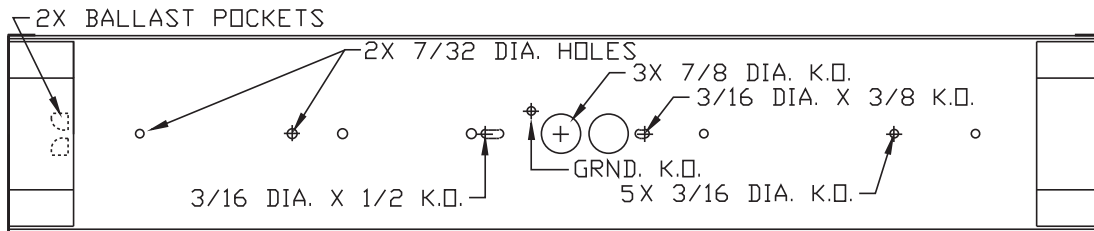
LED	
SIZE	LENGTH
(1 or 2) 22" Boards	24 ¼
(2 or 4) 22" Boards	46 ¼



DIFFUSOR



END



TOP

