

Series SER

LED Linear Contoured Strip

Full body micro silhouette makes a bold statement with a minimal design in post-painted in powder coated flat white finish (consult factory for other finishes). Scaled to the LED module the matte white diffuser surrounds the LEDs for soft lighting. Fixture can be surface mounted on wall or ceiling or pendant mounted with specially engineering cable mounting kit.

CONSTRUCTION

Fully assembled housing is formed and welded, 22 gauge steel, chemically treated to resist corrosion and enhance paint adhesion. Can be mounted individually or in continuous row. Available with smooth frosted lens. Knock-outs on back accept standard electrical fittings (by others) Consult factory for other locations.

MOUNTING

Surface mount or Pendant mount. Horizontal or Vertical.

TYPICAL OPTIONS & ACCESSORIES

Cord sets, whips, fuses, occupancy sensors, etc. Multiple finish options available. Emergency battery backup optional. Contact factory for more details.



DIMENSIONS

2ft. - 24"L x 3.79"W x 3.93"H
4ft. - 48"L x 3.79"W x 3.93"H
8ft. - 96"L x 3.79"W x 3.93"H

FEATURES & BENEFITS

- Surface or pendant mounted
- Attractive source of direct lighting for any indoor applications
- Individual use, continuous fixture runs or configurable in custom shapes with joiners and end caps
- Integral driver, snap-fit lens
- Easy installation
- Multiple lumen packages (3000K, 3500K, 4000K, 5000K); consult factory for RGBW option
- Variety of lumen packages and wattages through use of programmable drivers
- CRI: >80 standard, 90 optional
- L70: >50,000 Hours
- Dimming: 0-10V 120-277V standard, 120 ELV/TRIAC optional
- Emergency backup options available
- Power Factor: >0.90
- IC rated for damp and dry locations
- 5-Year Warranty
- Custom finishes available; contact factory

CATALOG# :

PROJECT :

TYPE :

Series SER

LED Linear Contoured Strip

ORDER INFORMATION

Factory at your fingertips. Fill in the blanks to create your part number or create a custom configuration.

				W	L		
SENSOR	SERIES	LENS MATERIAL	LENGTH	WATTAGE * & LUMENS *		DRIVER	COLOR & CRI **
SS Sensor - On/Off SV Bi-level (xx) SD Daylight Harvesting	SER Linear Contoured Strip	FR Frosted Lens	24L 24"	T14W1400L	14 Watts 1400 Lumens	DMV 0-10V Dimming	30K 3000K 80 CRI
				T20W2000L	20 Watts 2000 Lumens	G120 ELV/TRIAC dimming at 120V only (only available with SS sensor)	35K 3500K 80 CRI
			48L 48"	T28W2800L	28 Watts 2800 Lumens	D1MV 0-10V Dimming (dim to 1%)	40K 4000K 80 CRI
				T40W4000L	40 Watts 4000 Lumens		50K 5000K 80 CRI
			96L 96"	T56W5600L	56 Watts 5600 Lumens	DMV(xx) 0-10V Dimming (xx) for percentage of light output when not occupied. (required for SV sensor)	930K 3000K 90 CRI
				T80W8000L	80 Watts 8000 Lumens		935K 3500K 90 CRI 940K 4000K 90 CRI 950K 5000K 90 CRI

Additional Options

FINISH	CONFIGURATION	OPTIONS
WH White BK Black SI Silver	Blank Individual -B Beginner Run -E Ender Run -J Joiner	HC501WH Cable kit with 4' cable & 3 wires power feed/cable incl. and white canopy HC502WH Cable kit with 12' cable & 3 wires power feed/cable incl. and white canopy HC5015WWH Cable kit with 4' cable & 5 wires power feed/cable incl. and white canopy HC5025WWH Cable kit with 12' cable & 5 wires power feed/cable incl. and white canopy 2SCS24WH Two stem kits with 24" stem, canopy and mounting hardware for a 4' fixture EM 10W Emergency battery backup (internal, excludes less than 4ft) EM12 12W Emergency backup (internal, excludes less than 4ft) EM20 20W Emergency backup (remote only)

Note:

*Programmable LED drivers allow custom configured wattages and corresponding lumens.

**90 CRI is not available in 5000K.

We reserve the right to change design, materials, LEDs and finish in any way that will not alter installed appearance or reduce function and performance.

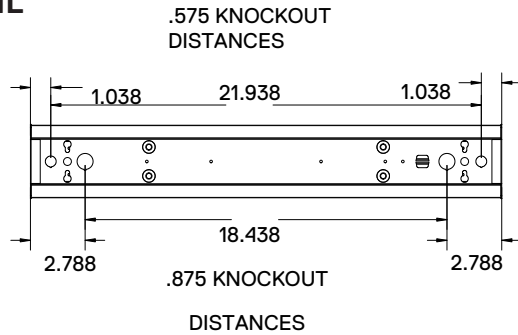
2055 Luna Road Suite 142 | Carrollton, TX 75006

T 214.884.1150 | F 972.247.0200 | sales@saylite.com

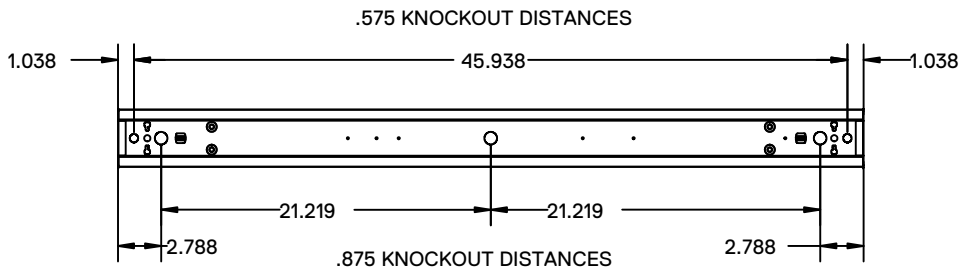
REV 04/28/2020

DRAWINGS & IMAGES

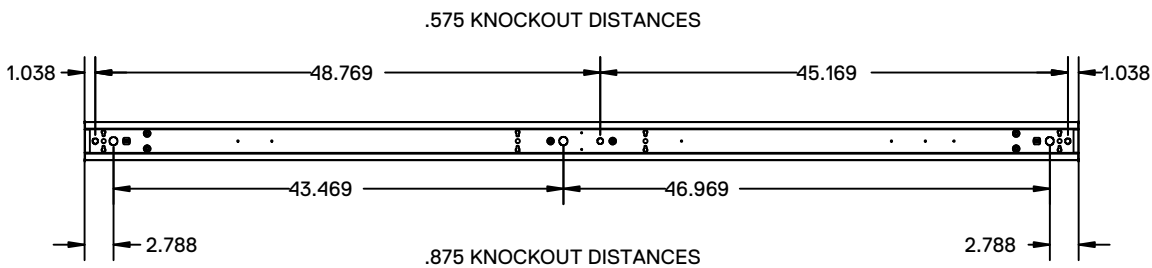
24L



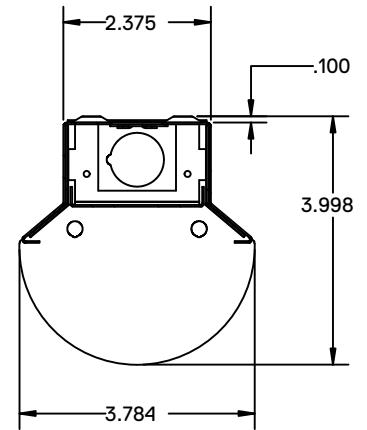
48L



96L



End View



OCCUPANCY SENSOR

- Self-Contained Relay
- No Power Pack Needed
- No Minimum Load
- Requirements Interchangeable
- Hot & Load Wires, Impossible to Wire Backwards Push-Button Programmable
- Adjustable Time Delays
- No Field Calibration or Sensitivity Adjustments Required
- Convenient Test Mode
- 100 hr Lamp Burn-in Timer
- Green LED Indicator

PHYSICAL SPECS

- SIZE: 2.25" H x 1.38" W x 0.82" D (5.715 cm x 3.51 cm x 2.08 cm)
- WEIGHT: 4 oz
- MOUNTING: Snaps into 2 3/16" H x 1 5/16" W x 1" D cavity in fixture
- COLOR: White