



Texas Fluorescents  
Reinvented

CATALOG#: \_\_\_\_\_  
PROJECT: \_\_\_\_\_  
TYPE: \_\_\_\_\_



# Series PRL

## LED Perimeter Recessed Light

The High Performance Perimeter Recessed Light creates a wash of ambient and vertical illumination at the transition between the wall and the ceiling plane. Available in 2', 4', 6' & 8' sections with telescoping option in 4' and 5' only that can be combined to make longer runs, and 2", 4" and 6" regressed optic.

### CONSTRUCTION

Steel sheet metal galvanized and powder coated body.  
Internal joiner system, plug-together wiring standard.

### DIFFUSER

Frosted diffusers

### MOUNTING

The standard mounting (Threaded Rod -TR) option eliminates the need to install luminaires prior to the slot being framed. Luminaire mounts on threaded rods. Gasket runs length of luminaire ensuring a clean finish at the wall. Optional mounting includes a wall bracket that is attached to the wall. Luminaires are then snapped onto the bracket. Luminaire installation that uses the mounting bracket must be performed before the perimeter slot framing is built.

### LENGTHS

Standard 2', 3', 4', and 8' section lengths can be combined to make longer runs. Optional tele-scoping sections on straight runs make luminaire adjustable from 50" to 60" in a 4ft and 62" to 72" in a 5ft. Telescoping sections are available on only one end of the luminaire.

### DIMENSIONS

- 2ft.-4"W x 24"L x 2"/4"/6"H
- 4ft.-4"W x 48"L x 2"/4"/6"H
- 6ft.-4"W x 72"L x 2"/4"/6"H
- 8ft.-4"W x 96"L x 2"/4"/6"H

### FEATURES & BENEFITS

- Can be recessed on T-bar ceiling or wall mounted with a wall bracket
- Attractive source of direct lighting for use in offices, hallways, conference rooms and medical facilities
- Suitable for dry or damp location
- >50,000 hrs of L70 LED life
- CRI >80
- 0-10 Volt dimmable 120-277V
- Power Factor >0.90
- 100 lm/w
- 0-10V dimming or Triac dimming
- 5 year warranty.

### SPECIFICATIONS

#### END CAPS

The luminaire can terminate in three different end conditions to accommodate project needs. Endcaps are made of 22-gauge die-formed steel.

#### END CONDITIONS:

##### Beginner (B) or End (E)

Standard is used when the luminaire terminates at a wall. Adds 1/8" per endcap to overall length of the luminaire.

##### Joiner (J)

Includes the necessary hardware to accommodate ceiling materials when the luminaire doesn't terminate at a wall. Adds 1-1/4" for Spackle Flange and 1" for T-Bar per endcap to overall length of the luminaire.

##### Telescoping (T)

Provides up to 12" of additional illuminated section to accommodate variances in the built-in wall slot.

Telescoping available on only one end of 4' or 5' luminaire sections. Adds a minimum of 2" at the end to overall section length. Telescoping section must end at wall and be secured with bracket (provided).

#### FEED

Standard with one 18-gauge/5-conductor single-circuit feed. 14-gauge feed used when luminaire current exceeds 5 amps. Optional 6' flex conduit whips available. Dual knockouts (for dual flex conduit) are available at the top and rear feed locations. Endcaps have a single knockout and support a single flex conduit only.



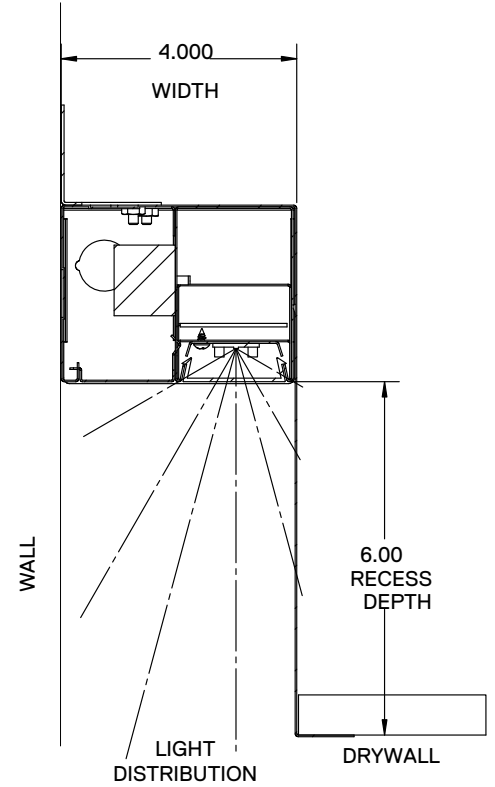
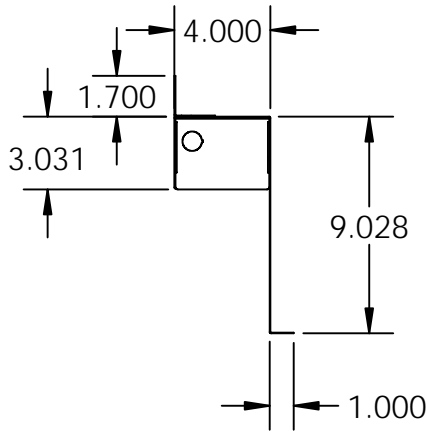
**T - Telescoping**



**Standard Fixture  
End View**

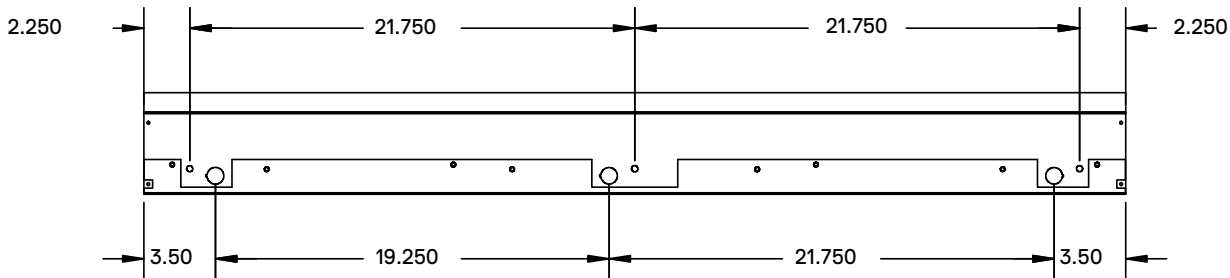
**DIMENSIONS**

**END VIEW**

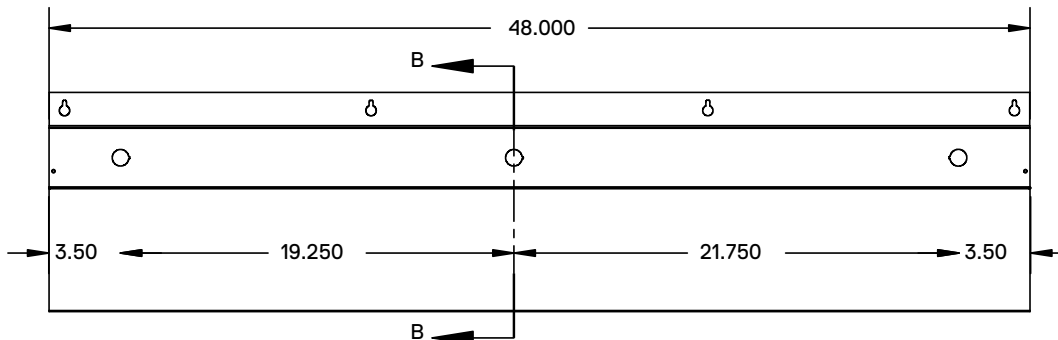


**SIDE VIEW**

.300 KNOCKOUT DISTANCES



.875 KNOCKOUT DISTANCES



We reserve the right to change design, materials, LEDs and finish in any way that will not alter installed appearance or reduce function and performance.

CATALOG# : \_\_\_\_\_  
PROJECT : \_\_\_\_\_  
TYPE : \_\_\_\_\_

# Series PRL

## LED Perimeter Recessed Light

### PRODUCT NUMBERS

SERIES	MOUNTING		OPTIC SIZE		CEILING		LENS		LENGTH		WATTAGE & LUMENS	
PRL PERIMETER RECESSED LIGHT	W	Wall Bracket *For Drywall Installation	42	4"W x 2"H	RF	Flange	SF	Snap-in frosted acrylic lens (85% transmission) Special for LEDs; only available for uplight and downlight	24L	24"	T16W1600L	16 Watts 1600 Lumens
			44	4"W x 4"H	R	1" T-bar			48L	48"	T32W3200L	32 Watts 3200 Lumens
	TR	Threaded Rod *For Grid Ceiling Installation	46	4"W x 6"H					72L	72"	T48W4800L	48 Watts 4800 Lumens
									96L	96"	T64W6400L	64 Watts 6400 Lumens

----- \* ----- \*

DRIVER		CCT		CRI		CONFIGURATION		OPTIONS	
DMV	0-10V Dimming	30K	3000K	BLANK	80CRI	-B	Beginner Run	EM	10 Watt Emergency Battery Backup for 90 mins
G120	ELV/Triac Dimming at 120W only (only available with SS sensor)	35K	3500K	90	90 CRI	-E	Ender Run	*Require to be removed for length 3ft or under	
		40K	4000K			-J	Joiner		
		50K	5000K			-T	Telescoping		
D1MV	0-10V Dimming (dim to 1%)								
DMV(xx)	0-10V Dimming (xx) for percentage of light output when not occupied. (required for SV sensor)								

**Note:**

\*Programmable LED drivers allow custom configured wattages and corresponding lumens.

We reserve the right to change design, materials, LEDs and finish in any way that will not alter installed appearance or reduce function and performance.