



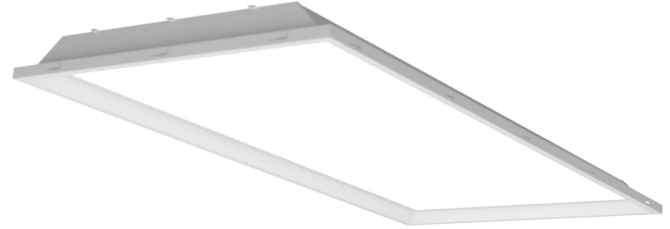
JOB NAME:

CAT#:

TYPE:

APPLICATIONS

This new backlit Flat Panel provides comfortable, abundant lighting from a very thin and modern design. Available in 1x4, 2x2 and 2x4 in multiple color temperatures and dimmable with 0 to 10 Volt dimming. The panel is designed for T-Bar recessed mounting with ballast box on the top side of the panel. The panel has an unobstrusive white edge. These panels are an ideal choice for many applications including offices, circulation spaces, retail and now popular in residential kitchens remodeled to give a skylight appearance.

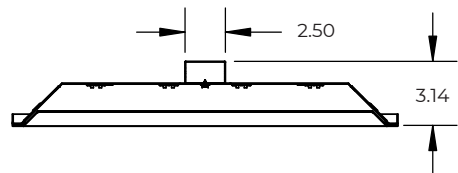
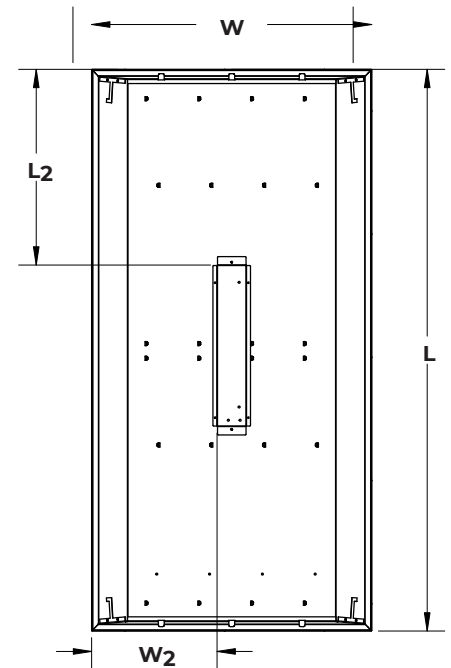
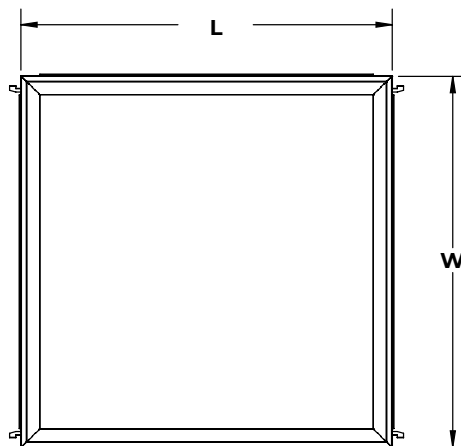


FEATURES & BENEFITS

- 3 standard sizes for grid ceilings – 12x48, 24x24, and 24x48
- Customizable finish colors available
- Ultra thin LED panel light made from high-grade aluminum
- Many lumen package / wattage options via programmable drivers
- CRI > 80
- >50,000 hrs of L70 LED life
- Power factor >0.90

DIMENSIONS

Part	W	L	W ₂	L ₂
SKBW12X48	11.78"	47.5"	4.7"	16.7"
SKBW24X24	23.75"	23.75"	10.7"	4.7"
SKBW24X48	23.75"	47.5"	10.7"	16.7"



Dimensions and specifications subject to change without notice.





JOB NAME:

CAT#:

TYPE:

ORDERING

EXAMPLE: SKBW 12X48 LED 40 DMV BK 35

SKBW

LED

1. SERIES	2. WIDTH X LENGTH ¹	3. GEAR	4. WATTAGE/LUMENS ²	5. DRIVER	6. FINISH ³	7. COLOR TEMP			
SKBW	12X48	LED			DMV 120-277V Multivolt 0-10V Dimmable	BK Black SI Silver WH White	35 3500K 40 4000K 50 5000K		
				11.78" x 47.5"					<u>12X48 in.</u>
				23.75" x 23.75"				48	48 Watts
			23.75" x 47.5"	40				<u>24X24 in.</u> 40 Watts	
				95				<u>24X48 in.</u> 95 Watts	

Notes:

¹SKBW fixtures are measured by overall frame width and length

²Wattage and lumen values are total for the fixture

³Consult for custom finish options

Dimensions and specifications subject to change without notice.



JOB NAME:

CAT#:

TYPE:

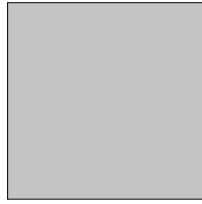
FLAIR FINISH COLORS



Gloss Black
(GB)



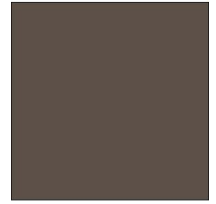
Matte Black
(BK)



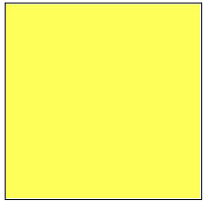
Matte Silver
(SL)



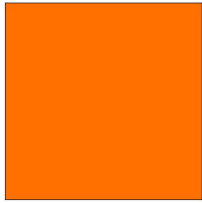
Statuary Bronze
(BZ)



Glimmer (Iron)
(IR)



Safety Yellow
(YL)



Safety Orange
(OR)



Red
(RD)



Fire Engine Red
(FR)



Blue
(BL)

NOTE: Factory offers any Tiger Drylac RAL finish, contact Saylite for more information. Consult factory for information on specialty "real wood" finishes.

Dimensions and specifications subject to change without notice.