



JOB NAME:

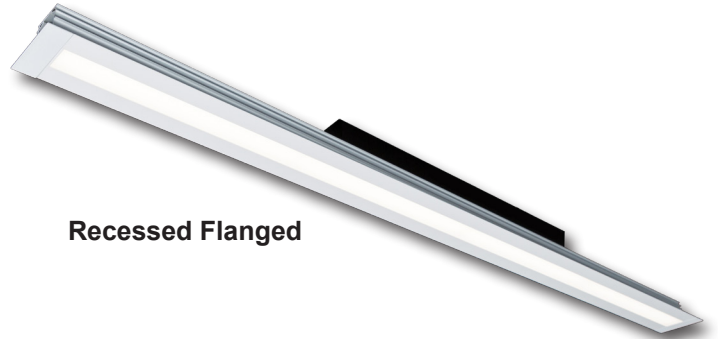
CAT#:

TYPE:

APPLICATIONS

The AIOCLF provides an elegant and uniform 1.5” wide line of light that seamlessly blends into a hard ceiling. It is available with visible white flange or flangeless appearance with only the narrow lens showing. The flangeless version includes a specially designed adjustable 1/8”, 1/2”, or 5/8” mud-in flange to accommodate various sheetrock thicknesses and mud-in methods. It is available with an integral driver in 4 or 8 foot sections that can be used individually or joined together for longer runs. This fixture is ideal for corridors, elevator vestibles, conference rooms, retail, or residential spaces.

The AIOCLF also comes in a uniquely designed kit that includes a 3ft, 2ft, and 1ft, section that can be joined to make one 6ft fixture or mounted separately for a modern cascading look. The 3ft contains an integral driver and a unique plug-and-play system that allows it to power the 1ft and 2ft sections when connected with a 6ft cord. (constl for longer cord lengths)



Recessed Flanged



Recessed Flangeless

FEATURES & BENEFITS

- Flanged or flangeless
- Integral driver, snap fit lens
- Suitable for individual or continuous runs
- Integral wire harness
- Magnetic light leak block
- $L_{70} > 50,000$ hrs.
- Min CRI 80
- Operating temperature -20°C to 55°C
- 5 year warranty

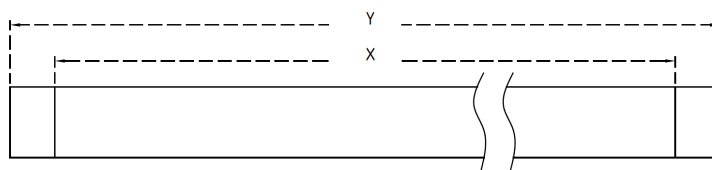
DIMENSIONS

AIOCLFRF Length Options

Part Number	X (Lens Length)	Y (Flange Length)
AIOCLFRF48	48.31”	50.08”
AIOCLFRF96	96.30”	98.07”
3-2-1 Kit		
AIOCLFRF12	12.30”	14.06”
AIOCLFRF24	24.30”	26.06”
AIOCLFRF36	36.30	38.07”

AIOCLFRR Length Options

Part Number	X (Flange Length)	Y (Overall Length)
AIOCLFRR48	48.31”	48.43”
AIOCLFRR96	96.30”	96.42”
3-2-1 Kit		
AIOCLFRR12	12.30”	12.40”
AIOCLFRR24	24.30”	24.40”
AIOCLFRR36	36.30	36.40”



Dimensions and specifications subject to change without notice.



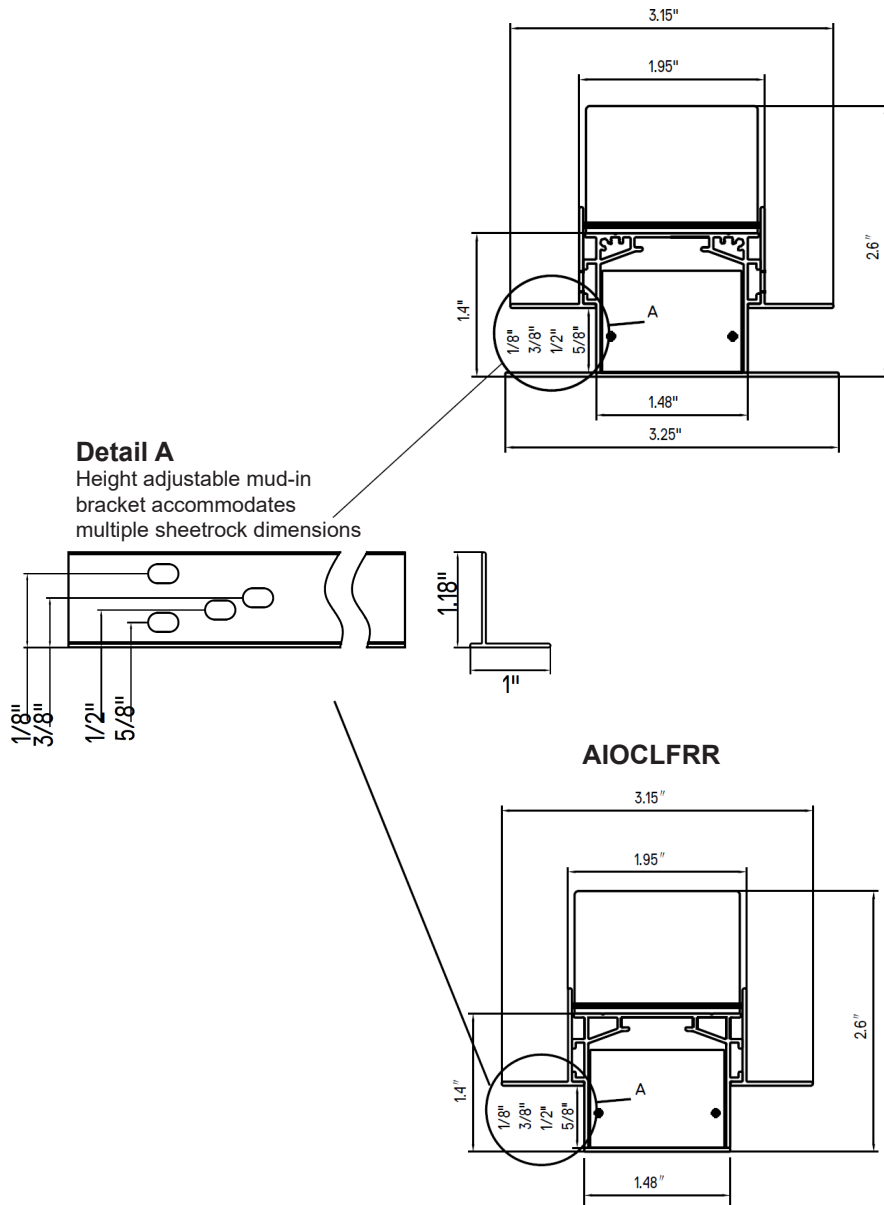


JOB NAME:

CAT#:

TYPE:

DIMENSIONS



Dimensions and specifications subject to change without notice.





JOB NAME:

CAT#:

TYPE:

ORDERING

EXAMPLE: AIOCLF RF 48-LED30 DMV WH 30

AIOCLF

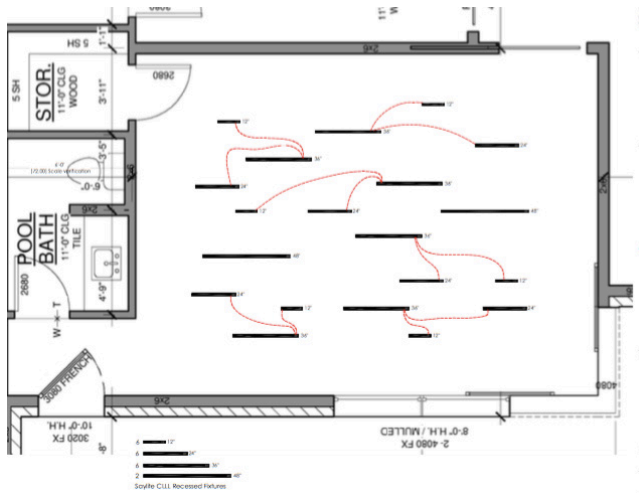
1. SERIES	2. MOUNTING	3. LENGTH/GEAR/WATTAGE	4. DRIVER	5. FINISH	6. COLOR TEMP
AIOCLF	RF Recessed Flanged RR Recessed Flangeless	48-LED30 48" LED 30 Watts 3000 Lumens 96-LED60 96" LED 60 Watts 6000 Lumens	DMV 120-277VAC 0-10V Dimmable	WH White	30 3000K 40 4000K

3-2-1 KIT

AIOCLF 3-2-1 Kit Ordering Table	
AIOCLFRFKITDMVWH30	Recessed Flanged 3 Piece Set 38.1", 26.1", & 14.1"L x 3.2"W x 1.4"H / Frosted Lens 1.5"W / 45W 4200L / White Finish / 3000K
AIOCLFRFKITDMVWH40	Recessed Flanged 3 Piece Set 38.1", 26.1", & 14.1"L x 3.2"W x 1.4"H / Frosted Lens 1.5"W / 45W 4200L / White Finish / 4000K
AIOCLFRRKITDMVWH30	Recessed Flangeless 3 Piece Set 36.4", 24.4", & 12.4"L x 2.6"W x 1.4"H with Frosted Lens / 45W 4200L / White Finish / 3000K
AIOCLFRRKITDMV40	Recessed Flangeless 3 Piece Set 36.4", 24.4", & 12.4"L x 2.6"W x 1.4"H with Frosted Lens / 45W 4200L / White Finish / 4000K



*Consult factory for custom finishes



Dimensions and specifications subject to change without notice.





JOB NAME:

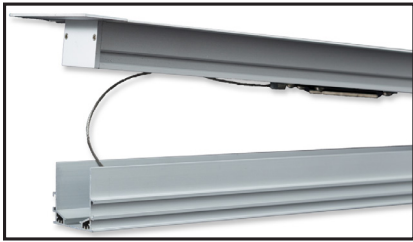
CAT#:

TYPE:

TECHNICAL DATA

Rough In And Trim System

Separate housing installs easily during ROUGH-IN. LED trim installs quickly during trim out with innovative magnetic system



Endless Lines Of Light

Connect multiple fixtures for continuous runs



Adjustable Flange

The AIOCLF mud-in bracket is adjustable to 4 different heights to accommodate multiple sheetrock dimensions.



Dimensions and specifications subject to change without notice.

