



Texas Fluorescents  
Reinvented

CATALOG#: \_\_\_\_\_  
PROJECT: \_\_\_\_\_  
TYPE: \_\_\_\_\_

# Series L23

## LED Recessed Mount Linear Fixture

A linear 2 x 3 fixture for distinctive architectural lighting plans. Ideal for corridors, lobbies, and office areas, 2 x 3 Series fixtures can be installed individually or in a continuous run. Specially designed for direct lighting with snap in lens to hide the lamps or LED arrays.

### CONSTRUCTION

Die-formed and welded 22-gauge cold rolled steel. Knockouts on ends allow continuous wireway mounting. Housing is specially designed for direct lighting with separating power source compartments for each.

### DIFFUSERS

Special LED formulated frosted lenses with snap in feature for easy access.

### TYPICAL OPTIONS & ACCESSORIES

Cord sets, whips, occupancy sensors, etc.  
Contact factory for more details.



### DIMENSIONS

- 2ft.-2"W x 24"L x 3"H
- 4ft.-2"W x 48"L x 3"H
- 8ft.-2"W x 96"L x 3"H

### FEATURES & BENEFITS

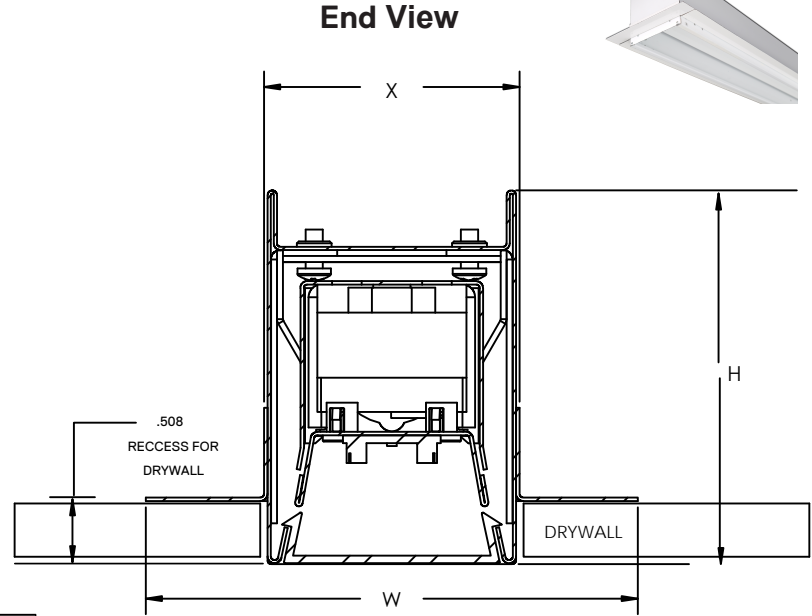
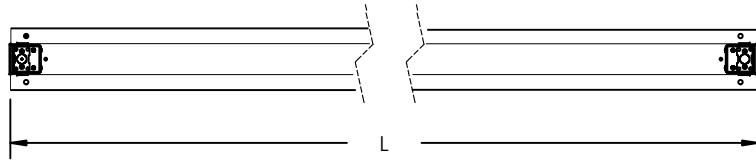
- Can be recessed mounted to the drywall ceiling or grid ceiling with engineered mounting kit.
- Attractive source of direct lighting for use in offices, hallways, conference rooms and medical facilities
- External Emergency Battery Backup is available
- Available in custom finish. Consult factory for details.
- Driver conforms to FCC Title 47 Part 15 Class A
- Suitable for dry or damp location
- 50,000 hrs of L70 LED life
- CRI >80
- 0-10 Volt dimmable 120-277V
- Power Factor 0.99
- 100 lm/w
- 0-10V dimming or Triac dimming
- 5 year warranty.



#### RECESSED MOUNT (RR) DRAWINGS & DIMENSIONS

PART	L	W	H	X
L23RR12L	12.00"	3.96"	3.00"	2.00"
L23RR24L	24.00"	3.96"	3.00"	2.00"
L23RR36L	36.00"	3.96"	3.00"	2.00"
L23RR48L	48.00"	3.96"	3.00"	2.00"
L23RR60L	60.00"	3.96"	3.00"	2.00"
L23RR72L	72.00"	3.96"	3.00"	2.00"
L23RR84L	84.00"	3.96"	3.00"	2.00"
L23RR96L	96.00"	3.96"	3.00"	2.00"

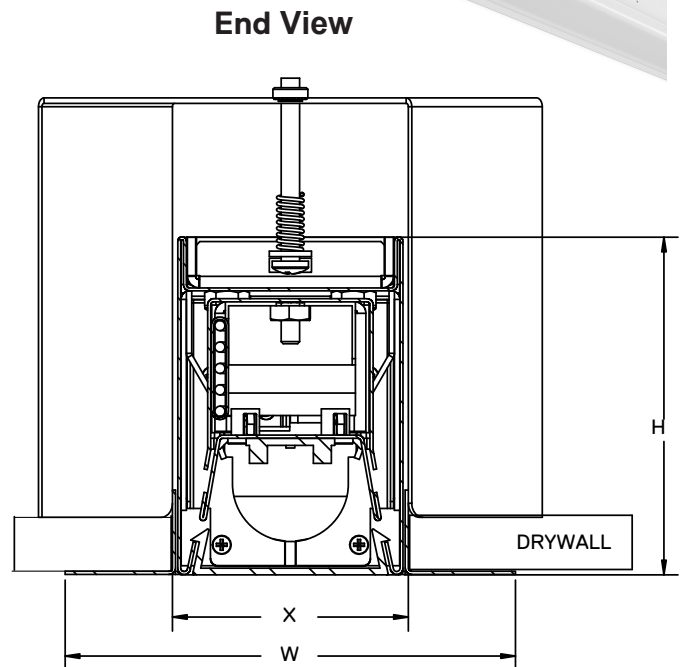
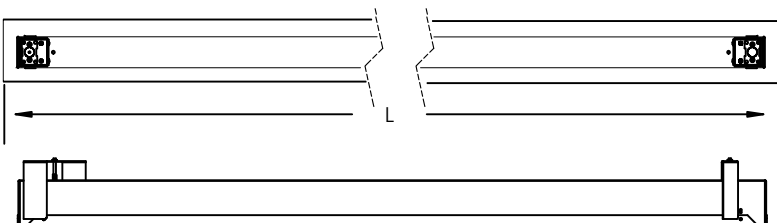
#### Back View



#### RECESSED MOUNT (RF) DRAWINGS & DIMENSIONS

PART	L	W	H	X
L23RF12L	14.00"	3.96"	3.00"	2.00"
L23RF24L	26.00"	3.96"	3.00"	2.00"
L23RF36L	38.00"	3.96"	3.00"	2.00"
L23RF48L	50.00"	3.96"	3.00"	2.00"
L23RF60L	62.00"	3.96"	3.00"	2.00"
L23RF72L	74.00"	3.96"	3.00"	2.00"
L23RF84L	86.00"	3.96"	3.00"	2.00"
L23RF96L	98.00"	3.96"	3.00"	2.00"

#### Back View





Texas Fluorescents  
Reinvented

CATALOG#: \_\_\_\_\_  
PROJECT: \_\_\_\_\_  
TYPE: \_\_\_\_\_

# Series L23

## LED Recessed Mount Linear Fixture

### PRODUCT NUMBERS

#### 4 and 8 Ft.

SERIES	LENS MATERIAL	LENGTH	WATTAGE & LUMENS		DRIVER	COLOR
<b>L23RR</b> 1/2" Recess Flanged For efore` Drywall installation  <b>L23RF</b> Recessed Flange For Exiting Drywall installation  <b>L23RRPF</b> Proforated Flange after Drywall installation	<b>SF</b> Snap-in frosted acrylic lens (85% transmission) Special for LEDs; only available for uplight and downlight	<b>48L 48"</b>	<b>T20W2000L</b> 20 Watts 2000 Lumens	*                      *	<b>DMV G120</b> 0-10V dimming ELV/Triac dimming at 120V only	<b>30K</b> 3000K <b>35K</b> 3500K <b>40K</b> 4000K <b>50K</b> 5000K
			<b>T38W3800L</b> 38 Watts 3800 Lumens			
			<b>T45W4500L</b> 45 Watts 4500 Lumens			
		<b>96L 96"</b>	<b>T40W4000L</b> 40 Watts 4000 Lumens  <b>T76W7600L</b> 76 Watts 7600 Lumens  <b>T90W9000L</b> 90 Watts 9000 Lumens	*                      *		

FINISH		CONFIGURATION	
<b>WH</b>	White	<b>Blank</b>	Individual
<b>BK</b>	Black	<b>-B</b>	Beginner Run
<b>SI</b>	Silver	<b>-E</b>	Ender Run
		<b>-J</b>	Joiner

**Note:**

\*Programmable LED drivers allow custom configured wattages and corresponding lumens.

We reserve the right to change design, materials, LED's and finish in any way that will not alter installed appearance or reduce function and performance.