

# Series 153

## LED Surface Mounted Troffer

Specification grade, low profile surface mount provides for an almost limitless range of applications in areas where surface modulars (no grid) are required. The shrouded troffer is an economical alternative to the 153 series. It is Ideal for all commercial and industrial buildings.

### CONSTRUCTION

Housing is die-formed and embossed code 22 gauge steel. Finish is high reflectance baked white enamel. Wiring knockouts are provided on back of housing. Gear tray or reflector snaps into place; no tools required for driver. Lens is held with a hinged steel door frame; frame hinges downward on either side and is held closed by two positive cam latches. Premium, full specular reflectors are available as an option to increase efficiency or modify lighting distribution.

### TYPICAL OPTIONS & ACCESSORIES

Emergency battery backup, cord sets, whips, wire guards. Contact factory for additional options.

### LED ENGINE

Programmable driver changes LED array output to provide different outputs



### DIMENSIONS

2x2 - 23.75"W x 24.0"L x 3.75"Dp

1x4 - 11.75"W x 48.0"L x 3.75"Dp

2x4 - 23.75"W x 48.0"L x 3.75"Dp

### FEATURES & BENEFITS

- Post painted powder coat finish
- Shallow, low profile design. No external fasteners.
- Clear 0.10 thick acrylic lens is standard; many options available.
- Direct surface mount
- Fully enclosed spring loaded cam latches allow years of hassle free maintenance.
- Heavy gauge welded end plates and housing ensure durable, rigid construction.
- Fully gasketed door minimizes contaminants.
- Rated for dry and damp locations
- >50,000 hrs of L70 LED life
- CRI >80
- 0-10 Volt dimmable 120-277V
- Power Factor >0.90
- 5 year warranty.



## PRODUCT NUMBERS

Factory at your fingertips. Fill in the blanks to create your part number or create a custom configuration.

SERIES	LENS MATERIAL	LENGTH	WATTAGE* & LUMENS*	DRIVER	COLOR**	
153	A	22L 2x2	J24W2700L	24 Watts 2700 Lumens	DMV 0-10V Dimming	30K 3000K 80 CRI
	A125		J28W3200L	28 Watts 3200 Lumens	G120 TRIAC/ELV Dimming at 120V only	35K 3500K 80 CRI
	MW		J35W3900L	35 Watts 3900 Lumens	D1MV 0-10V Dimming (dim to 1%)	40K 4000K 80 CRI
	SP		J40W4500L	40 Watts 4500 Lumens		50K 5000K 80 CRI
	14L 1x4		J28W3500L	28 Watts 3500 Lumens		930K 3000K 90 CRI
			J35W4300L	35 Watts 4300 Lumens		935K 3500K 90 CRI
			J40W4900L	40 Watts 4900 Lumens		940K 4000K 90 CRI
			J48W5800L	57 Watts 5800 Lumens		950K 5000K 90 CRI
			J57W6600L	32 Watts 6600 Lumens		
	24L 2x4		J28W3800L	28 Watts 3800 Lumens		
			J35W4600L	35 Watts 4600 Lumens		
			J40W5300L	40 Watts 5300 Lumens		
			J48W6300L	48 Watts 6300 Lumens		
			J57W7100L	57 Watts 7100 Lumens		

OPTIONS			
WP	6 ft. 3 wire 18 gauge whip	EM	10W Emergency battery backup
WP4	6 ft. 4 wire 18 gauge whip (non dimming EM)	EM12	12W Emergency battery backup (2x4 only or remote)
WP5W	6 ft. 5 wire 18 gauge whip	EM20	20W Emergency battery backup (remote only)
WP6W	6 ft. 6 wire 18 gauge whip (dimming EM)		

Note:

\*Programmable LED drivers allow custom configured wattages and corresponding lumens.

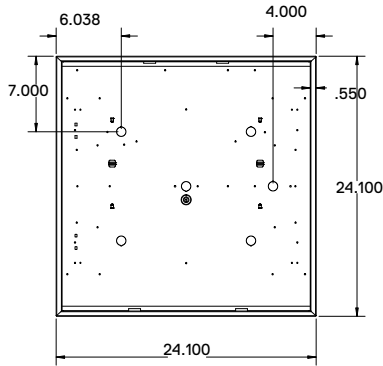
\*\* 90 CRI is not available in 5000K

We reserve the right to change design, materials, LEDs and finish in any way that will not alter installed appearance or reduce function and

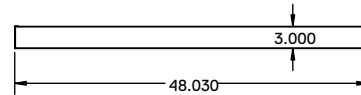
**DRAWINGS & IMAGES**

**2x2**

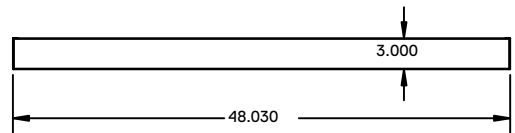
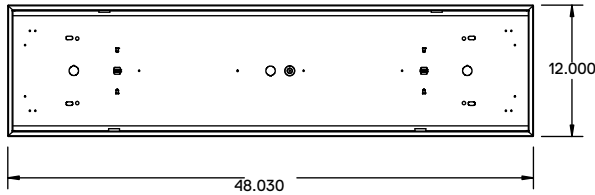
**Back View**



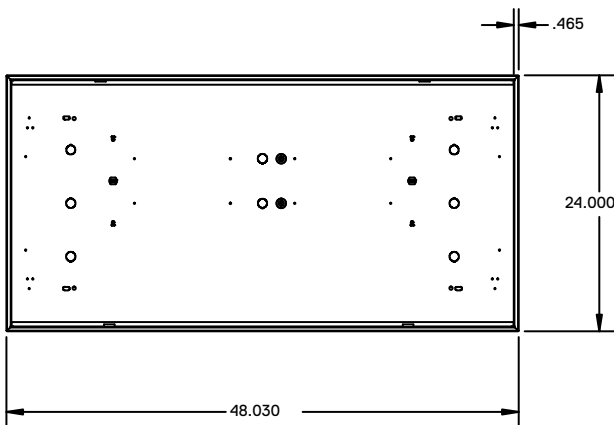
**Side View**



**1x4**



**2x4**

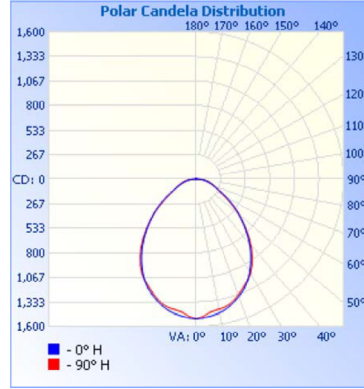


**Replacement Lens Ordering Information**

Series	Description
0153A22L	Replacement Acrylic lens for 2x2
0153A14L	Replacement Acrylic lens for 1x4
0153A24L	Replacement Acrylic lens for 2x4

**PHOTOMETRICS**

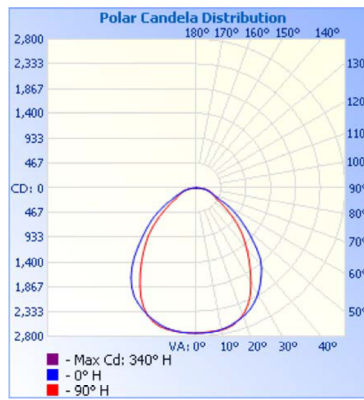
**2X2- 153A22LJ28W3200LDMV40K**



**Zonal Lumen Summary**

Zone	Lumens	% Luminaire
0-30	1,113.6	34.3%
0-40	1,761.2	54.3%
0-60	2,775.7	85.5%
60-90	466.0	14.4%
70-100	211.0	6.5%
90-120	1.6	0%
0-90	3,241.7	99.9%
90-180	3.8	0.1%
0-180	3,245.5	100%

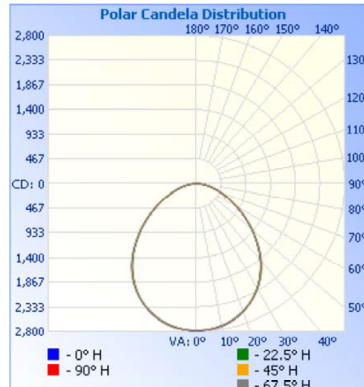
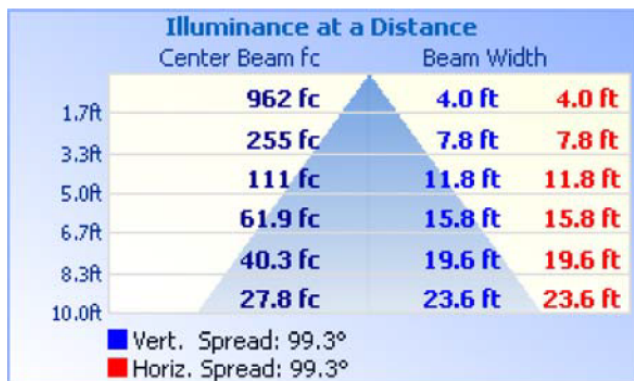
**1X4- 153A14LJ48W5800LDMV40K**



**Zonal Lumen Summary**

Zone	Lumens	% Luminaire
0-30	2,129.5	36.4%
0-40	3,350.9	57.3%
0-60	5,117.5	87.5%
60-90	730.3	12.5%
70-100	338.4	5.8%
90-120	2.4	0%
0-90	5,847.9	100%
90-180	2.4	0%
0-180	5,850.3	100%

**2X4- 153A24LJ57W7100LDMV40K**



**Zonal Lumen Summary**

Zone	Lumens	% Luminaire
0-30	2,139.1	31.2%
0-40	3,453.2	50.3%
0-60	5,719.4	83.3%
60-90	1,144.6	16.7%
70-100	476.9	6.9%
90-120	0	0%
0-90	6,864.0	100%
90-180	0	0%
0-180	6,864.0	100%