

CATALOG# : \_\_\_\_\_

PROJECT : \_\_\_\_\_

TYPE : \_\_\_\_\_

# Series RRS

## High Output Multi-Function LED Strips

This High Output Multi-Function LED strip offers a family of three different strips to meet a variety of applications in warehouses, retail and utility areas. Available in a cost effective and high output open strip version, a specially designed LED frosted lens version and a narrow focused reflector version. Each version is ideal for different applications and together make a perfect family of products for many industrial and back of house commercial applications. These fixtures can be surface or pendant mounted. Driver box hinges open for easy access to the driver without removing the lens or reflector. Consult for different finishes and different sizes.

### CONSTRUCTION

Housing is die-formed and embossed code 22 gauge steel. Finish is high reflectance baked white enamel. Wiring knockouts are provided on back and end of housing. Ballast cover, reflector or lens attach without tools with hinged construction to simplify ballast access.

### MOUNTING

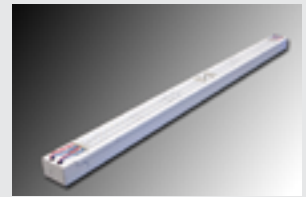
Surface mount, chain hung, double stem.



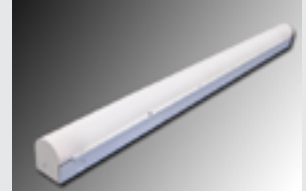
Multiple sensor options available.



Narrow Reflector



Open Strip



Frosted Lensed

### DIMENSIONS

#### Frosted Lens

48L – 48"L x 2.925"W x 3.395"H

96L – 96"L x 2.925"W x 3.395"H

#### White Reflector

48L – 48"L x 4.70"W x 6.20"H

96L – 96"L x 4.70"W x 6.20"H

#### Open

48L – 48"L x 2.925"W x 1.778"H

96L – 96"L x 2.925"W x 1.778"H

### FEATURES & BENEFITS

- 3 types of fixtures with one look: open, reflector and lensed
- Ideal for warehouse and back of house applications
- Reflector version is ideal for aisle lighting
- Easy to join for continuous run applications. Consult to add wiring harness
- Optional sensors and emergency drivers available
- 50,000 hours life to L70
- >80 CRI or 90CRI
- Consult for different finishes, asymmetrical reflector and special lengths
- 5 year warranty





CATALOG#: \_\_\_\_\_  
 PROJECT: \_\_\_\_\_  
 TYPE: \_\_\_\_\_

# Series RRS

High Output Multi-Function LED Strips

## ORDER INFORMATION

Factory at your fingertips. Fill in the blanks to create your part number or create a custom configuration.

### RRS

SERIES	LENS	LENGTH	WATTAGE* & LUMENS*	REFLECTOR	DRIVER	COLOR/CRI**	
RRS	Blank No Lens	48L 48"	E28W2700L	28 Watts 2700 Lumens	Blank No Lens	DMV 0-10V Dimming Multivolt 120-277	30K 3000K 80 CRI
			E48W4600L	48 Watts 4600 Lumens			
	FR Frosted Lens	96L 96"	E57W5400L	57 Watts 5400 Lumens	(Not available with lens option)	G120 120V 2 wire TRIAC dimming	40K 4000K 80 CRI
			E57W5400L	57 Watts 5400 Lumens			
	E96W9200L	96 Watts 9200 Lumens	930K 3000K 90 CRI				
	E114W10800L	114 Watts 10800 Lumens	935K 3500K 90 CRI				
			940K 4000K 90 CRI				
			950K 5000K 90 CRI				

### WH

FINISH	OPTIONS	HANGING KIT OPTIONS
WH White	EM14 Emergency battery	HC301WH Cable kit with 4' Cable & 3 Wires Power Feed/ Cable Incl. and White Canopy
	MDT4 On/off sensor	HC302WH Cable kit with 12' Cable & 3 Wires Power Feed/ Cable Incl. and White Canopy
	MDD4 Daylight dimming sensor	HC3015WWH Cable kit with 4' Cable & 5 Wires Power Feed/ Cable Incl. and White Canopy
		HC3025WWH Cable kit with 12' Cable & 3 Wires Power Feed/ Cable Incl. and White Canopy
		2SCS24WH Two Stem kits with 24" Stem, Canopy and Mounting hardware for a 4' fixture
		GT310 Gripple style cable kit

**Note:**

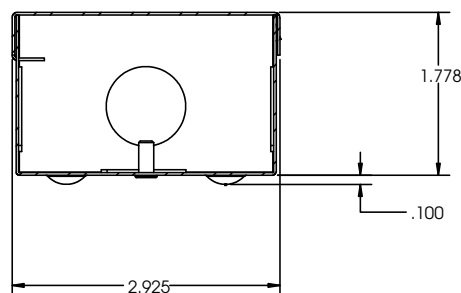
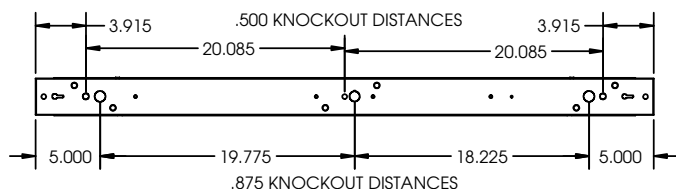
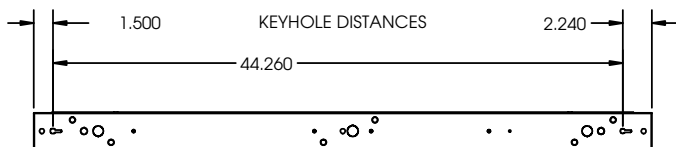
\*Programmable LED drivers allow custom configured wattages and corresponding lumens.

\*\* Consult factory for 90CRI availability.

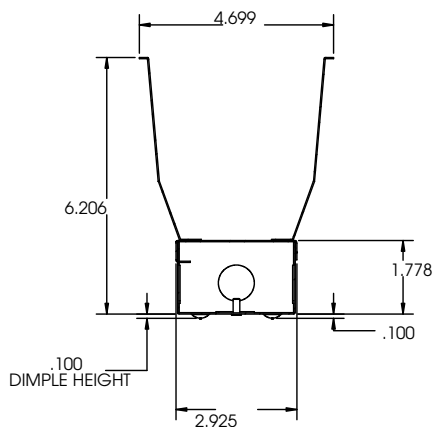
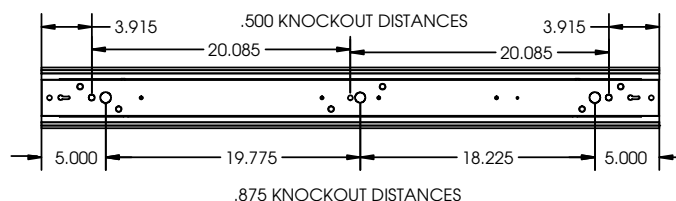
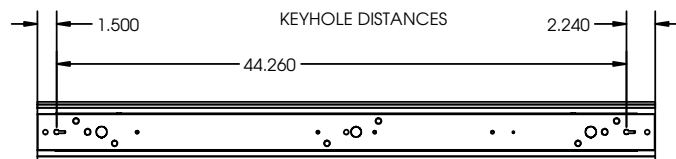
We reserve the right to change design, materials, LEDs and finish in any way that will not alter installed appearance or reduce function and performance.

### DRAWINGS & IMAGES

#### Open Strip



#### Reflector



#### Lens

