



# Series PEW/PES

## LED High-Efficiency Parabolic with White or Semi-Specular Louver

The PEW/PES High-Efficiency LED Parabolic Series is designed with a shallow (less than 4") profile. It is a breakthrough that offers greater efficiency and energy savings than a standard parabolic.

Offered with a (PEW) white louver for broader, balanced brightness, or an optional (PES) semi-specular louver and a frosted overlay to obscure the LED arrays.

The white louver used with PEW/PES Series gives luminaires a broad light distribution that evenly illuminates all surfaces in the space, creating comfortable, balanced brightness for occupants.

### CONSTRUCTION

The housing is die-formed, embossed, code 22 gauge steel. Its finish is high reflectance baked white enamel with matte white reflectors. 2x6 or 3x6 pattern louver cell count. Parabolic white louver or Semi-specular louver. 10W Emergency Battery Backup internal to the 2x4; remote mount with 12W and 20W backups.

### MOUNTING

Recessed Mounting in T-Grid ceilings

### TYPICAL OPTIONS & ACCESSORIES

Two Louver varieties, optional Frosted Overlay, Emergency Battery Backup option, 0-10V Dimming standard (TRIAC dimming optional), multiple Kelvin temps and lumen packages/wattages.

### DIMENSIONS

22L - 23.6"L x 23.76"W x 3.83"H  
24L - 47.63"L x 23.76"W x 3.83"H

### FEATURES & BENEFITS

- Many lumen package / wattage options via programmable drivers
- Multiple Kelvin Temperatures (3000K, 3500K, 4000K, 5000K)
- White louver or semi-specular louver
- Optional frosted overlay to obscure the LEDs
- CRI >80 standard, 90 optional
- L70: >50,000 Hours
- Dimming: 0-10V 120-277V standard, 120 ELV/TRIAC optional
- Emergency battery backup option available
- Power factor >0.90
- IC Rated for dry and damp locations
- 5 year warranty





CATALOG# : \_\_\_\_\_

PROJECT : \_\_\_\_\_

TYPE : \_\_\_\_\_

# Series PEW/PES

LED High-Efficiency Parabolic with  
White or Semi-Specular Louver

## ORDER INFORMATION

Factory at your fingertips. Fill in the blanks to create your part number or create a custom configuration.

SERIES	LOUVER CELL COUNT/MATERIAL	LENGTH	WATTAGE* & LUMENS*	DRIVER	COLOR
<b>PEW</b> Parabolic White Louver  <b>PES</b> Parabolic Semi-Specular Louver	<b>9C</b> 9 cell (2x6 pattern) semi-specular, 2 in nominal	<b>22L</b> 2 x 2	<b>J24W3000L</b> 24 Watts 3000 Lumens	<b>DMV</b> 0-10V Dimming  <b>G120</b> ELV/TRIAC Dimming at 120W only	<b>30K</b> 3000K 80 CRI
			<b>J30W3600L</b> 30 Watts 3600 Lumens		<b>35K</b> 3500K 80 CRI
	<b>18C</b> 18 cell (3x6 pattern) semi-specular, 2 in nominal	<b>24L</b> 2 x 4	<b>J48W6000L</b> 24 Watts 2700 Lumens	<b>D1MV</b> 0-10V Dimming (dim to 1%)	<b>40K</b> 4000K 80 CRI
<b>J60W7300L</b> 32 Watts 3600 Lumens			<b>50K</b> 5000K 80 CRI		
			<b>930K</b> 3000K 90 CRI		
			<b>935K</b> 3500K 90 CRI		
					<b>940K</b> 4000K 90 CRI
					<b>950K</b> 5000K 90 CRI

Add FR after 9C or 18C for Frosted Overlay to hide LEDs

CRI**	OPTIONS
Blank 80 CRI	EM 10W Emergency battery backup (internal in 2x4 only)
90 90 CRI	EM12 12W Emergency backup (remote only)
	EM20 20W Emergency backup (remote only)

**Note:**

\*Programmable LED drivers allow custom configured wattages and corresponding lumens.

\*\* Consult factory for 90 CRI 5000K availability.

We reserve the right to change design, materials, LEDs and finish in any way that will not alter installed appearance or reduce function and performance.

CATALOG#:

PROJECT:

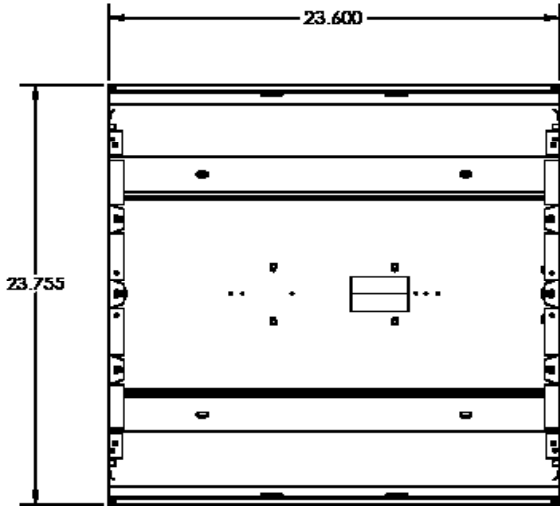
TYPE:

## Series PEW/PES

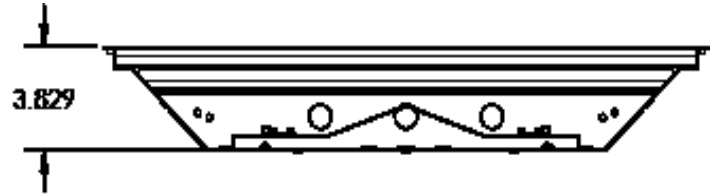
LED High-Efficiency Parabolic with  
White or Semi-Specular Louver

### DRAWINGS & IMAGES

**2x2  
Back**



**End**



**2x4  
Back**

