



Texas Fluorescents
Reinvented

CATALOG#: _____
PROJECT: _____
TYPE: _____

Series LVS6

LED Linear Pendant Louvered Industrial 6"

A direct lighting fixture that makes a bold statement, complementing design elements such as stone, metal, brick and glass. Industrial look provides a modern aesthetic. Available standard in galvanized steel finish or powder coated black. Mounts with cable kit. Louver is matte silver anodized parabolic.

CONSTRUCTION

Die formed cold-rolled steel body with heavy duty construction. Mates with parabolic louver.

LOUVER

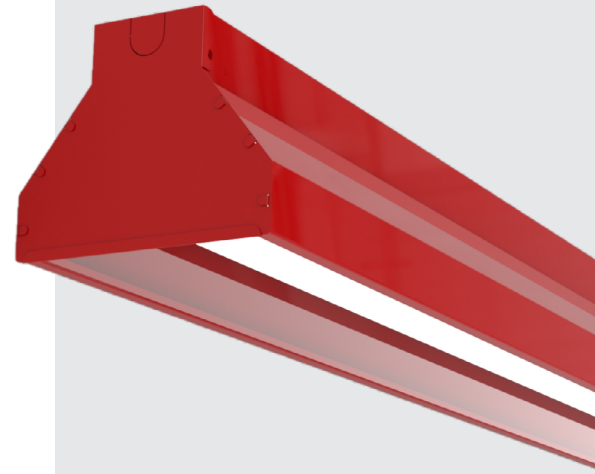
Matte silver anodized, parabolic, with optional slots on the side of the louver. End cap completes the finished louvered look.

MOUNTING

Fixtures can be surface mounted to the ceiling or pendant hung by stem or cable. Welded heavy-gauge steel flanges can be ordered to accept 3/8" threaded stems. Alignment brackets are available for continuous row mounting.

TYPICAL OPTIONS & ACCESSORIES

Emergency ballasts, cord sets, whips, occupancy sensors, hanging kits, wire guards. Contact factory for additional options.



DIMENSIONS

48L - 48"L x 6"W x 5.25"H
96L - 96"L x 6"W x 5.25"H

FEATURES & BENEFITS

- Suitable for dry and damp locations
- Standard black, white or silver finishes; ask factory for custom finish options
- CRI >80 standard, 90 optional
- L70: >50,000 Hours
- Dimming: 0-10V 120-277V standard, 120V ELV/TRIAC optional
- Multiple Kelvin Temperatures Available (3000K, 3500K, 4000K and 5000K); ask factory about RGBW option
- Variety of lumen packages and wattages based on use of programmable drivers
- Emergency battery backup available
- Power factor >0.90
- 5 year warranty



ORDER INFORMATION

Factory at your fingertips. Fill in the blanks to create your part number or create a custom configuration.

SERIES	WIDTH	WATTAGE* & LUMENS*		DRIVER		COLOR/CRI**		FINISH			
LVS6 Linear Pendant Louvered Industrial 5"	48L 48"	J48W4000L	48 Watts 4000 Lumens	DMV	0-10V Dimming	30K	3000K 80 CRI	BK	Black		
		Z57W4800L	57 Watts 4800 Lumens							G120	ELV/TRIAC Dimming at 120V only
		Z72W6000L	72 Watts 6000 Lumens	D1MV	0-10V Dimming (dim to 1%)	40K	4000K 80 CRI	SL	Silver		
	96L 96"	J48W4000L	48 Watts 4000 Lumens							50K	5000K 80 CRI
		J96W8000L	96 Watts 8000 Lumens							930K	3000K 90 CRI
		Z114W9600L	114 Watts 9600 Lumens							935K	3500K 90 CRI
		Z144W12000L	144 Watts 12000 Lumens							940K	4000K 90 CRI
				950K	5000K 90 CRI						

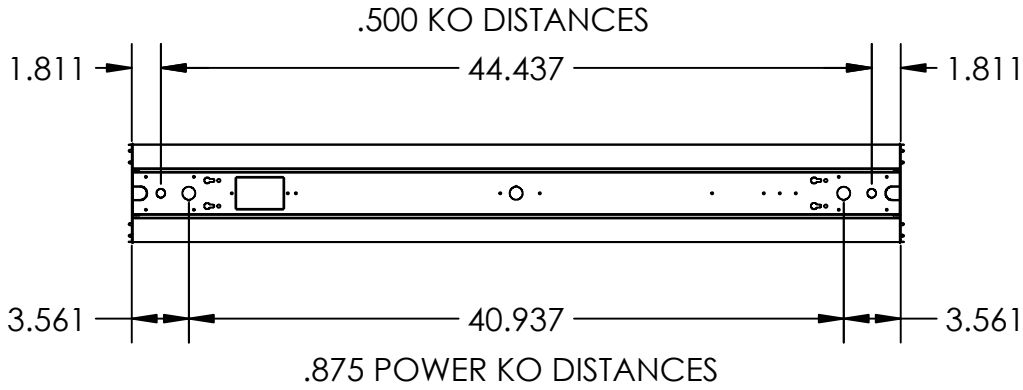
CABLE KIT

HC301WH	Cable kit with 4' cable & 3 wires power feed/cable incl. and white canopy
HC302WH	Cable kit with 12' cable & 3 wires power feed/cable incl. and white canopy
HC3015WWH	Cable kit with 4' cable & 5 wires power feed/cable incl. and white canopy
HC3025WWH	Cable kit with 12 cable & 5 wires power feed/cable incl. and white canopy
HC3016WH	Cable kit with 4' cable & 6 wires power feed/cable incl. and white canopy
HC3026WH	Cable kit with 12' cable & 6 wires power feed/cable incl. and white canopy
2SCS24WH	Two stem kits with 24" stem, canopy and mounting hardware for a 4' fixture
EM	10W 90 mins Emergency battery backup
EM12	12W 90 mins Emergency battery backup
EM20	20W 90 mins Emergency battery backup

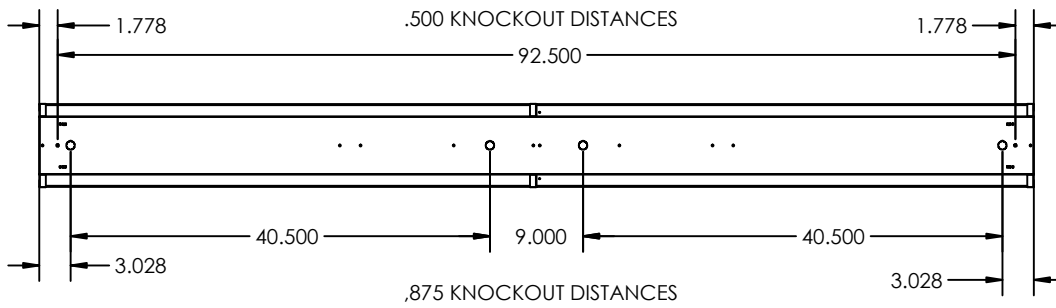
Note:
 *Programmable LED drivers allow custom configured wattages and corresponding lumens.
 ** Consult factory for 90 CRI 5000K availability.
 We reserve the right to change design, materials, LEDs and finish in any way that will not alter installed appearance or reduce function and performance.

DRAWINGS & IMAGES

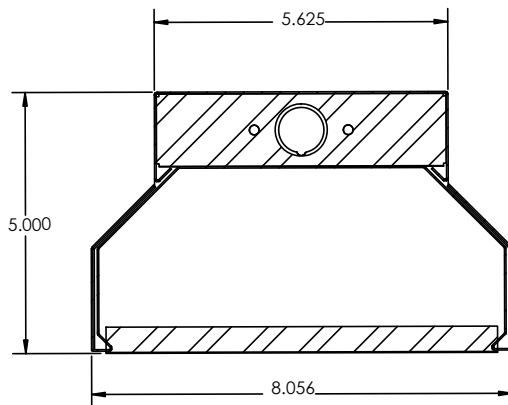
48"



96"

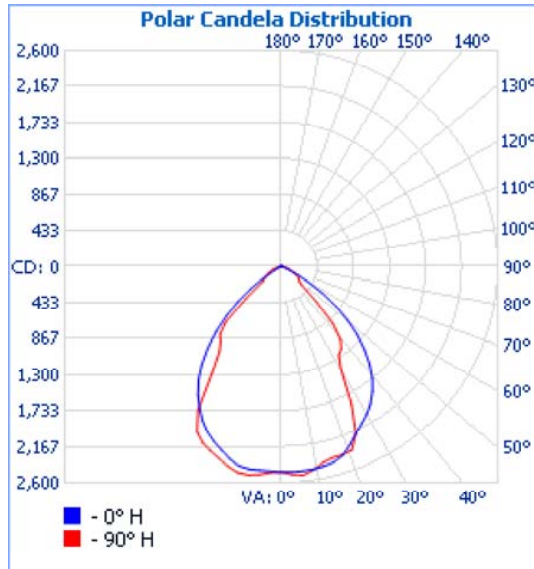
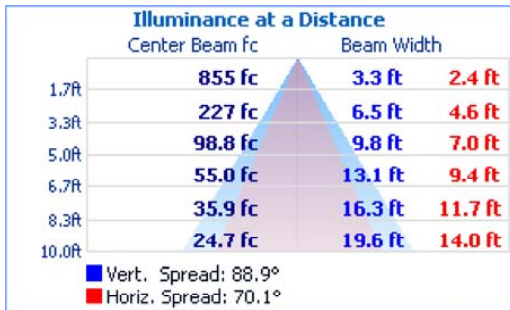


End



PHOTOMETRICS

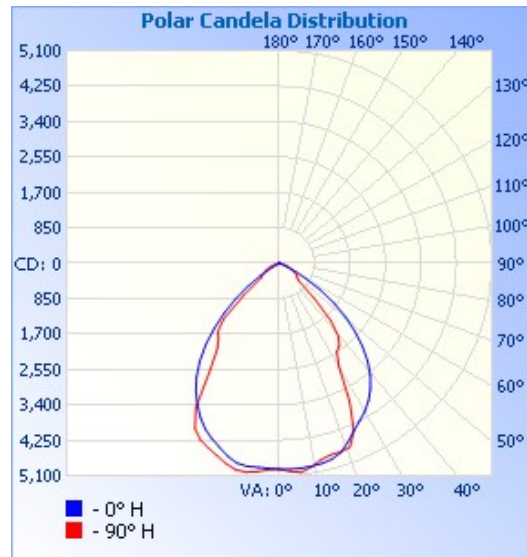
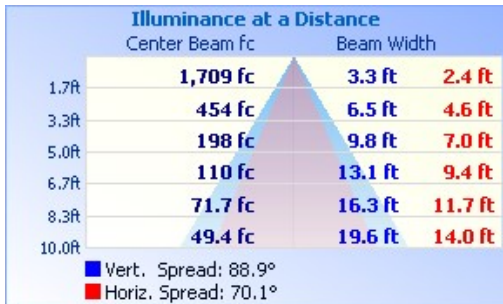
48" - LVS648LJ48W4000LDMV40KWH



Zonal Lumen Summary

Zone	Lumens	% Luminaire
0-30	1,929.3	47.8%
0-40	2,925.9	72.5%
0-60	3,952.2	97.9%
60-90	84.2	2.1%
70-100	12.2	0.3%
90-120	0.0	0%
0-90	4,036.5	100%
90-180	0.0	0%
0-180	4,036.5	100%

96" - LVS696LJ96W8000LDMV40KWHHC3015WWH



Zonal Lumen Summary

Zone	Lumens	% Luminaire
0-30	3,858.6	47.8%
0-40	5,851.9	72.5%
0-60	7,904.5	97.9%
60-90	168.4	2.1%
70-100	24.3	0.3%
90-120	0.0	0%
0-90	8,072.9	100%
90-180	0.0	0%
0-180	8,072.9	100%