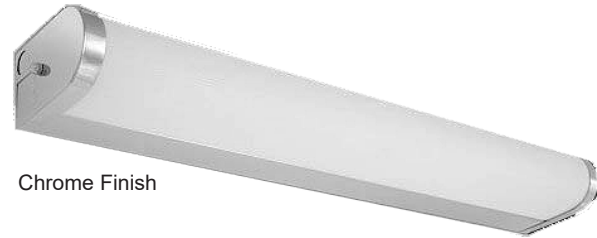


APPLICATIONS

The **Mobern Series 79** is a commercial grade narrow surface mounted bracket luminaire for use in indoor applications such as bathrooms, stairwells, hallways and other areas requiring a multi-purpose fixture.

FEATURES & BENEFITS

- ◆ Post chrome plated steel housing, standard
- ◆ Optional white enamel housing
- ◆ White opal acrylic wraparound diffuser
- ◆ Screw fastened end caps secure diffuser in place
- ◆ Available in one lamp configuration
- ◆ Individual or continuous row application
- ◆ UL listed for damp locations



SPECIFICATIONS

Housing and end caps are die-formed from cold rolled steel. Finish is post chrome plated on housing and end caps. Diffuser is retained by a grooved formation running the length of the fixture and is held in place on both ends by screw fastened end caps for a clean look and for easy access to the fixture during maintenance. End caps may be removed for continuous row mounting with the use of optional contour band. Mounts over electrical junction box. Mounting holes are provided. Soft matte opal white acrylic diffuser provides an even illumination. Listed by and bears UL label.

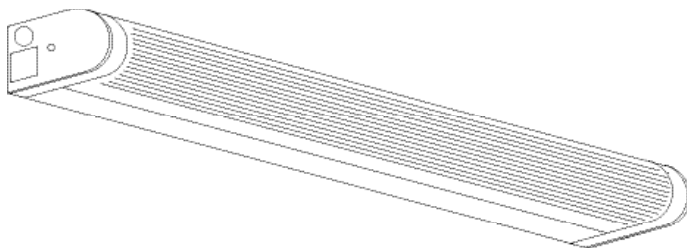
ORDERING DATA

EXAMPLE: 79132WMV

79									
Series	# of Lamps	Lamp Type		Finish		Ballast		Options	
79	1 1 Lamp (per cross section)	15	18" 15WT8	Blank	Chrome (STD)	MV	Multi-Volt, 120-277	B1	T8/T5 1L 500 Lumens Battery Backup (B11)
Multi-Purpose		17	24" 17WT8	W	White	120	Elec. 120V	B2	T8/T5 1L/2L 700 Lumens Battery Backup (B48)
Rounded		25	36" 25WT8			277	Elec. 277V	11	Dual Ballasts 1 Lamp + 1 Lamp
Bracket		32	48" 32WT8			R120	Residential 120V	RIF	Radio Interference Filter
						PMV	Program Multi-Volt		
						SDMV	Step Dimming Multi-Volt		

*Lamps can be sold and shipped on side. Order separately A102 (Contour Band). Call for additional options.

LINE ART



Dimensions and specifications subject to change without notice.



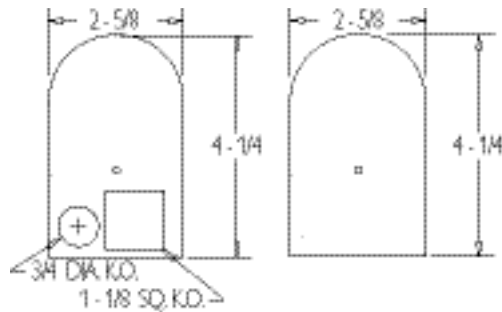
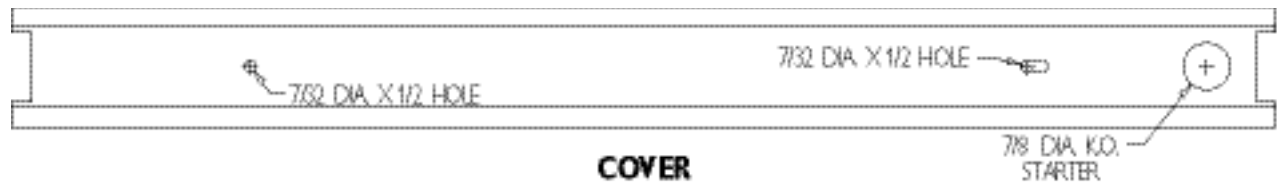
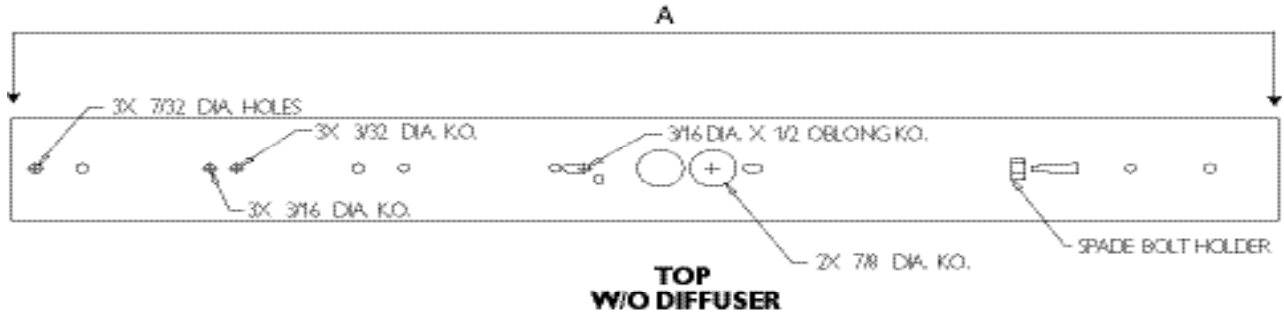
◆ 800-444-WATT ◆ www.mobern.com ◆
8200 Stayton Dr., Ste. 500, Jessup, MD 20794

CAT#

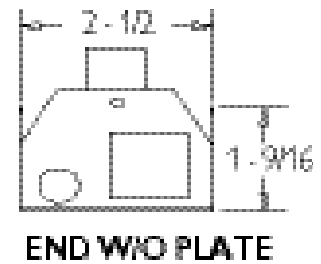
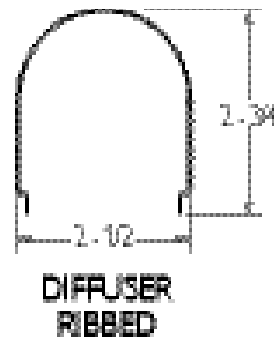
JOB NAME

TYPE

DIMENSIONS



STANDARD PAIR IS ONE PLAIN AND ONE WITH KOS



T8	
Size	Length (A)
(1) 15W	18 1/4"
(1) 17W	24 1/4"
(1) 25W	36 1/4"
(1) 32W	48 1/4"

Dimensions and specifications subject to change without notice.



◆ 800-444-WATT ◆ www.mobern.com ◆
8200 Stayton Dr., Ste. 500, Jessup, MD 20794

CAT#	
JOB NAME	TYPE