

Series FPELP

LED Edgelit Flat Panel

The Series FPELP LED Edgelit Flat Panel provides comfortable, abundant lighting with a very thin and modern design. Available in 2x2 and 2x4 sizes, multiple color temperatures, and with standard 0-10V dimming. Consult factory for availability of 1x4 size.

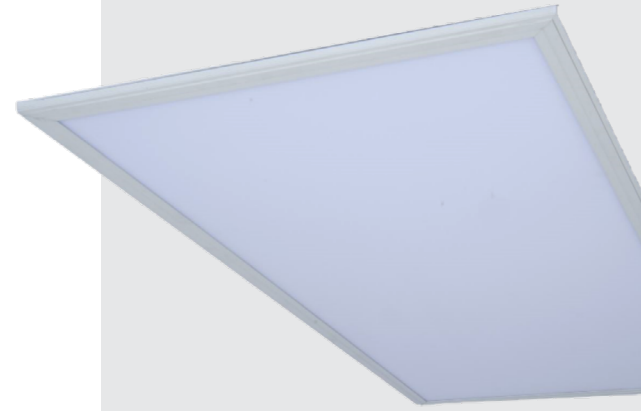
The FPELP is designed for T-Bar recessed mounting with ballast box on the top side of the panel. The panel can be chain or cable mounted with a high tech look with the thin panel profile and the visible driver box on top. It has an unobtrusive white edge. These panels are an ideal choice for many applications, including offices, circulation spaces, retail spaces and residential kitchens remodeled to create a skylight appearance.

CONSTRUCTION

Housing is sealed white aluminum (non-IC type fixture). Lens is evenly diffused frosted material. The driver is a Class 2 compliant design, featuring low voltage, limited power and is capable of 0-10V dimming as standard. Available in 35 input watts. Fixture is 80CRI minimum, multiple color temperatures, sizes and wattages are available. 5 year limited system warranty.

MOUNTING

Designed for T-Bar recessed mounting with ballast box on the top side of the panel. Can also be chain or cable mounted with hardware. Surface mounting available with optional shroud (see Page 2).



DIMENSIONS

2x2 - 23.625"W x 23.625"L x 0.5"H

2x4 - 47.25"W x 23.625"L x 0.5"H

FEATURES & BENEFITS

- Ultra thin LED panel light made from high-grade aluminum
- Environmentally-friendly, mercury-free
- IC Rated for dry and damp locations
- CRI >80 standard
- Multiple Kelvin temperatures available (3500K, 4000K, 5000K)
- L70: >50,000 Hours
- Dimming: 0-10V 120-277V
- Power factor >0.90
- 5 year warranty



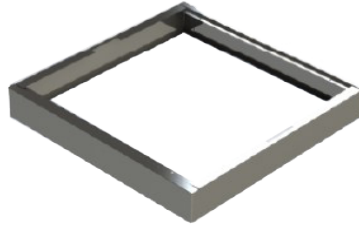
CATALOG#: _____
 PROJECT: _____
 TYPE: _____

ORDER INFORMATION

ITEM NUMBER	DESCRIPTION
FPELP22LED40DMVWH40	2x2 / 40W, 5000L / 0-10V Dim / 4000K
FPELP14LED40DMVWH40	1x4 / 40W, 5000L / 0-10V Dim / 4000K
FPELP24LED50DMVWH40	2x4 / 50W, 6250L / 0-10V Dim / 4000K
FPELP24LED75DMVWH40	2x4 / 75W, 9375L / 0-10V Dim / 4000K

* For 3500K or 5000K, change 40 to 35 or 50

ITEM NUMBER	DIMENSIONS
SHFPELP1x4	48.0"L x 11.92"W x 2.5"H
SHFPELP2x2	24.0"L x 24.0"W x 2.5"H
SHFPELP2x4	48.0"L x 24.0"W x 2.5"H



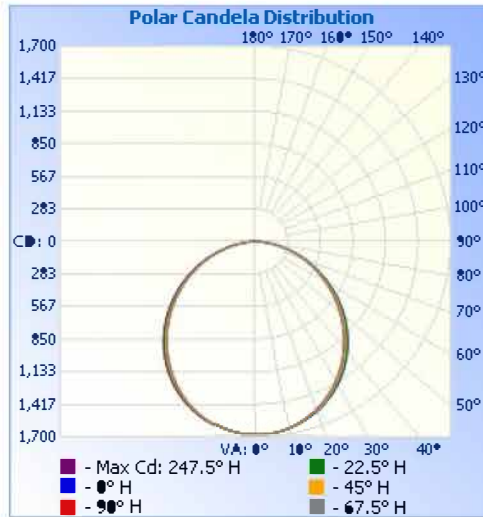
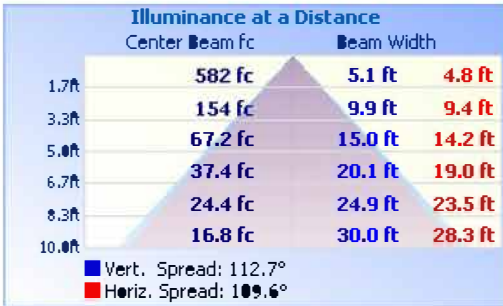
Shroud for Surface Mount

Note:

We reserve the right to change design, materials, LEDs and finish in any way that will not alter installed appearance or reduce function and performance.

PHOTOMETRICS

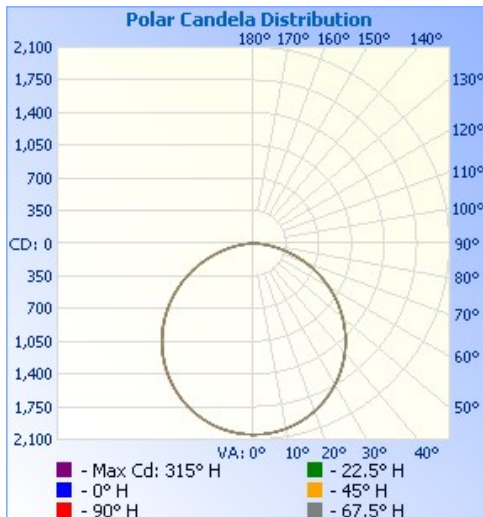
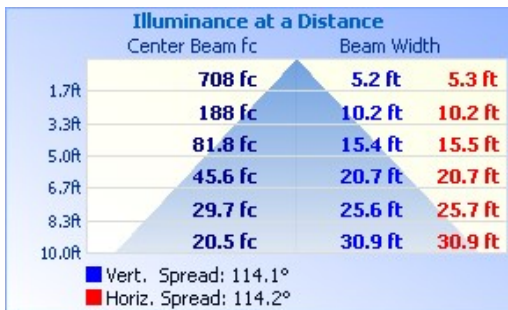
FPELP22LED40DMVWH30



Zonal Lumen Summary

Zone	Lumens	%Luminaire
0-30	1,302.7	27.4%
0-40	2,129.1	44.8%
0-60	3,744.1	78.8%
60-90	1,007.1	21.2%
70-100	427.2	9%
90-120	0.5	0%
0-90	4,751.2	99.9%
90-180	2.5	0.1%
0-180	4,753.7	100%

FPELP24LED50DMVWH30



Zonal Lumen Summary

Zone	Lumens	%Luminaire
0-30	1,595.2	26.7%
0-40	2,620.2	43.9%
0-60	4,663.9	78.2%
60-90	1,299.8	21.8%
70-100	553.0	9.3%
90-120	1.7	0%
0-90	5,963.7	100%
90-180	2.0	0%
0-180	5,965.7	100%