



Texas Fluorescents  
Reinvented

CATALOG#: \_\_\_\_\_  
PROJECT: \_\_\_\_\_  
TYPE: \_\_\_\_\_



# Series 209

## LED Shallow Economy Wraparound

A shallow, economy designed, high efficiency, wraparound luminaire available in either two or four foot lengths. Low initial cost, maintenance free, this series also delivers excellent brightness control.

### CONSTRUCTION

Completely die formed from heavy gauge cold rolled steel. Design embossed ends are secured to the housing. Wireway cover snaps on or off without tools.

### DIFFUSERS

A crystal clear prismatic or frosted diffuser extruded from 100% virgin acrylic that will maintain its color under normal conditions, indefinitely. Linear prisms on the interior side walls direct the light ceilingwards, which can then refract back down, The bottom is composed of an evenly spaced pattern of conical prisms yeilding glare free diffused light. Diffuser is lift and shift for ease of install and cleaning and can remain attached, hanging down from either side of the housing for simple two hand maintenance.

### MOUNTING

Suitable for individual or continuous run installations. May be surface or pendant mounted.

### TYPICAL OPTIONS & ACCESSORIES

Emergency battery backup, whips

### DIMENSIONS

2ft. - 9.375"W x 24"L x 3.1"Dp  
4ft. - 9.375"W x 48"L x 3.1"Dp

### FEATURES & BENEFITS

- Available clear prismatic acrylic lens or frosted lens
- Delivers all around illumination
- Available in 2ft and 4ft
- Ideal for kitchen, laundry rooms, garage or office
- Rated for dry and damp locations
- CRI >80 (90 CRI avail)
- >50,000 hrs of L70 LED life
- 0-10 Volt dimmable 120-277V (120 ELV/Triac avail)
- Power factor >0.90
- 5 year warranty



**ORDER INFORMATION**

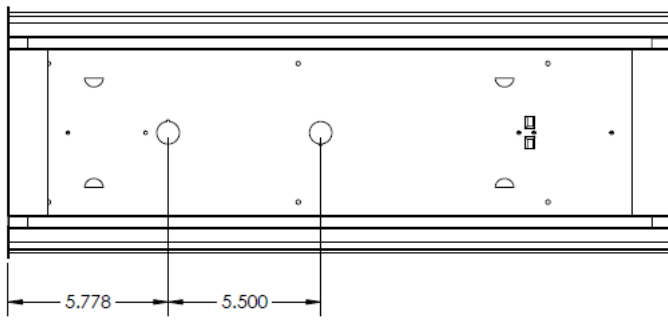
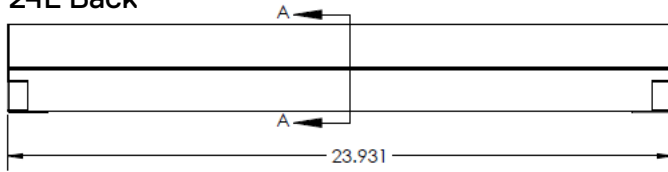
Factory at your fingertips. Fill in the blanks to create your part number or create a custom configuration.

SERIES	LENS MATERIAL	LENGTH	* W * L	WATTAGE & LUMENS	DRIVER	COLOR	
209	A Prismatic Acrylic #12 Pattern	24L 24"		F12W1600L	12 Watts 1665 umens	DMV G120 0-10V Dimming ELV/Triac dimming at 120V only D1MV 0-10V Dimming (dim to 1%)	30K 3000K 35K 3500K 40K 4000K 50K 5000K
				F18W2400L	18 Watts 2420 Lumens		
				F24W3100L	24 Watts 3135 Lumens		
				F28W3400L	28 Watts 3465 Lumens		
				F30W3600L	30 Watts 3630 Lumens		
	FR Frosted Prismatic Acrylic #12 Pattern	48L 48"		F23W2650L	23 Watts 2646 Lumens		
				F32W3450L	32 Watts 3818 Lumens		
				F48W4800L	48 Watts 5107 Lumens		
				F48W5700L	48 Watts 5700 Lumens		
				F57W5400L	57 Watts 6019 Lumens		
				F57W6700L	57 Watts 6700 Lumens		

CRI	OPTIONS
Blank 80 CRI	WP 6ft. 3 wire 18 gauge whip
90 90 CRI	WP4 6ft. 4 wire 18 gauge whip (non dimming EM)
	WP5W 6ft. 5 wire 18 gauge whip
	WP6W 6ft. 6 wire 18 gauge whip (dimming EM)
	EM 10W emergency battery backup (remote only)
	EM12 12W emergency battery backup (remote only)
	EM20 20W emergency battery backup (remote only)

**DRAWINGS & IMAGES**

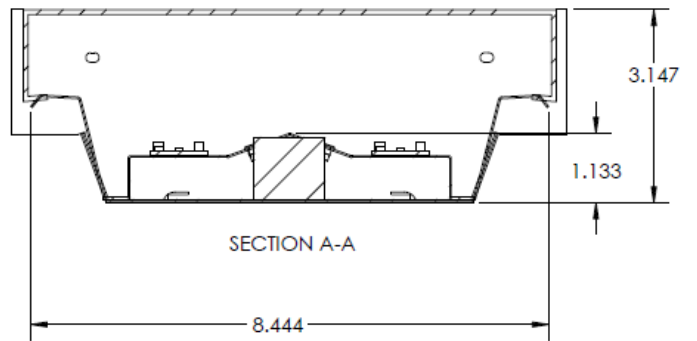
24L Back



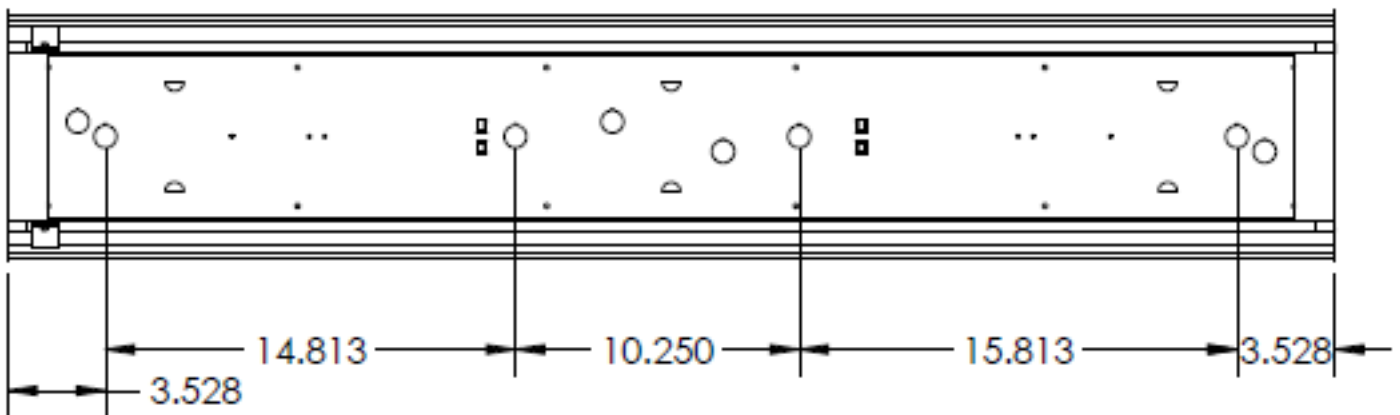
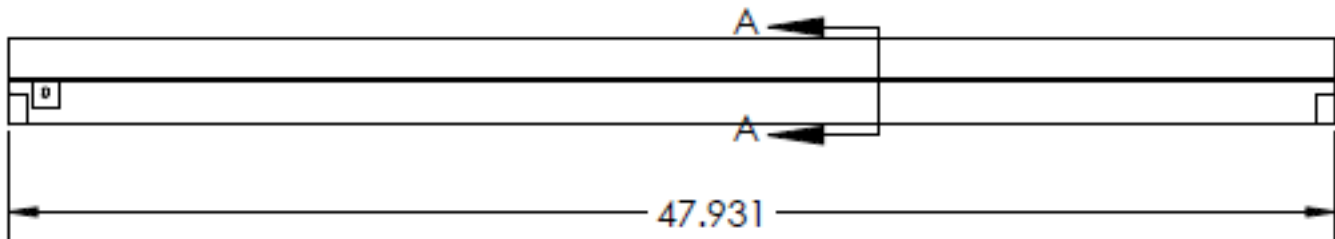
**Replacement Lens Ordering Information**

Series	Description
0209A24L	Replacement acrylic lens for 24L
0209A48L	Replacement acrylic lens for 48L
0209FR24L	Replacement frosted lens for 24L
0209FR48L	Replacement frosted lens for 48L

End

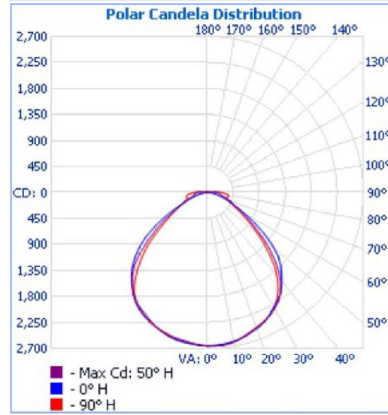
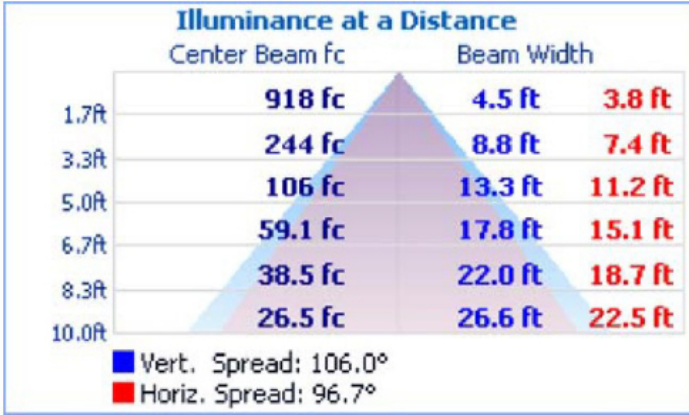


48L Back



### PHOTOMETRIC

#### 209FR48LF57W670LDMV40K



**Zonal Lumen Summary**

Zone	Lumens	% Luminaire
0-30	2,090.0	31.1%
0-40	3,445.0	51.3%
0-60	5,676.5	84.6%
60-90	981.8	14.6%
70-100	528.0	7.9%
90-120	54.6	0.8%
0-90	6,658.3	99.2%
90-180	54.6	0.8%
0-180	6,712.9	100%



Texas Fluorescents  
Reinvented

CATALOG#: \_\_\_\_\_

PROJECT: \_\_\_\_\_

TYPE: \_\_\_\_\_

# Series 209

LED Shallow Economy  
Wraparound

## DLC LISTED

Item Number	Item Number
209A24LF12W1600LDMV30K	209A48LF23W2650LDMV35K
209A24LF12W1600LDMV35K	209A48LF23W2650LDMV40K
209A24LF12W1600LDMV40K	209A48LF23W2650LDMV50K
209A24LF12W1600LDMV50K	209A48LF32W3450LDMV30K
209A24LF18W2400LDMV30K	209A48LF32W3450LDMV35K
209A24LF18W2400LDMV35K	209A48LF32W3450LDMV40K
209A24LF18W2400LDMV40K	209A48LF32W3450LDMV50K
209A24LF18W2400LDMV50K	209A48LF48W4800LDMV30K
209A24LF24W3100LDMV30K	209A48LF48W4800LDMV35K
209A24LF24W3100LDMV35K	209A48LF48W4800LDMV40K
209A24LF24W3100LDMV40K	209A48LF48W4800LDMV50K
209A24LF24W3100LDMV50K	209A48LF57W5400LDMV30K
209A24LF28W3400LDMV30K	209A48LF57W5400LDMV35K
209A24LF28W3400LDMV35K	209A48LF57W5400LDMV40K
209A24LF28W3400LDMV40K	209A48LF57W5400LDMV50K
209A24LF28W3400LDMV50K	209A48LV37W4500LDMV30K
209A24LF30W3600LDMV30K	209A48LV37W4500LDMV35K
209A24LF30W3600LDMV35K	209A48LV37W4500LDMV40K
209A24LF30W3600LDMV40K	209A48LV37W4500LDMV50K
209A24LF30W3600LDMV50K	
209A24LV22W2650LDMV30K	
209A24LV22W2650LDMV35K	
209A24LV22W2650LDMV40K	
209A24LV22W2650LDMV50K	

