



JOB NAME:

CAT#:

TYPE:

APPLICATIONS

Typical applications for this SmartSense Series include open office cubicles, offices, conference rooms, restrooms and hallways. This technology also provides superior detection in hard surfaced areas, such as stairwells and hallways. Bi-level lighting control is available (consult factory for options) resulting in up to 50% energy savings for fixtures that are on 24-hours a day, seven days a week, while still providing enough light for safety and egress.

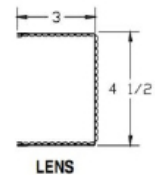
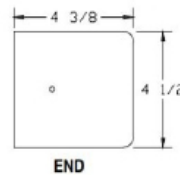
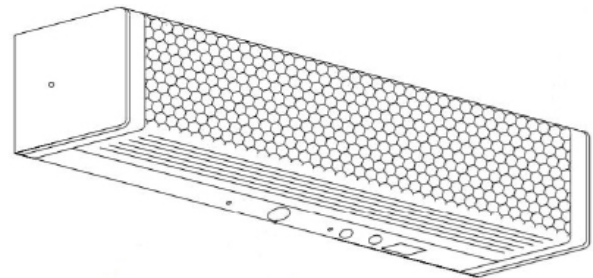
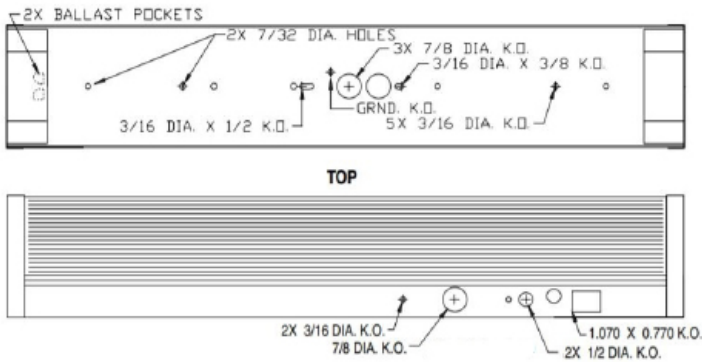


Versatile linear LED fixture available with integral ultrasonic occupancy sensor to sense motion within a space and automatically turns lights on even when the sensor has no direct line of sight to occupants. When the area is vacated and the time delay has elapsed, the sensors automatically dim the lights. Ultrasonic detection operates by transmitting sound waves throughout an area and measuring the speed at which they return. Movement increases the return frequency, which triggers occupancy. Ultrasonic Smart Sensors provide functions for testing, time delay overriding the fixture 'ON'.

FEATURES & BENEFITS

- Includes Ultrasonic Smart Sensor
- Clear acrylic prismatic lens with linear ribbed sides standard
- Screw fastened end caps secure diffuser in place
- Individual or continuous row application
- cETL_{us} listed for damp location
- Min CRI 82

DIMENSIONS



Lumens are subject to a tolerance of ±10% and not relevant to RGB
Input wattage can vary depending on options
Dimensions and specifications subject to change without notice.





JOB NAME:

CAT#:

TYPE:

ORDERING

EXAMPLE: 155SW 24 LED 24 DMV 40

155SW		LED		DMV			
1. SERIES	2. SIZE	3. GEAR	4. WATTAGE/LUMENS	5. DRIVER	6. COLOR TEMP	7. EMERGENCY (O) ¹	
155SW	24 24" 48 48"	LED	<u>2 Ft.</u> 15 15 Watts 2050 Lumens 24 24 Watts 2990 Lumens 28 28 Watts 3400 Lumens <u>4 Ft.</u> 30 30 Watts 4065 Lumens 48 48 Watts 5985 Lumens 57 57 Watts 6855 Lumens	DMV 120-277V Multivolt 0-10V Dimmable	30 3000K 35 3500K 40 4000K 50 5000K	EM 10 Watts, 1600 Lumens Battery Backup	

8. LENS (O) ¹	9. UNOCCUPIED SETTINGS (O) ¹
OA Opal acrylic lens	-OFF 0% -10 10% -20 20% -30 30% -40 40% -50 50% -60 60% -70 70% -80 80% -90 90%

DLC INFORMATION



DLC Premium Listed (4 ft DMV only)	
155SW-48LED30DMVxx	XX=30, 35,40, 50
155SW-48LED48DMVxx	XX=30, 35,40, 50
155SW-48LED57DMVxx	XX=30, 35,40, 50

Notes:

¹(O) is optional

Lumens are subject to a tolerance of ±10% and not relevant to RGB

Input wattage can vary depending on options

Dimensions and specifications subject to change without notice.





JOB NAME:

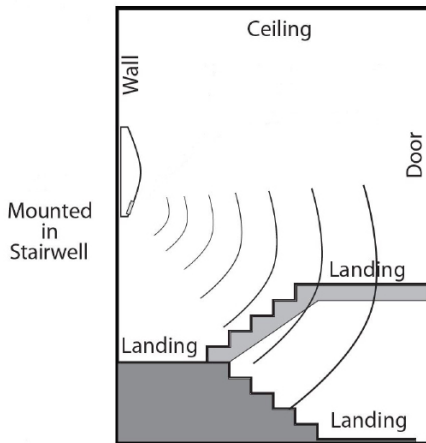
CAT#:

TYPE:

TECHNICAL INFORMATION

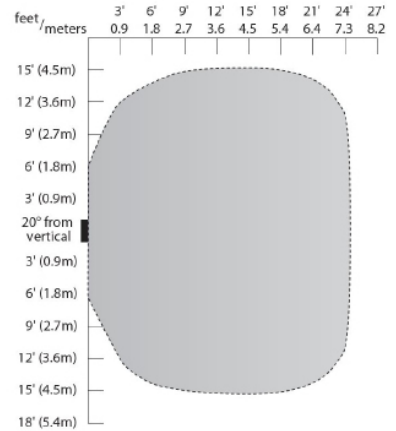


Ultrasonic technology for open area detection with line-of-sight obstructions



Wiring & Coverage

Coverage Patterns
@ 8 ft Mounting Height



Features

Time Delay: 5 to 30 minutes
Coverage at 8' height, 24' diameter

Lumens are subject to a tolerance of ±10% and not relevant to RGB
Input wattage can vary depending on options
Dimensions and specifications subject to change without notice.

