

JOB NAME:
CAT#:
TYPE:

APPLICATIONS

This LPLI LED Series is a subtle low-profile ellipsoidal pendant luminaire. Available in 96" and 48" modular lengths or individual or row configurations. For cable mounting only. End caps can be added to beginning of row, end of row or both ends of individual units. For continuous row mounting, wiring (supplied with fixture) feeds through enclosed wireway. Sleek, compact, and low profile bullnose silhouette makes a dynamic design statement used individually or in graceful linear runs. When suspended, the Low Profile appears to float in the environment. Ideal for settings requiring generous overall illumination as well controlled task lighting with direct/indirect distributions available.

MOUNTING

Standard 4' adjustable power cable (2 for 4' unit or 8' unit, included).

CONSTRUCTION

Rugged steel housing with anti-rust protection powder coated white. Custom paint finishes available.

BAFFLE

Low iridescence semi-specular aluminum parabolic louver provides a wide bat wing distribution and allows wide spacing of fixtures that reduce brightness contrasts on the ceiling, assuring a comfortable environment.

TYPICAL OPTIONS AND ACCESSORIES

Emergency driver, Cord sets, whips, occupancy sensors Hanging kits, Wire guards. Contact factory for additional options.

LISTING

Fixtures conform to Underwriters' Laboratories standards for production and are carefully tested prior to packing. cETLus Listed.

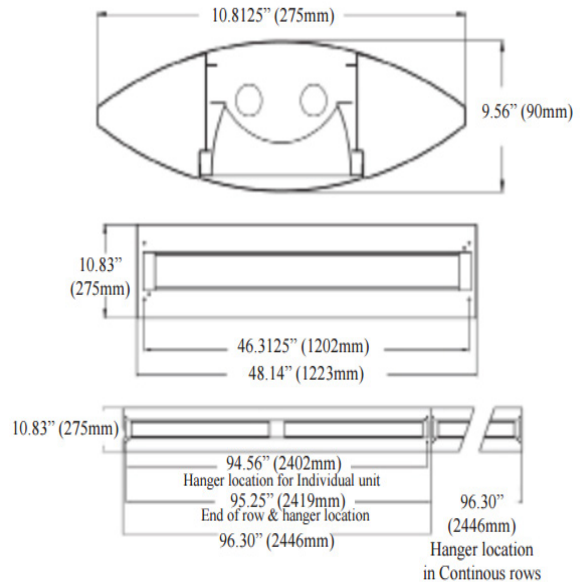


DIMENSIONS

SIZE W x L x H in inches (mm)

4ft. - 10.8" x 48" x 3.5"

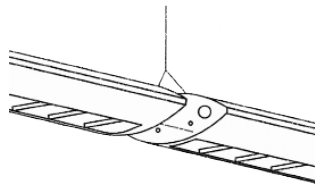
8ft. - 10.8" x 96" x 3.5"



ADDITIONAL INFO



- Cable kit included
- White canopy is standard.
- ChangeWH to BK for black canopy and cord.



- Joins easily for long runs.



Dimensions and specifications subject to change without notice.



JOB NAME:

CAT#:

TYPE:

ORDERING

EXAMPLE: LPLI 48 LED 48 DMV WH MW 30 EM C12

LPLI		LED								
1. SERIES	2. SIZE	3. GEAR	4. WATTAGE/LUMENS		5. DRIVER		6. FINISH		7. COLOR TEMP	
LPLI	48 48"	LED	<u>4 ft.</u>		DMV	120-277V	WH	White (std.)	30	3000K
LED Linear	96 96"		48	48W 5650 Lumens		Multivolt	SL	Metallic Silver	35	3500K
Pendant			57	57W 6400 Lumens		0-10V	RD	Red	40	4000K
				<u>8 ft.</u>	SDMV	Dimmable	IN	Iron	50	5000K
			97	97W 8200 Lumens		Step Dimming	BK	Black		
			114	114W 9350 Lumens		120-277VAC				
						100%-40%				

8. EMERGENCY(O)'		9. CABLE MOUNTING(O)'		10. CONFIGURATION	
EM	10W, ~1300 lumen battery backup	C12	12 ft. adjustable cable mounting	Blank	Individual
EM7	7W, ~900 lumen battery backup			-B	Beginner Run
EM5	5W, ~600 lumen battery backup			-E	Ender Run
				-J	Joiner

Plug in System Options: it's for continuous run applications by simply plugging in sections together

Part Number	Description
PI1	3 wire harness, including white, black and green
PI2	4 wire harness, including white, black, green and blue for emergency battery backup
PI3D	5 wire harness, including white, black, green, violet and gray

NOTES:

'O is optional



Dimensions and specifications subject to change without notice.